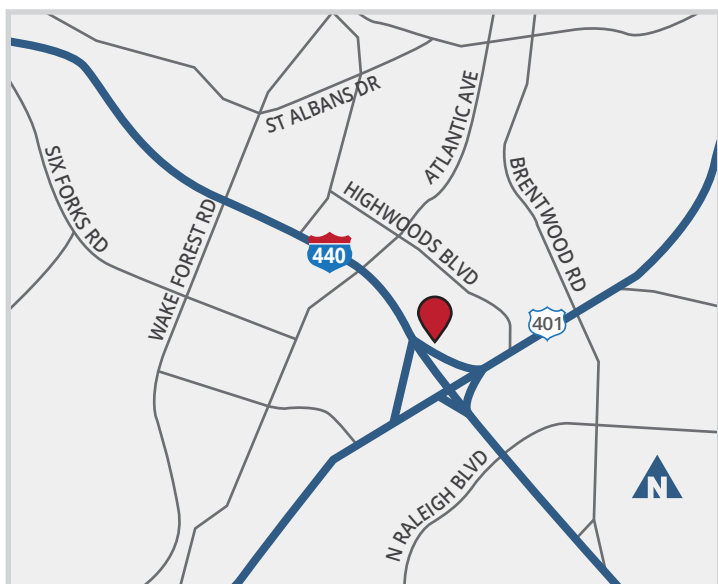




THIRD FLOOR | 3109 POPLARWOOD COURT, RALEIGH NC 27604



PROPERTY FEATURES

Third Floor Availabilities: 3,588 to 8,673 RSF.

Great location in Midtown East featuring Wegmans, Costco, nearby Childcare, and easy access to both downtown Raleigh and North Hills.

- Local Ownership
- Outdoor Seating
- Free Parking
- Key Card Access
- Food Trucks Available
- Full Time Maintenance Staff
- On-Site Coffee Shop

Available:

SUITE 300: 1,997 RSF
SUITE 301: 5,085 RSF

Lease Rate:

\$24.00 sq ft



RACHAEL GASTON

Broker / Leasing Agent

Rachael.Gaston@debnamproperties.com

DEBNAM PROPERTY MANAGEMENT

2900 Highwoods Blvd. Ste 200

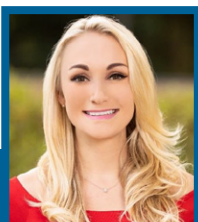
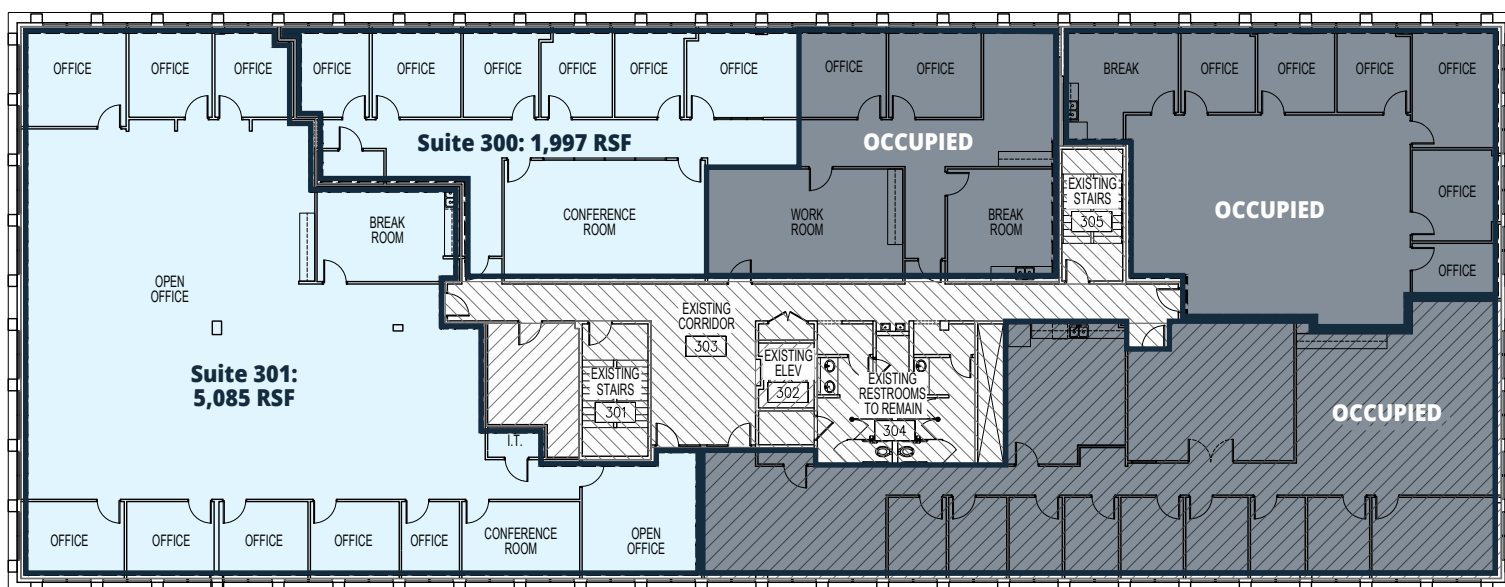
Raleigh, NC 27604

619-855-2960 DEBNAMPROPERTIES.COM

THIRD FLOOR AVAILABILITIES

SUITE 300: 1,997 RSF

SUITE 301: 5,085 RSF



RACHAEL GASTON

Broker / Leasing Agent

Rachael.Gaston@debnamproperties.com

DEBNAM PROPERTY MANAGEMENT

2900 Highwoods Blvd. Ste 200

Raleigh, NC 27604

619-855-2960 DEBNAMPROPERTIES.COM