

**FOR LEASE**

Owned by  **LINK**

# 925 National Drive

Sacramento, CA

## 16,640 sqft



**LEASING INFO  
& CONTACT**

**Matt Lofrano**  
**Mark Demetre, SIOR**  
**Hannah Crandall**

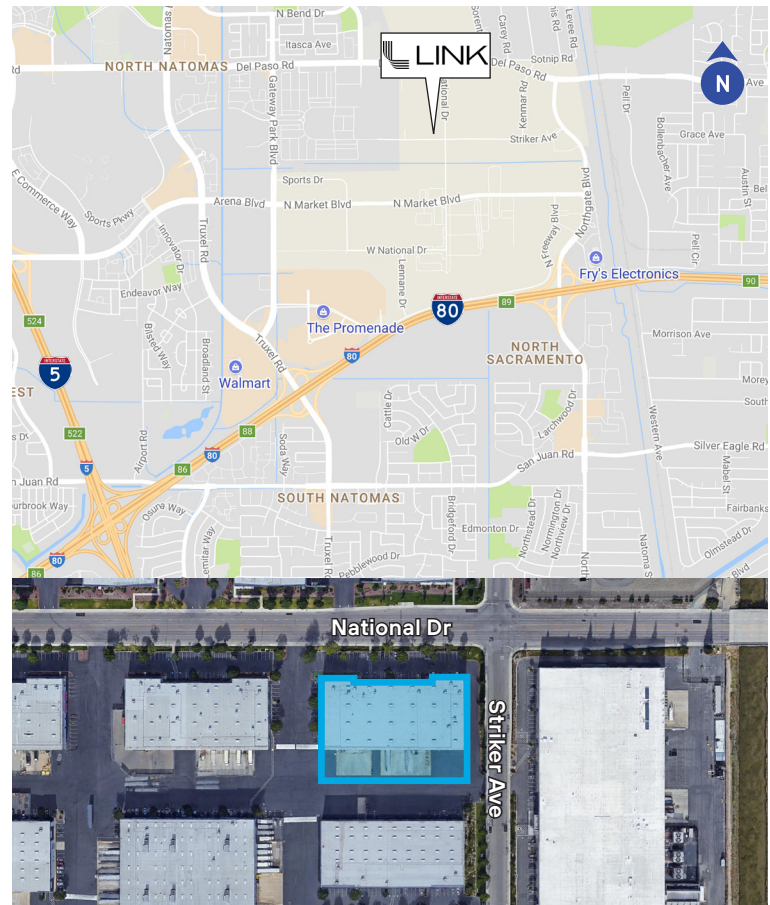
(916) 563-3056 / [matt.lofrano@colliers.com](mailto:matt.lofrano@colliers.com) / CA Lic. 01251712  
(916) 563-3010 / [mark.demetre@colliers.com](mailto:mark.demetre@colliers.com) / CA Lic. 00852871  
(916) 563-3093 / [hannah.crandall@colliers.com](mailto:hannah.crandall@colliers.com) / CA Lic. 02043170

**Colliers**

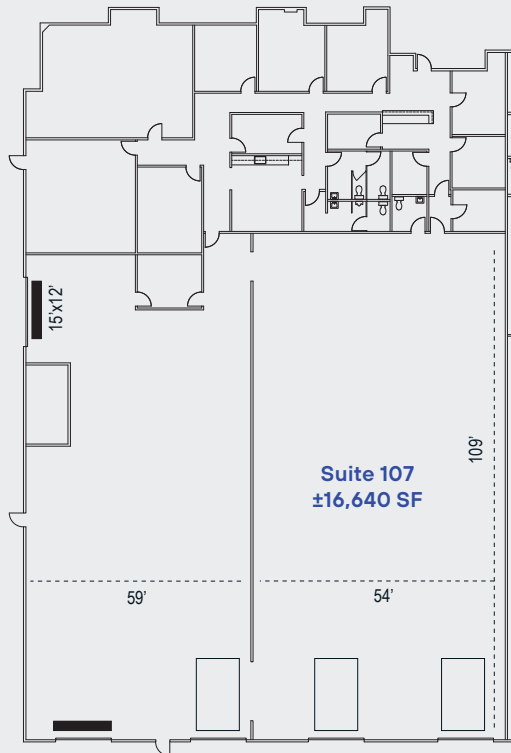
## SPECIFICATIONS

Available Space	±16,640 SF
Office Area	±4,893 SF
Loading	2 grade level doors 3 dock high doors
Clear Height	±24'-28'
Skylights	Yes
Power	277/480v
Access	Easy access to Interstates 5 and 80
Highlights	Extensive glass-line Frontage on National Drive

This document has been prepared by Colliers International for advertising and general information only. Colliers International makes no guarantees, representations or warranties of any kind, expressed or implied, regarding the information including, but not limited to, warranties of content, accuracy and reliability. Any interested party should undertake their own inquiries as to the accuracy of the information. Colliers International excludes unequivocally all inferred or implied terms, conditions and warranties arising out of this document and excludes all liability for loss and damages arising there from. This publication is the copyrighted property of Colliers International and/or its licensor(s). Real estate officer license corporation identification number 01908588. ©2021. All rights reserved.






## FLOOR PLAN



## SITE PLAN



-  Dock high door
-  Grade level door
-  Knockout panel

LEASING INFO  
& CONTACT

Matt Lofrano

Mark Demetre, SIOR

Hannah Crandall

(916) 563-3056 / matt.lofrano@colliers.com / CA Lic. 01251712

(916) 563-3010 / mark.demetre@colliers.com / CA Lic. 00852871

(916) 563-3093 / hannah.crandall@colliers.com / CA Lic. 02043170

