

National Place

WiredScore Fact sheet



Certification

WiredScore

Expiration date

July 16, 2025

Building size

450000 sqft

Building address

**National Place, 1331 Pennsylvania
Avenue Northwest, Washington, District
of Columbia, 20004, United States**

National Place is a WiredScore Platinum building





Being a WiredScore Platinum building means that National Place can support occupiers with the most stringent technology requirements. The building has been designed as best-in-class across all features of connectivity that matter most to occupiers: number and quality of internet service providers; diversity and resiliency of telecommunications and power infrastructure; wireless network infrastructure; ease of installation and capacity to readily support new telecommunications services.



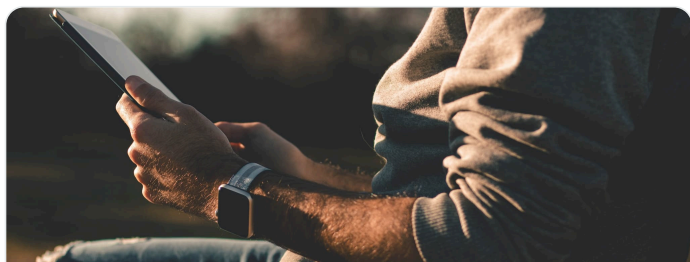
WiredScore
PLATINUM

1 of 9 WiredScore Platinum buildings in Washington

An overview of the experience at National Place

Category	Your experience at National Place	Regular building experience
 Mobile and Internet	Enjoy unparalleled digital connectivity with top-tier internet providers and superior mobile performance, powered by robust fiber infrastructure for the ultimate online experience throughout the building.	Expect frustrating interruptions and dead zones as you move throughout the building due to patchy digital connectivity.
 Set-up	Enjoy seamless and effortless internet setup with multiple high-speed providers at your fingertips with streamlined legal contracting. Ensuring you easily find the perfect match for your needs and enjoy a smooth, hassle-free digital experience.	Experience a tedious and slow process to setup your internet connection.
 Future-ready	To meet your needs well into the future, the building is equipped with ample spare capacity throughout, including the risers, points of entry and telecommunications rooms. This ensures the building can accommodate new and emerging technologies, providing you with the flexibility and adaptability you require.	Risk future problems arising from an internet connection and mobile connectivity that can't keep up with your growing needs.
 Resiliency	The building's robust infrastructure, including multiple entry points and diverse and secure risers and telecommunications rooms, mitigates against almost all risks to uninterrupted connectivity.	Experience frequent productivity loss and general frustration resulting from your vulnerable, and poorly secured internet infrastructure.

Connected building highlights at National Place



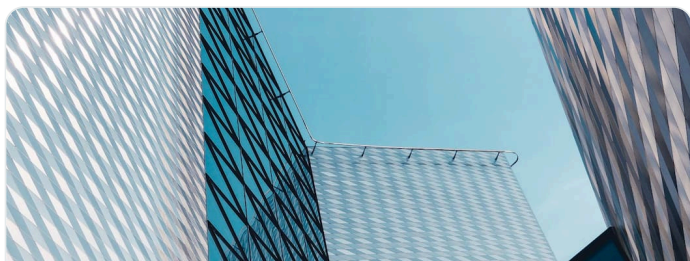
Mobile and Internet

- Multiple high-speed providers
- Free Wi-Fi in amenity areas allows you to be connected throughout the building.
- Exercise the power of choice with multiple high-speed providers to choose from.
- Easily install fixed wireless, satellite and mobile equipment with dedicated space and cable pathways to risers on the rooftop.



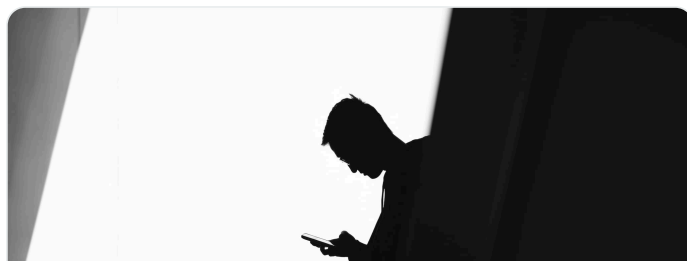
Set-up

- Easier service installation enabled by spare capacity within the below-ground telecommunications cable pathway.
- Capacity in risers enables fast installations of new connectivity services.
- Fully-distributed fiber
- Secure access to risers on each floor prevents unauthorized access and accelerates the installation of connectivity services.
- Each floor has defined horizontal pathways to minimize disruption when you enable new services.



Future-ready

- A dedicated fiber backbone eases telecommunications installations.
- Signed ISP agreements are available to streamline new connections.
- New internet service providers can be installed quickly with available space in the telecommunications room.
- Standardized ISP agreements are available to streamline new connections.
- Connect seamlessly to service providers via below-ground telecommunications cable pathways into the building.



Resiliency

- Your connection is safeguarded by a secure and dedicated telecommunications room.
- Physically diverse routes for your internet connection on different sides of the building means your connectivity is robust.
- Enjoy reliable connectivity thanks to diverse riser routing throughout the building.
- A climate controlled telecommunication room protects your equipment from overheating and condensation.
- A backup power source protects your telecommunications equipment from outages.

What are the Internet service providers (ISP) within the building?

Name of provider	Provider type	Intake	Location	Riser	Full distribution
AT&T	Fiber - Primary	14th St NW	HL Level - Telephone Room	East Riser, West Riser	No
Verizon	Fiber - Primary	14th St NW	HL Level - Telephone Room	East Riser, West Riser	Yes
Verizon	Copper/Coaxial	14th St NW	HL Level - Telephone Room	West Riser, East Riser	Yes
Allied Telecom	Fiber - Primary	14th St NW	HL Level - Telephone Room	West Riser, East Riser	No
Presscom	Fiber - Primary	14th St NW	HL Level - Storage Room	West Riser, East Riser	No
Comcast Business	Copper/Coaxial	14th St NW	West Riser	West Riser	No

What is WiredScore?

WiredScore certification is the global standard for digital connectivity, recognizing and promoting best-in-class digitally connected buildings across the globe. Being certified by WiredScore demonstrates the building has gone through rigorous 3rd party verification.

4000+

certified buildings

8m+

people in WiredScore
certified buildings

800m+

certified square feet

160+

cities across the globe