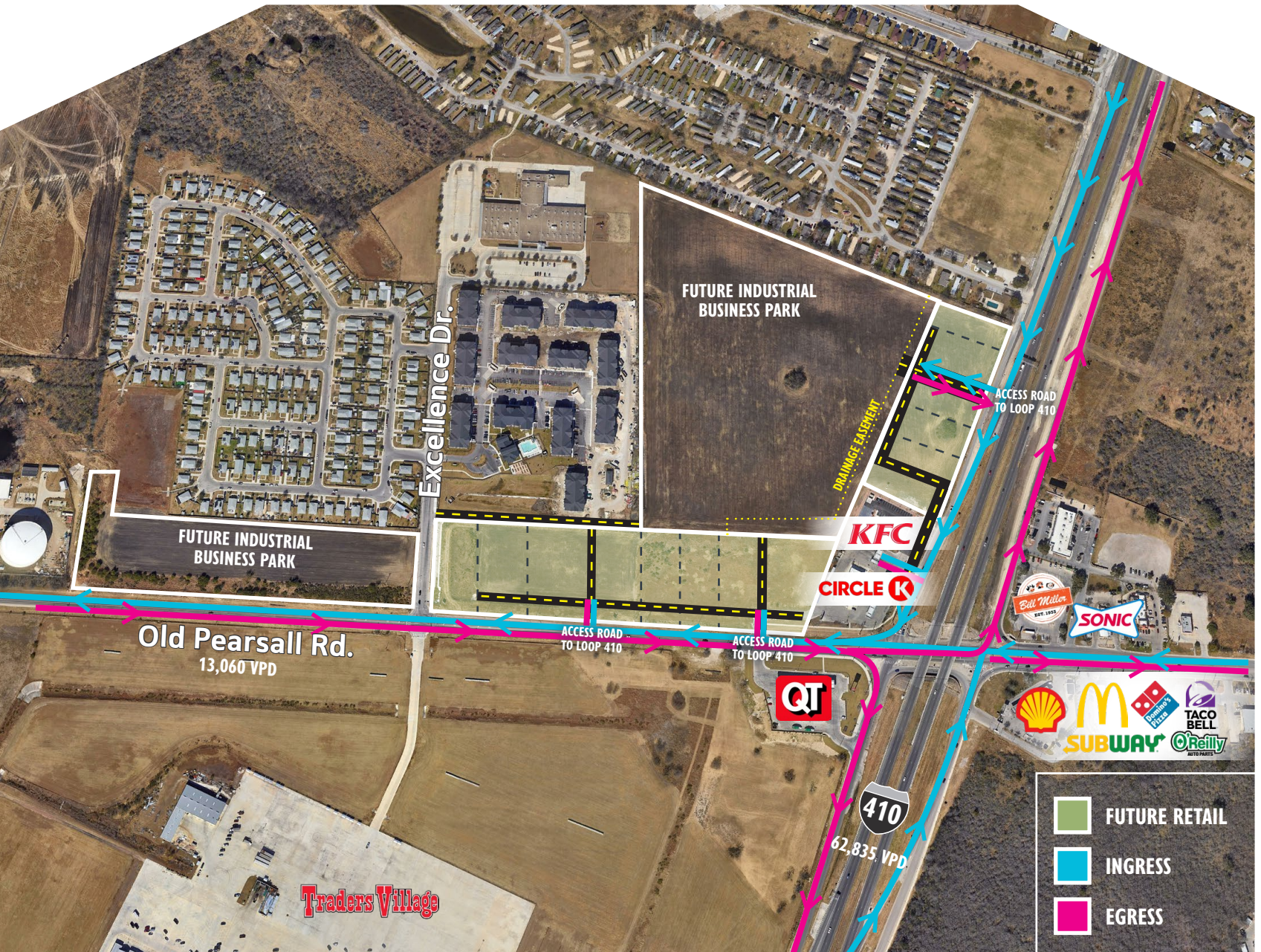


OLD PEARSALL RD. AND SW LOOP 410

# RETAIL PADS





OLD PEARSALL RD. AND SW LOOP 410

# RETAIL PADS



FULLY  
PLATTED



ZONED: C3 & C2



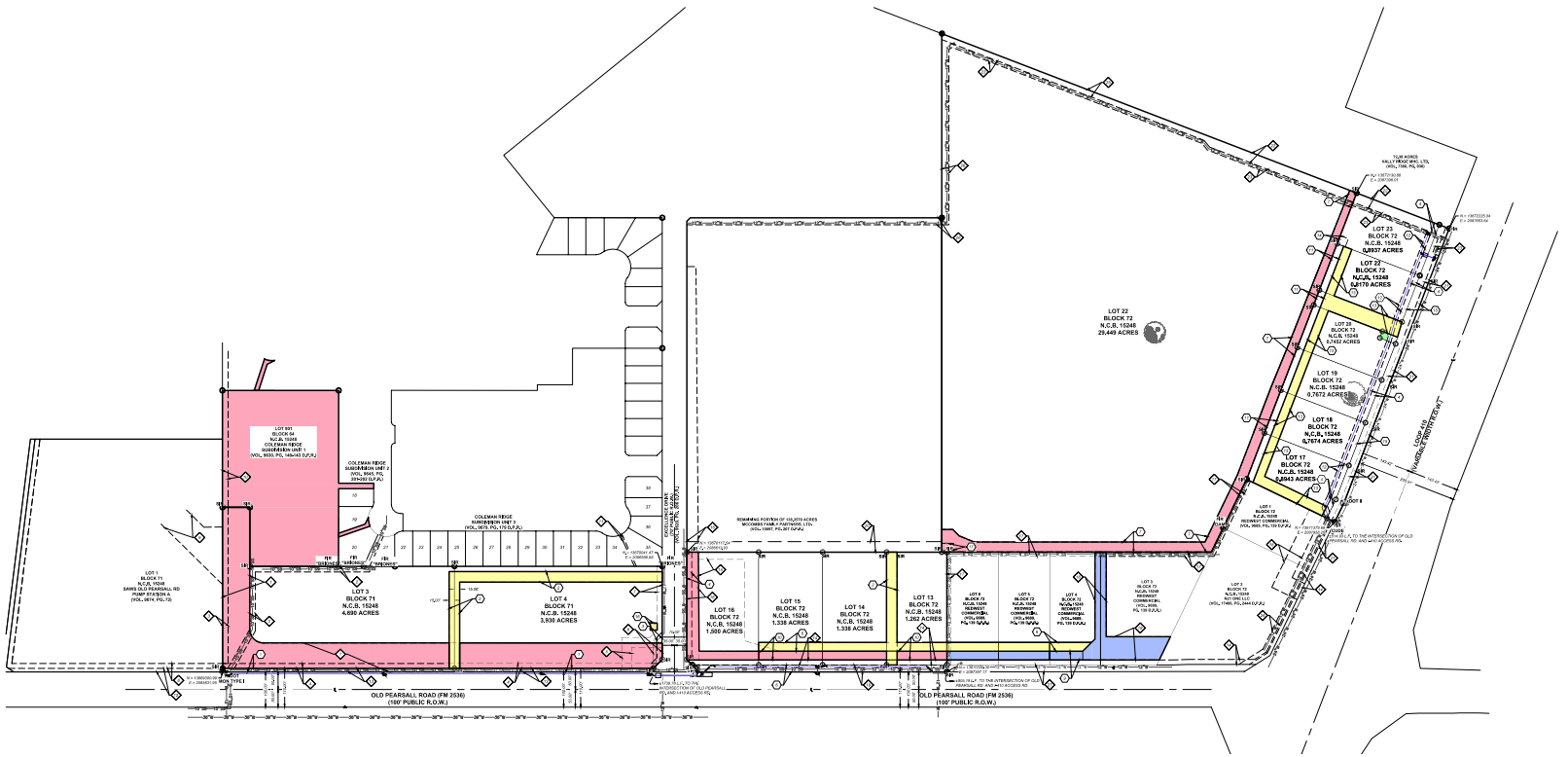
ACCESS TO LOOP  
410 ACCESS  
RD. AND OLD  
PEARSALL RD.



UTILITIES  
ON SITE

OLD PEARSALL RD. AND SW LOOP 410

# RETAIL PADS



**KEY NOTES**

- |   |   |  |  |   |
|---|---|--|--|---|
| 1 VARIABLE WIDTH DRAINAGE EASEMENT (VOL. 9620 PG. 206 D.P.R.)                       | 11 5' ELECTRIC, GAS, TELEPHONE & CABLE TV EASEMENT (VOL. 9679 PG. 179 D.P.R.)                                 | 21 10' SANITARY SEWER EASEMENT (VOL. 5247 PG. 264 O.P.R.)                      | 4 14' ELECTRIC, GAS, TELEPHONE & CABLE EASEMENT      | 15 VARIABLE WIDTH R.O.W. DEDICATION TO TXDOT 0.5511 ACRES |
| 2 16' SANITARY SEWER EASEMENT (VOL. 9630 PGS. 140-143 D.P.R.)                       | 12 10' SANITARY SEWER EASEMENT & FUTURE RIGHT-OF-WAY RESERVATION (VOL. 9674 PG. 72 D.P.R.)                    | 22 26' ELECTRIC, GAS, TELEPHONE & CABLE TV EASEMENT (VOL. 9620 PG. 206 D.P.R.) | 5 25' INGRESS/EGRESS EASEMENT                        | 16 20' X 20' SIGN EASEMENT                                |
| 3 16' ELECTRIC, GAS, TELEPHONE & CABLE TV EASEMENT (VOL. 9630 PGS. 140-143 D.P.R.)  | 13 10' SANITARY SEWER EASEMENT & FUTURE RIGHT-OF-WAY RESERVATION (VOL. 9620 PG. 206 D.P.R.)                   | 23 10' WATER EASEMENT (VOL. 9620 PG. 206 D.P.R.)                               | 6 20' R.O.W. DEDICATION TO TXDOT 0.3292 ACRES        | 17 PUBLIC SANITARY SEWER EASEMENT                         |
| 4 14' ELECTRIC, GAS, TELEPHONE & CABLE TV EASEMENT (VOL. 9620 PG. 206 D.P.R.)       | 14 14' ELECTRIC, GAS, TELEPHONE & CABLE TV EASEMENT (VOL. 9689 PG. 139 D.P.R.)                                | 24 12' WATER EASEMENT (VOL. 9689 PG. 139 D.P.R.)                               | 7 VARIABLE WIDTH PRIVATE DRAINAGE EASEMENT           |   |
| 5 26' ELECTRIC, GAS, TELEPHONE & CABLE TV EASEMENT (VOL. 15478 PG. 2130 O.P.R.)     | 15 PRIVATE OFF-LOT VARIABLE WIDTH DRAINAGE EASEMENT PERMEABLE (VOL. 9689 PG. 139 D.P.R.)                      | 25 16' ELECTRIC, GAS, TELEPHONE & CABLE TV EASEMENT (VOL. 9620 PG. 206 D.P.R.) | 8 OFF-LOT 25' INGRESS / EGRESS EASEMENT 0.2290 ACRES |   |
| 6 VARIABLE WIDTH WATER EASEMENT (VOL. 9630 PGS. 140-143 D.P.R.)                     | 16 VARIABLE WIDTH DRAINAGE EASEMENT (VOL. 9620 PG. 206 D.P.R.)  | 26 20' WATER EASEMENT (VOL. 9620 PG. 206 D.P.R.)                               | 9 OFF-LOT 25' DRAINAGE EASEMENT 0.2218 ACRES         |   |
| 7 14' ELECTRIC, GAS, TELEPHONE & CABLE TV EASEMENT (VOL. 15478 PG. 2130 O.P.R.)     | 17 12' SANITARY SEWER EASEMENT (VOL. 9689 PG. 139 D.P.R.)   | 27 RIGHT-OF-WAY DEDICATION TO TXDOT 0.396 ACRES (VOL. 9689 PG. 139 D.P.R.)     | 10 25' DRAINAGE EASEMENT                             |   |
| 8 14' ELECTRIC, GAS, TELEPHONE & CABLE TV EASEMENT (VOL. 9674 PG. 72 D.P.R.)        | 18 VARIABLE WIDTH ACCESS AND DRAINAGE EASEMENT (VOL. 9689 PG. 139 D.P.R.)                                     | 1 10' R.O.W. DEDICATION TO TXDOT 0.2612 ACRES                                  | 11 20' SANITARY SEWER EASEMENT                       |   |
| 9 VARIABLE WIDTH DRAINAGE EASEMENT (VOL. 9674 PG. 72 D.P.R.)                        | 19 OFF-LOT 20' SANITARY SEWER EASEMENT & FUTURE RIGHT-OF-WAY RESERVATION PERMEABLE (VOL. 9689 PG. 139 D.P.R.) | 2 30' IRREVOCABLE INGRESS/EGRESS EASEMENT                                      | 12 VARIABLE WIDTH WATER EASEMENT                     |   |
| 10 16' ELECTRIC, GAS, TELEPHONE & CABLE TV EASEMENT (VOL. 9630 PGS. 140-143 D.P.R.) | 20 30' PRIVATE INGRESS/EGRESS ESMT (VOL. 20001, PG. 2036 D.P.R.)  | 3 VARIABLE WIDTH ELECTRIC, GAS, TELEPHONE & CABLE EASEMENT                     | 13 VARIABLE WIDTH INGRESS / EGRESS EASEMENT          |   |
|   |   |  | 14 25' X 25' SANITARY SEWER TURN AROUND EASEMENT     |   |

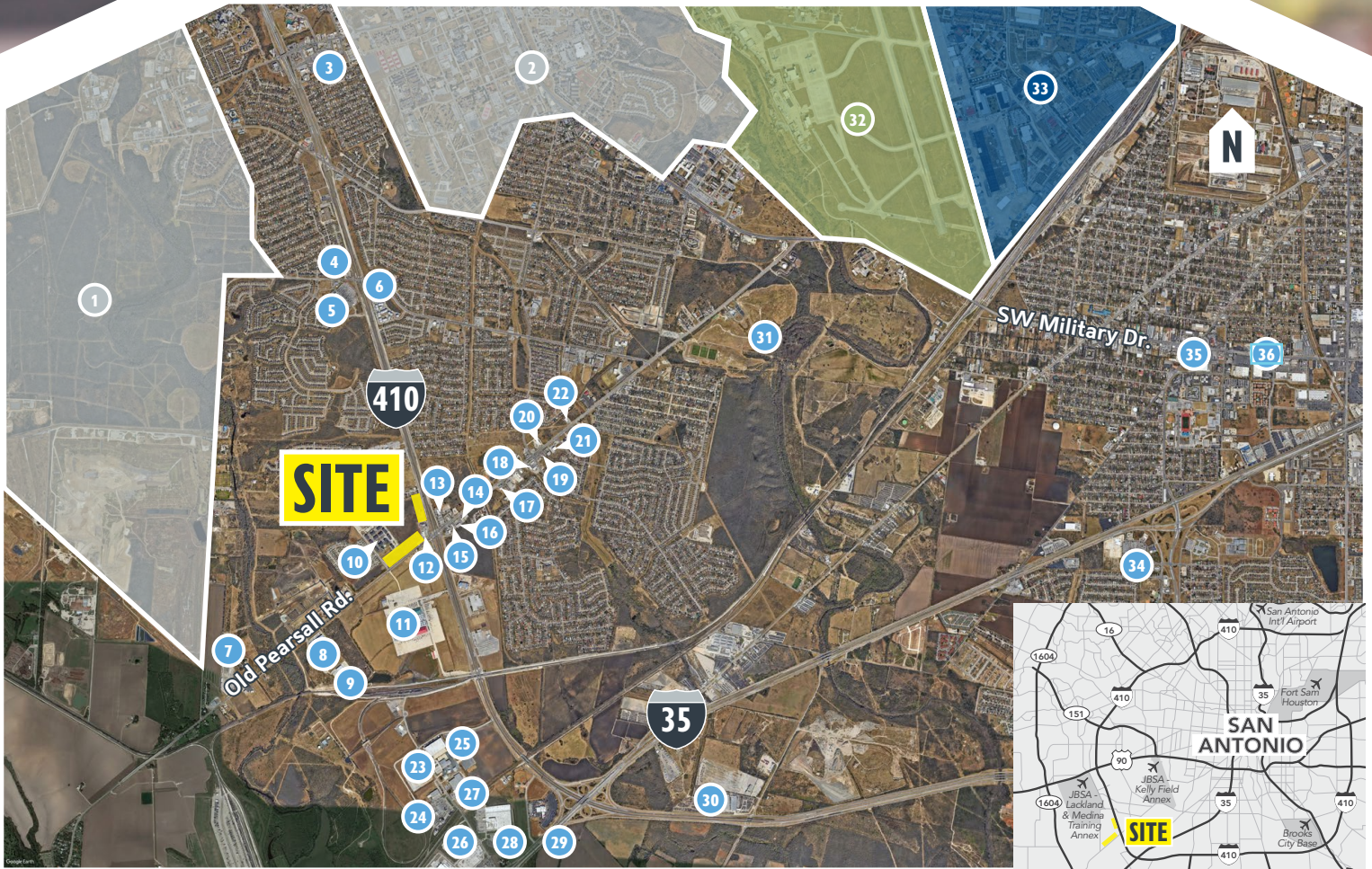
**KEY NOTES**

- ACCESS EASEMENTS
- DRAINAGE EASEMENTS
- ACCESS & DRAINAGE EASEMENTS
- SCHOOL SIGN EASEMENT
- LOT 25 SIGN LOCATION
- PROPOSED SANITARY SEWER LINE
- PROPOSED WATER LINE



# RETAIL PADS

OLD PEARSALL RD. AND SW LOOP 410



- |                          |  |                    |                   |                                    |                     |
|--------------------------|--|--------------------|-------------------|------------------------------------|---------------------|
| 1 Lackland Airforce Base | 7 San Antonio Southwest Maintenance Facility | 13 Bill Miller BBQ | 19 Circle K       | 25 Schlumberger Pressure Pumping   | 31 Pearsall Park    |
| 2 Lackland Airforce Base | 8 Charger Water Treatments                   | 14 Taco Bell       | 20 CVS            | 26 Bay Valley Foods                | 32 Kelly Field      |
| 3 H-E-B                  | 9 Ceva Logistics                             | 15 McDonald's      | 21 Dollar Tree    | 27 Smurfit Kappa                   | 33 Port San Antonio |
| 4 Exxon                  | 10 The Scott at Medio Creek                  | 16 Domino's        | 22 Dollar General | 28 Maruchan                        | 34 Walmart          |
| 5 Walmart                | 11 Traders Village                           | 17 Auto Zone       | 23 HASA           | 29 North Park Toyota               | 35 Sam's Club       |
| 6 Shell                  | 12 KFC                                       | 18 Little Caesar's | 24 Aramark        | 30 San Antonio Truck and Equipment | 36 Target           |



Harry Adams V | 210.298.8548  
harry.adams@streamrealty.com

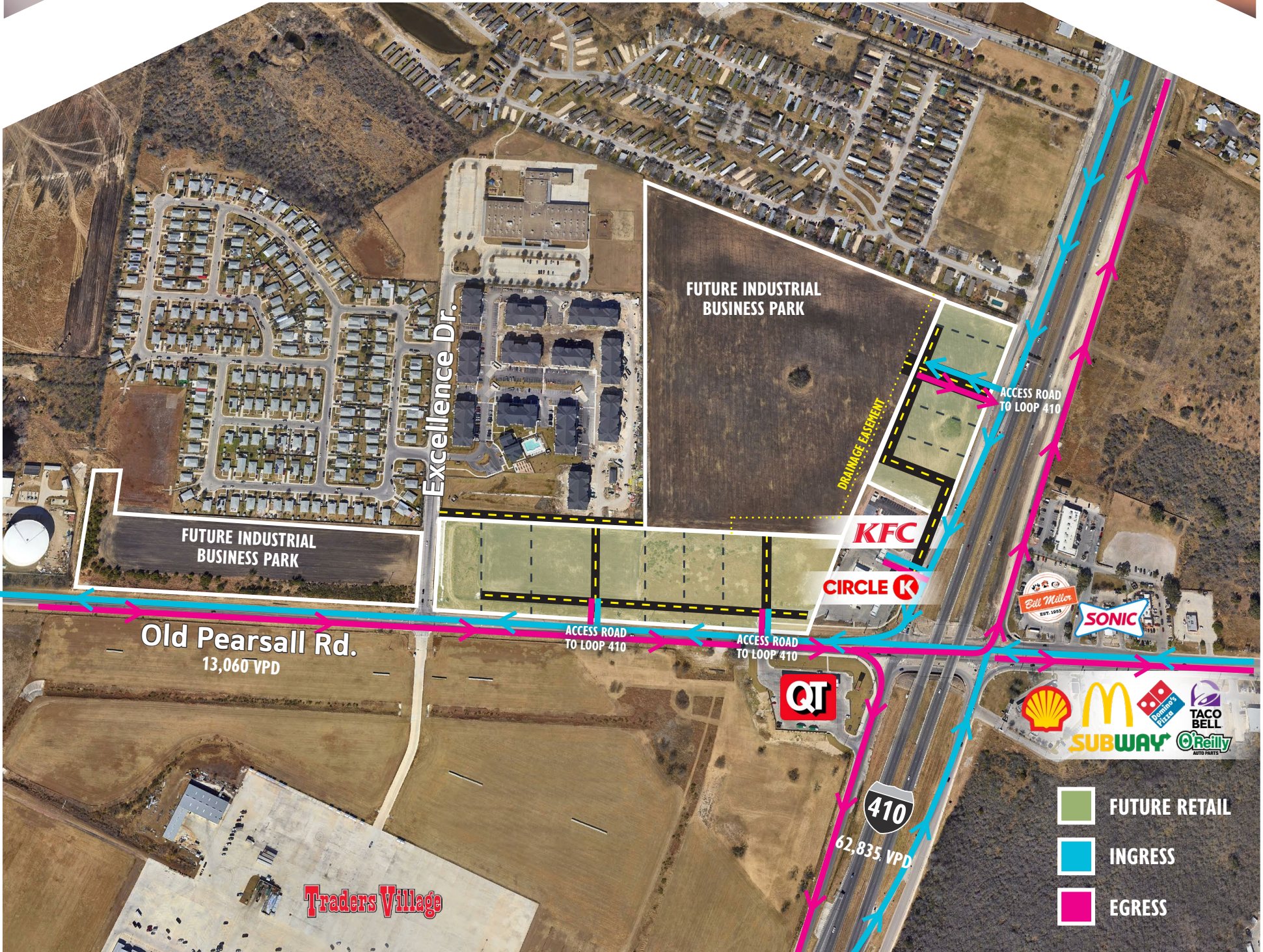


Copyright © 2024 Stream Realty Partners, All rights reserved.  
The information contained herein was obtained from sources believed reliable; however, Stream Realty Partners, L.P. make no guarantees, warranties, or representations as to the completeness or accuracy thereof. The presentation of this property is submitted subject to errors, change of price, or conditions, prior sale or lease, or withdrawal without notice.



OLD PEARSALL RD. AND SW LOOP 410

# RETAIL PADS



-  FUTURE RETAIL
-  INGRESS
-  EGRESS



## DRIVE TIMES

LOOP 410  
IMMEDIATE

LOOP 1604  
6 MINUTES

I-35  
5 MINUTES

US 90  
7 MINUTES