



2808 W 6th St

Sioux Falls, SD 57104

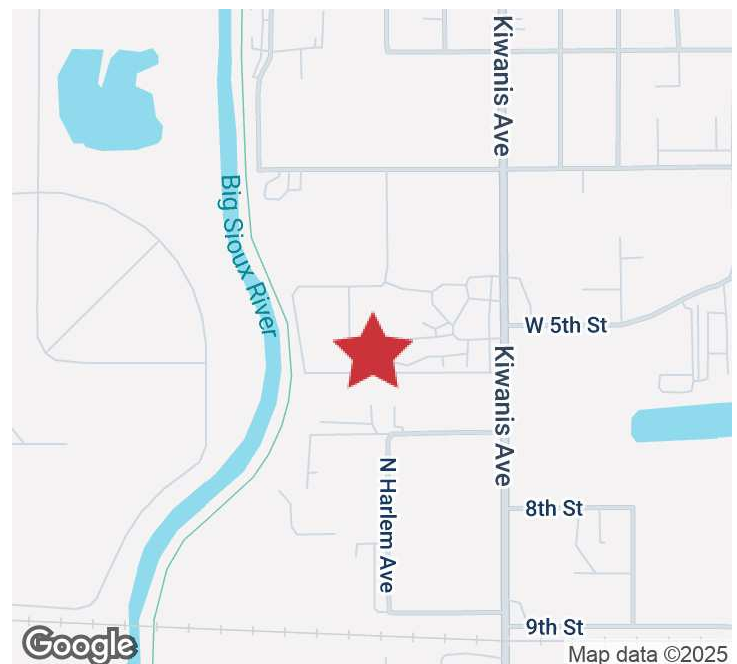
PROPERTY HIGHLIGHTS

- Newly remodeled
- Multiple offices
- large conference area of training
- gross lease includes utilities

LOCATION DESCRIPTION

Located just off of 6th St. and Kiwanis Ave, this building is located near the Big Sioux River and Fairgrounds. This prime industrial area neighbors Lightning Towing, Custom Tank & Trailer Repair, Ace Signs, and more.

Lease Rate	\$13.00 SF/YR + GROSS UTILITIES
Building Size	2,000 SF



BILL CONNELLY

Vice President

bconnelly@naisiouxfalls.com

605.254.2360

2500 W. 49th St. Suite 100

Sioux Falls, SD 57105

605.357.7100

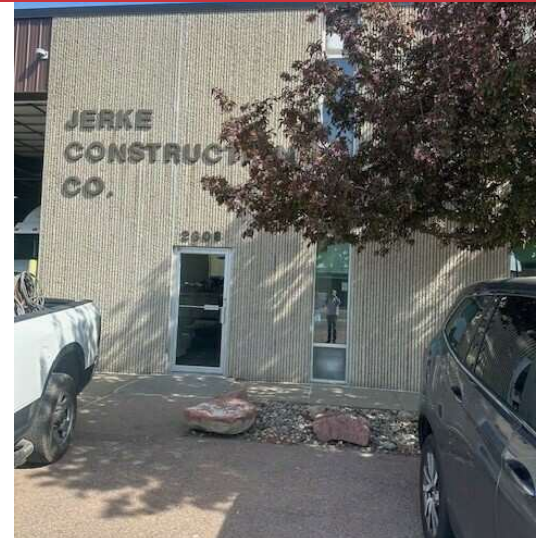
naisiouxfalls.com

PHOTOS

2808 W 6TH ST
Sioux Falls, SD 57104

FOR LEASE

Office Building

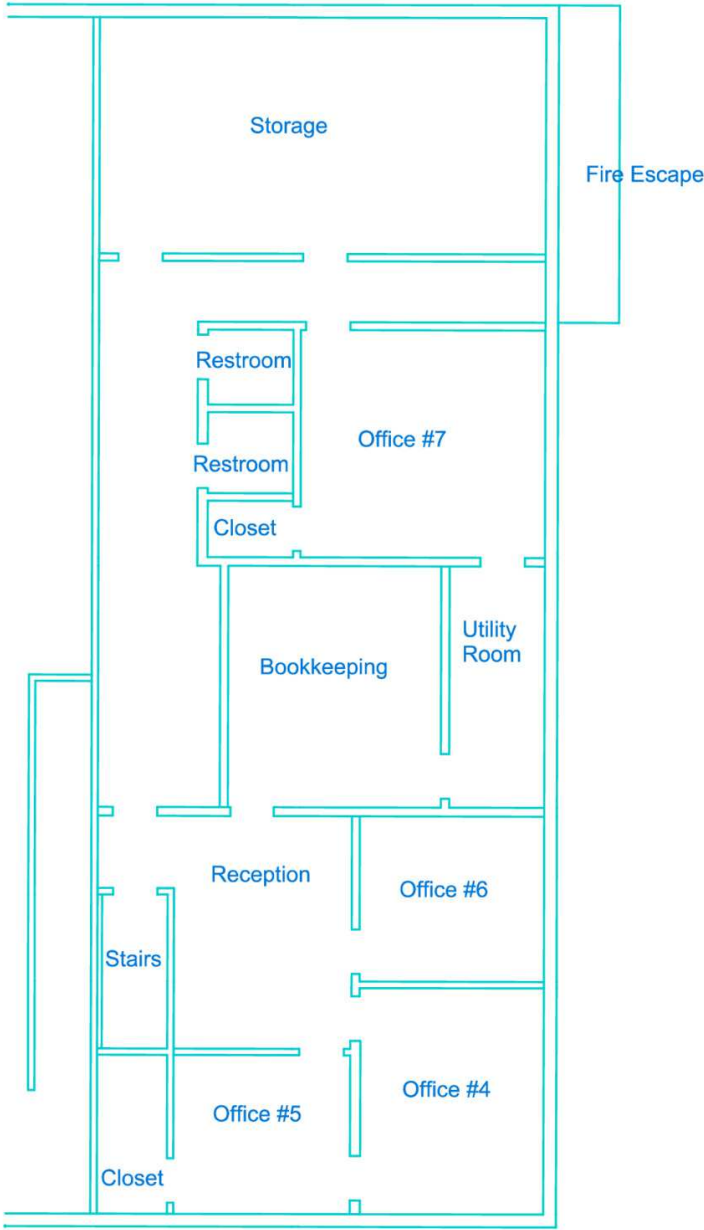


FLOOR PLANS

2808 W 6TH ST
Sioux Falls, SD 57104

FOR LEASE
Office Building

Sioux Falls - Second Floor Mezzanine

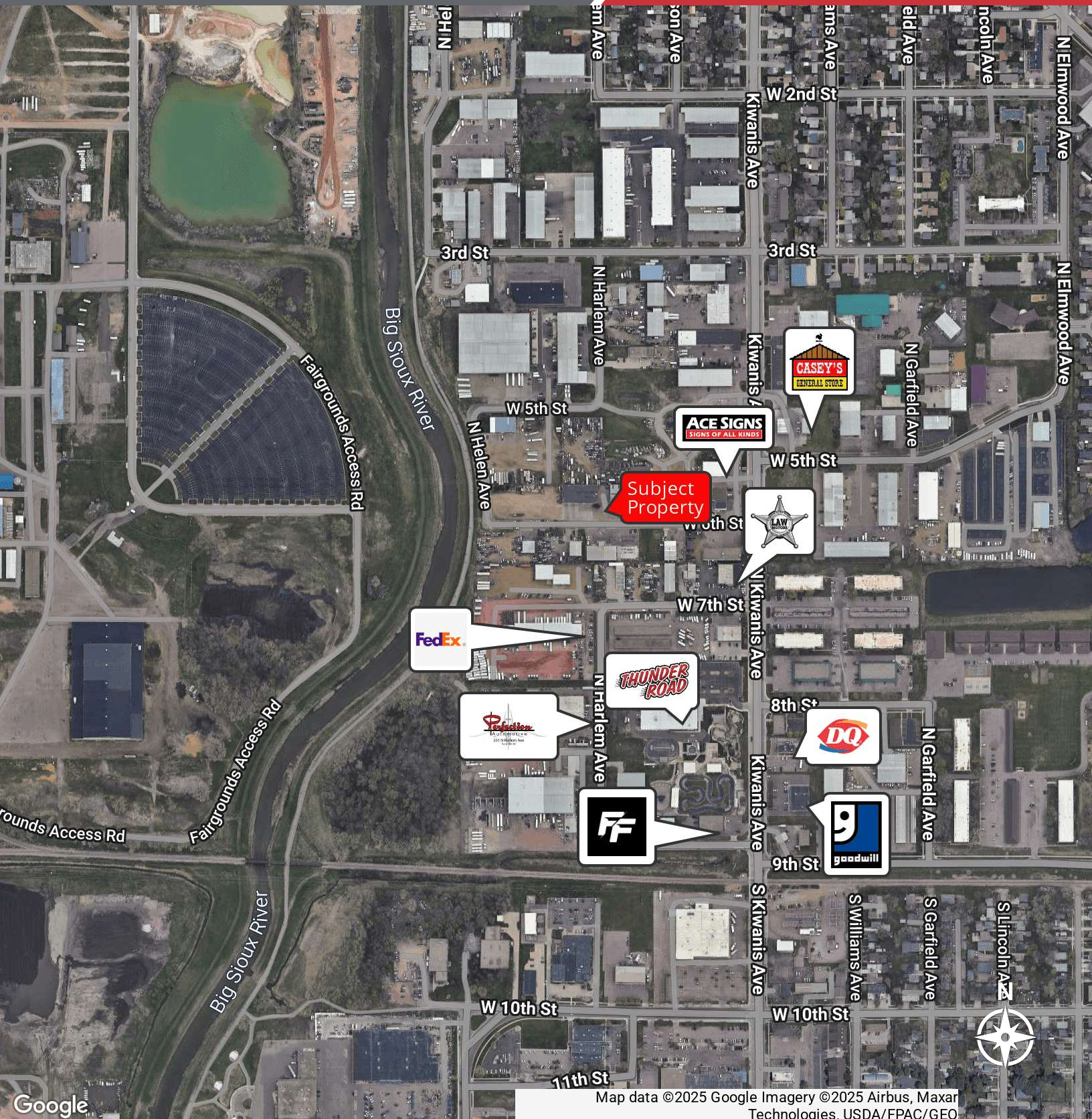


AERIAL MAP

2808 W 6TH ST
Sioux Falls, SD 57104

FOR LEASE

Office Building



Map data ©2025 Google Imagery ©2025 Airbus, Maxar Technologies, USDA/FPAC/GEO

NA Sioux Falls

2500 W. 49th St. Suite 100
Sioux Falls, SD 57105
605.357.7100
naisiouxfalls.com