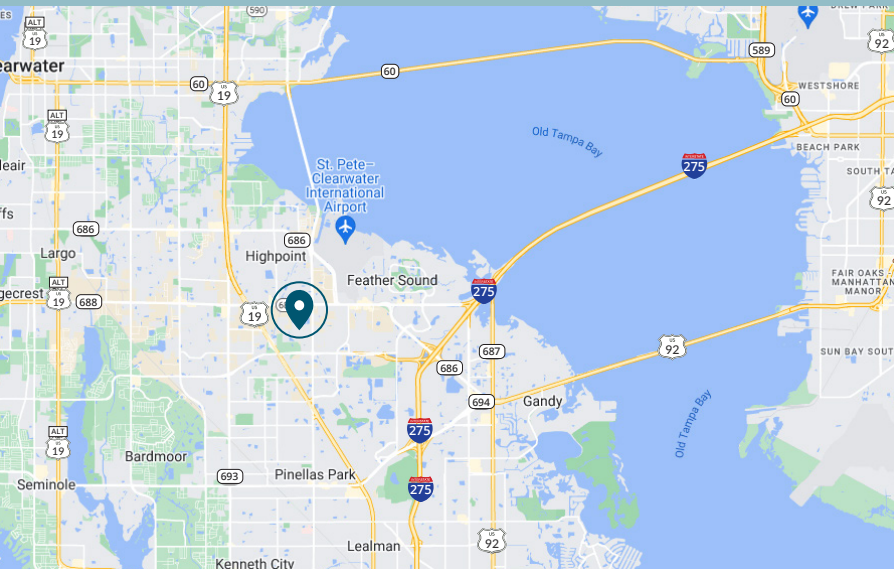




5200-5220 126<sup>th</sup> Avenue North  
Clearwater, FL 33760

## WAREHOUSE FOR LEASE



**PATRICK KELLY** | Regional Managing Director  
813.682.6210 | Pat.Kelly@FranklinSt.com

**BRAD HUTTON** | Director  
813.793.8492 | Brad.Hutton@FranklinSt.com



**ZENITH**



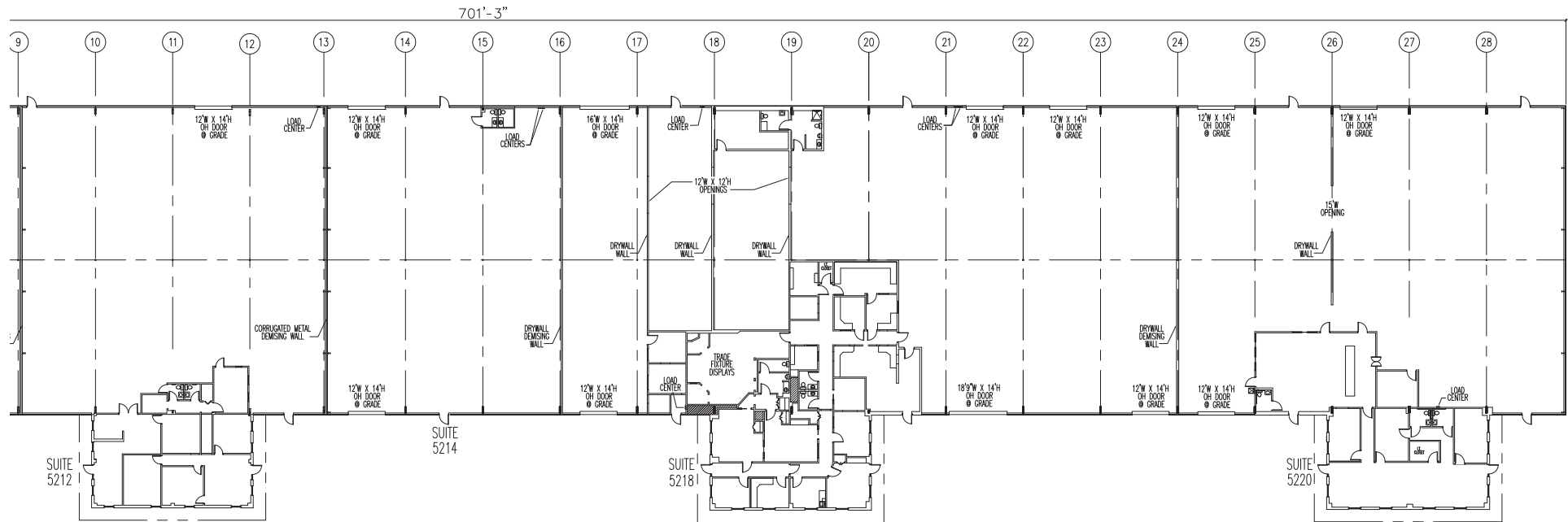
## PROPERTY HIGHLIGHTS

### 4,600 - 56,383 SF For Lease

- Located in the City of Pinellas Park
- Zoning: Heavy Industrial
- Includes 9,476 SF of combined office space
- Main building is demisable down to 14,221 SF
- Small bay space available
- 3 phase power
- Dock high & grade level loading
- 14' high roll-up doors

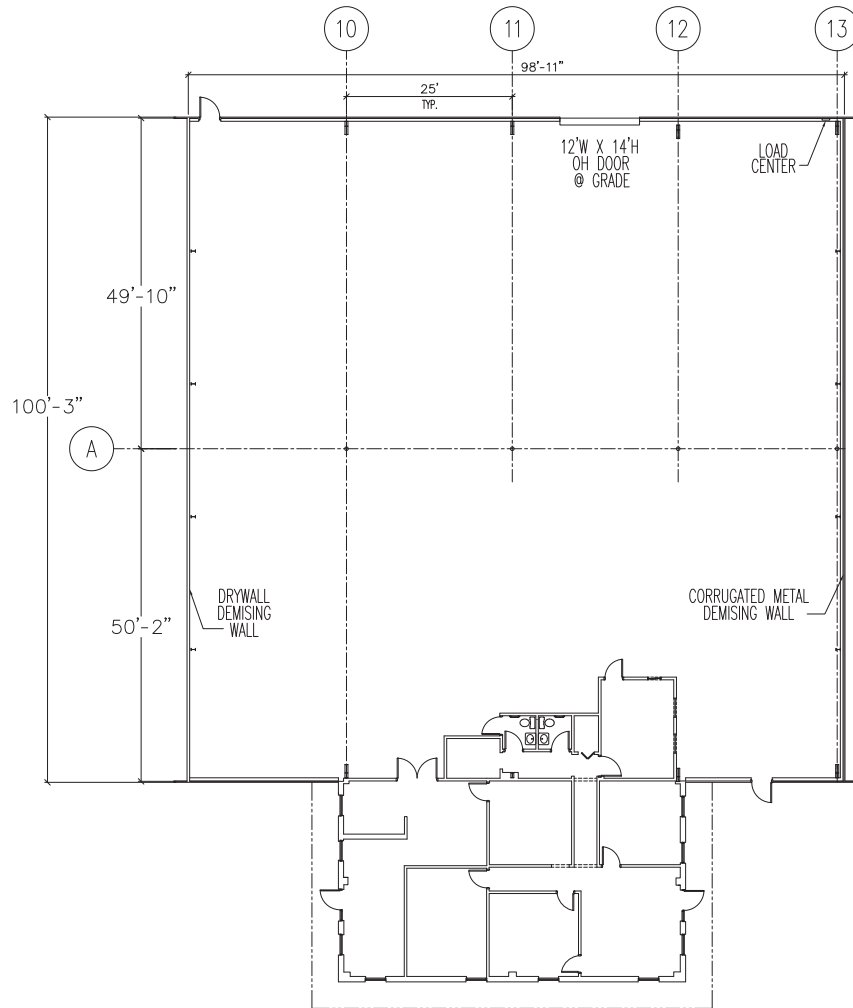


## BUILDING 5200: 56,383 SF FLOOR PLAN

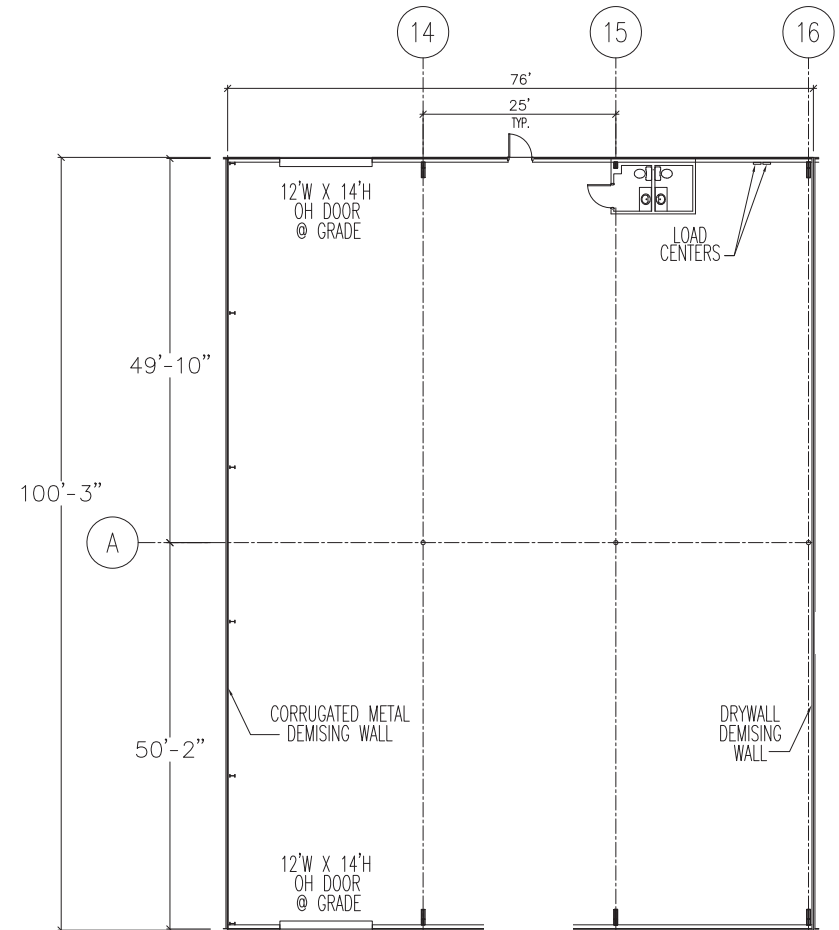


## BUILDING 5212: 11,969 SF FLOOR PLAN

Includes 1,908 SF Office Space

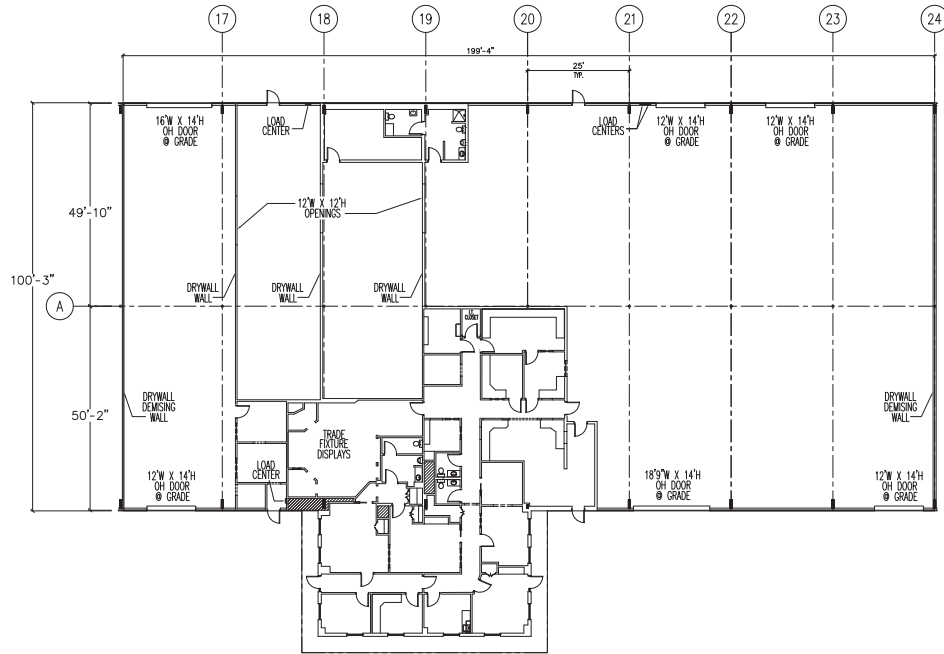


## BUILDING 5214: 7,619 SF FLOOR PLAN



## BUILDING 5218: 22,087 SF FLOOR PLAN

Includes 4,729 SF Office Space



## BUILDING 5220: 14,708 SF FLOOR PLAN

Includes 2,839 SF Office Space

