

# KENNESAW HEAVY INDUSTRIAL

3100 KENNESAW ST, FORT MYERS, FL 33916

CONFIDENTIAL - DO NOT DISTURB TENANT

FOR SALE OR LEASE



Call for Offers  
April 27th, 2026



**Russ McCone**  
Senior Advisor  
239.272.1306  
Russ.McCone@TrinityCRE.com

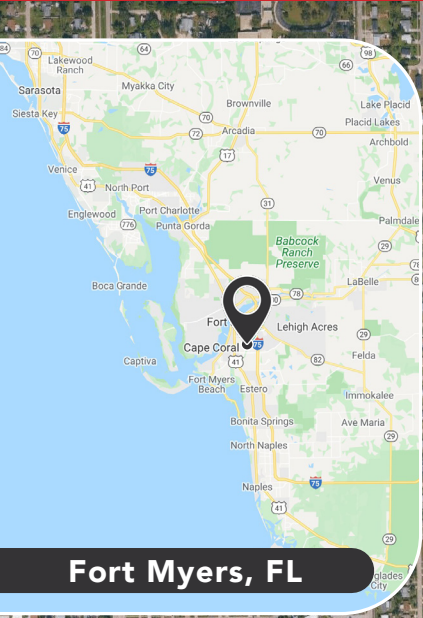
**Dan O'Berski**  
Partner  
239.334.3040  
Dan.OBerski@TrinityCRE.com



# KENNESAW HEAVY INDUSTRIAL

3100 KENNESAW ST, FORT MYERS, FL 33916

CONFIDENTIAL - DO NOT DISTURB TENANT



## 2026 DEMOGRAPHICS 3100 KENNESAW ST

### LEE COUNTY



AVERAGE H.H INCOME

\$117,239



POPULATION

865,871



EMPLOYMENT DENSITY

284,033

## PROPERTY FEATURES

PRICE

Call for Offers due 4/27/2026

AVAILABLE

9,754± SF | 4.5 AC

ZONING

IH (City of Fort Myers)

LOCATION

This Fort Myers site offers convenient access in an established industrial area with a functional layout suitable for service, storage, or light commercial use.



TrinityCRE.com

9450 Corkscrew Palms Cir • Suite 101 • Estero, FL 33928

© 2026 Trinity Commercial Group

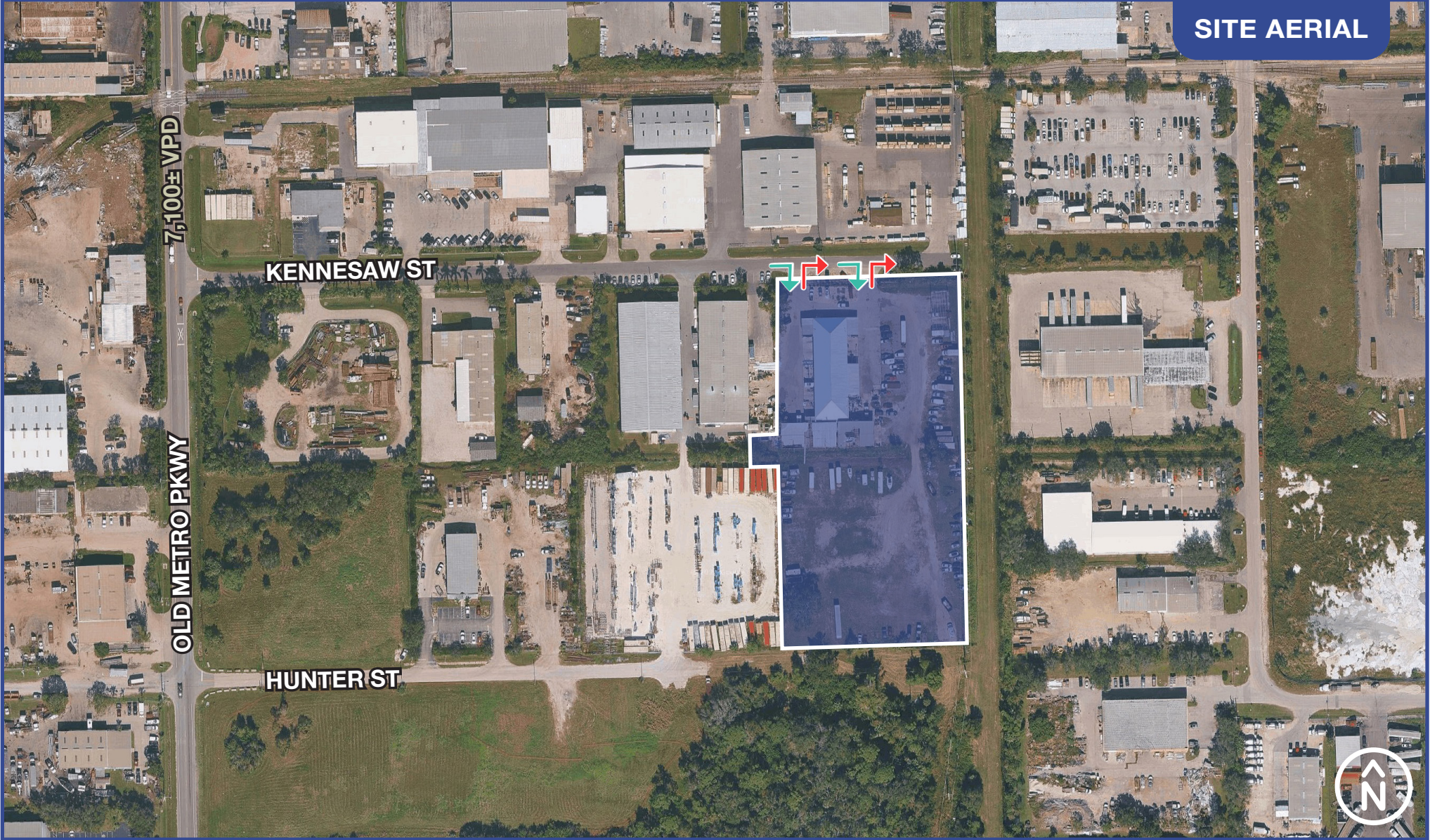
This information is considered accurate, but not guaranteed.



# KENNESAW HEAVY INDUSTRIAL

3100 KENNESAW ST, FORT MYERS, FL 33916

**CONFIDENTIAL - DO NOT DISTURB TENANT**



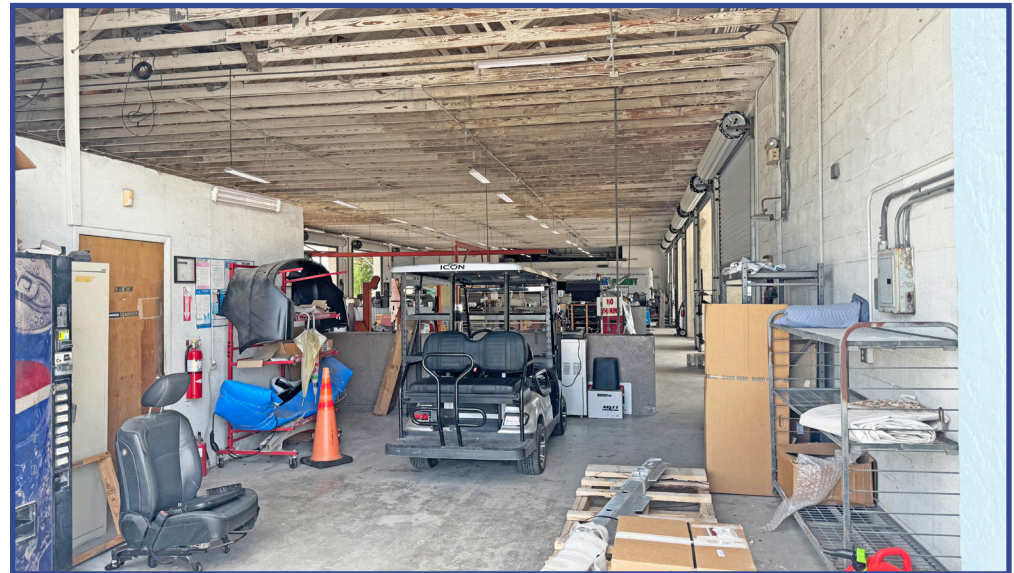
TrinityCRE.com  
9450 Corkscrew Palms Cir • Suite 101 • Estero, FL 33928  
© 2026 Trinity Commercial Group  
This information is considered accurate, but not guaranteed.



# KENNESAW HEAVY INDUSTRIAL

3100 KENNESAW ST, FORT MYERS, FL 33916

CONFIDENTIAL - DO NOT DISTURB TENANT



TrinityCRE.com  
9450 Corkscrew Palms Cir • Suite 101 • Estero, FL 33928  
© 2026 Trinity Commercial Group  
This information is considered accurate, but not guaranteed.

