

FOR LEASE

±30,001 SF ANCHOR BOX AVAILABLE FOR LEASE

6222 COMMERCE PALMS BOULEVARD, NEW TAMPA, FL 33647



CLICK TO VIEW LISTING VIDEO

LOCATED JUST OFF  75



CO-TENANTS INCLUDE:



EXCLUSIVE RETAIL LEASING

KATZ & ASSOCIATES









RETAIL REAL ESTATE ADVISORS

DAVID EGGNATZ
VICE PRESIDENT
davideggnatz@katzretail.com
(954) 579-2927

DANIEL SOLOMON, CCIM
PRINCIPAL
danielsolomon@katzretail.com
(954) 401-2181

PROPERTY OVERVIEW

HIGHLIGHTS

- Premier power anchored center
- 50,000 VPD on Bruce B Downs and 114,000 VPD on 
- Ample parking
- Pylon signage
- High incomes (over \$125K avg HH Income in 3 miles) with many families and residential growth
- Join several national tenants including:       
- ±30,001 SF anchor available



DEMOGRAPHICS

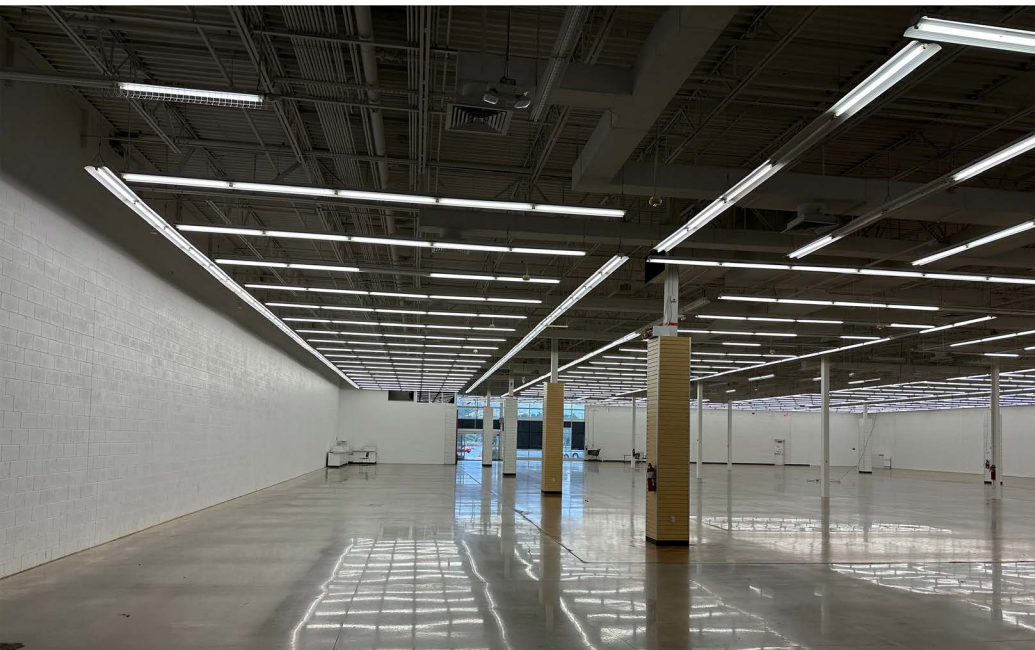
| | 1 Mile | 3 Miles | 5 Miles |
|-------------------|-----------|------------|------------|
| POPULATION | 6,326 | 35,714 | 145,595 |
| HOUSEHOLDS | 2,640 | 14,299 | 56,067 |
| DAYTIME EMPLOYEES | 3,302 | 19,309 | 75,479 |
| AVERAGE HH INCOME | \$118,540 | \$125,544 | \$95,580 |
| | 5 Minutes | 10 Minutes | 15 Minutes |
| POPULATION | 11,931 | 87,165 | 232,388 |
| HOUSEHOLDS | 5,024 | 34,560 | 88,744 |
| DAYTIME EMPLOYEES | 6,396 | 45,847 | 118,466 |
| AVERAGE HH INCOME | \$125,851 | \$99,368 | \$89,091 |



MARKET SQUARE AT TAMPA PALMS | EXECUTIVE SUMMARY



MARKET SQUARE AT TAMPA PALMS | EXTERIOR PHOTOS



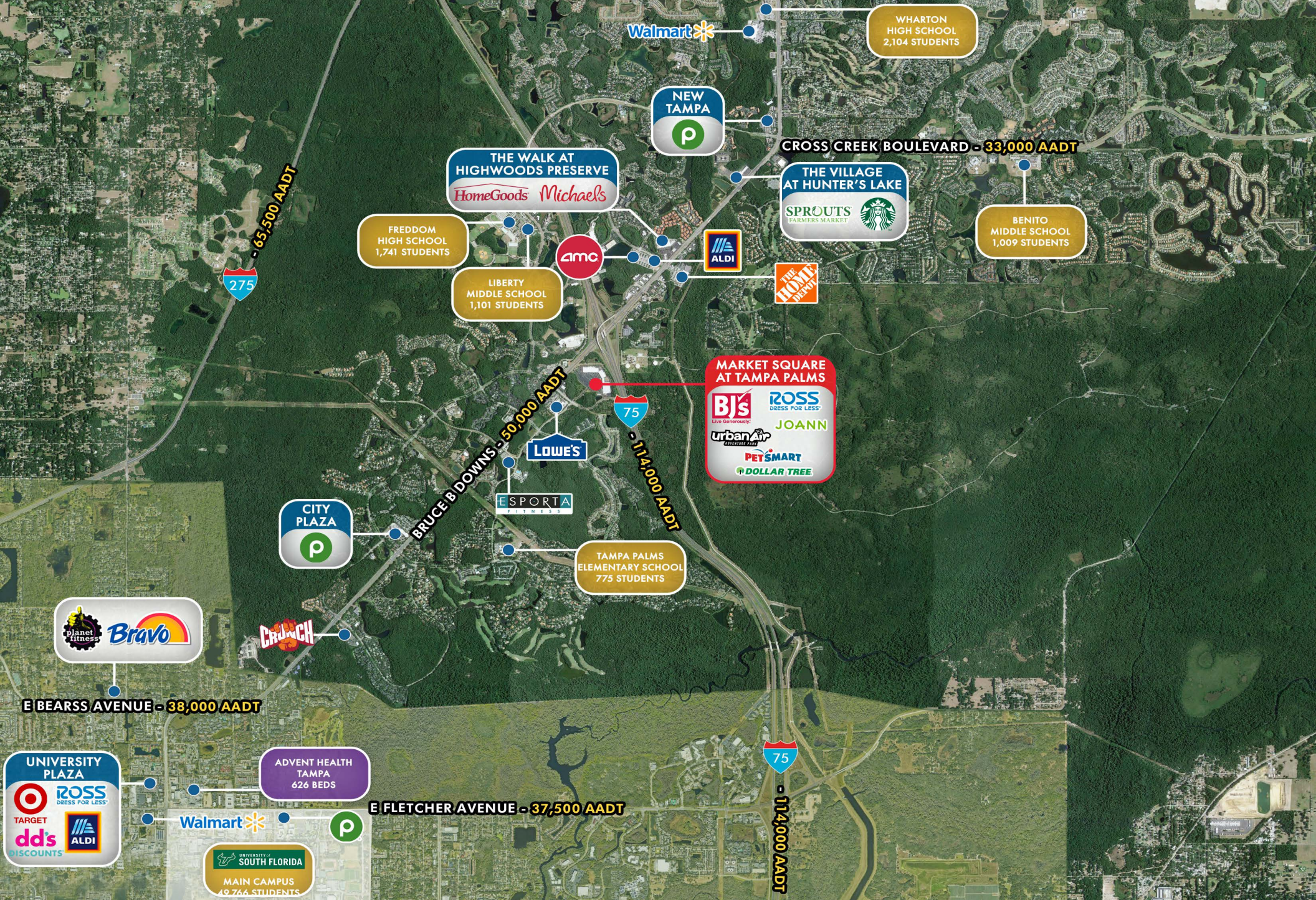
MARKET SQUARE AT TAMPA PALMS | INTERIOR PHOTOS



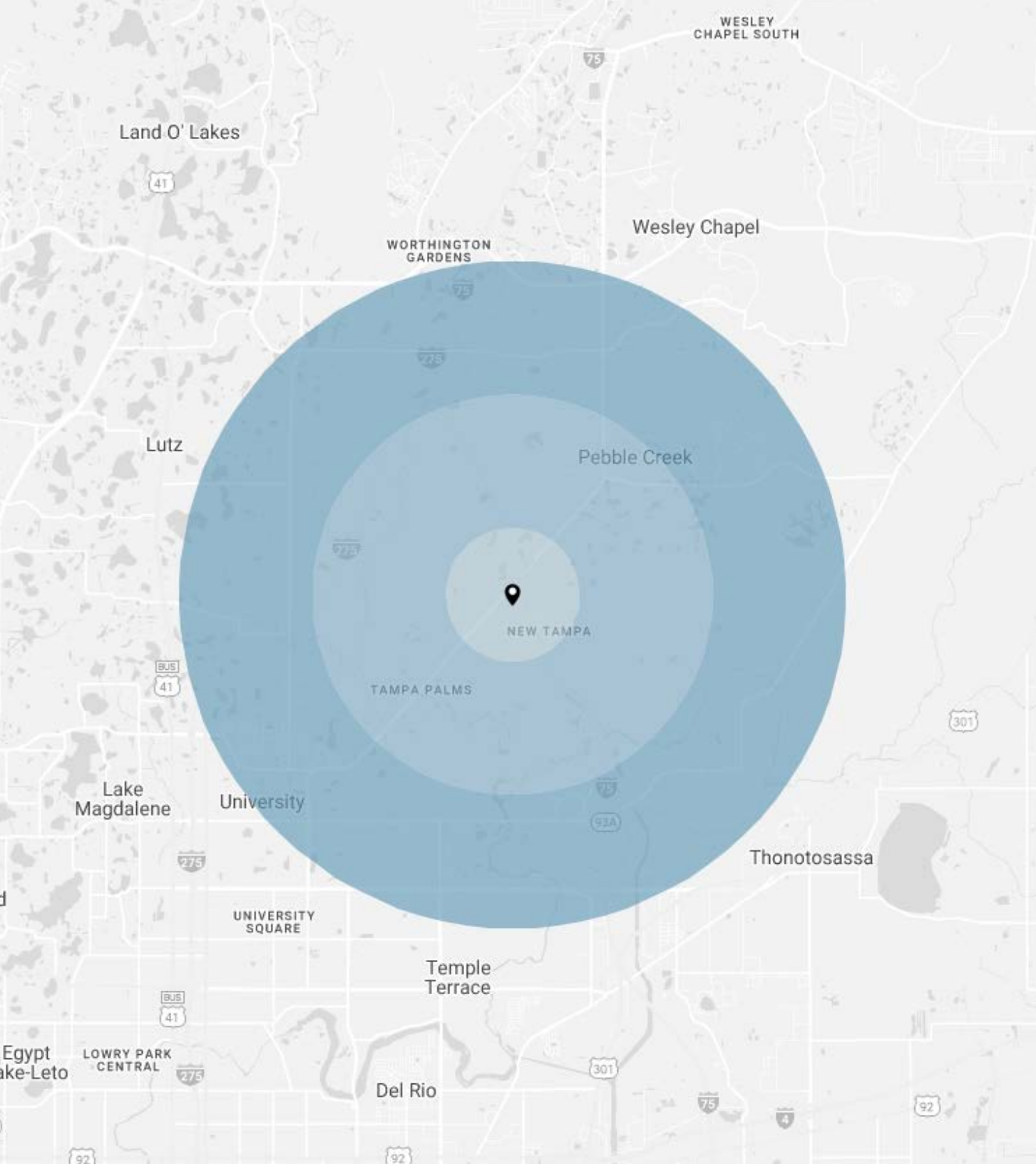
MARKET SQUARE AT TAMPA PALMS | SITE PLAN



MARKET SQUARE AT TAMPA PALMS | CLOSE INTERSECTION AERIAL



MARKET SQUARE AT TAMPA PALMS | MARKET AERIAL



CONTACT AGENTS

DAVID EGGNATZ
VICE PRESIDENT
davideggnatz@katzretail.com
(954) 579-2927

DANIEL SOLOMON, CCIM
PRINCIPAL
danielsolomon@katzretail.com
(954) 401-2181



KATZ & ASSOCIATES

RETAIL REAL ESTATE ADVISORS

katzretail.com

The information herein was obtained from third parties and has not been independently verified by Katz & Associates. Any and all interested parties should have their choice of experts inspect the property and verify all information. Katz & Associates makes no warranties or guarantees as to the information given to any prospective buyer or tenant. REV: 01.23.23