

View this email [online](#).  
Forward to a colleague

## Spec Suites Available FOR LEASE

645 NE 125th Street  
North Miami, FL 33161



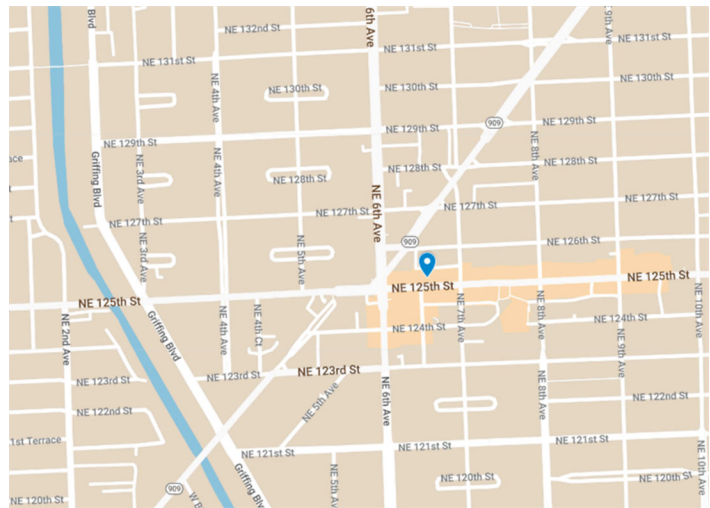
### 4,312 SF Move-In Ready Class A Office Spec Suites Available

#### Property Highlights

- Sleek and contemporary facade with large windows that provide abundant natural light and a striking visual appeal.
- Large, floor-to-ceiling windows offer a bright and open atmosphere, enhancing productivity and well-being.
- Strategically situated for easy access, with an inviting street presence and convenient proximity to local amenities.
- Designed to accommodate dynamic businesses, with flexible layouts that can be customized for a variety of professional needs.

#### Area Amenities

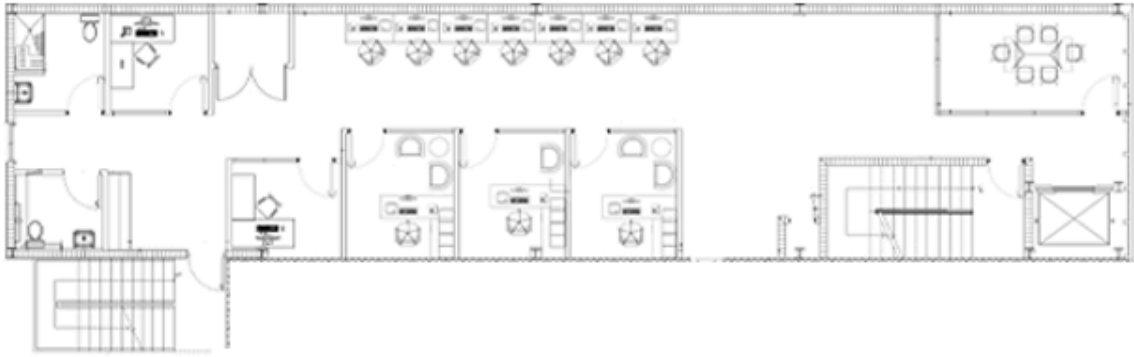
- 0.2 mi from Museum of Contemporary Art North Miami
- 1.3 mi from Whole Foods Market
- 2.5 mi from Miami Shores Country Club
- 1.5 mi from Biscayne Shores and Gardens Park
- 4.0 mi from Bal Harbour Shops



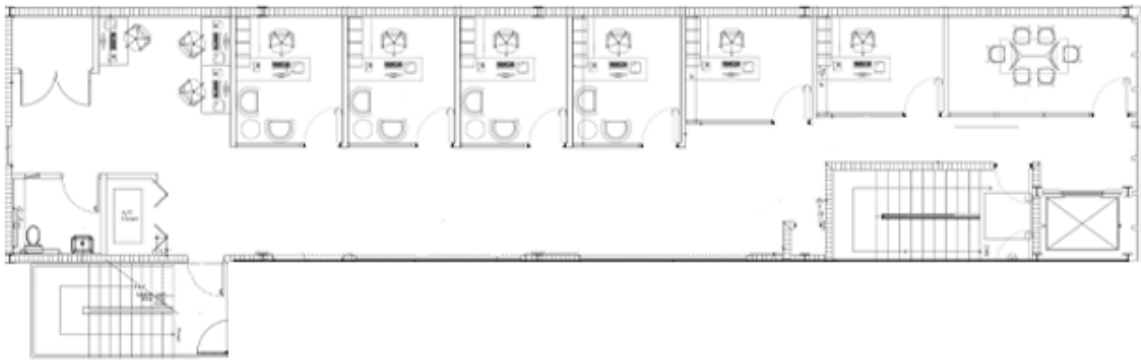


## Floorplans

### 2nd Floor



### 3rd Floor



#### Space Available

2nd Floor	2,156 SF	\$45.00 NNN	Spec Suites Available Immediately
3rd Floor	2,156 SF	\$45.00 NNN	Spec Suites Available Immediately

#### Contact

**Brian Gale**  
 Vice Chairman  
 Direct: [+1 305 351-2462](tel:+13053512462)  
[brian.gale@cushwake.com](mailto:brian.gale@cushwake.com)

333 SE 2nd Avenue Suite 3900  
 Miami, FL 33131 | USA  
[cushmanwakefield.com](http://cushmanwakefield.com)

## Join the conversation online



[www.cushmanwakefield.com](http://www.cushmanwakefield.com)

This email has been sent to you by [Brian Gale brian.gale@cushwake.com](mailto:brian.gale@cushwake.com). To ensure delivery, add us to your address book or safe senders list. If you wish to unsubscribe from future emails, please [click here](#). We typically process unsubscribe requests within 5 working days. [Click here](#) for our privacy notice.

Global Headquarters: Cushman & Wakefield | 225 W. Wacker Drive, Suite 3000 | Chicago, IL 60606 | USA

© 2024 Cushman & Wakefield. All rights reserved. The information contained in this communication is confidential, may be privileged and is intended for the exclusive use of the above named addressee(s). If you are not the intended recipient(s), you are expressly prohibited from copying, distributing, disseminating, or in any other way using any information contained within this communication. This information has been obtained from sources believed to be reliable but has not been verified. NO WARRANTY OR REPRESENTATION, EXPRESS OR IMPLIED, IS MADE AS TO THE CONDITION OF THE PROPERTY (OR PROPERTIES) REFERENCED HEREIN OR AS TO THE ACCURACY OR COMPLETENESS OF THE INFORMATION CONTAINED HEREIN, AND SAME IS SUBMITTED SUBJECT TO ERRORS, OMISSIONS, CHANGE OF PRICE, RENTAL OR OTHER CONDITIONS, WITHDRAWAL WITHOUT NOTICE, AND TO ANY SPECIAL LISTING CONDITIONS IMPOSED BY THE PROPERTY OWNER(S). ANY PROJECTIONS, OPINIONS OR ESTIMATES ARE SUBJECT TO UNCERTAINTY AND DO NOT SIGNIFY CURRENT OR FUTURE PROPERTY PERFORMANCE. This e-mail may be considered advertising under federal law.