

WEST OKC INDUSTRIAL

713 N Morgan Road, Oklahoma City, OK 73127

INDUSTRIAL PROPERTY FOR LEASE



OFFERING SUMMARY

Lease Rate:	\$8.25 SF/yr (NNN)
Available SF:	12,471 SF
Lot Size:	1 Acre MOL
Building Size:	12,471 SF
Year Built/Renovated:	2003/2025

PROPERTY DESCRIPTION

This property boasts an ideal location with easy access to I-40, making it a convenient hub for any kind of service company. Spanning across a 1-acre site, the property features a fully fenced yard and an 18' clear height, facilitated by (2) 14' overhead doors. Inside, 1,800 SF of modern office space with (4) private offices, a conference room, and a comfortable break room. Plus, a separate bathroom for the office and warehouse.

PROPERTY HIGHLIGHTS

- Easy access to I-40
- 1 Acre site with fully fenced graveled yard
- 18' Clear height
- (2) 14' Overhead doors
- 1,800 SF of office space
- (4) Private offices; conference room; break room
- (2) Bathrooms

ANDREW HWANG, ESQ

Co-Founder & Partner
734.223.6284
andrew@adeptcre.com

ADEPT
COMMERCIAL REAL ESTATE

WEST OKC INDUSTRIAL

713 N Morgan Road, Oklahoma City, OK 73127

INDUSTRIAL PROPERTY FOR LEASE



ANDREW HWANG, ESQ

Co-Founder & Partner
734.223.6284
andrew@adeptcre.com

ADEPT
COMMERCIAL REAL ESTATE

WEST OKC INDUSTRIAL

713 N Morgan Road, Oklahoma City, OK 73127

INDUSTRIAL PROPERTY FOR LEASE



ANDREW HWANG, ESQ

Co-Founder & Partner
734.223.6284
andrew@adeptcre.com

ADEPT
COMMERCIAL REAL ESTATE

WEST OKC INDUSTRIAL

713 N Morgan Road, Oklahoma City, OK 73127

INDUSTRIAL PROPERTY FOR LEASE



ANDREW HWANG, ESQ

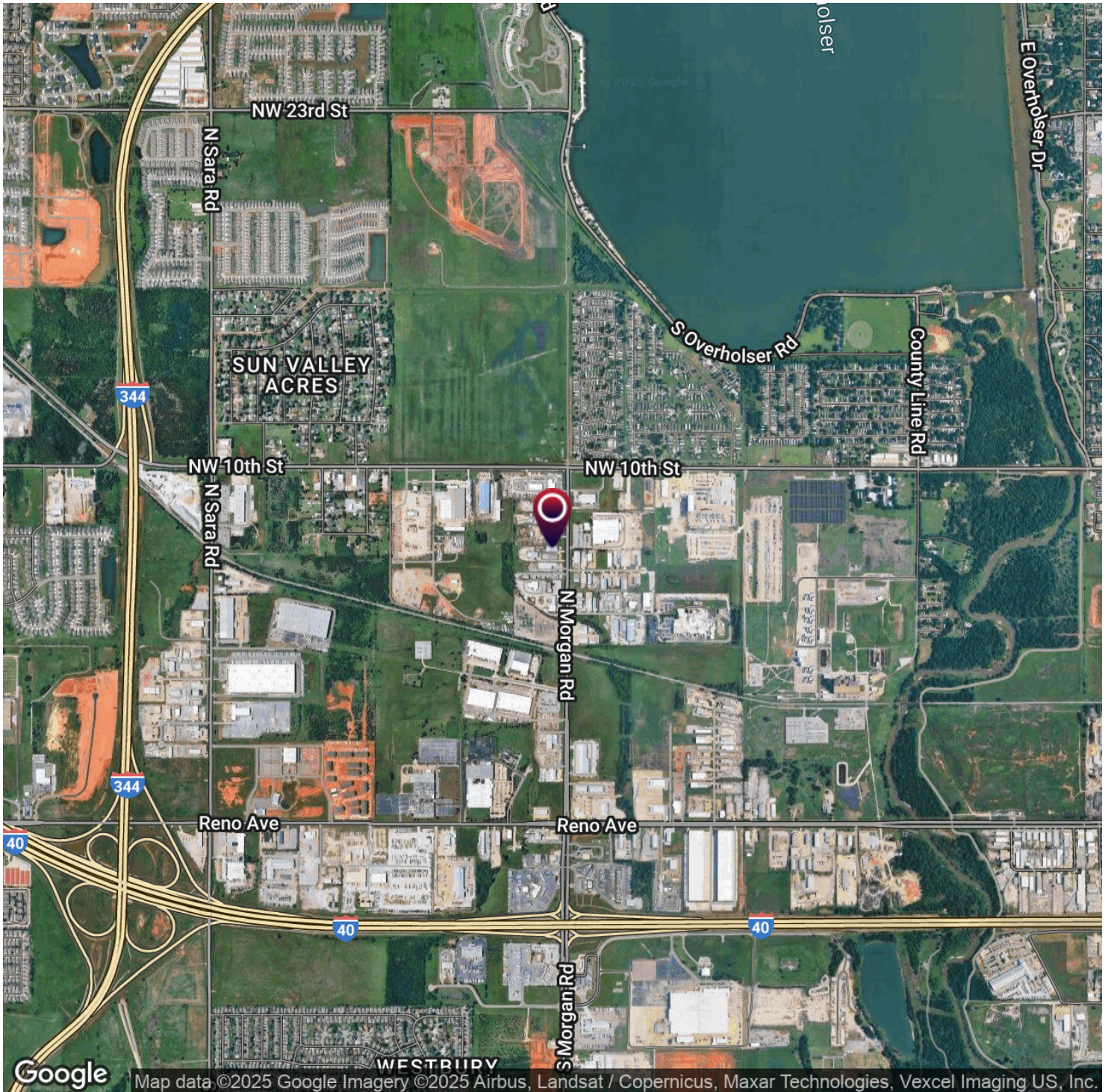
Co-Founder & Partner
734.223.6284
andrew@adeptcre.com

ADEPT
COMMERCIAL REAL ESTATE

WEST OKC INDUSTRIAL

713 N Morgan Road, Oklahoma City, OK 73127

INDUSTRIAL PROPERTY FOR LEASE



ANDREW HWANG, ESQ

Co-Founder & Partner
734.223.6284
andrew@adeptcre.com

ADEPT
COMMERCIAL REAL ESTATE