

COMMERCIAL SPACE FOR LEASE

39 E Cross St

Baltimore, MD 21230



AVAILABLE SPACES

6,000SF

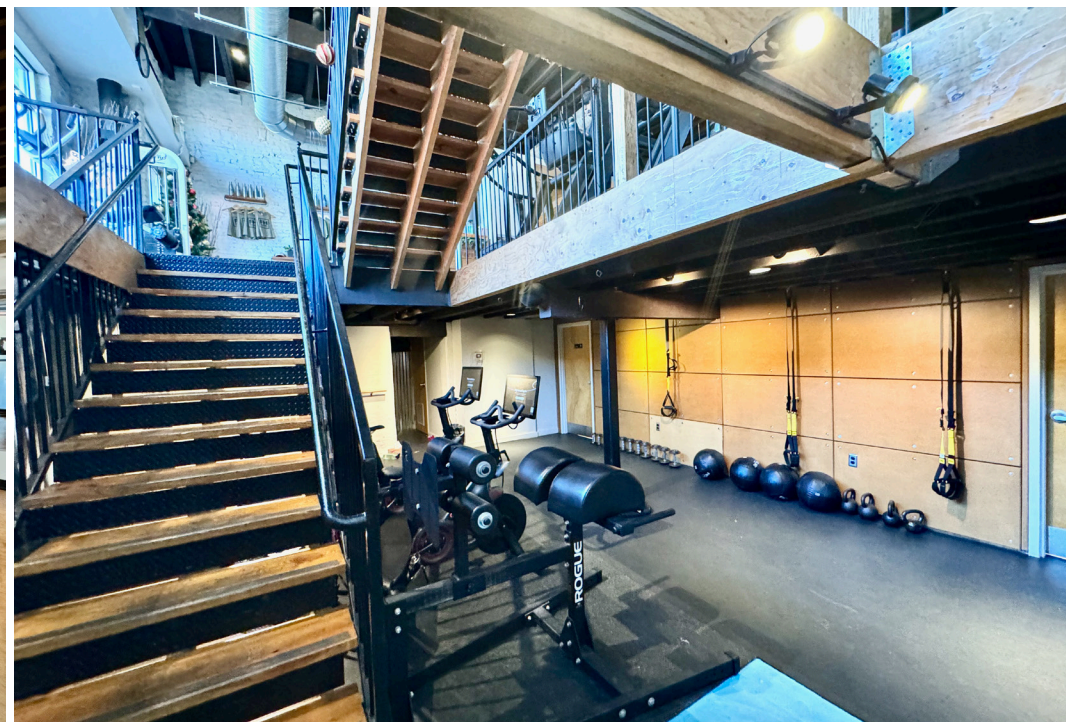
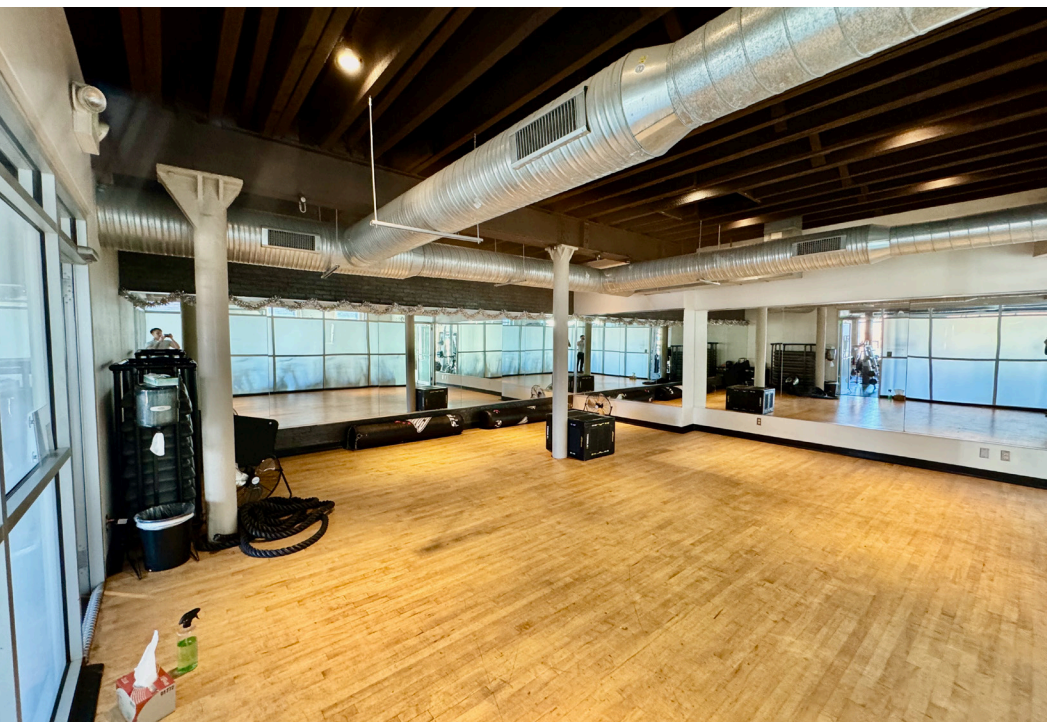
(2 STORIES PLUS BASEMENT)



Prime Retail / Commercial Opportunity in Federal Hill

Discover an exceptional leasing opportunity in the heart of Federal Hill, one of Baltimore's most vibrant and dynamic neighborhoods. This well-maintained **6,000 sq ft retail space** spans **three finished levels** ideal for a wide range of uses.

PHOTOS



LOCATION



Located directly adjacent to the bustling Cross Street Market and surrounded by a dense mix of residential, retail, dining and entertainment destinations, this property offers unmatched exposure in a high-traffic, walkable urban environment just south of the Inner Harbor and downtown Baltimore.

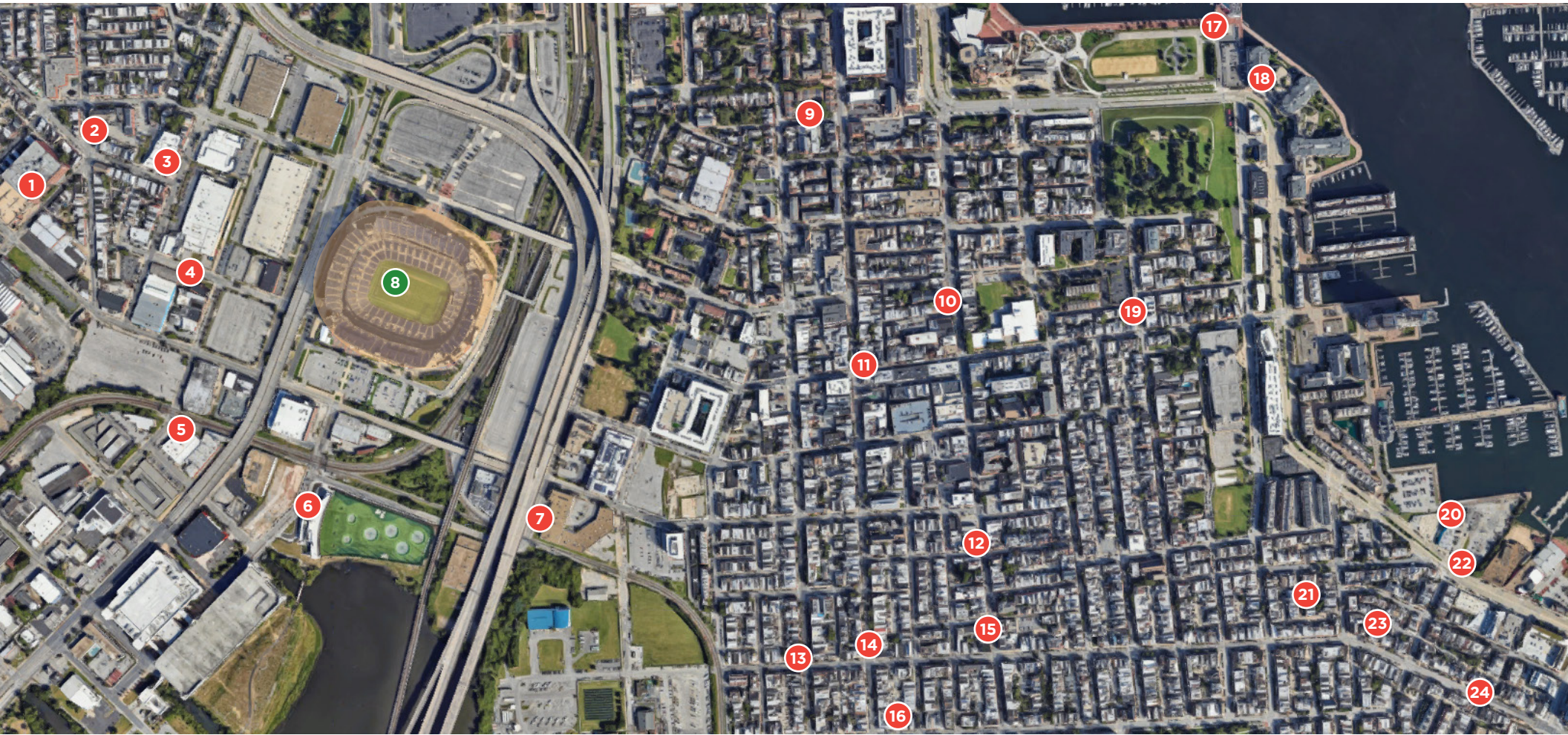
LOCATION



The neighborhood attracts a blend of young professionals, families, and affluent consumers with above-market median incomes and strong household spending power, creating a robust customer base for retail, hospitality, fitness, or service-oriented businesses.

With strong pedestrian activity and proximity to transit and parking options, this space presents a compelling opportunity to join a thriving commercial corridor.

AERIAL MAP



1 - WICO STREET BEER CO
2 - MARTY'S DELI
3 - PICKETT BREWING COMPANY
4 - GAMEDAY FIREHOUSE
5 - CHECKERSPOT BREWING COMPANY
6 - TOPGOLF BALTIMORE
7 - M8 BEER
8 - M&T BANK STADIUM

9 - MORNING MUGS
10 - BLUE MOON TOO
11 - WATERSHED
12 - OCTOBAR
13 - AJ'S ON HANOVER
14 - DELIA FOLEY'S
15 - SHOYOU SUSHI
16 - THE GRATEFUL FED

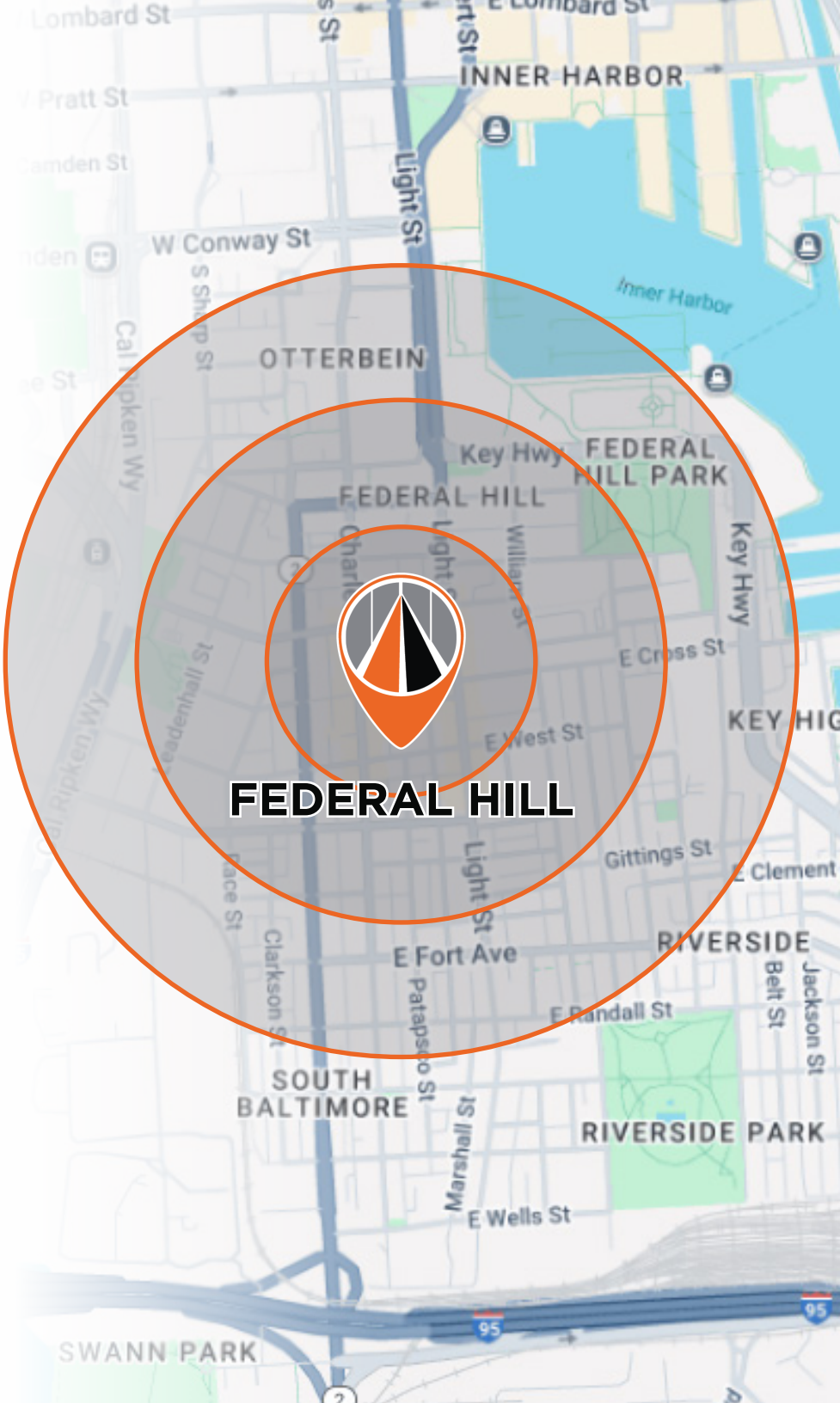
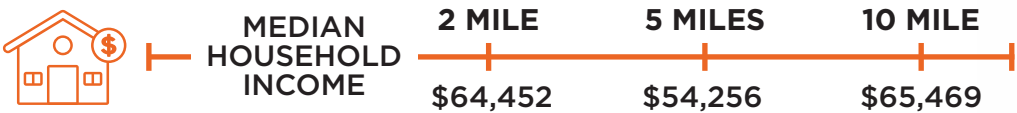
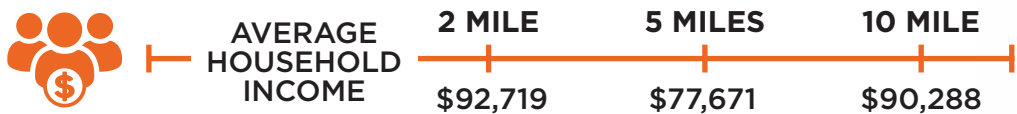
17 - RUSTY SCUPPER RESTAURANT & BAR
18 - AMMOORA
19 - THE OUTPOST AMERICAN TAVERN
20 - LITTLE HAVANA
21 - MINDPUB CAFE
22 - ORDER & CHAOS COFFEE
23 - BARFLY'S
24 - EKIBEN

LOCATION MAP



DEMOGRAPHICS | 39 E CROSS ST

HOUSEHOLDS & INCOME





**39 E CROSS ST
BALTIMORE, MD 21230**

CONTACT

Austin Tran

Leasing and Sales Representative

Cell: 410-491-4321

Work: 410-342-5263

Email: austin@avenuerealestatellc.com

web: www.avenuerealestatellc.com



9711 Washingtonian Blvd STE 550

Gaithersburg MD 20878

410-342-5263

To view Our Available Listings, Please visit
www.avenerealestate.com/properties