

SE 21st Ave

3737-3741-3743

PORTLAND, OREGON

FOR SALE OR
LEASE
\$12.00/SQ/YR
NNN



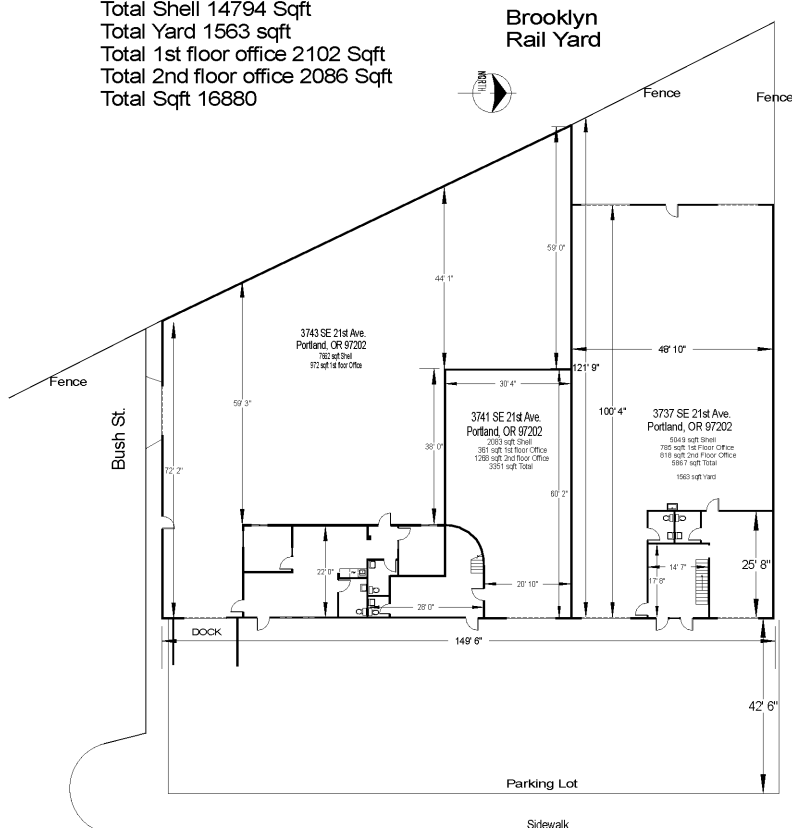
Property Features

- Fully Conditioned Office Space
- Ample Parking
- Close in Southeast Portland
- 20' Ceilings / 18' Clear Height
- Full Dock Available
- 3-Phase Power

3737-3741-3743 SE 21st Ave.

Portland, OR 97202

Total Shell 14794 Sqft
Total Yard 1563 sqft
Total 1st floor office 2102 Sqft
Total 2nd floor office 2086 Sqft
Total Sqft 16880



Contact: Chris Dechert
360-737-1900
chris@monolithdevelopment.com

MONOLITH
development

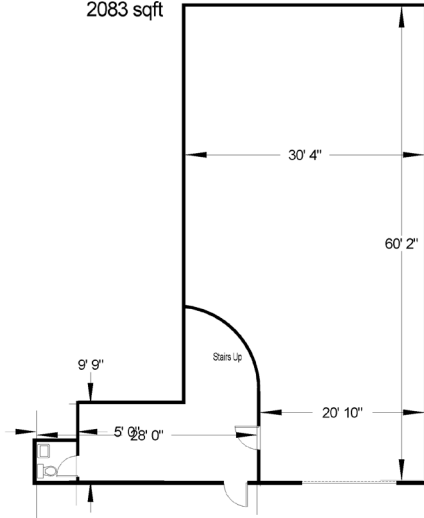
SE 21st Ave

3737-3741-3743

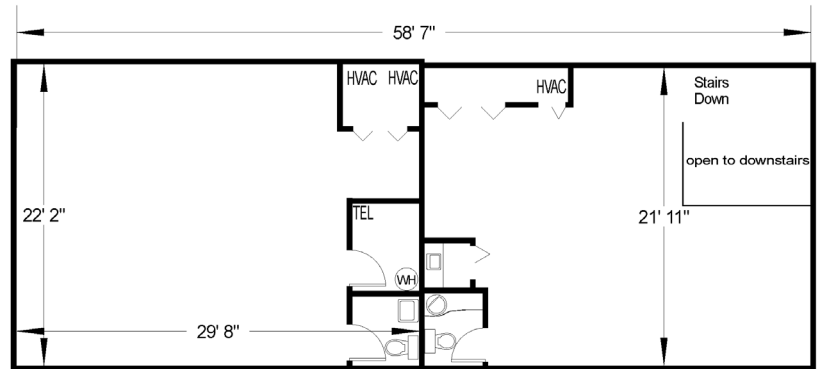
PORTLAND, OREGON

FOR SALE OR
LEASE
\$12.00/SQ/YR
NNN

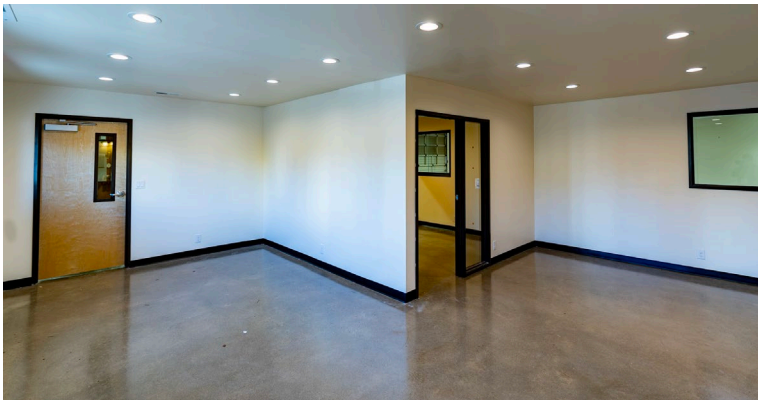
3741 SE 21st Ave.
Portland, OR 97202
2083 sqft



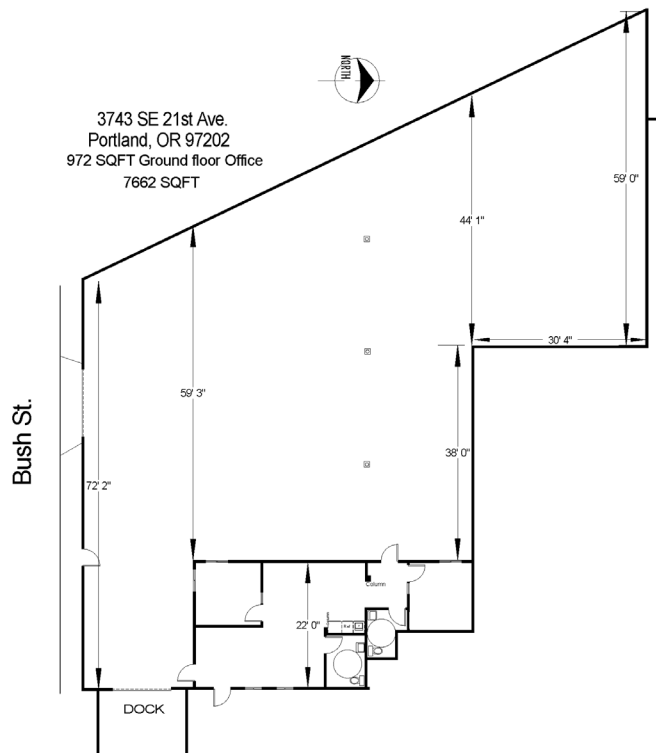
3741 SE 21st Ave.
Portland, OR 97202
Upstairs Office 1268 sqft



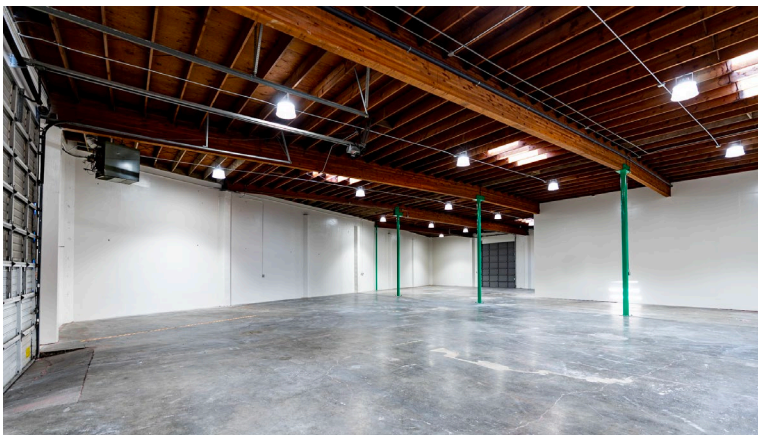
The information contained herein was obtained either from the Owner or other parties we consider reliable. We have no reason to doubt its accuracy, however we do not guarantee it.



3743 SE 21st Ave.
Portland, OR 97202
972 SQFT Ground floor Office
7662 SQFT



The information contained herein was obtained either from the Owner or other parties we consider reliable. We have no reason to doubt its accuracy, however we do not guarantee it.



MONOLITH
development