

**FOR LEASE**

1855 E JONES AVE | 1919 E JONES AVE | 4000 S 20TH ST | PHOENIX, AZ

**MOVE-IN READY 2/1/26**

# JONES 18

## COMMERCE PARK



### 3 BUILDING PROJECT

## 46,530 SF, 69,480 SF & 14,290 SF

- AGGRESSIVE GROSS RENTAL RATES
- 100% AIR CONDITIONED
- MOVE-IN READY SPEC OFFICES

**STEVE MARDIAN**  
+1 602 224 4460  
steve.mardian@cushwake.com

**GARY ANDERSON**  
+1 602 224 4439  
gary.anderson@cushwake.com

**NIK VALLENS**  
+1 602 586 5929  
nik.val lens@cushwake.com



Developed by:



# JONES 18

## COMMERCE PARK

### FOR LEASE

1855 E JONES AVE | 1919 E JONES AVE | 4000 S 20TH ST | PHOENIX, AZ

#### BUILDING 1 1855 E JONES AVE

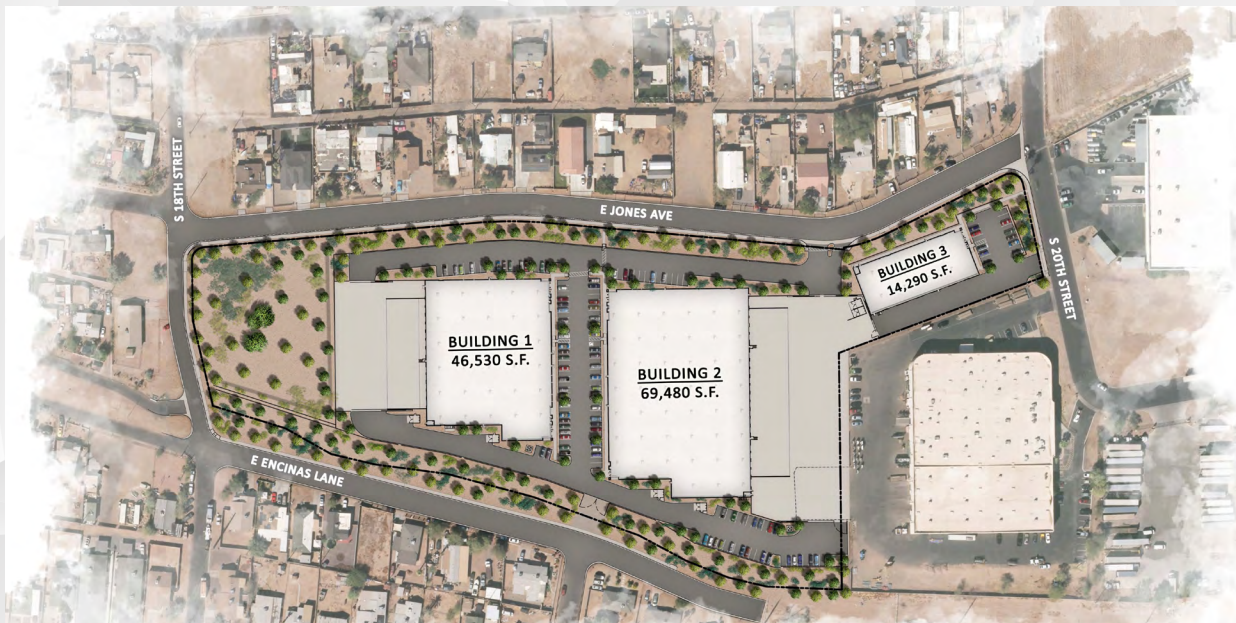
Total SF	46,330 SF
Divisible SF	26,258 SF
Office	±1,000 (expandable)
Dock High Doors	6
Ramp to Grade	1 x 12' x 14'
Sprinklers	ESFR
Clear Height	24'
Warehouse Cooling	100% HVAC
Column Spacing	47' x 52'
Building Depth	193' 8"
Truck Court Depth	138'
Auto Parking	46 spaces
Power	1,200a 2774/80V 3p
Warehouse Lights:	LED
Insulation:	R38

#### BUILDING 2 1919 E JONES AVE

Total SF	69,480 SF
Divisible SF	TBD
Office	±1,000 (expandable)
Dock High Doors	18
Ramp to Grade	2 x 12' x 14'
Sprinklers	ESFR
Clear Height	24'
Warehouse Cooling	100% HVAC
Column Spacing	48' x 52'
Building Depth	218' 8"
Truck Court Depth	140'
Auto Parking	42 spaces
Power	1,200a 277/480V 3p
Warehouse Lights:	LED
Insulation:	R38

#### BUILDING 3 4000 S 20TH ST

Total SF	14,290 SF
Divisible SF	14,290 SF
Office	±1,000 (expandable)
Dock High Doors	Scissor Lift
Ramp to Grade	5 x 12' x 14'
Sprinklers	ESFR
Clear Height	15'
Warehouse Cooling	100% HVAC
Column Spacing	39' x 48'
Building Depth	178' 8"
Truck Court Depth	NA
Auto Parking	17 spaces
Power	1,200a 277/480V 3p
Warehouse Lights:	LED
Insulation:	R38



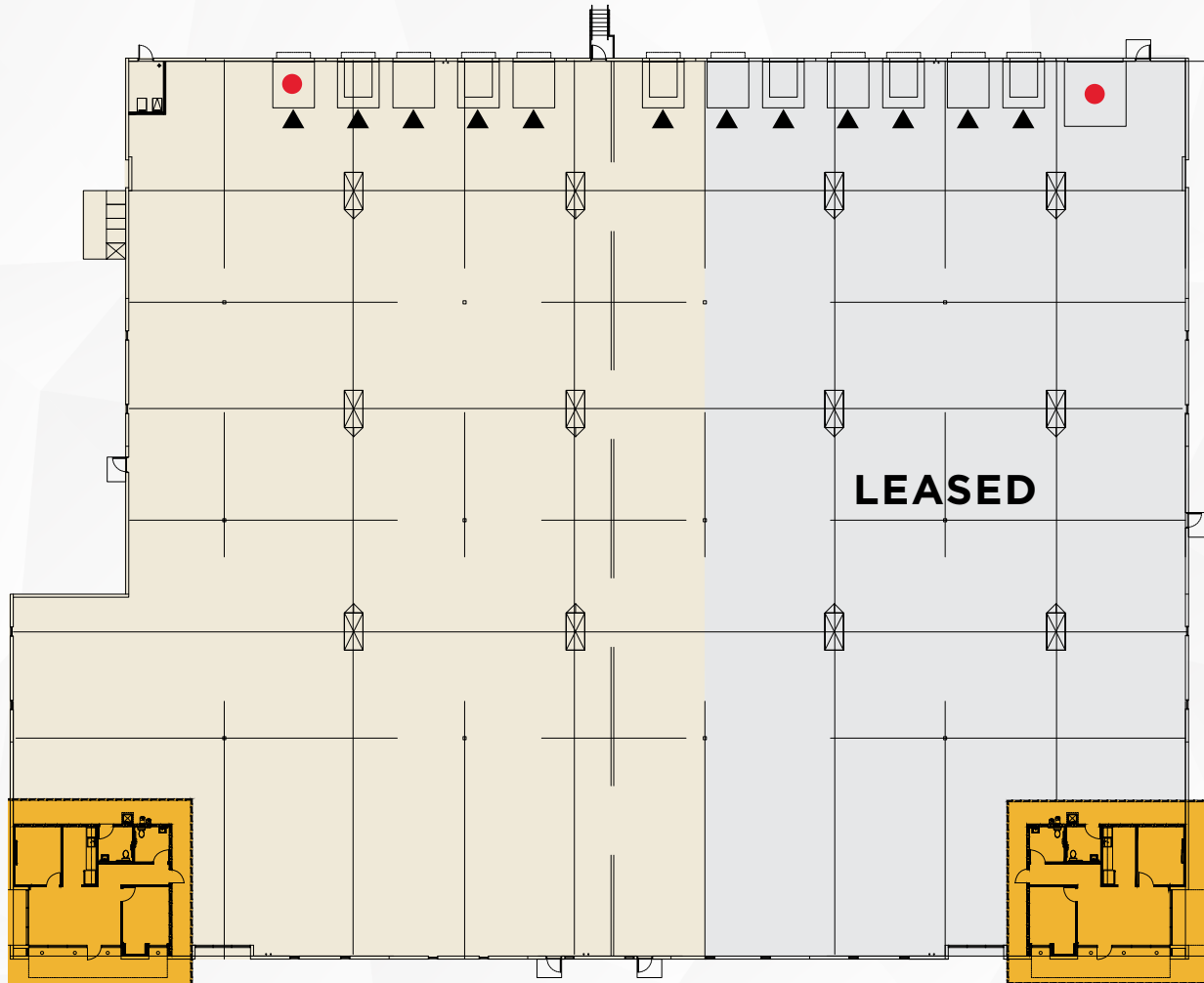
# JONES 18

COMMERCE PARK

FOR LEASE

1855 E JONES AVE | 1919 E JONES AVE | 4000 S 20TH ST | PHOENIX, AZ

## BUILDING 1



● Ramp to Grade (12' x 14')

▲ Dock-High Door

■ Spec Office

**TOTAL BUILDING SF**  
46,330 SF

**AVAILABLE SF**  
26,258 SF

**SPEC OFFICE SIZE**  
±1,000 (Expandable)

**WAREHOUSE COOLING**  
100% HVAC

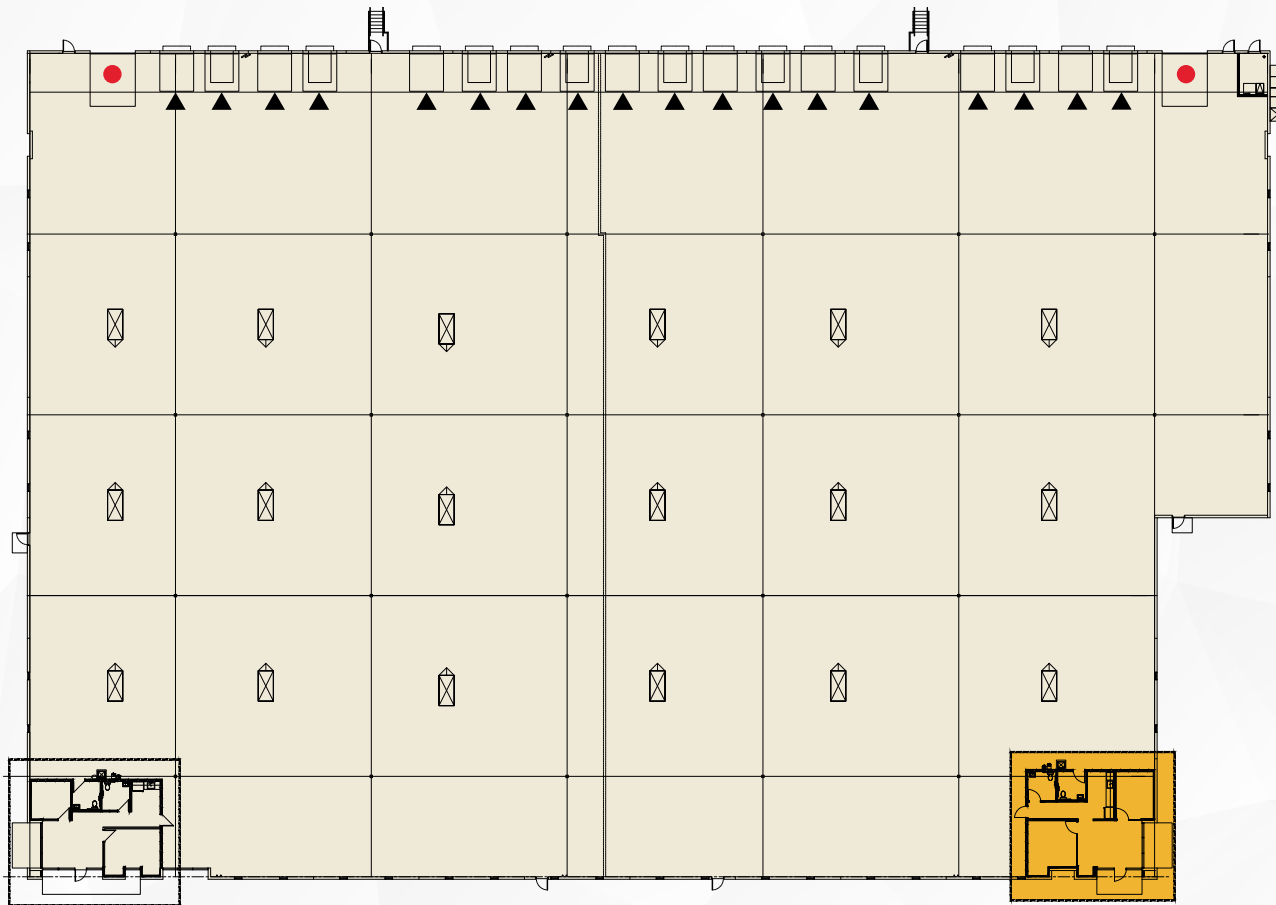
# JONES 18




COMMERCE PARK

FOR LEASE

1855 E JONES AVE | 1919 E JONES AVE | 4000 S 20TH ST | PHOENIX, AZ

## BUILDING 2



-  Ramp to Grade (12' x 14')
-  Dock-High Door
-  Spec Office

**TOTAL SF**  
69,480 SF

**DIVISIBLE SF**  
-

**SPEC OFFICE SIZE**  
±1000 (Expandable)

**WAREHOUSE COOLING**  
100% HVAC

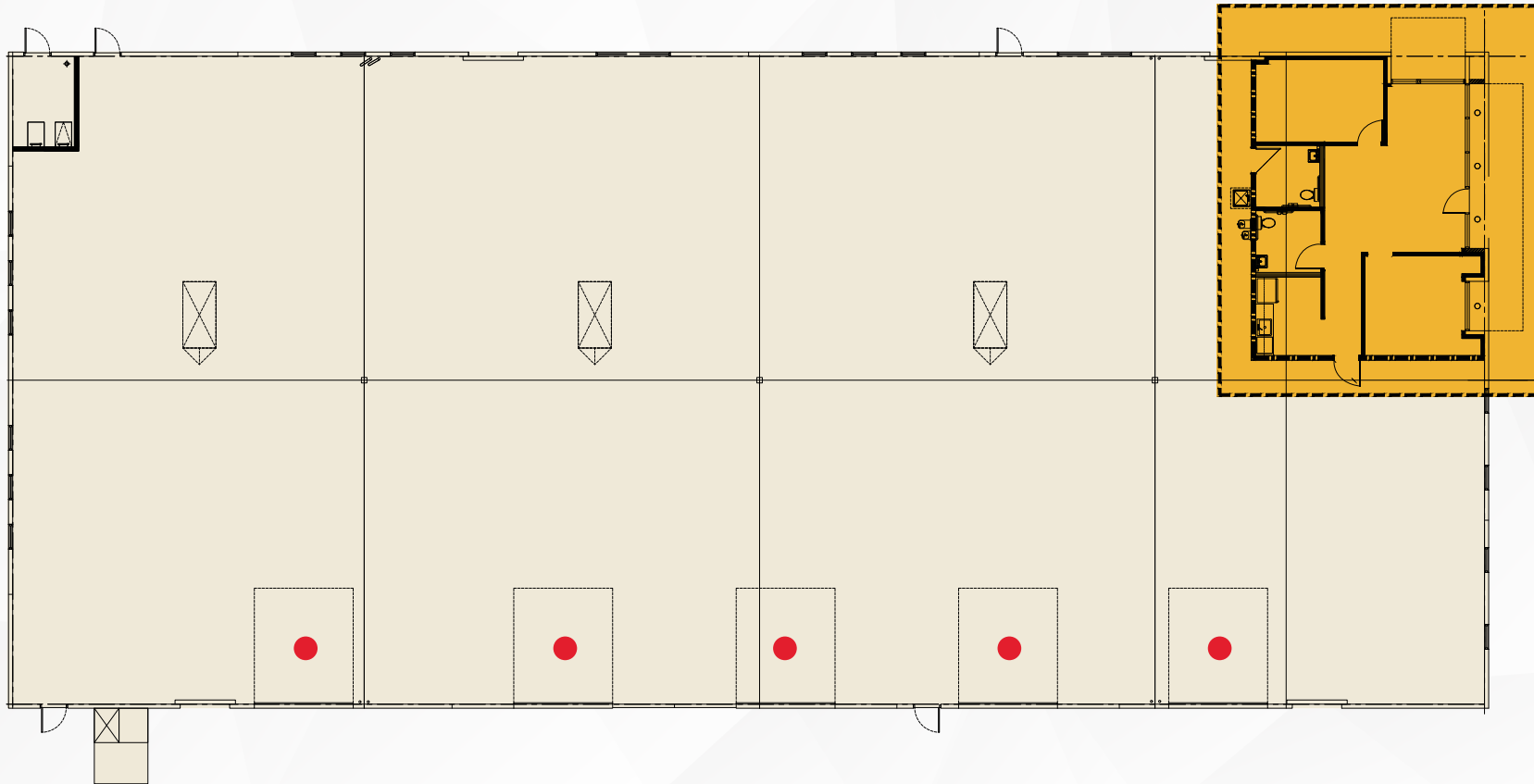
# JONES 18

COMMERCE PARK

**FOR LEASE**

1855 E JONES AVE | 1919 E JONES AVE | 4000 S 20TH ST | PHOENIX, AZ

## BUILDING 3



**TOTAL SF**  
14,290 SF

**DIVISIBLE SF**  
14,290 SF

**SPEC OFFICE SIZE**  
±1000 (Expandable)

**WAREHOUSE COOLING**  
100% HVAC

 Ramp to Grade (12' x 14')

 Dock-High Door

 Spec Office

# JONES 18

## COMMERCE PARK

## LOCATION ACCESS

### FREEWAY PROXIMITIES

- 7.3 Miles to I-10 Interchange
- 16.8 Miles to Loop 101 Interchange
- 9.7 Miles to Loop 202 Freeway

### LOCAL PROXIMITIES

- 26 Minutes to Goodyear Airport
- 6 Minutes to Central Phoenix Business District (Downtown)
- 9 Minutes to Sky Harbor
- 27 Minutes to Deer Valley Airport
- 32 Minutes to TSMC
- 38 Minutes to Mesa Gateway Airport



# JONES 18

## COMMERCE PARK

**3 BUILDING PROJECT**  
**46,530 SF, 69,480 SF & 14,290 SF**



**STEVE MARDIAN**  
+1 602 224 4460  
[steve.mardian@cushwake.com](mailto:steve.mardian@cushwake.com)

**GARY ANDERSON**  
+1 602 224 4439  
[gary.anderson@cushwake.com](mailto:gary.anderson@cushwake.com)

**NIK VALLENS**  
+1 602 586 5929  
[nik.vallens@cushwake.com](mailto:nik.vallens@cushwake.com)