

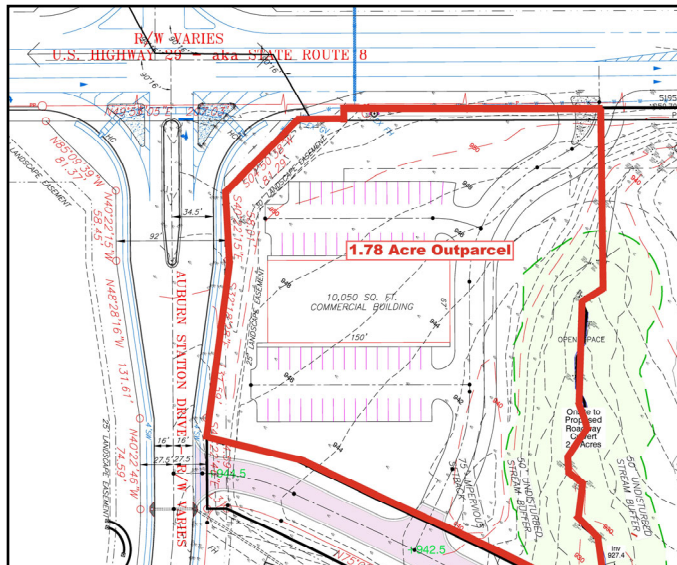


FOR SALE

1.78 ACRES

\$890,000

U.S. Hwy. 29 @ Auburn Station Dr., Auburn, GA 30011
Barrow County



Property Information

- 1.78 Acres For Sale
- Zoned PSV
- Level Building Lot
- All Utilities to Site
- Shared Off-Site Detention
- Located at the Main Entrance of Auburn Station Subdivision (370 Homes & 160 Townhomes)
- Auburn City Limits
- T/C: U.S. Hwy. 29 - 11,900 VPD
- Great location for office, medical, restaurant or small retail use.

Area Retailers

- Ingles, McDonald's, Waffle House, CVS Pharmacy, Anytime Fitness, O'Reilly Auto Parts

For Information Call:
PHILIP HOLLIER
770-814-0061

philip@nygaardproperties.com
www.nygaardproperties.com