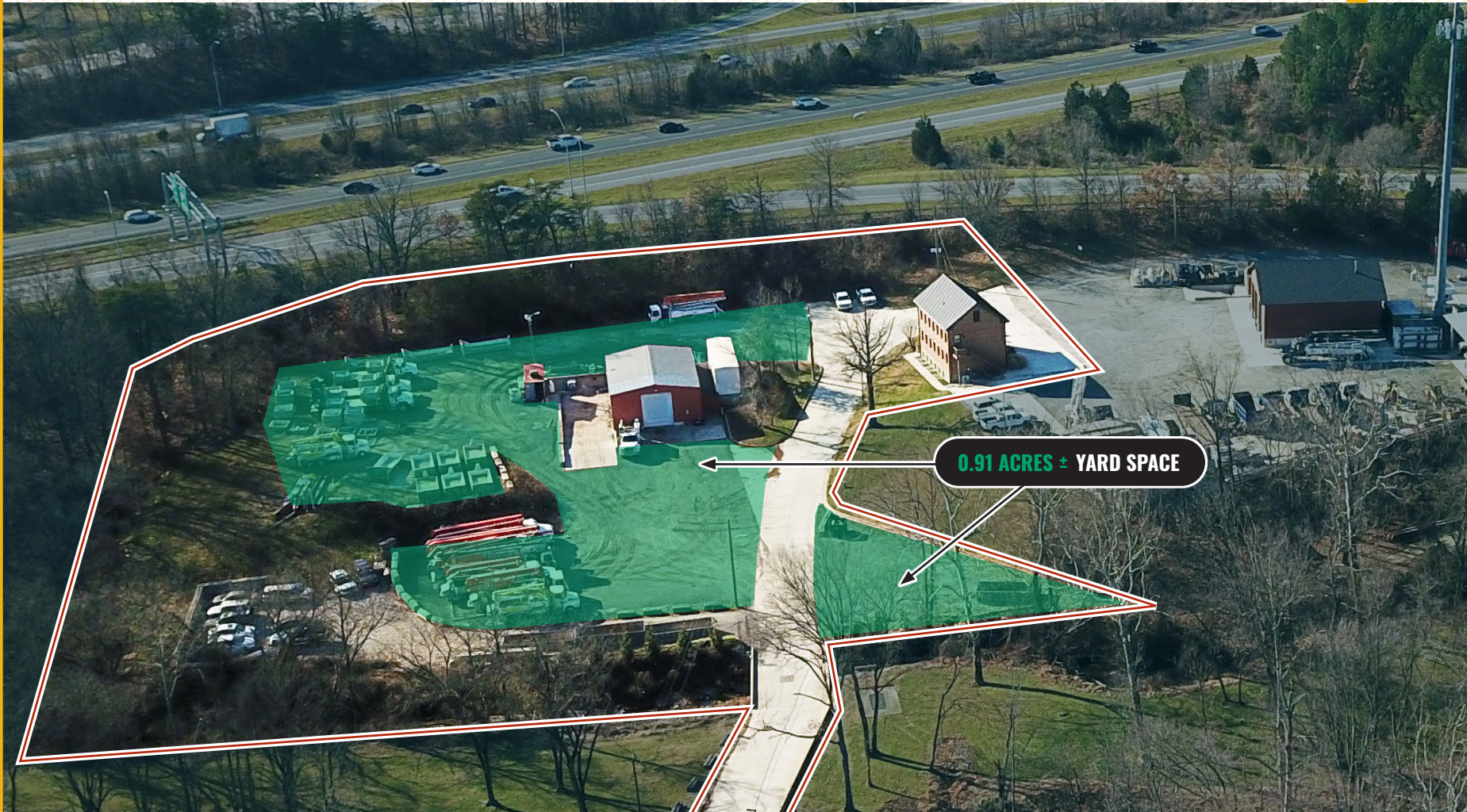




FOR **LEASE**

SERVICE WAREHOUSE WITH YARD SPACE

10480 GUILFORD ROAD | JESSUP, MARYLAND 20794



MACKENZIE

COMMERCIAL REAL ESTATE SERVICES, LLC

PROPERTY OVERVIEW

HIGHLIGHTS:

- 1,800 SF \pm Warehouse Building
- 3,000 SF \pm Office Building (3 Stories)
- 0.91 acres \pm of yard space
- 400 SF \pm trailer
- Easy access to Route 32, Route 1, I-95, I-295
- Close proximity to BWI Airport and the Port of Baltimore

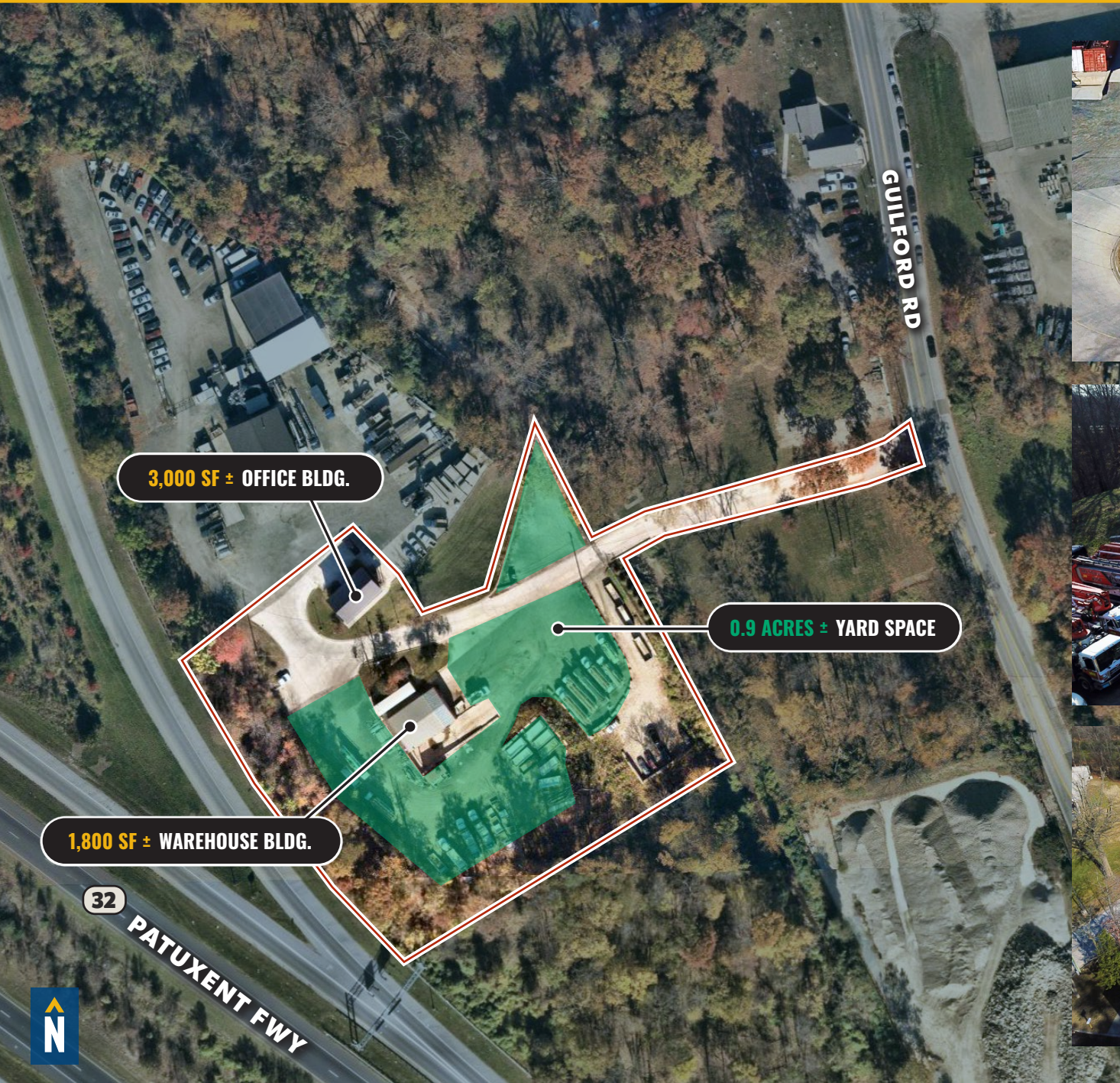


WAREHOUSE:	1,800 SF \pm
OFFICE:	3,000 SF \pm (3 STORIES)
YARD SPACE:	0.91 ACRES \pm
DRIVE-INS:	1
ZONING:	M-2 (MANUFACTURING: HEAVY DIST.)
RENTAL RATE:	NEGOTIABLE



GOOGLE MAPS

AERIAL



LOCAL BIRDSEYE



TRADE AREA

DRIVING DISTANCE TO:

1 0.6 MILES
3 MIN. DRIVE

32 1.1 MILES
4 MIN. DRIVE

95 2.5 MILES
5 MIN. DRIVE

BWI
BALTIMORE WASHINGTON
INTERNATIONAL
AIRPORT
11.6 MILES
13 MIN. DRIVE

PORT OF BALTIMORE
18.7 MILES
18 MIN. DRIVE
(FAIRFIELD
MARINE TERMINAL)

BALTIMORE, MD 19.8 MILES
25 MIN.

WASHINGTON, DC 24.9 MILES
40 MIN.

PHILADELPHIA, PA 121.0 MILES
2 HRS. 5 MIN.

RICHMOND, VA 139.0 MILES
2 HRS. 10 MIN.



FOR MORE INFO CONTACT:

**ANDREW MEEDER, SIOR**

SENIOR VICE PRESIDENT & PRINCIPAL

410.494.4881

AMEEDER@mackenziecommercial.com

**MATTHEW CURRAN, SIOR**

SENIOR VICE PRESIDENT & PRINCIPAL

443.573.3203

MCURRAN@mackenziecommercial.com

**DANIEL HUDAK, SIOR**

SENIOR VICE PRESIDENT & PRINCIPAL

443.573.3205

DHUDAK@mackenziecommercial.com

**ALTON CURRY**

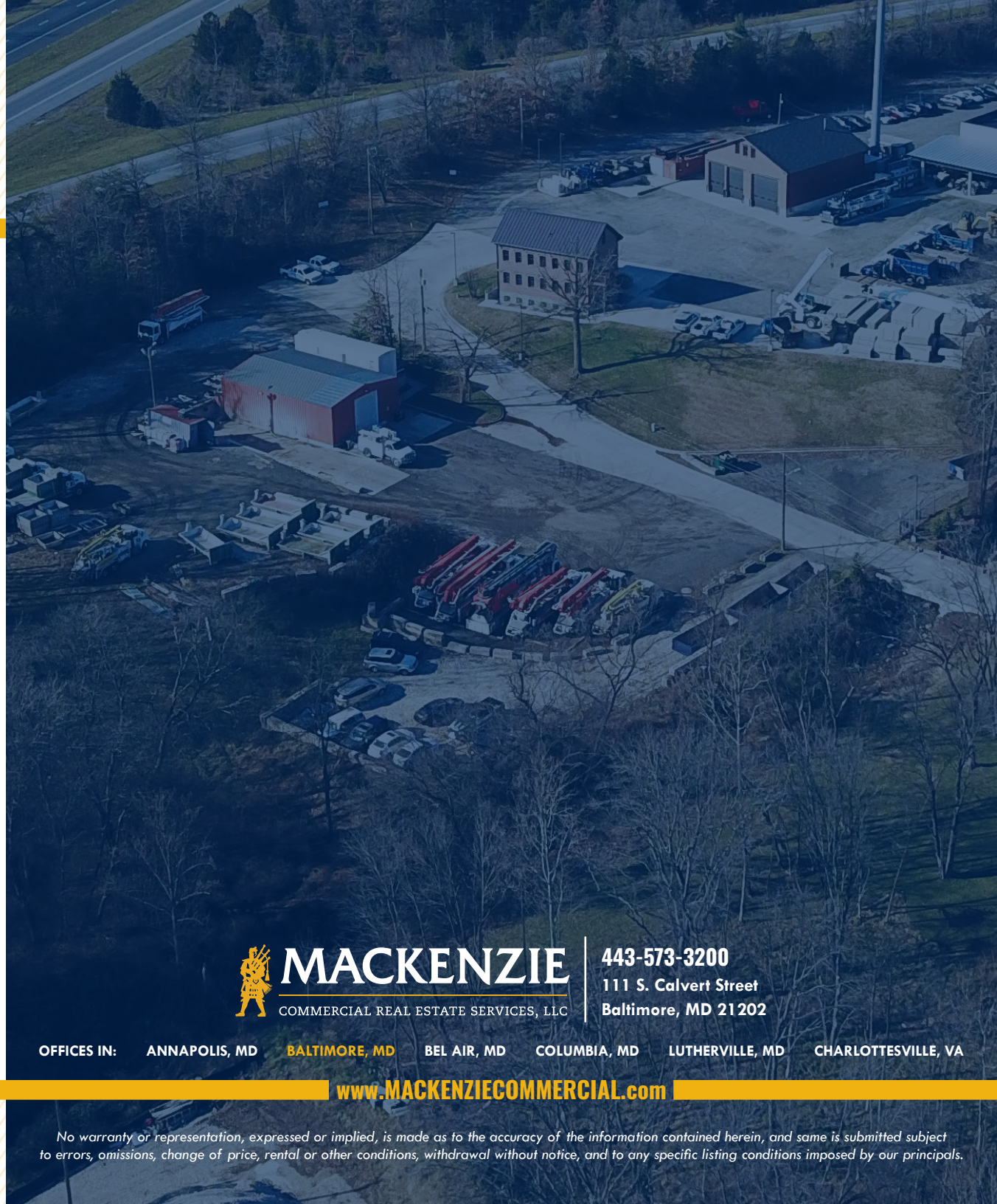
REAL ESTATE ADVISOR

443.841.9780

ACURRY@mackenziecommercial.com



VISIT **PROPERTY PAGE** FOR MORE INFORMATION.



MACKENZIE

COMMERCIAL REAL ESTATE SERVICES, LLC

443-573-3200

111 S. Calvert Street
Baltimore, MD 21202

OFFICES IN: ANNAPOLIS, MD **BALTIMORE, MD** BEL AIR, MD COLUMBIA, MD LUTHERVILLE, MD CHARLOTTESVILLE, VA

www.MACKENZIECOMMERCIAL.com

No warranty or representation, expressed or implied, is made as to the accuracy of the information contained herein, and same is submitted subject to errors, omissions, change of price, rental or other conditions, withdrawal without notice, and to any specific listing conditions imposed by our principals.