

415 E. MAPLE ROAD
TROY, MICHIGAN

MEDICAL FOR SALE
6,515 Square Feet Available



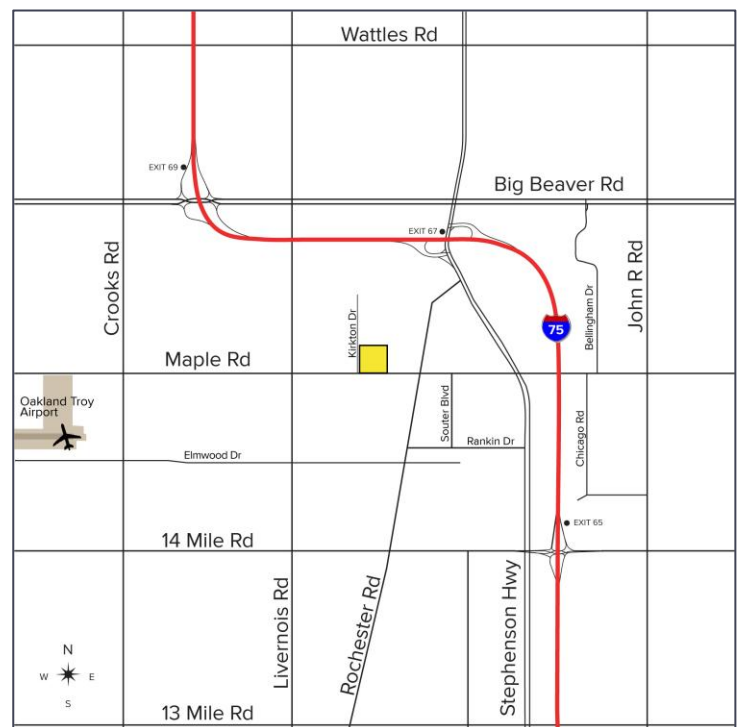
**SIGNATURE
ASSOCIATES**
KNOW SIGNATURE | KNOW RESULTS

FULLY LEASED MEDICAL BUILDING



PROPERTY FEATURES

- 6,515 square feet available
- Investment opportunity or possible owner/user
- Building in pristine condition with excellent visibility
- One long-term tenant, suite 200 can be made available, or they will sign for up to an additional 3 years if purchaser desires
- Very clean basement space for storage in addition to building square footage
- 56 on-site parking spaces
- Sale Price: \$1,850,000 (\$283.96/sq. ft.)



For more information, please contact:

JEFFREY TREPECK
(248) 359 0626

jtrepeck@signatureassociates.com

PETER VANDERKAAY
(248) 359 3837

pvanderkaay@signatureassociates.com

SIGNATURE ASSOCIATES
One Towne Square, Suite 1200
Southfield, MI 48076
www.signatureassociates.com

Information is subject to verification and no liability for errors or omissions is assumed. Price is subject to change and listing withdrawal.

415 E. Maple Road – Troy, Michigan

Medical For Sale

6,515
Square Feet
AVAILABLE

Aerial



For more information, please contact:

JEFFREY TREPECK

(248) 359 0626

jtrepeck@signatureassociates.com

PETER VANDERKAAY

(248) 359 3837

pvanderkaay@signatureassociates.com

SIGNATURE ASSOCIATES

One Towne Square, Suite 1200

Southfield, MI 48076

www.signatureassociates.com

Information is subject to verification and no liability for errors or omissions is assumed. Price is subject to change and listing withdrawal.