

The Colliers logo, featuring the word "Colliers" in white serif font on a blue rectangular background with a yellow and red horizontal stripe at the bottom.

Colliers

A photograph of a garden center with a green metal roof and various colorful metal sculptures of flowers and cacti. A blue banner is overlaid on the left side of the image.

For Lease

Clark Building
2820 Cerrillos Rd
Santa Fe, NM 87507

Jyl DeHaven, MS

Vice President, Northern New Mexico
+1 817 360 0285
jyl.dehaven@colliers.com
Lic. No. 2022-0940

Colliers | New Mexico - El Paso
5051 Journal Center Blvd. NE, Suite 200
Albuquerque, NM 87109
Main: +1 505 883 7676
colliers.com

Property Profile

Details

Lease Rate	\$14.00 PSF
Lease Type	NNN (\$3.96 PSF)
Available Space	± 6,636 SF
Ground Floor	± 5,412 SF
Mezzanine	± 1,224 SF
Year Built	1995
Parking Ratio	3.6 (100 Spaces)
Zoning	C2

Features

- Includes access and use of ± 1,392 SF covered patio and courtyard
- Located within the well-known Mercado at Jackalope Santa Fe and part of a vibrant retail environment.
- The property offers excellent traffic counts in excess of 44,700 VPD, with multiple access points to the property
- High ceilings of 14'-16' and a roll-up dock door can accommodate a variety of uses.
- The flexible layout is well-suited for either retail operations or light warehousing needs.
- Includes a large courtyard and covered patio space, and an indoor mezzanine
- Located in the heart of Santa Fe, which attracts over 2 million overnight visitors every year



2820 Cerrillos Rd | For Lease

Trade Area Aerial

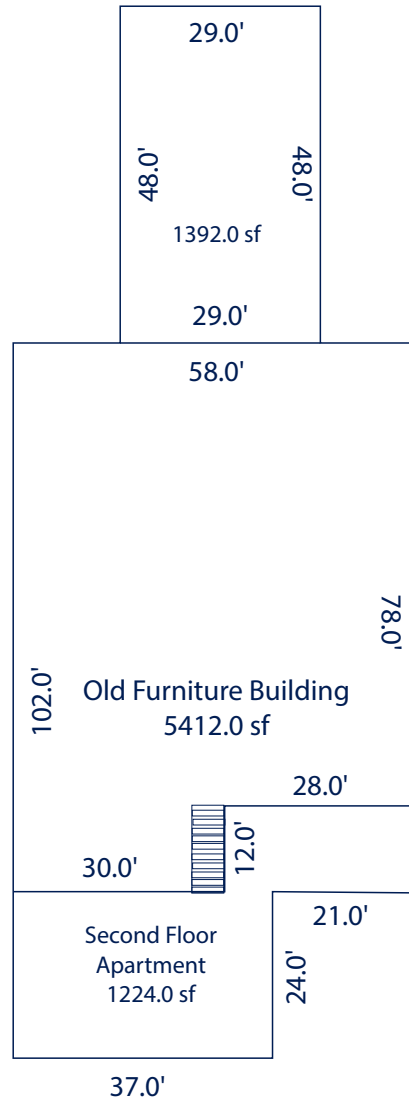


2820 Cerrillos Rd | For Lease

Intersection Aerial

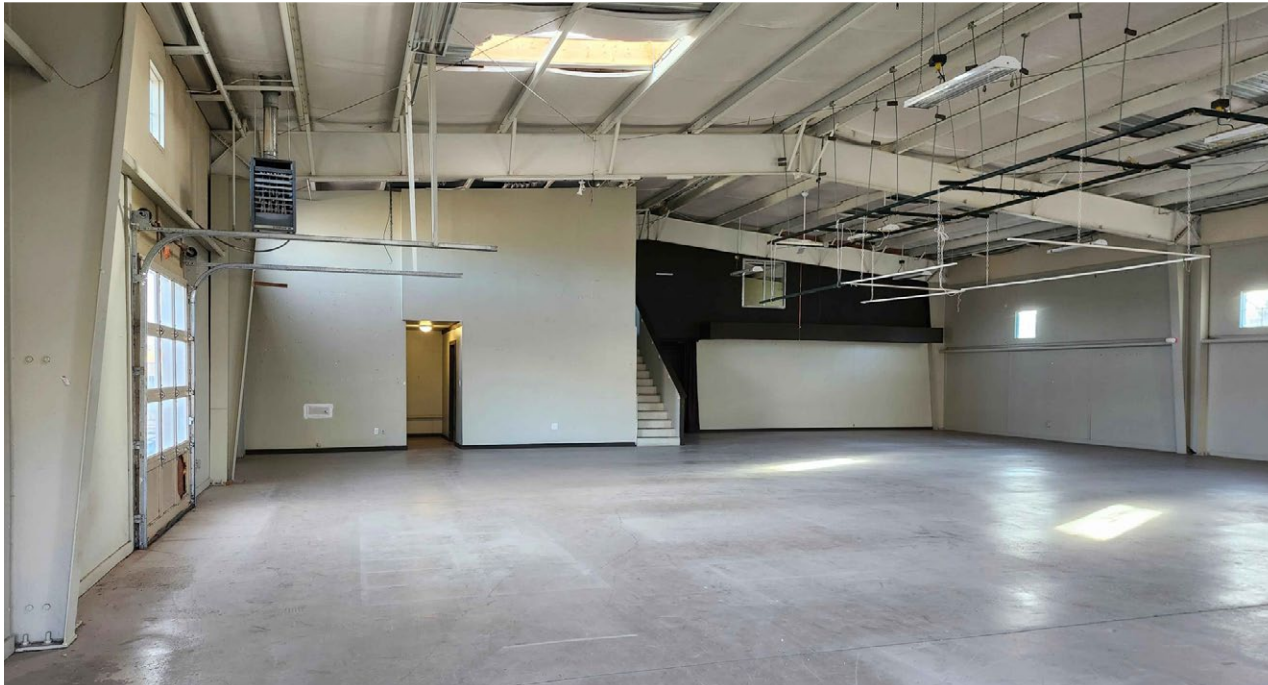
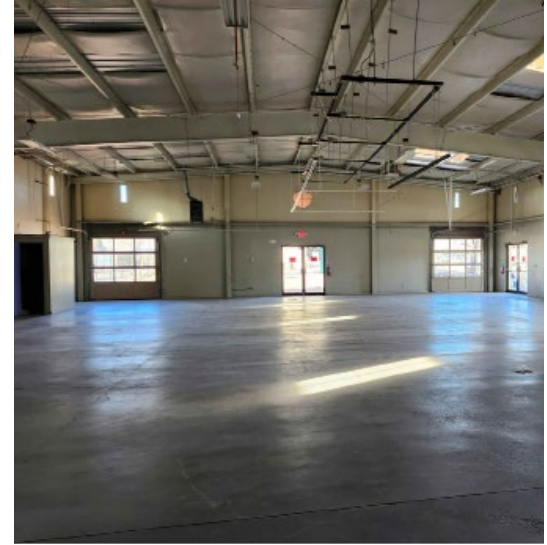


Floor Plan



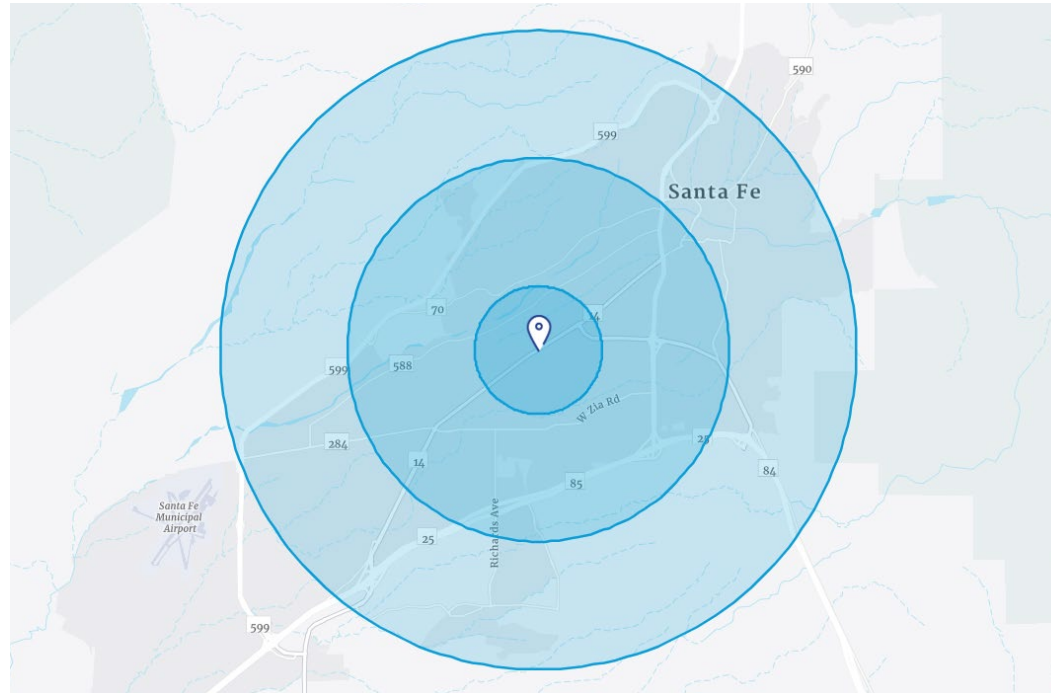
2820 Cerrillos Rd | For Lease

Property Gallery



Demographics*

* Demographic data derived from esri® 2020



	1 Mile	3 Miles	5 Miles
Population	10,538	62,830	101,200
Households	4,838	29,502	46,598
Median HH Income	\$58,021	\$73,241	\$78,288
Average HH Income	\$77,445	\$101,629	\$116,679