

# Plum Tree Shops

5814 Winchester Rd. • Memphis, Tennessee



High-visibility Winchester Road location with ample parking. Over 75,000 households within a 5-mile radius. Current tenants include Nail Club, Platinum Kutz, Express Loans, Dr. Willis B. Davis, DDS, and ACE Cash Express.

## BUILDING AMENITIES

- 1,300 SF Available
- Nearly 25,000 VPD (vehicles per day)
- Professionally managed
- Ample parking
- Excellent visibility



2024 Summary	1 mile	3 miles	5 miles
Population	13,905	98,898	205,920
Households	4,857	35,934	77,842
Average Household Income	\$50,710	\$63,925	\$83,953
Median Household Income	\$36,385	\$46,145	\$56,291

## FOR INFORMATION CONTACT:

**Dana Jones**  
901.507.3453  
djones@mrgmemphis.com

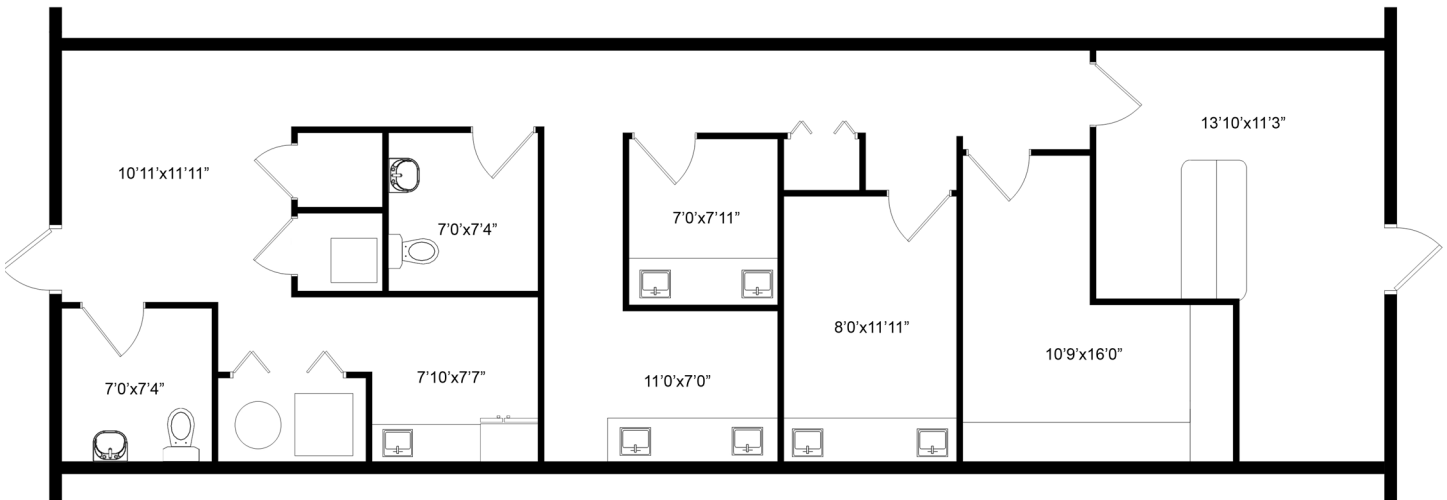
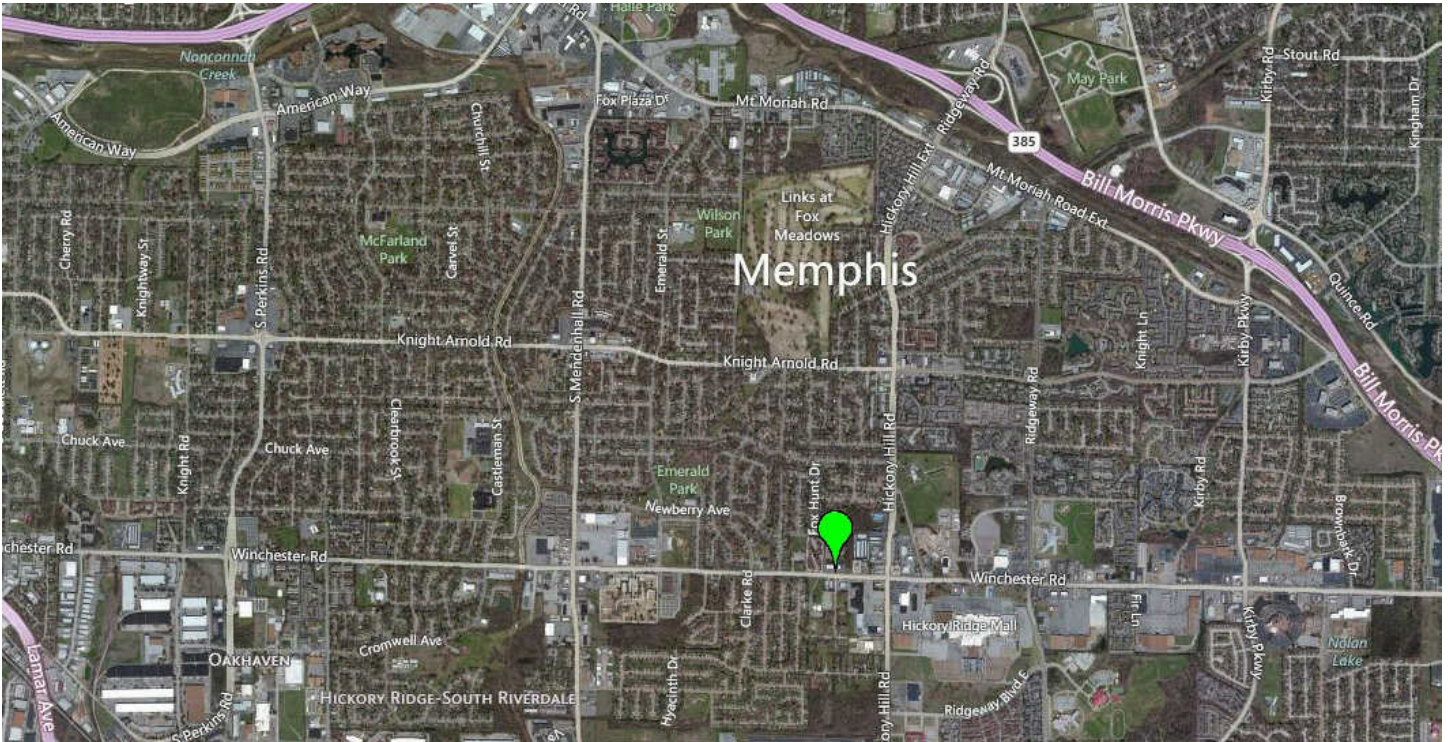
**Michael Greenberg**  
901.507.3429  
mgreenberg@mrgmemphis.com

**Makowsky Ringel Greenberg, LLC**  
1010 June Road, Suite 200  
P.O. Box 241990  
Memphis, TN 38124  
Phone: 901.683.2220  
Fax: 901.507.3440

[www.mrgmemphis.com/commercial](http://www.mrgmemphis.com/commercial)



# Plum Tree Shops



**Makowsky Ringel Greenberg, LLC**  
 1010 June Road, Suite 200  
 P.O. Box 241990  
 Memphis, TN 38124  
 Phone: 901.683.2220  
 Fax: 901.507.3440

