

PARKWAY PROFESSIONAL CENTER

CARSON CITY, NV

FOR LEASE



EXCLUSIVE LISTING AGENTS:

LEAHNA CHAPMAN

SENIOR ASSOCIATE

+1 775 823 6937

LEAHNA.CHAPMAN@CBRE.COM

LIC. S.0183267

DAVID WOODS, CCIM

SENIOR VICE PRESIDENT

+1 775 321 4459

DAVID.WOODS@CBRE.COM

LIC. S.0072655

MATT GRIMES, CCIM

SENIOR VICE PRESIDENT

+1 775 356 6290

MATT.GRIMES@CBRE.COM

LIC. S.0072644

CBRE

Property Overview

PARKWAY PROFESSIONAL CENTER

A premier office space destination offering an exceptional blend of convenience, flexibility, and value. Ideally situated near the freeway bypass to U.S. 395, our location ensures seamless access to the north end of Carson City and is just 30 minutes from Reno-Tahoe International Airport. With competitive rates, flexible floor plans tailored to your needs, and ample parking, Parkway Professional Center is designed to support your business's growth and success. Discover a strategic location that combines accessibility with a professional environment, perfect for businesses looking to thrive.



18,800

Annual Average Daily Traffic for
College Parkway Street



61,364

2024 Daytime Population
within a 5-mile radius



57,281

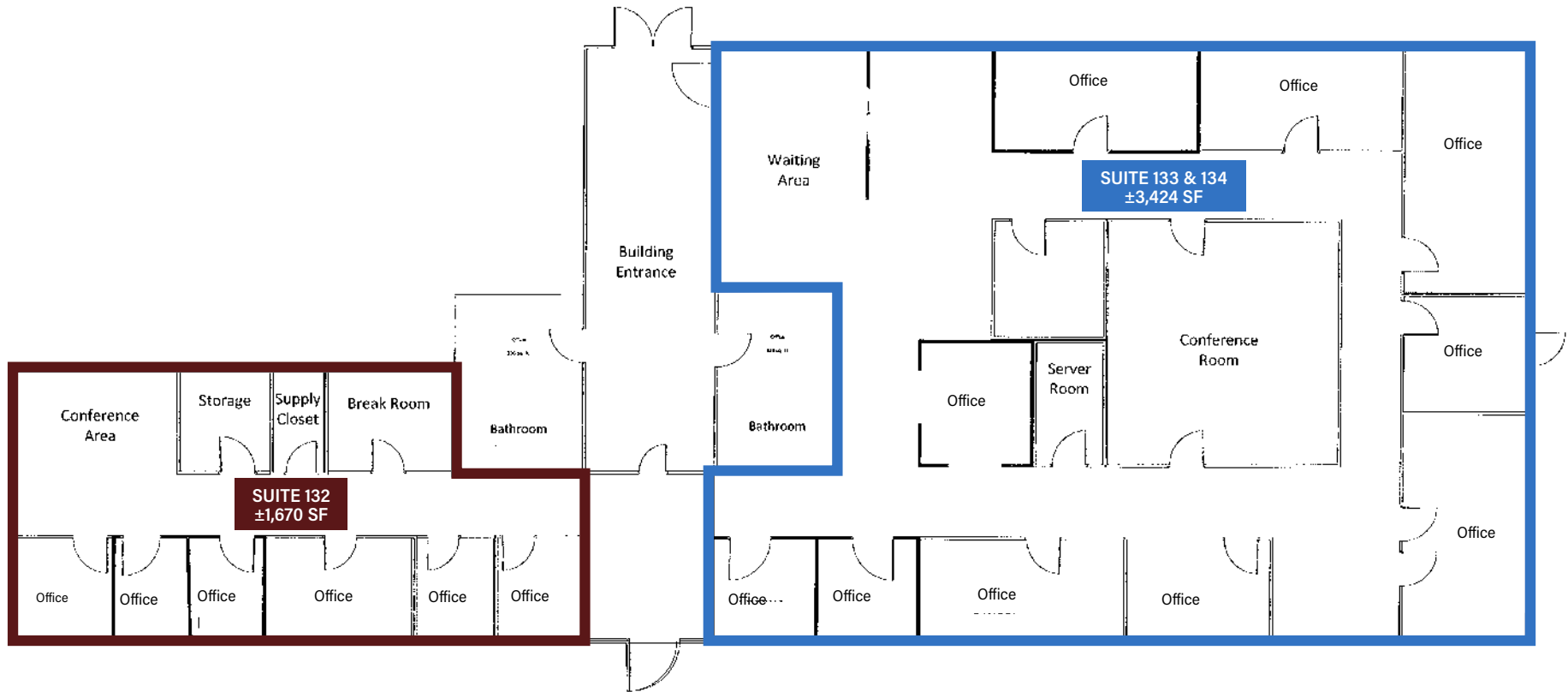
2024 Population within a
5-mile Radius



3416 Goni Road

Floor Plan

\ \$1.50/SF Modified Gross

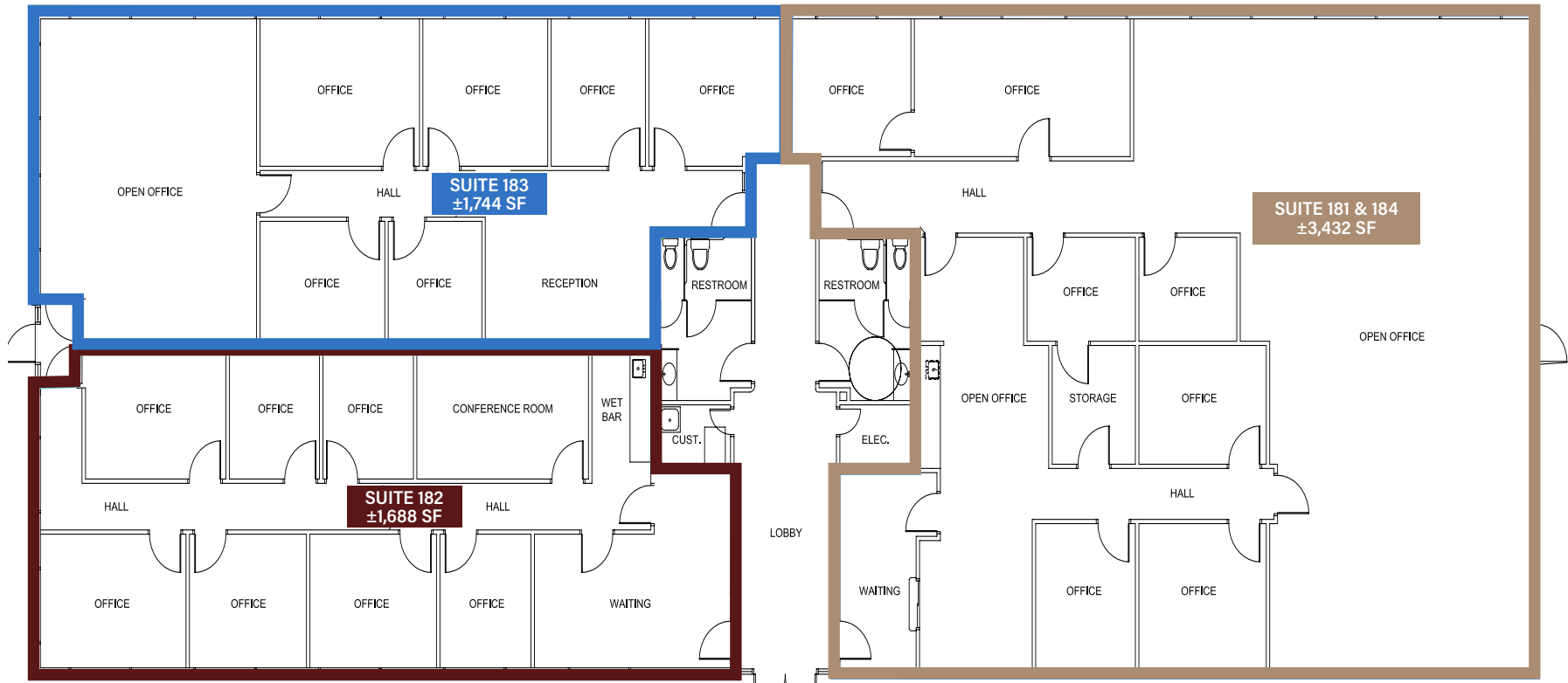


	SUITE	SIZE	PRICE PER SF	COMBINED SUITES	SIZE	PRICE PER SF
●	132	1,670 SF	\$1.50	Suites 132, 133, 134	5,094 SF	\$1.50
●	133 & 134	3,424 SF	\$1.50			

3208 Goni Road

Floor Plan

\ \$1.50/SF Modified Gross

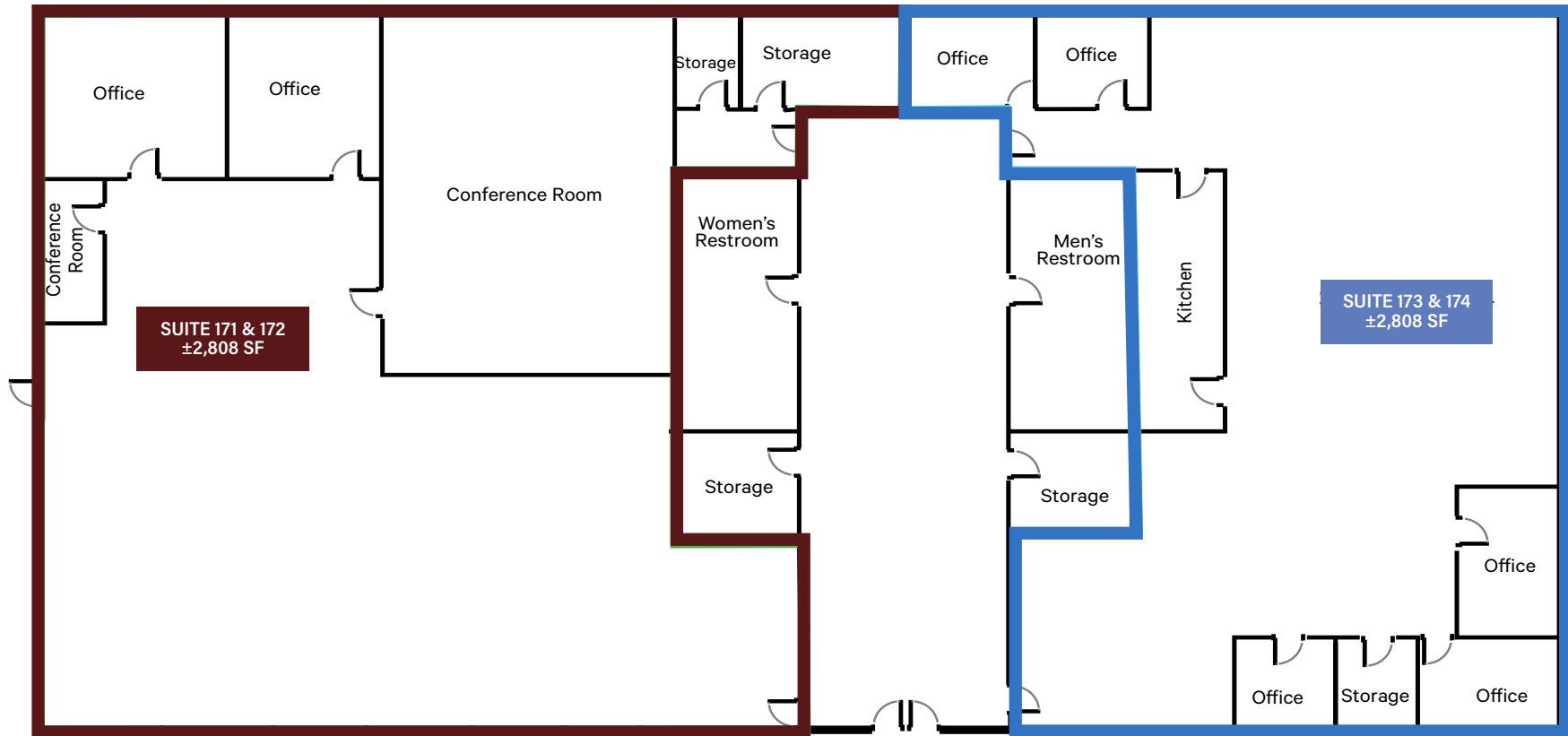


	SUITE	SIZE	PRICE PER SF	COMBINED SUITES	SIZE	PRICE PER SF
●	182	1,688 SF	\$1.50	Suites 181 -184	6,864 SF	\$1.50
●	183	1,744 SF	\$1.50			
●	181 &184	3,432 SF	\$1.50			

3310 Goni Road

Floor Plan

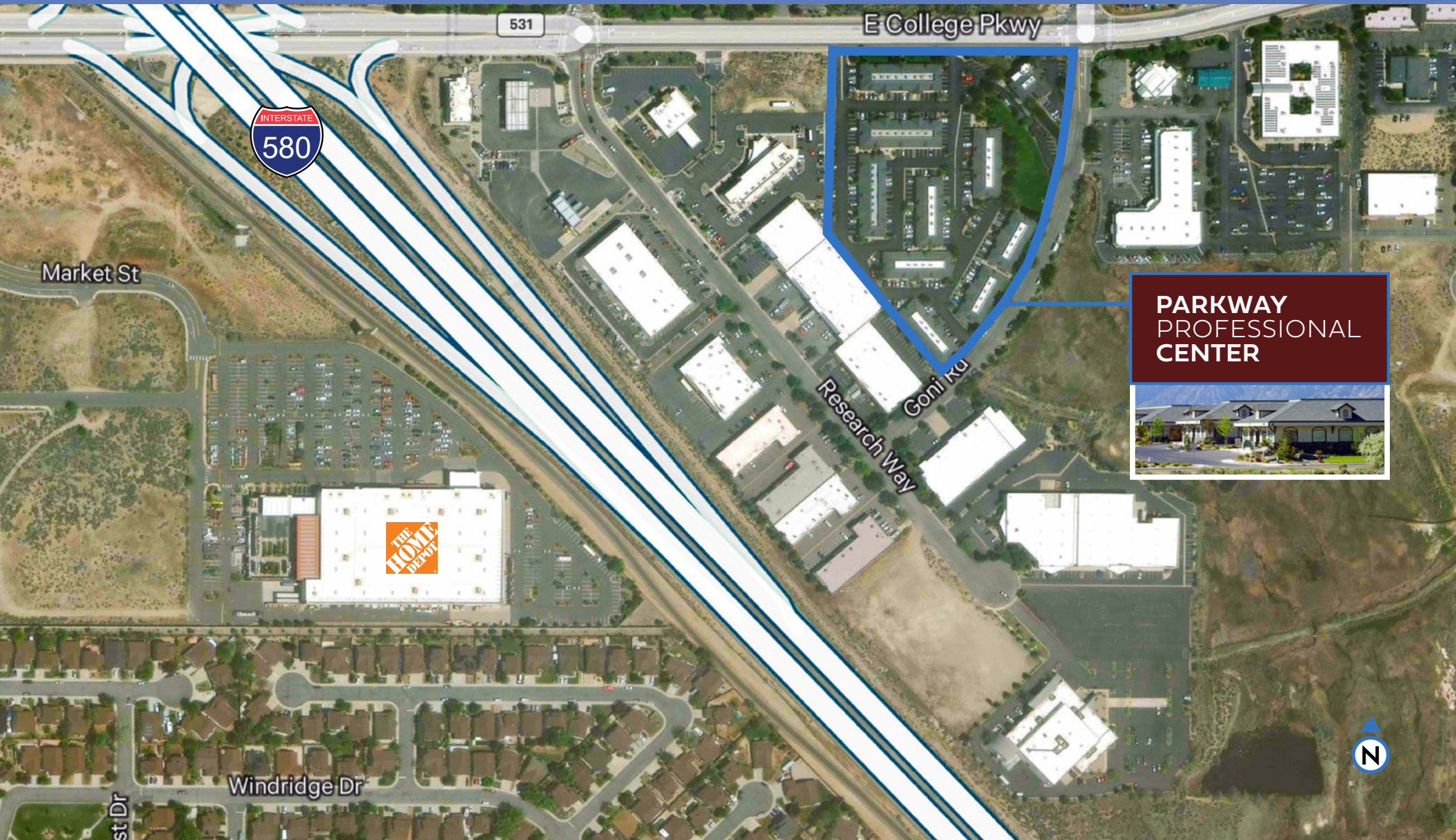
\ \$1.50/SF Modified Gross



	SUITE	SIZE	PRICE PER SF	COMBINED SUITES	SIZE	PRICE PER SF
●	171 & 172	2,808 SF	\$1.50	Suites 171 -174	5,616 SF	\$1.50
●	173 & 174	2,808 SF	\$1.50			

Overview of Location

A premier office space offering an exceptional blend of convenience, flexibility, and value.



**PARKWAY
PROFESSIONAL
CENTER**



PARKWAY PROFESSIONAL CENTER

CARSON CITY, NV

Legend

- ① 3310 GONI RD.
- ② 3208 GONI RD.
- ③ 3332 GONI RD.
- ④ 3264 GONI RD.
- ⑤ 3416 GONI RD.
- ⑥ 3488 GONI RD.
- ⑦ 1789 COLLEGE PKWY.
- ⑧ 1761 COLLEGE PKWY.
- ⑨ 1717 COLLEGE PKWY.
- ⑩ 1793 COLLEGE PKWY.



PARKWAY PROFESSIONAL CENTER

FOR LEASE

CARSON CITY, NV



EXCLUSIVE LISTING AGENTS:

LEAHNA CHAPMAN

SENIOR ASSOCIATE

+1 775 823 6937

LEAHNA.CHAPMAN@CBRE.COM

LIC. S.0183267

DAVID WOODS, CCIM

SENIOR VICE PRESIDENT

+1 775 321 4459

DAVID.WOODS@CBRE.COM

LIC. S.0072655

MATT GRIMES, CCIM

SENIOR VICE PRESIDENT

+1 775 356 6290

MATT.GRIMES@CBRE.COM

LIC. S.0072644

WWW.CBRE.COM/RENO

CBRE

© 2025 CBRE, Inc. All rights reserved. This information has been obtained from sources believed reliable, but has not been verified for accuracy or completeness. You should conduct a careful, independent investigation of the property and verify all information. Any reliance on this information is solely at your own risk. CBRE and the CBRE logo are service marks of CBRE, Inc. All other marks displayed on this document are the property of their respective owners, and the use of such logos does not imply any affiliation with or endorsement of CBRE. Photos herein are the property of their respective owners. Use of these images without the express written consent of the owner is prohibited.PMStudio_July2025