



106TH & MAIN STREET, ZIONSVILLE, IN 46077

JOIN BIGGBY COFFEE!

NEW MULTI-TENANT BUILDING BEING BUILT ON MAIN STREET IN SOUTH VILLAGE OF ZIONSVILLE

- 3,200 SF Available for Lease (divisible)
- Main Street Frontage
- On-Site Parking
- Great retail intersection at 106th & Main Street
- Close proximity to Creekside Business Park, FedEx, Rahal Letterman, etc.

ALSO AVAILABLE:

- 2,000 SF Pad Site - South Village West
- 11,166 SF Retail Space for Lease - Available Jan. 1, 2025
- 4,793 SF Retail Space for Lease - Available Now

FOR LEASE 3,200 - 11,166 SF

FOR SALE 2,000 SF PAD

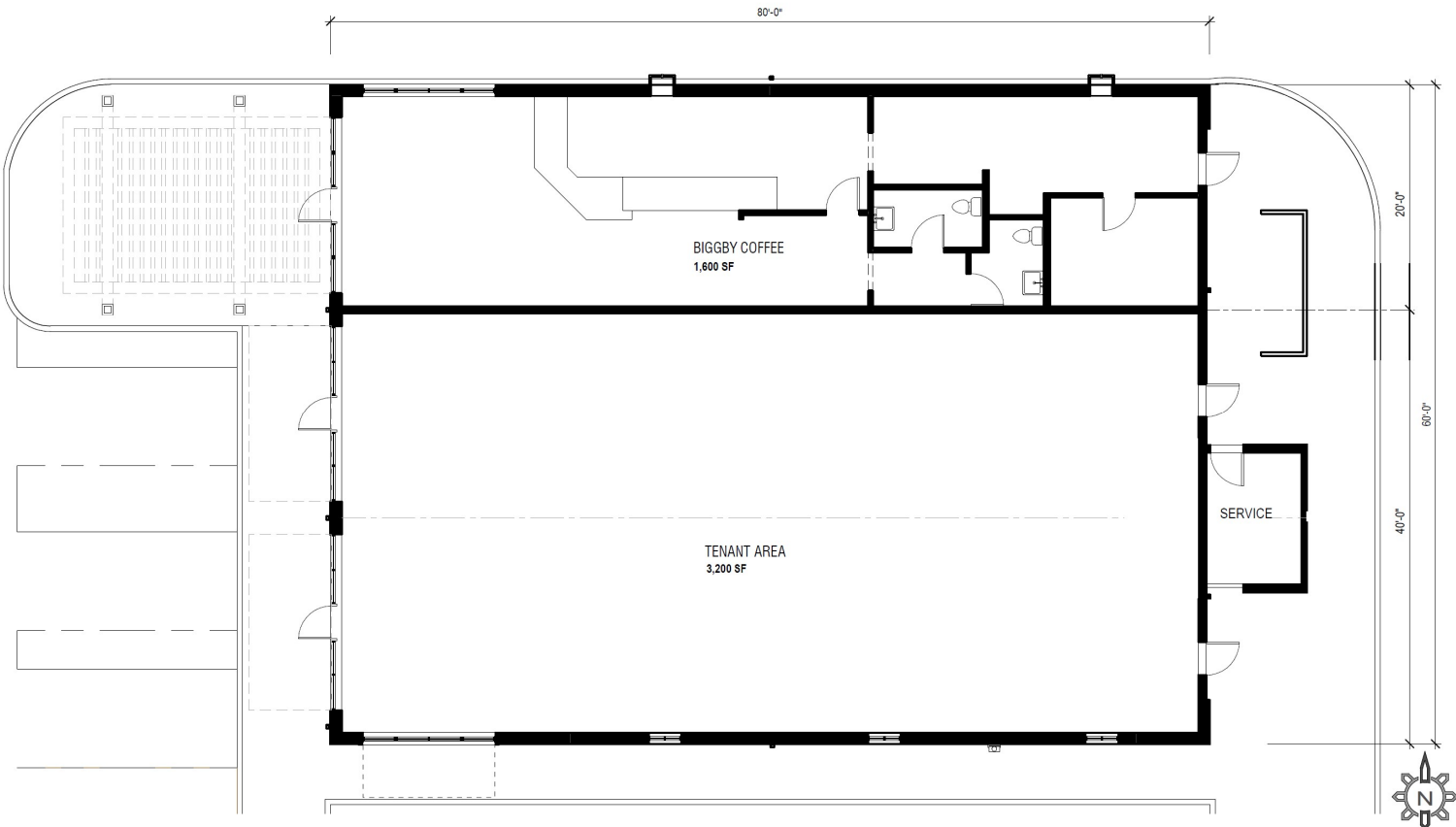




SOUTH VILLAGE OF ZIONSVILLE

SALE/LEASE

RETAIL



BETH PATTERSON, CCIM
Senior Vice President | Principal
317.663.6558
bpatterson@bradleyco.com



SOUTH VILLAGE OF ZIONSVILLE

SALE/LEASE

RETAIL



BETH PATTERSON, CCIM
 Senior Vice President | Principal
 317.663.6558
 bpatterson@bradleyco.com



SOUTH VILLAGE OF ZIONSVILLE

SALE/LEASE

RETAIL



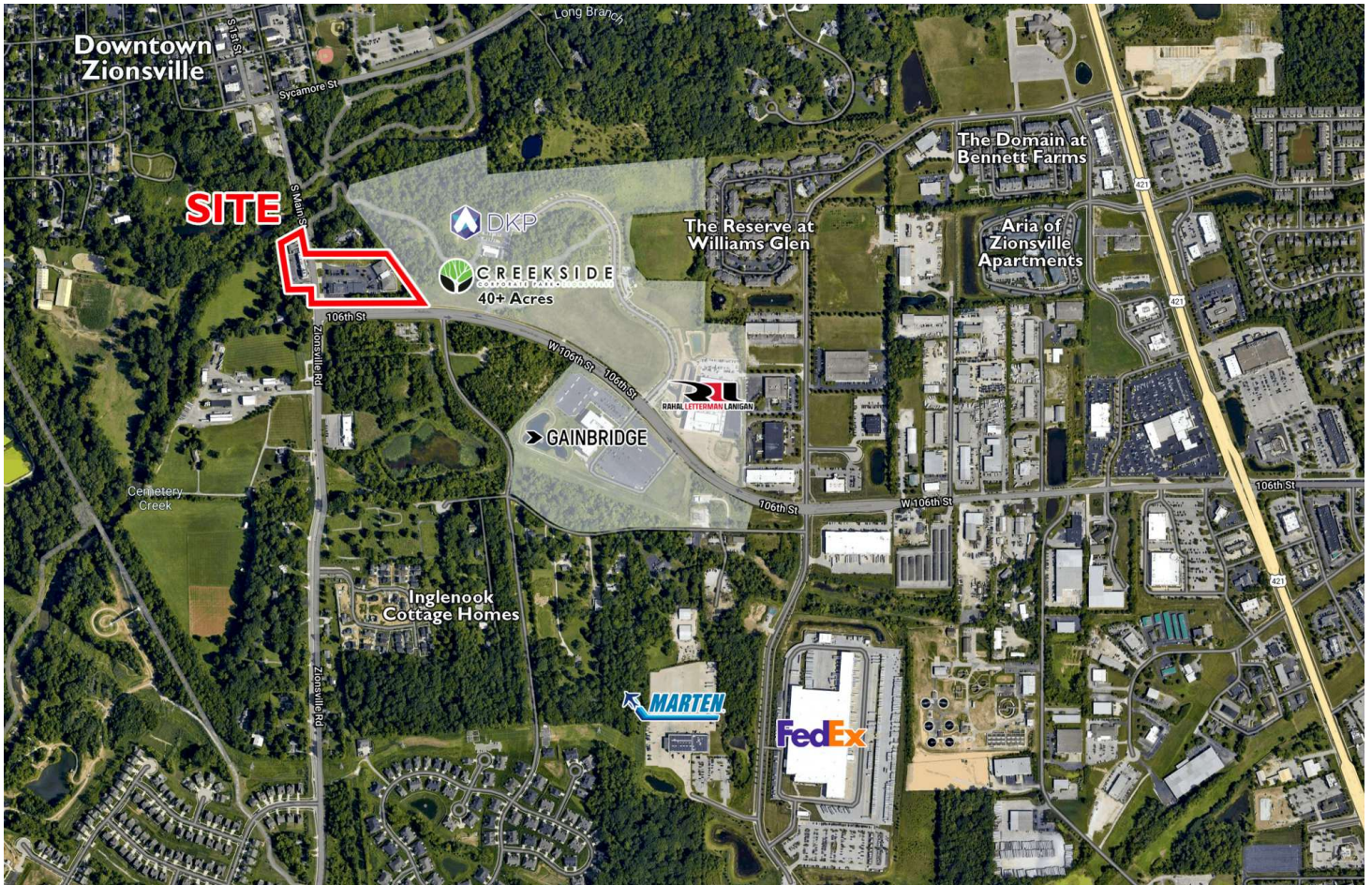
BETH PATTERSON, CCIM
 Senior Vice President | Principal
 317.663.6558
 bpatterson@bradleyco.com



SOUTH VILLAGE OF ZIONSVILLE

SALE/LEASE

RETAIL



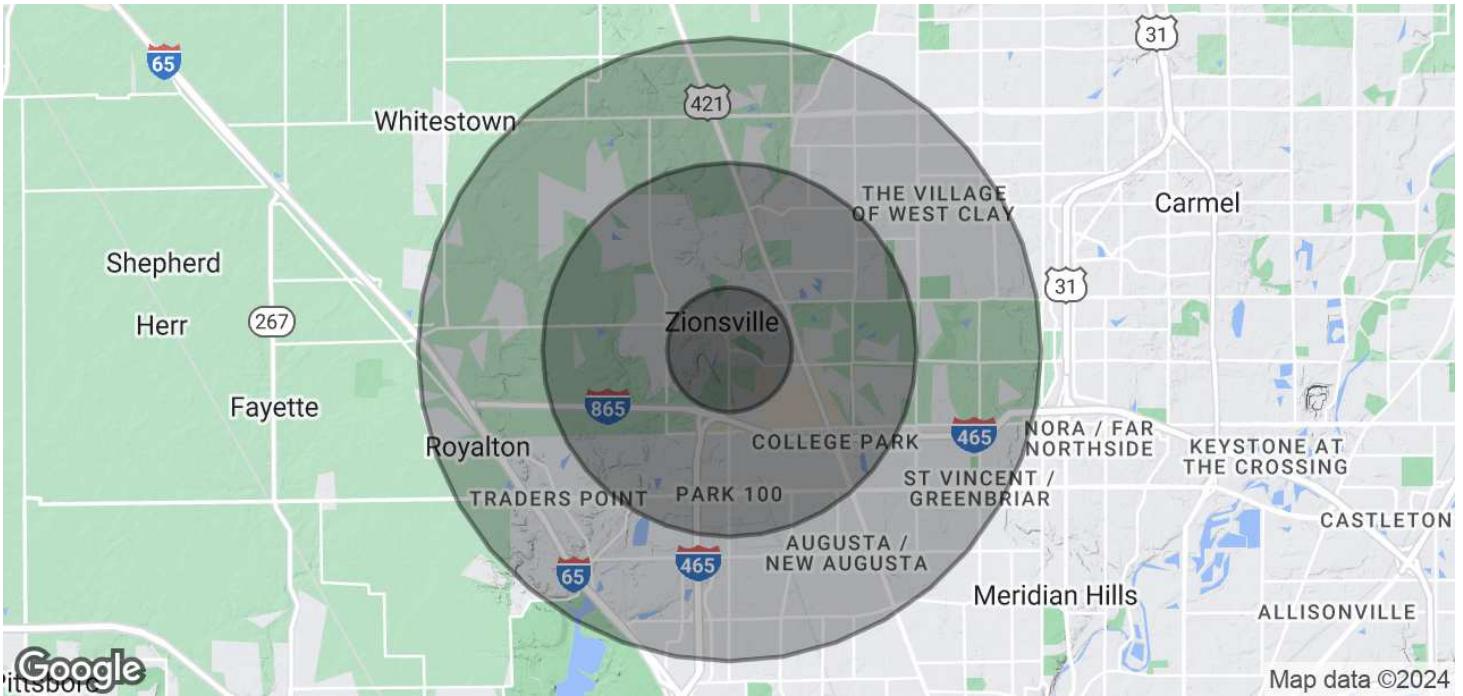
BETH PATTERSON, CCIM
Senior Vice President | Principal
317.663.6558
bpatterson@bradleyco.com



SOUTH VILLAGE OF ZIONSVILLE

SALE/LEASE

RETAIL



DEMOGRAPHICS

1 MILE

3 MILES

5 MILES

Total Population	4,316	30,465	107,028
Total Households	1,951	11,418	41,452
Average HH Income	\$170,880	\$205,429	\$172,521
Average House Value	\$385,544	\$441,520	\$398,053

BETH PATTERSON, CCIM
 Senior Vice President | Principal
 317.663.6558
 bpatterson@bradleyco.com