

# FOR LEASE

## 4583

LAKEVIEW BUSINESS CENTER  
E. Eisenhower Circle,  
Anaheim

## ±7,473 SF



### PROPERTY HIGHLIGHTS

- Part of Larger ±14,546 SF (2)-Tenant Building
- ±3,200 SF Office/Improved Areas (Above Industry Standard Improvements)
- ±3,520 SF Fenced Yard Area
- 400 Amps, 120/208 Volt Power
- 2-Ground Level Truck Doors (12' x 12' & 12' x 14')
- ±16-Foot Warehouse Ceiling Clearance
- Free-Span Warehouse
- Bonus Mezzanine and Secured Storage Room
- Fourteen (14) Parking Stalls
- Natural Gas



**Johnny Eubanks**

Principal | Lee & Associates

**714.272.3737**

DRE# 00695732

[jeubanks@lee-associates.com](mailto:jeubanks@lee-associates.com)

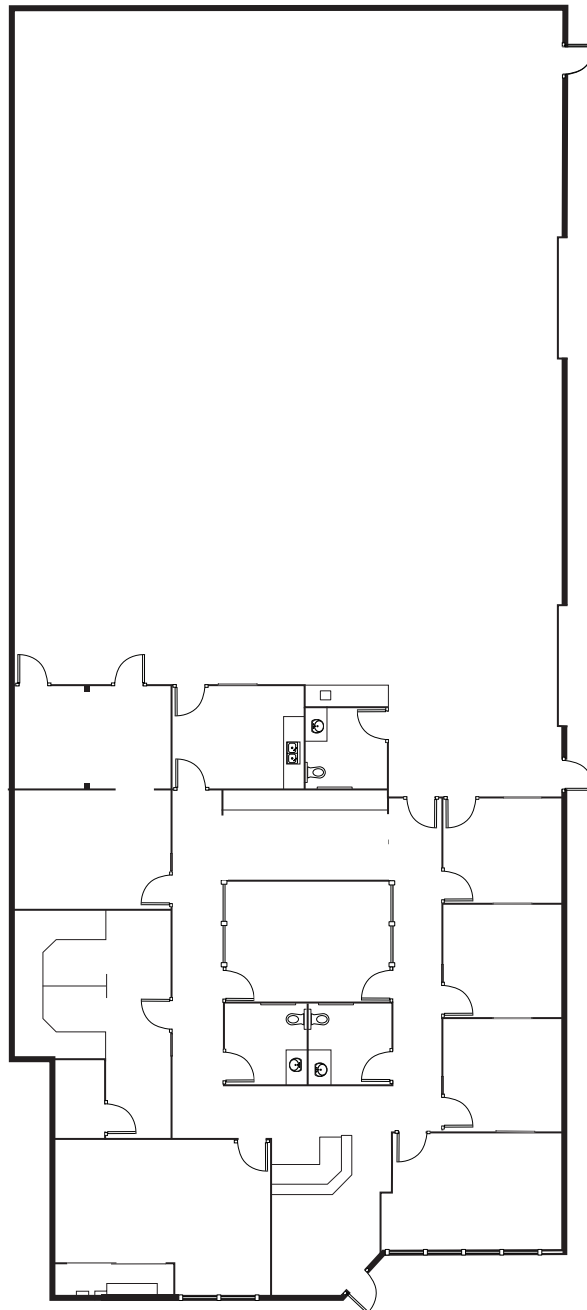
All information contained herein has been provided by Seller/Lessor and/or third parties, but has not been independently verified by Lee & Associates or its agent(s). Buyer/Lessee and interested parties should independently verify all information communicated by these sources.

# FOR LEASE

## 4583

LAKEVIEW BUSINESS CENTER  
E. Eisenhower Circle,  
Anaheim

## ±7,473 SF



**LEE &  
ASSOCIATES**  
COMMERCIAL REAL ESTATE SERVICES

**Johnny Eubanks**

Principal | Lee & Associates

**714.272.3737**

DRE# 00695732

[jeubanks@lee-associates.com](mailto:jeubanks@lee-associates.com)

All information contained herein has been provided by Seller/Lessor and/or third parties, but has not been independently verified by Lee & Associates or its agent(s). Buyer/Lessee and interested parties should independently verify all information communicated by these sources.