

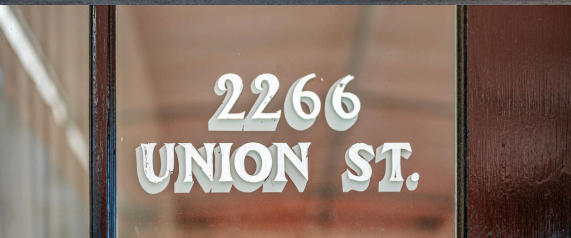
2266 UNION STREET

SAN FRANCISCO, CA



GROUND MATRIX

FOR LEASE



BUILDING SPECS

- +/- 2,500 SQFT
- MARQUEE RETAIL SPACE
- EXPOSED WOOD BEAM CEILING
- ONE BATHROOM
- SKYLIGHTS

JAKE LEVINSON
JAKE@GROUNDMATRIX.COM
(415) 786-4303

UNION STREET RETAIL CENTERPIECE

ASKING PRICE:
\$48/PSF NNN



GROUND MATRIX



GROUND MATRIX

FOR LEASE



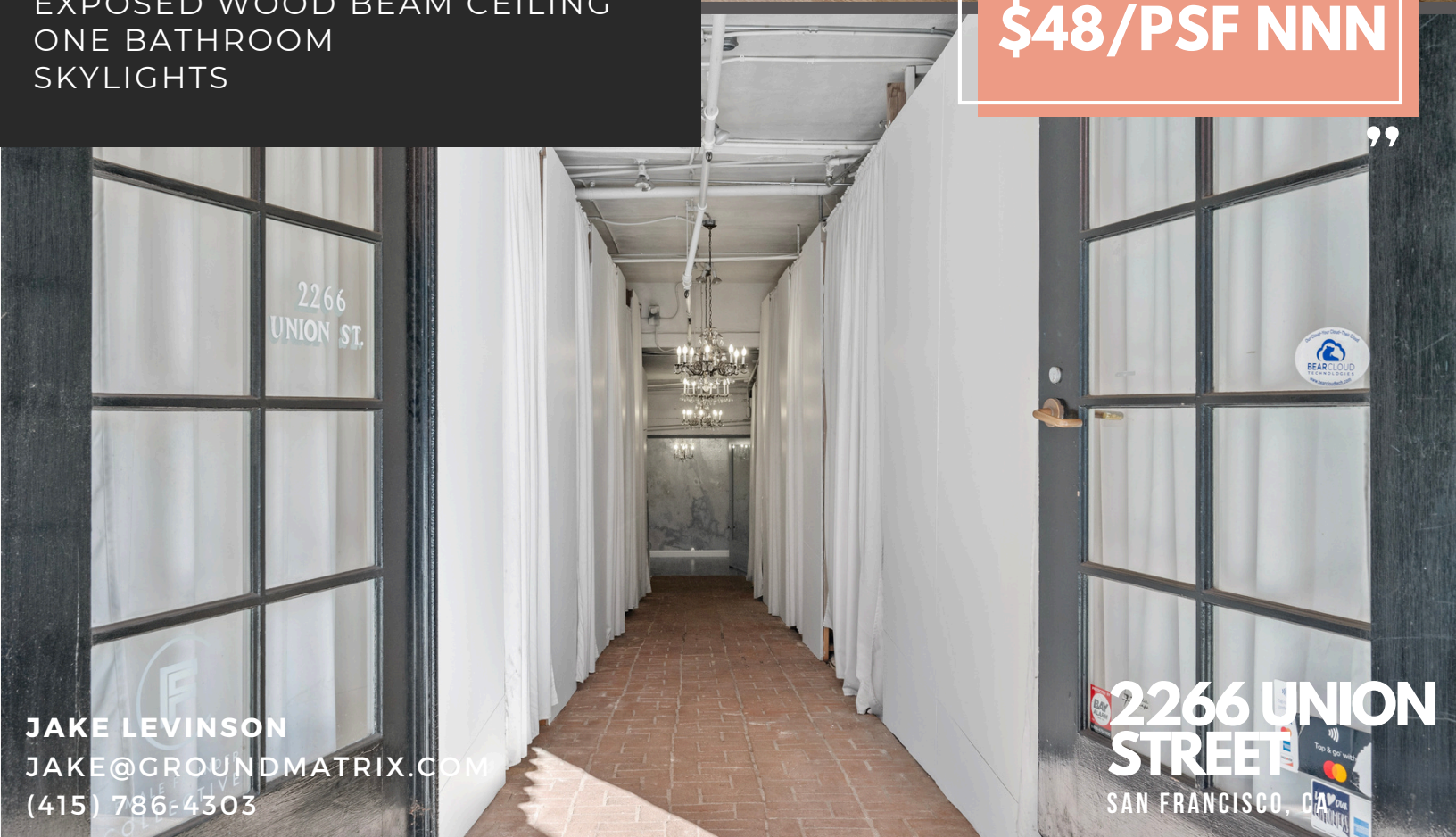
RETAIL SUITE HIGHLIGHTS

- +/- 2,500 SQFT
- MARQUEE RETAIL SPACE
- EXPOSED WOOD BEAM CEILING
- ONE BATHROOM
- SKYLIGHTS

“

ASKING RENT:
\$48/PSF NNN

”



2266
UNION ST.



JAKE LEVINSON
JAKE@GROUNDMATRIX.COM
(415) 786-4303

**2266 UNION
STREET**

SAN FRANCISCO, CA



GROUND MATRIX

FOR LEASE



**2266
UNION ST.**



JAKE LEVINSON
JAKE@GROUNDMATRIX.COM
(415) 786-4303

**2266 UNION
STREET**
SAN FRANCISCO, CA



GROUND MATRIX

FOR LEASE



JAKE LEVINSON
JAKE@GROUNDMATRIX.COM
(415) 786-4303

2266 UNION
STREET
SAN FRANCISCO, CA

2266 UNION STREET

SAN FRANCISCO, CA



TRANSPORTATION

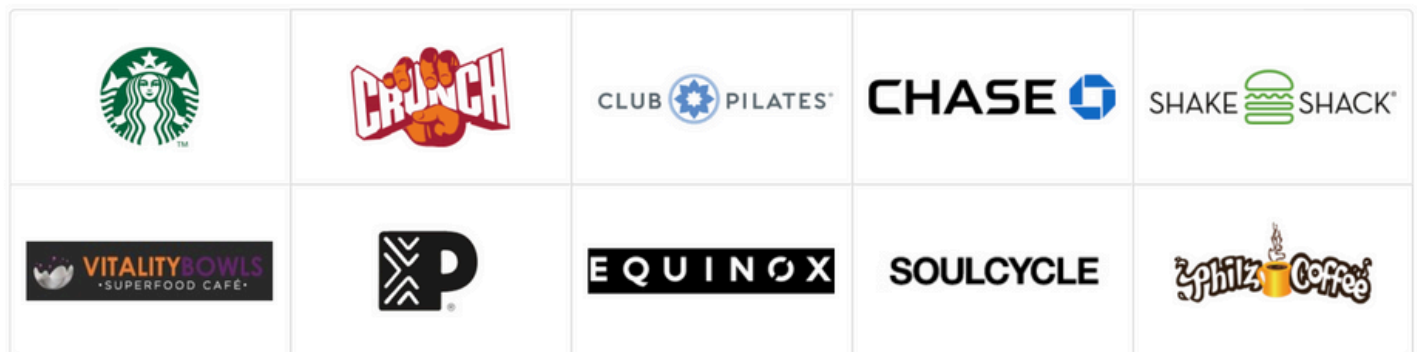
TRANSIT/SUBWAY

Hyde and Union Transit Stop	12 min walk	0.6 mi
Union and Hyde Transit Stop	12 min walk	0.6 mi
Hyde and Filbert Transit Stop	13 min walk	0.7 mi
Hyde and Green Transit Stop	13 min walk	0.7 mi
Hyde and Vallejo Transit Stop	14 min walk	0.7 mi

COMMUTER RAIL

San Francisco 4th & King Commuter Rail (Caltrain)	8 min drive	3.1 mi
22nd Street Commuter Rail (Caltrain)	10 min drive	4.6 mi
Bayshore Commuter Rail (Caltrain)	15 min drive	8.2 mi
South San Francisco Commuter Rail (Caltrain)	21 min drive	12.1 mi
San Bruno Commuter Rail (Caltrain)	25 min drive	14.7 mi

NEARBY MAJOR RETAILERS



JAKE LEVINSON
JAKE@GROUNDMATRIX.COM
(415) 786-4303

2266 UNION STREET
SAN FRANCISCO, CA

LOCATION MAP



GROUND MATRIX

FOR LEASE



**8 MINUTE
WALK TO**



**2266 UNION
STREET**
SAN FRANCISCO, CA

**2266 UNION
STREET**

SAN FRANCISCO, CA

FOR LEASE

**CONTACT
INFORMATION**

Jake Levinson

Jake@groundmatrix.com

(415) 786-4303



GROUND MATRIX