

1553 ALPINE AVENUE NW
GRAND RAPIDS, MICHIGAN

OFFICE FOR SALE
2,088 Square Feet Available



**SIGNATURE
ASSOCIATES**
KNOW SIGNATURE | KNOW RESULTS

FULL CITY BLOCK



PROPERTY FEATURES

- 2,088 total square foot building
- Located on 0.59 acres
- Zoned TN-TBA
- Built in 1970; Retrofit 2001
- Sale Price: \$775,000 (\$371.17/sf)

Comments: Free standing brick building on a lighted intersection along busy Alpine Avenue. Ample private parking. Zoned TN-TBA, allowing a variety of uses for commercial, office and retail. Site has a small pad adjacent building that can be redeveloped. Site has over 250' of frontage along Alpine Avenue.



For more information, please contact:

JOE RIZQALLAH
(616) 822 6310

jrizqallah@signatureassociates.com

PETER CACHEY
(616) 259 6386

pcachey@signatureassociates.com

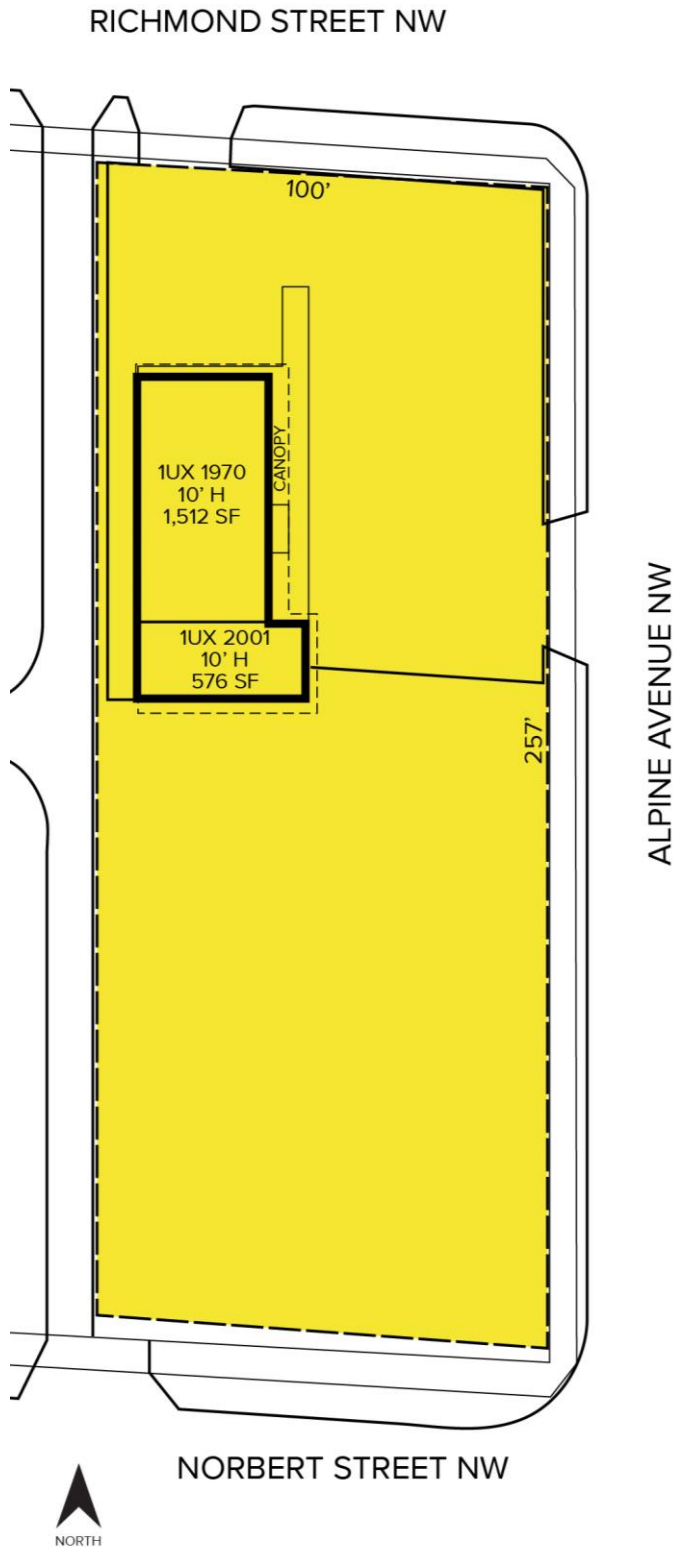
SIGNATURE ASSOCIATES
1188 East Paris Ave SE, Suite 220
Grand Rapids, MI 49546
www.signatureassociates.com

1553 Alpine Avenue NW – Grand Rapids, Michigan

Office for Sale

2,088
Square Feet
AVAILABLE

Site Plan



For more information, please contact:

JOE RIZQALLAH

(616) 822 6310

jrizqallah@signatureassociates.com

PETER CACHEY

(616) 259 6386

pcachey@signatureassociates.com

SIGNATURE ASSOCIATES

1188 East Paris Ave SE, Suite 220

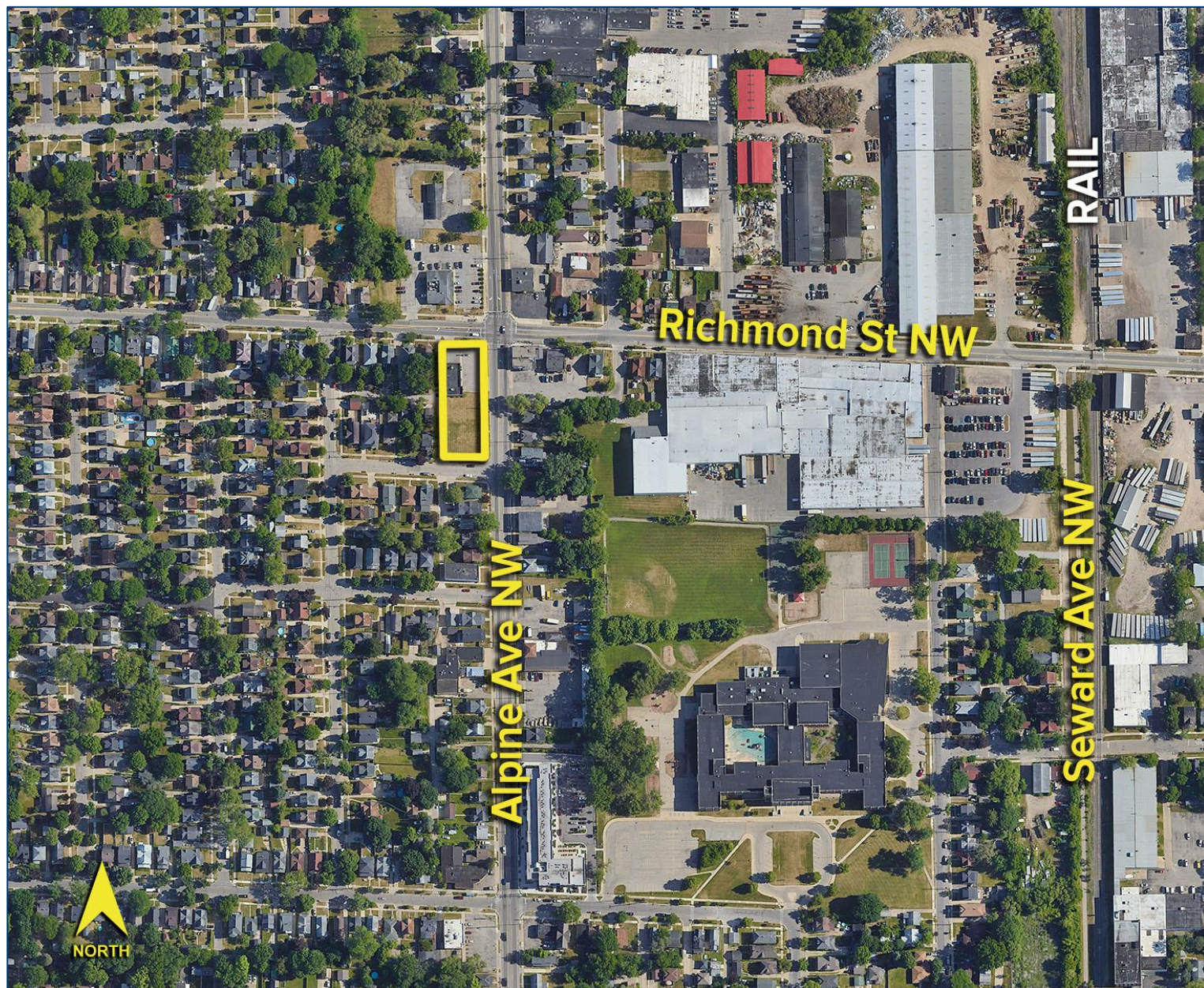
Grand Rapids, MI 49546

www.signatureassociates.com

1553 Alpine Avenue NW – Grand Rapids, Michigan
Office for Sale

2,088
Square Feet
AVAILABLE

Aerial



For more information, please contact:

JOE RIZQALLAH

(616) 822 6310

jrizqallah@signatureassociates.com

PETER CACHEY

(616) 259 6386

pcachey@signatureassociates.com

SIGNATURE ASSOCIATES

1188 East Paris Ave SE, Suite 220

Grand Rapids, MI 49546

www.signatureassociates.com