

COMMERCIAL BUILDING FOR SALE

2621 Pelham Parkway ♦ Pelham, AL ♦ 35124 ♦ Shelby County



2,480 Sq. Ft. Building on .5 Acres ♦ ASKING PRICE: \$669,000

Mark Dinan, MBA, CCIM

(o) 205-980-3434

(c) 205-243-3434

markdinan@bellsouth.net

MARK DINAN
Commercial & Investment Real Estate

MEMBER:  Experts in Commercial Investment Real Estate
  LoopNet™  CREXi

*All Information furnished regarding property sale, rental, or financing is from sources deemed reliable, but is not guaranteed.

PROPERTY DETAILS

2621 Pelham Parkway ♦ Pelham, AL ♦ 35124 ♦ Shelby County

- ♦ 2,480 +.- SF Building
- ♦ .50 Acre Lot
- ♦ Building and Monument Signage
- ♦ Outstanding location on Pelham Parkway
- ♦ High Quality Construction
- ♦ Excellent Parking (20 spaces)
- ♦ Easy Access.
- ♦ Constructed in 1993
- ♦ Ideal for Retail, Office, Medical.
- ♦ High Traffic Counts (30,000 + Cars Per Day)
- ♦ Major activity generators include Campus 124.
- ♦ Property Taxes: \$4,200
- ♦ Guitar Gallery consolidating into its Tuscaloosa location after 25 years in Pelham making this one of a kind opportunity available.



Mark Dinan, MBA, CCIM

(c) 205-980-3434

(c) 205-243-3434

markdinan@bellsouth.net

MARK DINAN
Commercial & Investment Real Estate



*All Information furnished regarding property sale, rental, or financing is from sources deemed reliable, but is not guaranteed.

BIRDS EYE VIEW

2621 Pelham Parkway ◇ Pelham, AL ◇ 35124 ◇ Shelby County



Mark Dinan, MBA, CCIM

(c) 205-980-3434

(c) 205-243-3434

markdinan@bellsouth.net

MARK DINAN
Commercial & Investment Real Estate



*All Information furnished regarding property sale, rental, or financing is from sources deemed reliable, but is not guaranteed.

BIRDS EYE VIEW

2621 Pelham Parkway ♦ Pelham, AL ♦ 35124 ♦ Shelby County



Mark Dinan, MBA, CCIM

(c) 205-980-3434

(c) 205-243-3434

markdinan@bellsouth.net

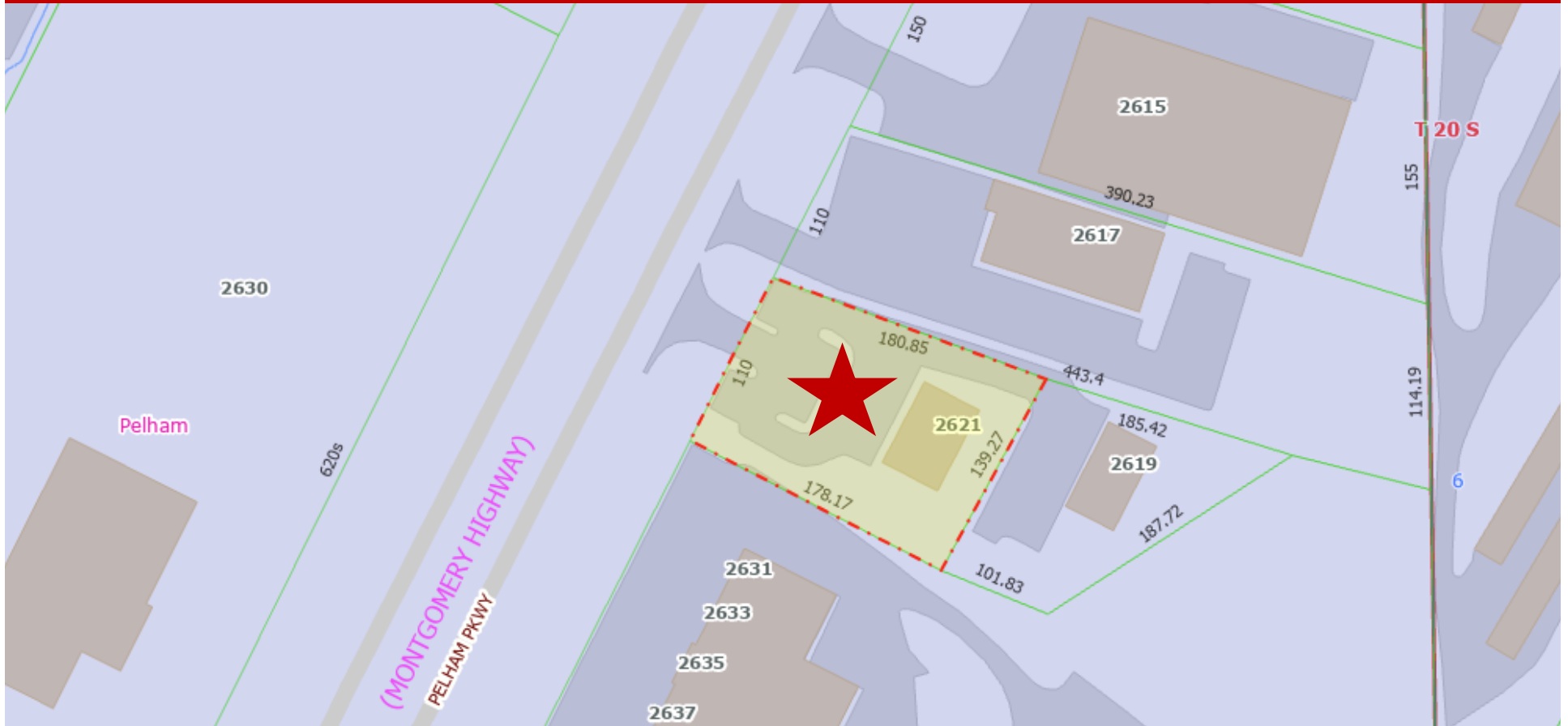
MARK DINAN
Commercial & Investment Real Estate



*All Information furnished regarding property sale, rental, or financing is from sources deemed reliable, but is not guaranteed.

PLAT MAP

2621 Pelham Parkway ◇ Pelham, AL ◇ 35124 ◇ Shelby County



Mark Dinan, MBA, CCIM

(c) 205-980-3434

(c) 205-243-3434

markdinan@bellsouth.net

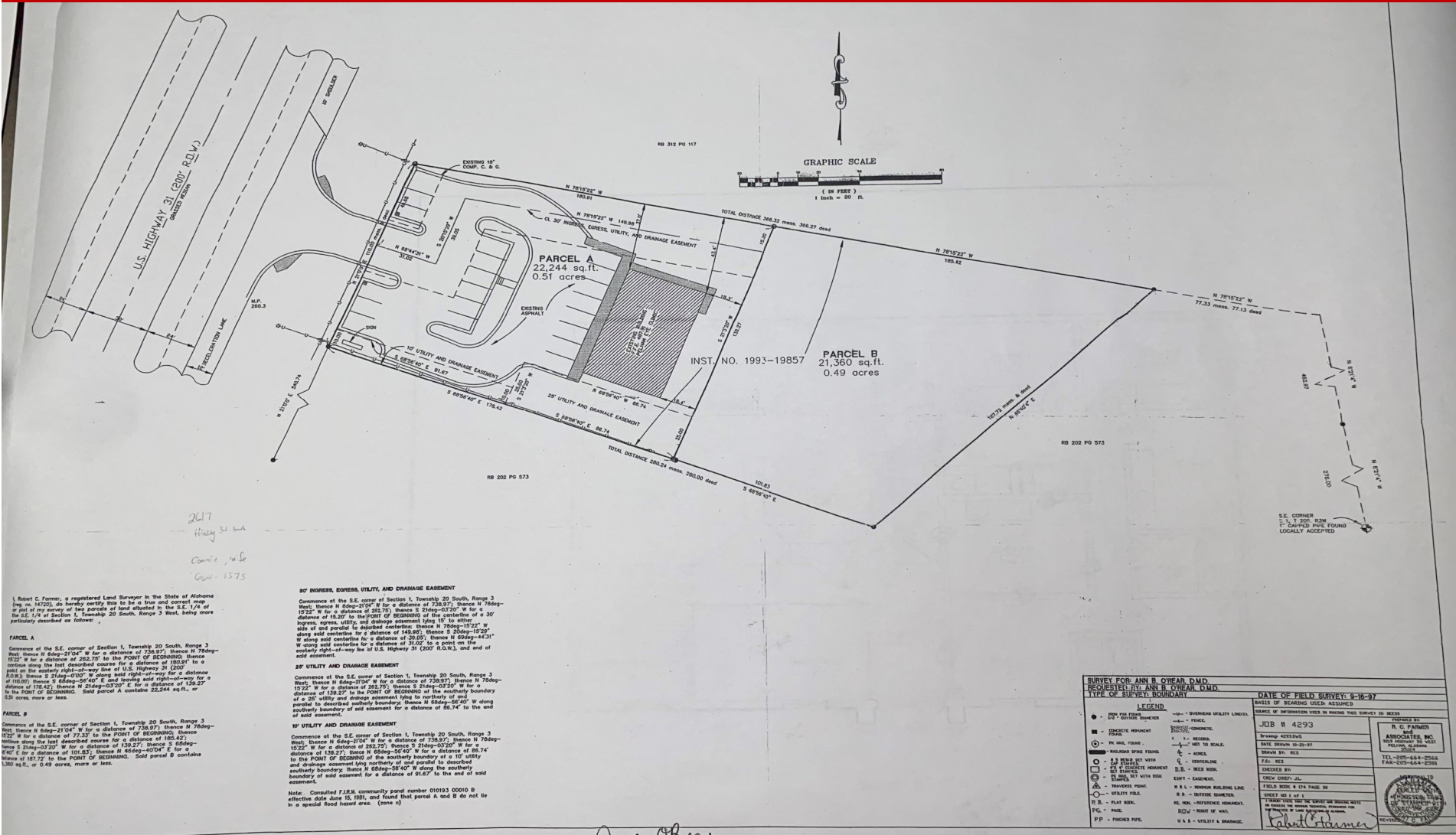
MARK DINAN
Commercial & Investment Real Estate



*All Information furnished regarding property sale, rental, or financing is from sources deemed reliable, but is not guaranteed.

SURVEY

2621 Pelham Parkway ♦ Pelham, AL ♦ 35124 ♦ Shelby County



2617 Hwy 31 SW
Comie 146
Com-1575

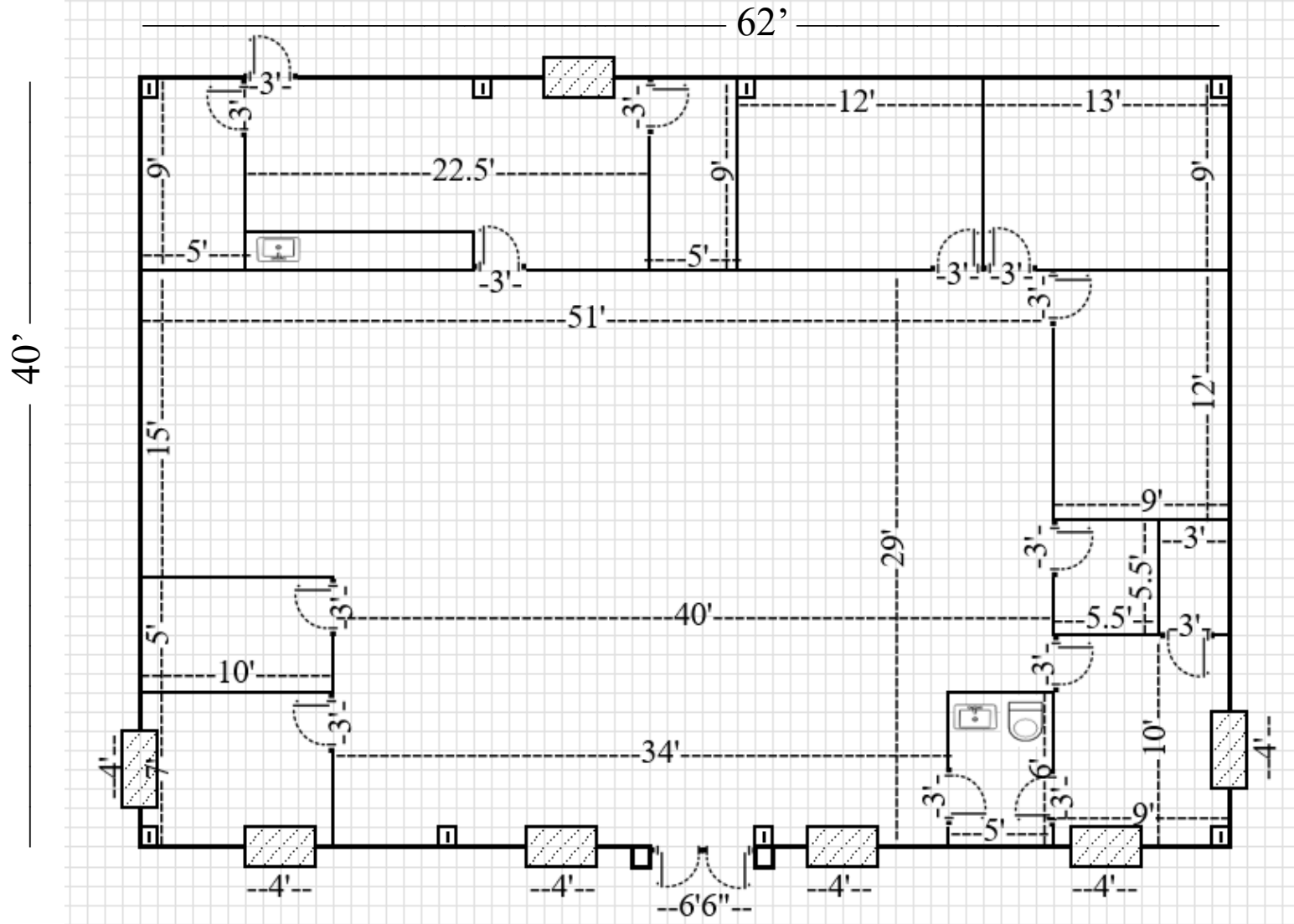
Ann O'Rear

MARK DINAN
Commercial & Investment Real Estate

*All Information furnished regarding property sale, rental, or financing is from sources deemed reliable, but is not guaranteed.

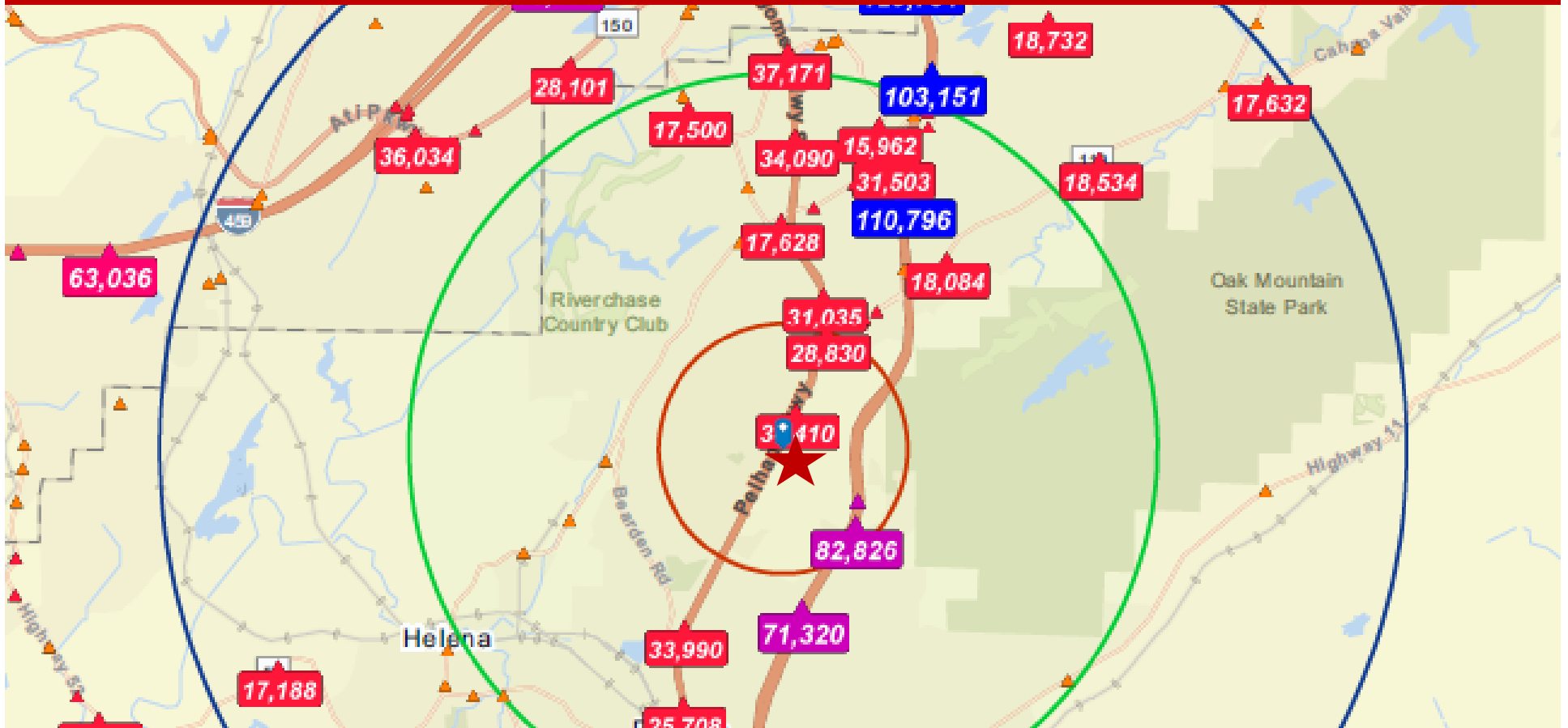
FLOOR PLAN

2621 Pelham Parkway ♦ Pelham, AL ♦ 35124 ♦ Shelby County



TRAFFIC COUNTS

2621 Pelham Parkway ◇ Pelham, AL ◇ 35124 ◇ Shelby County



Mark Dinan, MBA, CCIM

(c) 205-980-3434

(c) 205-243-3434

markdinan@bellsouth.net

MARK DINAN
Commercial & Investment Real Estate

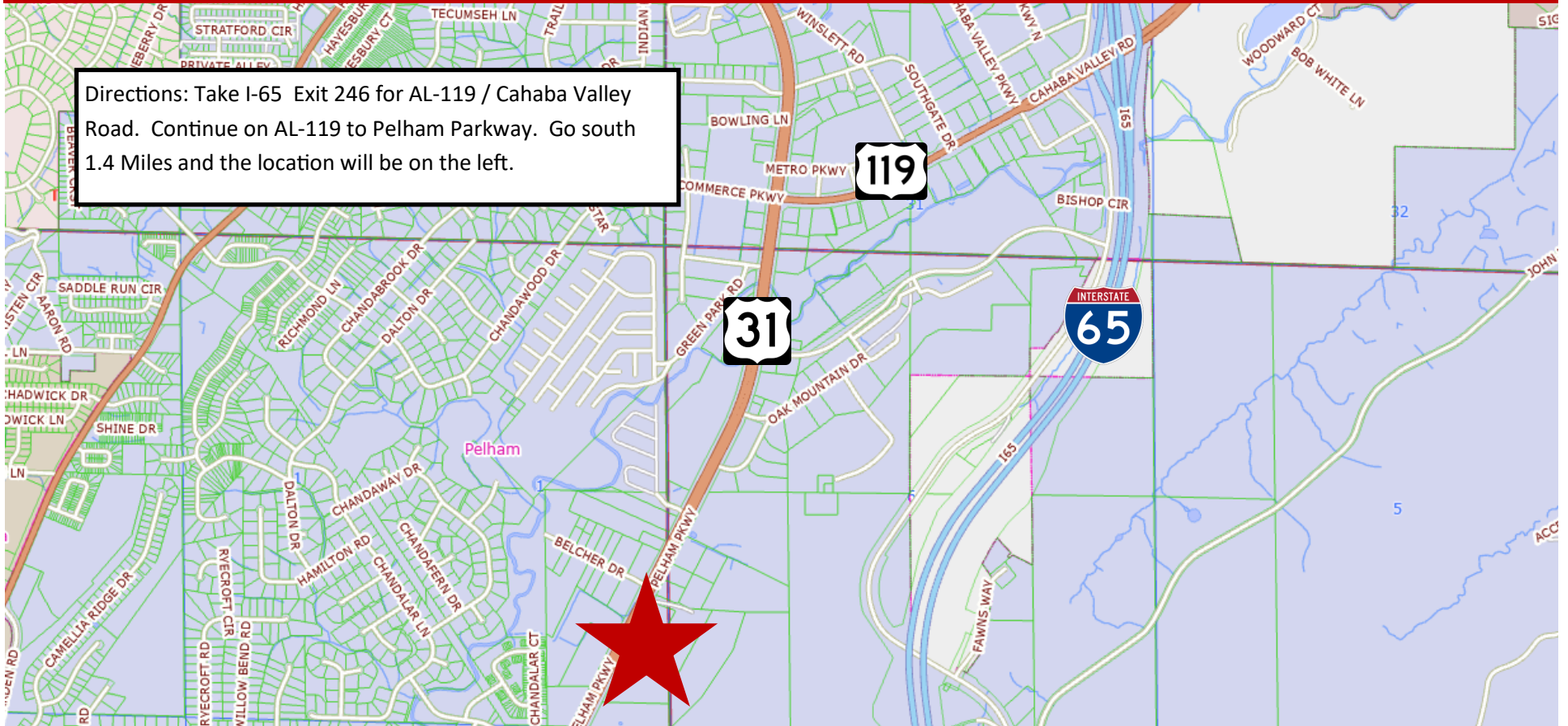


*All Information furnished regarding property sale, rental, or financing is from sources deemed reliable, but is not guaranteed.

LOCATION MAP

2621 Pelham Parkway ♦ Pelham, AL ♦ 35124 ♦ Shelby County

Directions: Take I-65 Exit 246 for AL-119 / Cahaba Valley Road. Continue on AL-119 to Pelham Parkway. Go south 1.4 Miles and the location will be on the left.



Mark Dinan, MBA, CCIM

(c) 205-980-3434

(c) 205-243-3434

markdinan@bellsouth.net

MARK DINAN
Commercial & Investment Real Estate



*All Information furnished regarding property sale, rental, or financing is from sources deemed reliable, but is not guaranteed.

LOCATION MAP

2621 Pelham Parkway ♦ Pelham, AL ♦ 35124 ♦ Shelby County



Mark Dinan, MBA, CCIM

(c) 205-980-3434

(c) 205-243-3434

markdinan@bellsouth.net

MARK DINAN
Commercial & Investment Real Estate



*All Information furnished regarding property sale, rental, or financing is from sources deemed reliable, but is not guaranteed.

DEMOGRAPHICS

2621 Pelham Parkway ♦ Pelham, AL ♦ 35124 ♦ Shelby County

DEMOGRAPHIC SUMMARY

2621 Pelham Pkwy, Pelham, Alabama, 35124
Ring of 5 miles

KEY FACTS

93,309

Population



36,984

Households

38.6

Median Age

\$78,214

Median Disposable Income

EDUCATION

3.3%

No High School Diploma



17.5%

High School Graduate



24.3%

Some College/
Associate's Degree



54.8%

Bachelor's/Grad/ Prof Degree

INCOME



\$98,562

Median Household Income



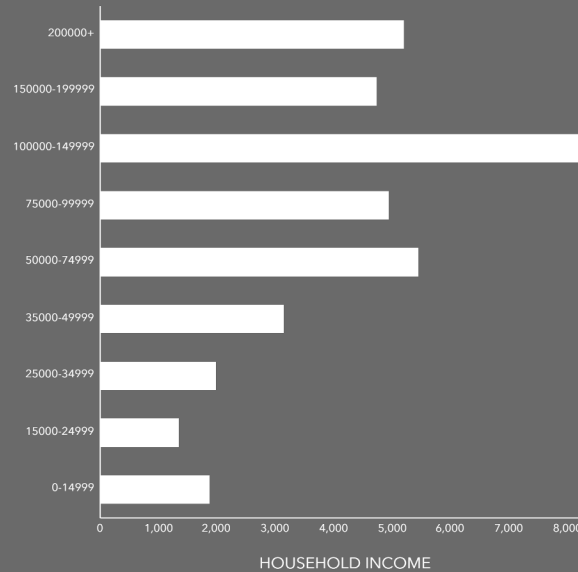
\$49,605

Per Capita Income

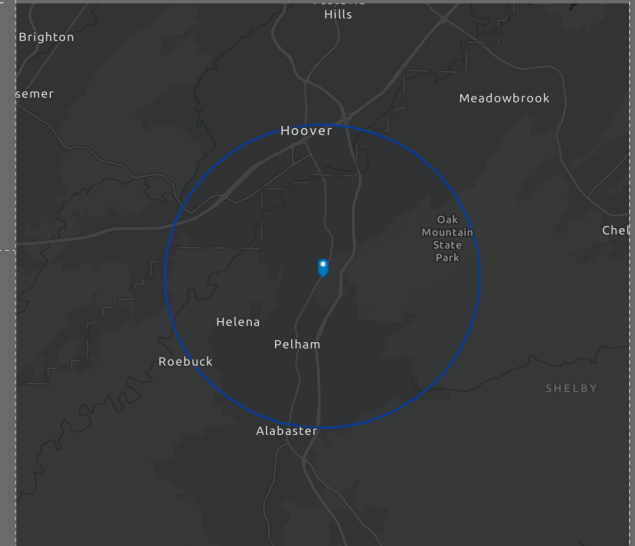


\$335,068

Median Net Worth



HOUSEHOLD INCOME



EMPLOYMENT



White Collar

73.4%



Blue Collar

15.3%



Services

12.4%

2.6%

Unemployment Rate

Mark Dinan, MBA, CCIM

(o) 205-980-3434

(c) 205-243-3434

markdinan@bellsouth.net

MARK DINAN
Commercial & Investment Real Estate



*All Information furnished regarding property sale, rental, or financing is from sources deemed reliable, but is not guaranteed.