

REMODELED SKELLY DRIVE MEDICAL/OFFICE BUILDING FOR LEASE



2865 E SKELLY DR, TULSA, OK 74105

SIZES

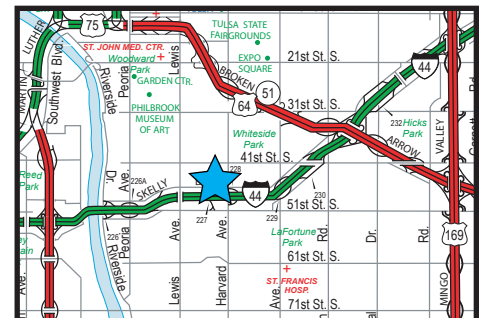
- 1,562 to 2,900 RSF space sizes ±
(See Floor Plan)

FEATURES

- Newly remodeled building
- Generous Improvements with qualified leases/terms
- Large I-44 Facing Monument Signage
- Common ADA restrooms
- Oversized parking with 95 spaces ±
- Fresenius Dialysis Clinic next door (2017 YOC)
- Local responsive ownership
- Great central Tulsa location next to widened I-44 (Skelly Drive)
- Convenient I-44 service road
- Refinished parking lot with decorative bumpers



New Marquee Signage



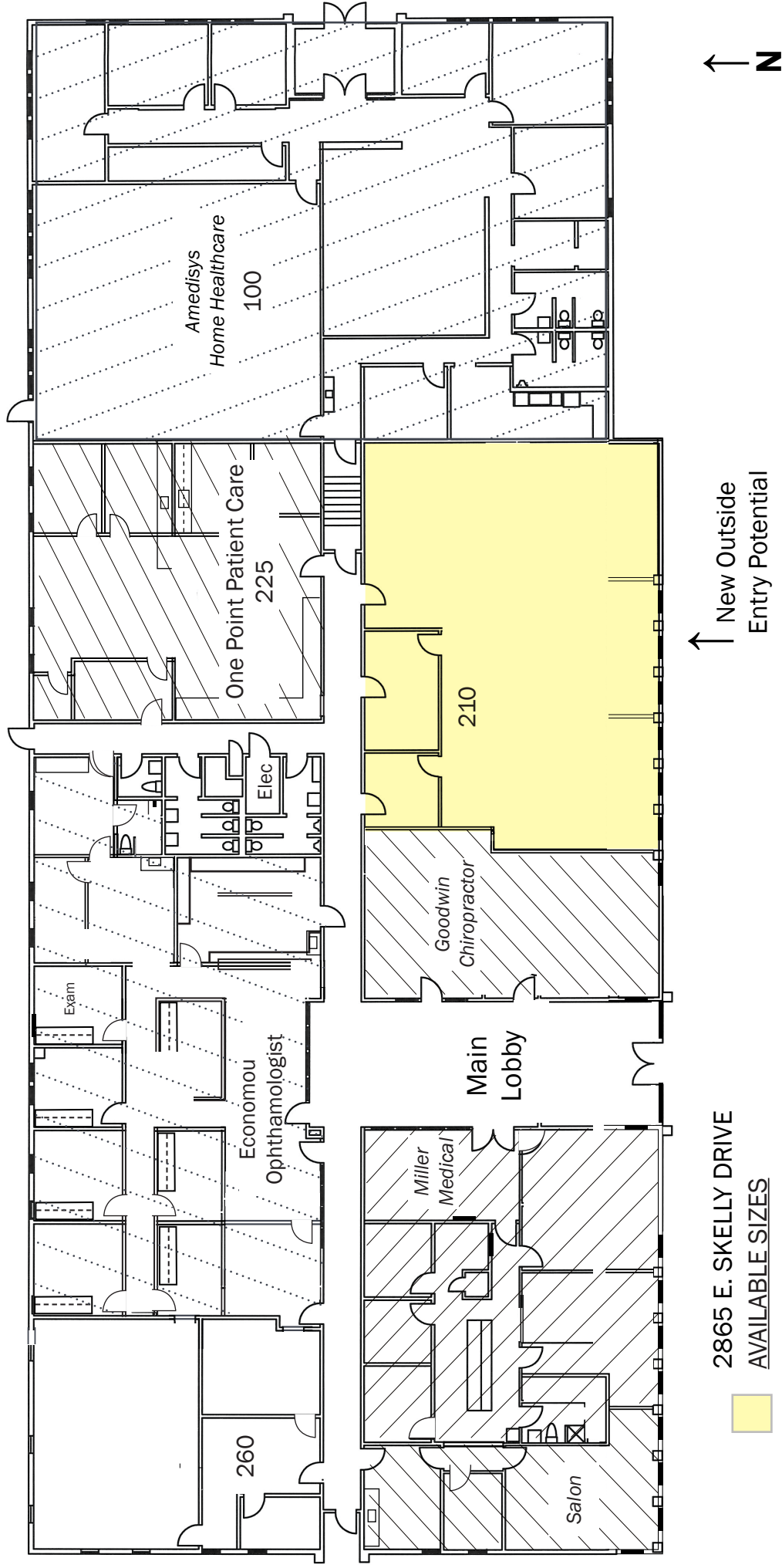
The information contained herein is believed to be accurate but is not guaranteed as to accuracy and may change or be updated without notice.

Contact: Monty Berry, CCIM

Office (918) 280-9900 | **Cell** (918) 695-4162 | **Fax** (918) 280-9902

E-mail Monty@EquitasRealty.com

Floor Plan



Aerial



Building Front Entry



Front Exterior



Lobby



Tenant Finish Sample