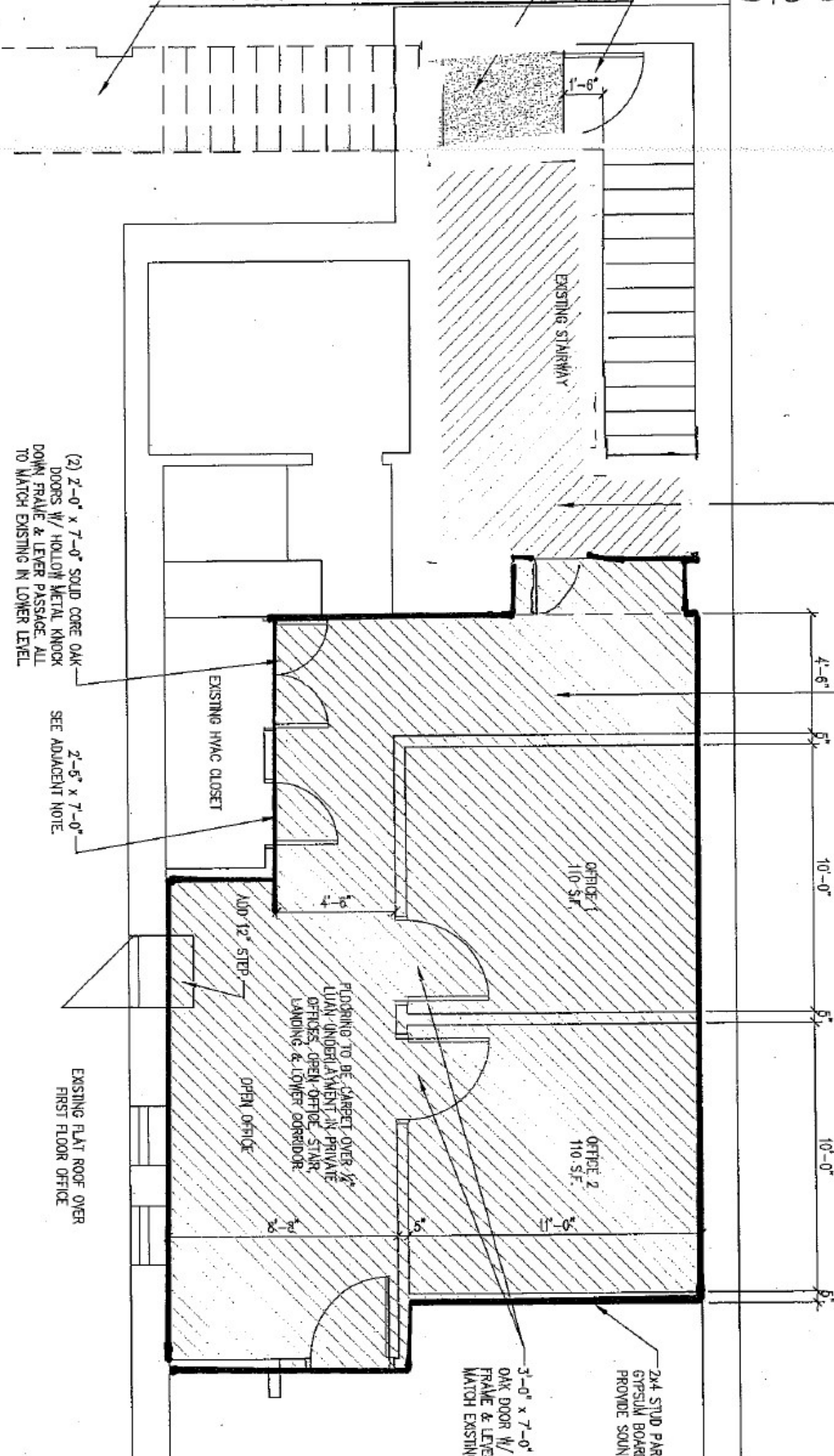


EXHIBIT A - EXPANSION SPACE

510 sq. ft.

103 SQUARE FEET

510 SQUARE FEET



(2) 2'-0" x 7'-0" SOLID CORE OAK DOORS W/ HOLLOW METAL KNOCK DOWN FRAME & LEVER PASSAGE. ALL TO MATCH EXISTING IN LOWER LEVEL.

SEE ADJACENT NOTE.

2'-5" x 7'-0"

EXISTING HVAC CLOSET

2'-5" x 7'-0" STEP

OPEN OFFICE

FLOORING TO BE CARPET OVER 1/2" LUAN UNDERLAYMENT IN PRIVATE OFFICES, OPEN OFFICE, STAIR LANDING & LOBBY CORRIDOR.

OFFICE 1
110 SF.

OFFICE 2
110 SF.

EXISTING FLAT ROOF OVER FIRST FLOOR OFFICE

3'-0" x 7'-0" OAK DOOR W/ LEVER FRAME & LEVER MATCH EXISTING

2x4 STUD PAR GYPSUM BOARD PROVIDE SOUND