

FOR LEASE  
**990**

SIERRA VISTA DRIVE  
LAS VEGAS, NV 89169



LOGIC



**JENNY LI, PH.D.**  
Vice President  
S.0191657  
O: 702.954.4103  
C: 312.927.9929  
jli@logicCRE.com

990 Sierra Vista Drive  
Las Vegas, NV 89169



## Property Highlights

- Within two miles to the Las Vegas Strip
- Less than half-mile to the Las Vegas Convention Center
- High-traffic residential area
- Located in an Opportunity Zone, with funds available for qualifying businesses

## Listing Snapshot



**\$1.50 PSF**  
Lease Rate



**+/- 1,100 SF**  
Available SF



**162-15-501-025**  
Parcel Number (APN)

## Demographics

Population	1-mile	3-mile	5-mile
2022 Population	31,673	167,110	450,625

Income	1-mile	3-mile	5-mile
2022 Average Household Income	\$54,619	\$64,137	\$65,126

Households	1-mile	3-mile	5-mile
2022 Total Households	14,753	75,277	180,470

LOGIC   

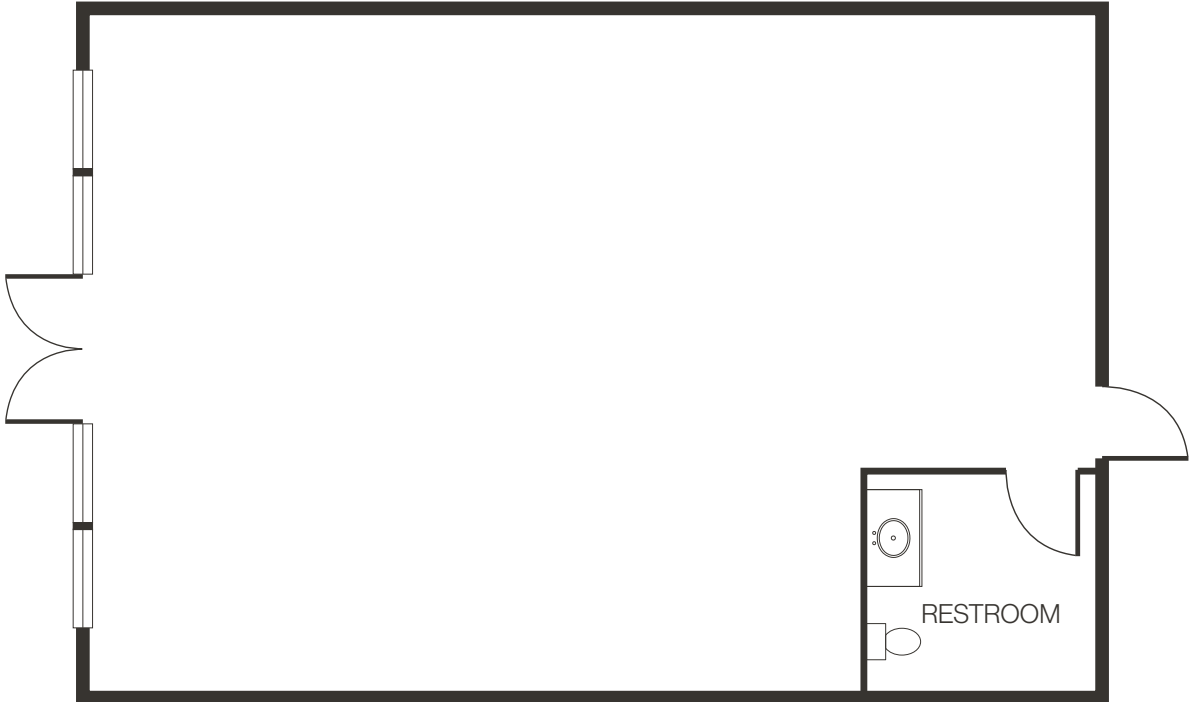
The information herein was obtained from sources deemed reliable; however Logic Commercial Real Estate makes no guarantees, warranties or representation as to the completeness or accuracy thereof.



# Site Plan



Floor Plan | +/- 1,100 SF



# Exterior Photos

