

Flex/Office For Lease

CBRE

53 Haddonfield Road Cherry Hill, NJ

75,213 SF Flex/Office Building



13,204

RSF AVAILABLE SUITE 300

11,348

RSF AVAILABLE SUITE 306

8,685

RSF AVAILABLE SUITE 316

Property Highlights

- Single-story building with no loss factor and direct private access to suite
- Very efficient layout with open bullpen areas and individual offices
- Loading can be added as needed
- Monument tenant directory and suite signage available
- Prime location situated minutes from Cherry Hill Mall and Garden State Park
- Strategically located with easy access to NJ Tpk, I-295 and Route 38
- Minutes from Center City Philadelphia

Building Features:

Suite 300: 13,204 SF*

Suite 306: 11,348 SF*

Suite 316: 8,685 SF

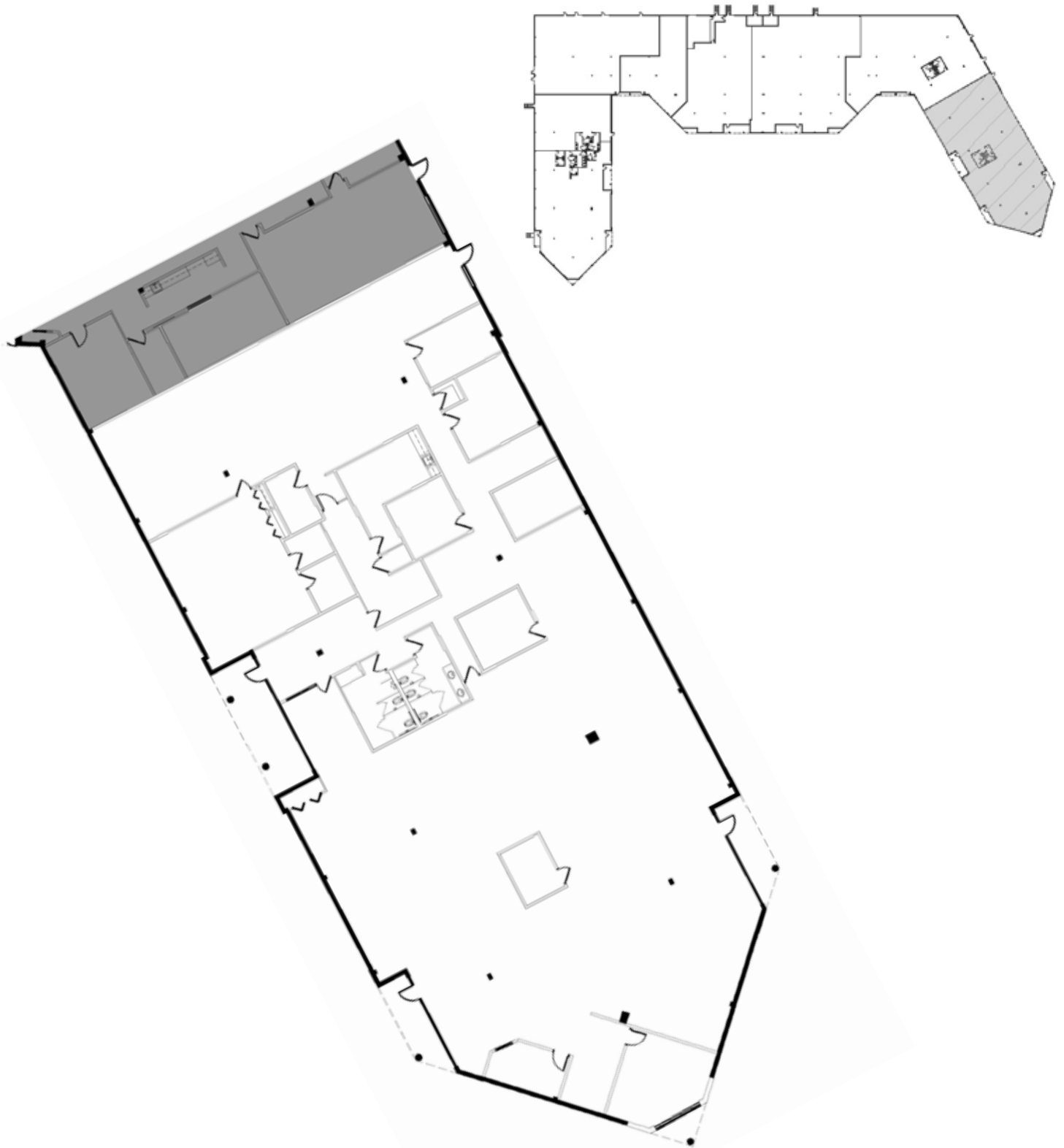
Asking Lease Rate: Negotiable

Parking Ratio: 4.23 / 1,000 SF

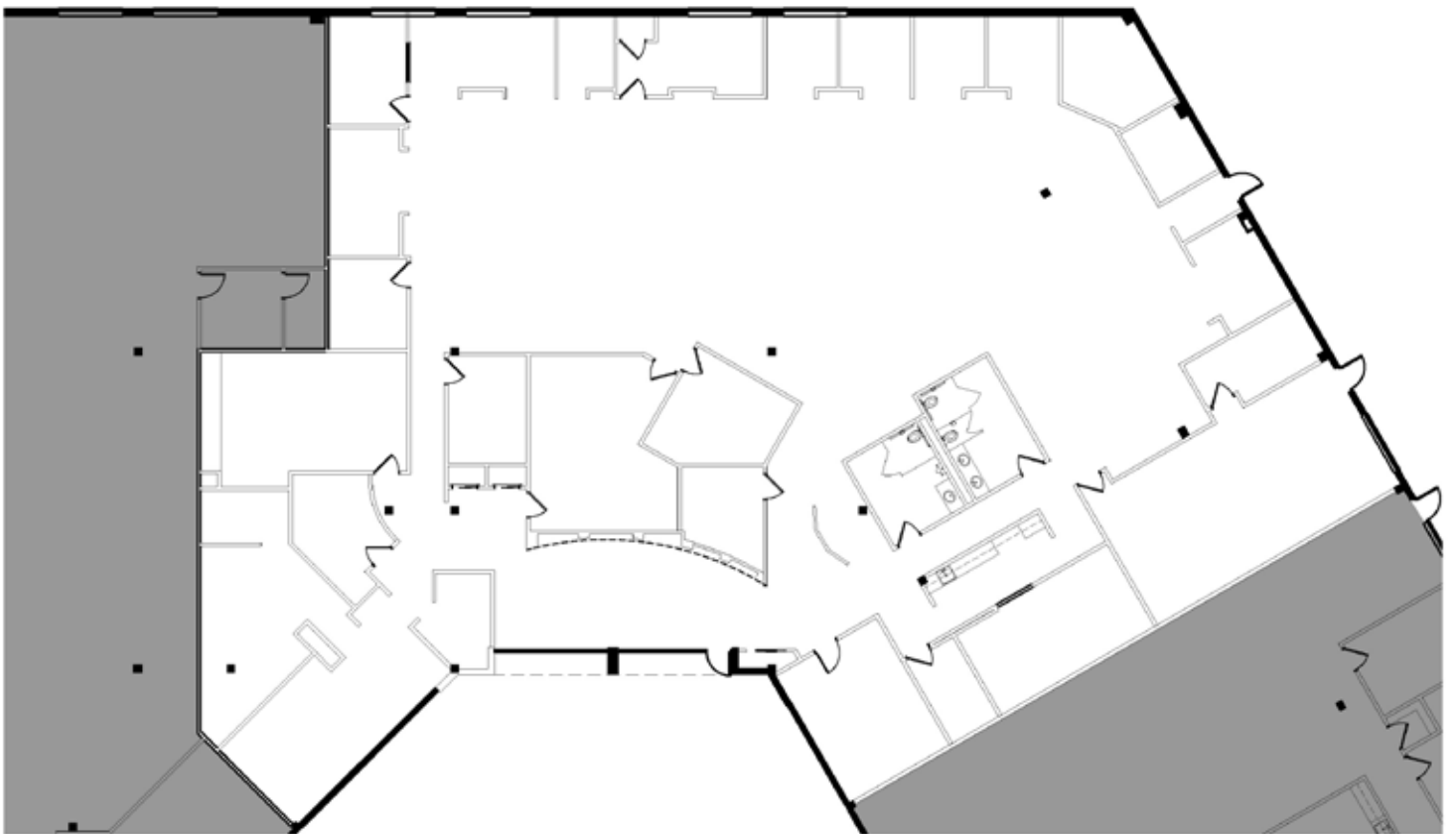
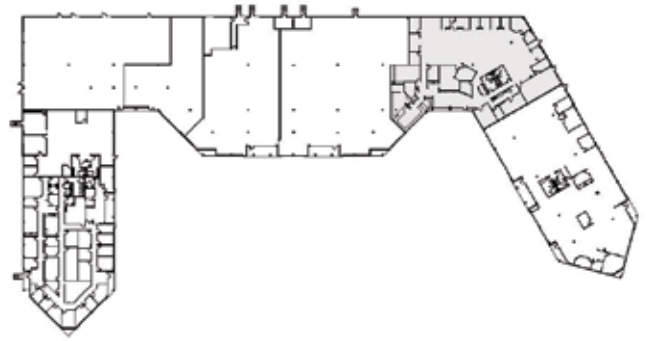
* Suites 300 and 306 can be made contiguous



Suite 300: 13,204 RSF



Suite 306: 11,348 RSF



Suite 316: 8,685 RSF



Local Amenities



Contact Us

Lisa Gibson

First Vice President

+1 856 359 9413

lisa.gibson@cbre.com

Licensed Broker-Salesperson: NJ

Licensed: PA

Brian Saggiomo

First Vice President

+1 856 359 9408

brian.saggiomo@cbre.com

Licensed Broker-Salesperson: NJ

Licensed: PA

Jon Sarkisian

Executive Vice President

+1 856 359 9408

jon.sarkisian@cbre.com

Licensed Broker-Salesperson: NJ

Licensed: PA

CBRE, Inc.

1000 Atrium Way, Ste 101

Mt. Laurel, NJ 08054

+1 856 359 9500

www.cbre.com

Licensed Real Estate Broker

© 2025 CBRE, Inc. All rights reserved. This information has been obtained from sources believed reliable, but has not been verified for accuracy or completeness. You should conduct a careful, independent investigation of the property and verify all information. Any reliance on this information is solely at your own risk. CBRE and the CBRE logo are service marks of CBRE, Inc. All other marks displayed on this document are the property of their respective owners, and the use of such logos does not imply any affiliation with or endorsement of CBRE. Photos herein are the property of their respective owners. Use of these images without the express written consent of the owner is prohibited.