

Metro Community
College

MENARDS

ACCESS

LOT
.70 Acres

204th & Roberts Dr

Elkhorn, NE 68022

LOT | FOR LEASE

PROPERTY HIGHLIGHTS



ADDRESS:

204th & Roberts Dr
Elkhorn, NE 68022



LOT SIZE:

.70 Acres



LEASE RATE:

Negotiable



ZONING:

Commercial



ACCESS Commercial, LLC
www.accesscommercial.com
10730 Pacific Street, Suite 230
Omaha, NE 68114 | 402.502.1983

ABOUT THE PROPERTY

Prime commercial opportunity on 0.70 acres with direct frontage along 204th Street in the rapidly expanding Elkhorn area. Surrounded by high traffic neighbors including Metro Community College, Elkhorn High School, Menards, Bowlero, and the UBT Sports Complex, this site offers exceptional visibility and accessibility. Positioned adjacent to a popular Sonic Restaurant, the property benefits from a strong customer draw and sits in a community marked by high household incomes and sustained population growth. With limited retail and dining options currently available, this is an ideal location for a national retailer or restaurant looking to establish a presence in one of Elkhorn's most strategic corridors.

Amber Olson

amber@accesscommercial.com
402.618.5523



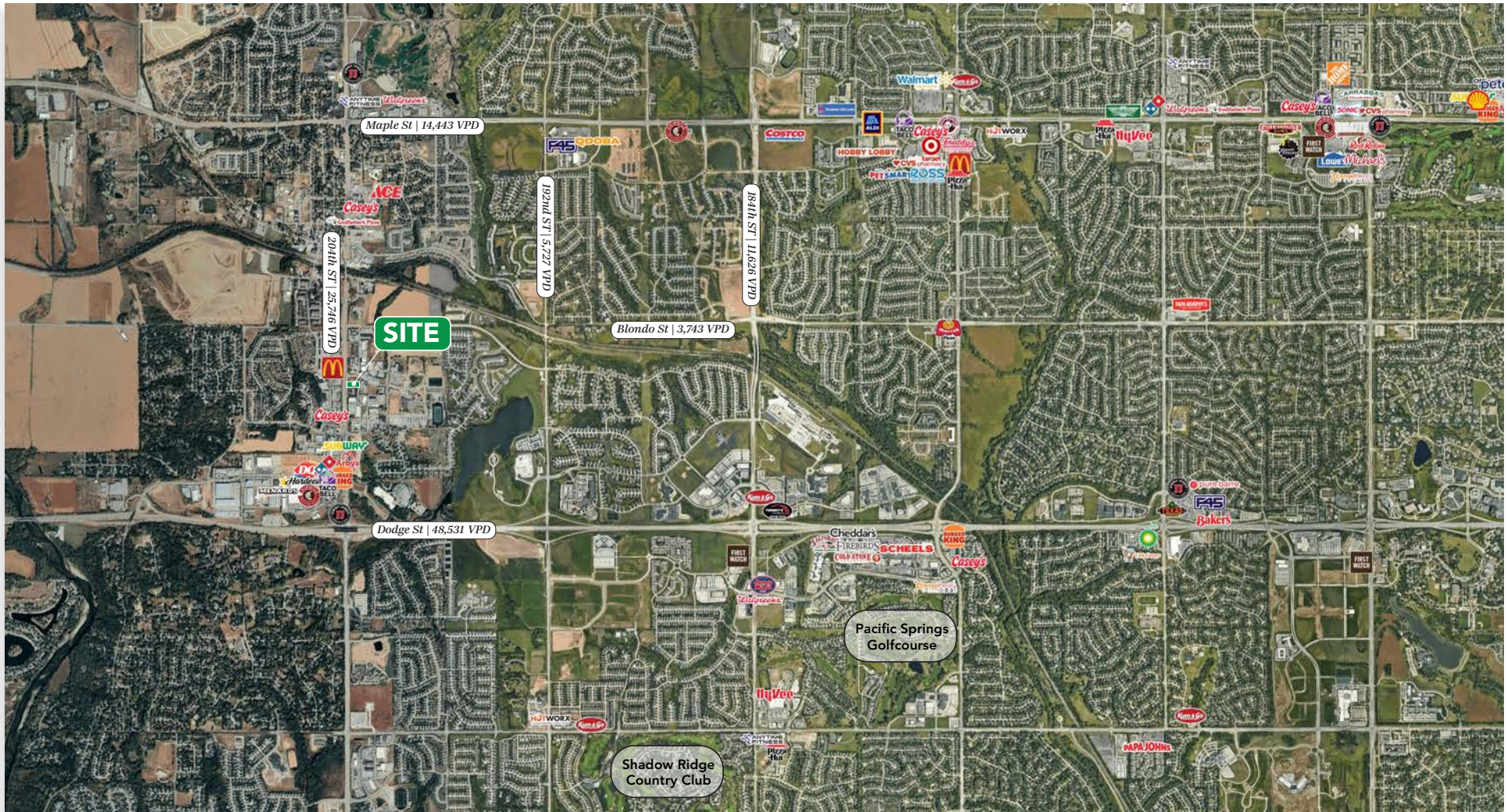
ACCESS Commercial, LLC

LOT | FOR LEASE

204th & Roberts Dr

Elkhorn, NE 68022

MARKET MAP



Contact Listing Agents For More Information:

www.AccessCommercial.com

Amber Olson

amber@accesscommercial.com

402.618.5523



ACCESS Commercial, LLC

LOT | FOR LEASE

204th & Roberts Dr

Elkhorn, NE 68022

LOCAL AERIAL



	Population	Median HH Income	No. of Households	Daytime Population	Employees In The Area	Businesses In The Area
1-mile	5,892	\$133,039	2,504	3,835	2,640	318
3-mile	44,562	\$157,773	16,354	23,141	15,170	1,259
5-mile	116,785	\$138,335	43,370	54,473	30,960	3,257

Contact Listing Agents For More Information:

www.AccessCommercial.com

Amber Olson

amber@accesscommercial.com

402.618.5523



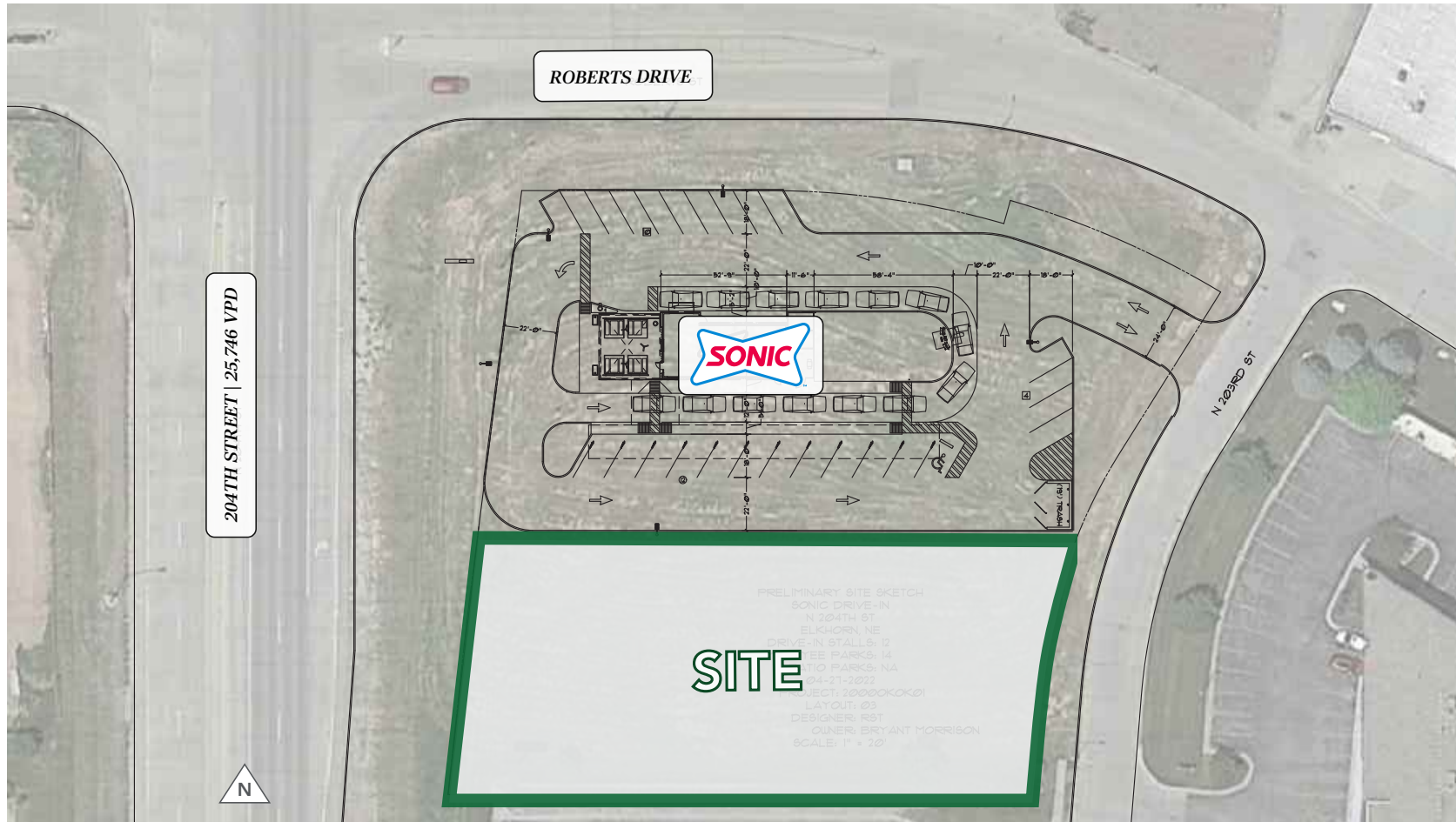
ACCESS Commercial, LLC

LOT | FOR LEASE

204th & Roberts Dr

Elkhorn, NE 68022

SITE PLAN



Contact Listing Agents For More Information:

www.AccessCommercial.com

Amber Olson

amber@accesscommercial.com

402.618.5523



ACCESS Commercial, LLC

LOT | FOR LEASE

204th & Roberts Dr

Elkhorn, NE 68022

PLACER.AI

Placer.ai Software offers transformative benefits for businesses by providing real-time, location-based consumer insights that drive smarter decision-making. With its robust data analytics capabilities, ACCESS uses it to help business owners glean insight into foot traffic, understand customer behavior, and analyze competitive trends with unparalleled accuracy. Whether optimizing site selection, tailoring marketing strategies, or measuring the effectiveness of campaigns, we use Placer.ai to equip businesses with actionable intelligence to stay ahead in dynamic markets. Its intuitive interface and visual reports make complex data accessible, empowering teams to make data-driven decisions that enhance operational efficiency and boost ROI.



UBT

Union Bank & Trust[®]
Sports Complex

21015 Cumberland Dr, Elkhorn NE



VISITS

765,800
in the last 12 months

%

RANKING

99th
percentile nationwide
(Sports Complexes)

Bowlero

20902 Cumberland Dr, Elkhorn NE



VISITS

217,500
in the last 12 months

%

RANKING

89th
percentile nationwide



801 N 204th St, Elkhorn NE



VISITS

126,200
in the last 12 months

%

RANKING

97th
percentile nationwide

SUBWAY

20406 Cumberland Dr, Elkhorn NE



VISITS

196,100
in the last 12 months

%

RANKING

90th
percentile nationwide

Contact Listing Agents For More Information:

www.AccessCommercial.com

Amber Olson

amber@accesscommercial.com
402.618.5523



ACCESS Commercial, LLC

LOT | FOR LEASE

204th & Roberts Dr

Elkhorn, NE 68022

LISTING TEAM



Amber Olson

Senior Broker Associate

Amber brings 20 years of commercial real estate experience to our team at ACCESS. Her role as a Senior Brokerage Associate is primarily focused on shopping center leasing at a national and local level, with over three million square feet represented. Her industry expertise enhances our team through her knowledge of sales, landlord and tenant representation, relationship building, property management, and development.

Amber majored in Business Administration at the University of Nebraska-Lincoln. She is a licensed Real Estate Agent in the State of Nebraska and has been a member of the International Council of Shopping Centers (ICSC) since 2008.

ACCESS is focused on growth opportunities through a select grouping of strategic partnerships. We strive to maximize value for every stakeholder involved in our projects, and have a proven track record of over 400 successfully completed projects across 40 states. We focus on forming deep relationships with our clients and believe durable success in our industry requires the right mixture of talents and virtues, collaboration, and relentless execution.



ACCESS Commercial, LLC

ACCESS Commercial, LLC
10730 Pacific Street, Suite 230
Omaha, NE 68114 | 402.502.1983

All rights reserved. This information has been obtained from sources believed reliable but has not been verified for accuracy or completeness. ACCESS Commercial, LLC, makes no guarantee, representation or warranty and accepts no responsibility or liability as to the accuracy, completeness, or reliability of the information contained herein. You should conduct a careful, independent investigation of the property and verify all information. Any reliance on this information is solely at your own risk. ACCESS and the ACCESS logo are service marks of ACCESS Commercial, LLC. All other marks displayed on this document are the property of their respective owners, and the use of such marks does not imply any affiliation with or endorsement of ACCESS. Photos herein are the property of their respective owners. Use of these images without the express written consent of the owner is prohibited. (021523_JR)

WWW.ACCESSCOMMERCIAL.COM



facebook.com/accesscommercial



instagram.com/accessretail