

# OFFICE SPACE - FOR LEASE

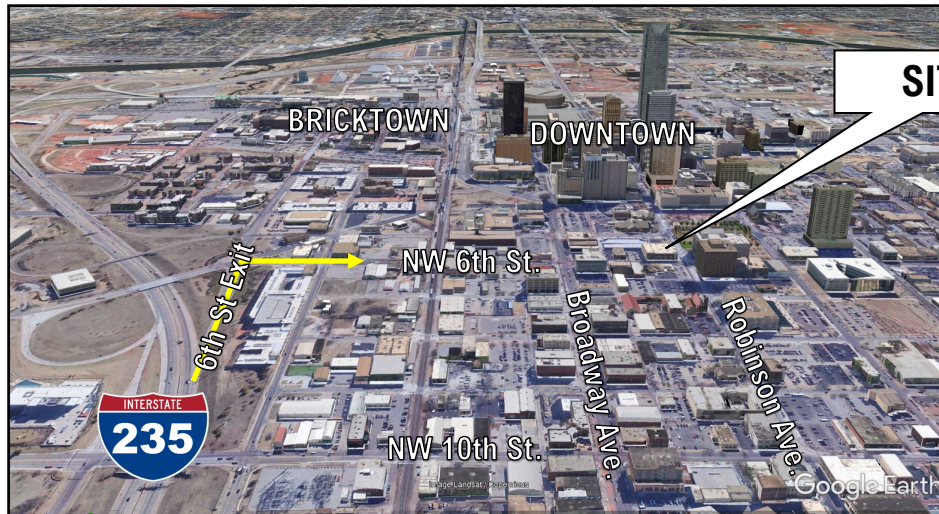
## Robinson Executive Building

620 N Robinson, Oklahoma City, OK 73102

Available: 2,222 SF

### PROPERTY HIGHLIGHTS

- 2nd floor suite with 5 standard offices, large conference room, kitchenette, and reception/lobby area.
- Easy access from I-235 via 6th St/Harrison exits
- Sits at corner of NW 6th St & Robinson Ave; across the street from OKC National Memorial & Museum
- Access to parking lot with 42+ spaces and some covered parking
- Walking distance to the courthouse, Downtown Core, Leadership Square, Automobile Alley, etc.; Situated on OKC streetcar route



SITE

### PROPERTY INFORMATION

**Space Available for Lease:** 2,222 SF suite

**Zoning:** DBD (Downtown Business District)

**Base Rent + Estimated Operating Expenses:** \$23 per square foot, per year (parking and utilities included)



FOR MORE INFORMATION:

Troy Humphrey thumphrey@LRCRE.com (405) 219-7500

114 N.W. 6<sup>th</sup> Street, Suite 206  
Oklahoma City, OK 73102  
Office: 405.231.5700  
Facsimile: 405.231.5701  
www.LRCRE.com

The information above is believed to be accurate and reliable but is not warranted and may change without notice. Land Run Commercial Real Estate Advisors, LLC makes no guarantees, warranties or representations about the property and recommends tenants independent investigation as to the accuracy thereof.

# OFFICE SPACE - FOR LEASE

## Robinson Executive Building

620 N Robinson, Oklahoma City, OK 73102

Available: 2,222 SF

Robinson Executive Building



FOR MORE INFORMATION:

Troy Humphrey thumphrey@LRCRE.com (405) 219-7500

114 N.W. 6<sup>th</sup> Street, Suite 206  
Oklahoma City, OK 73102  
Office: 405.231.5700  
Facsimile: 405.231.5701  
www.LRCRE.com

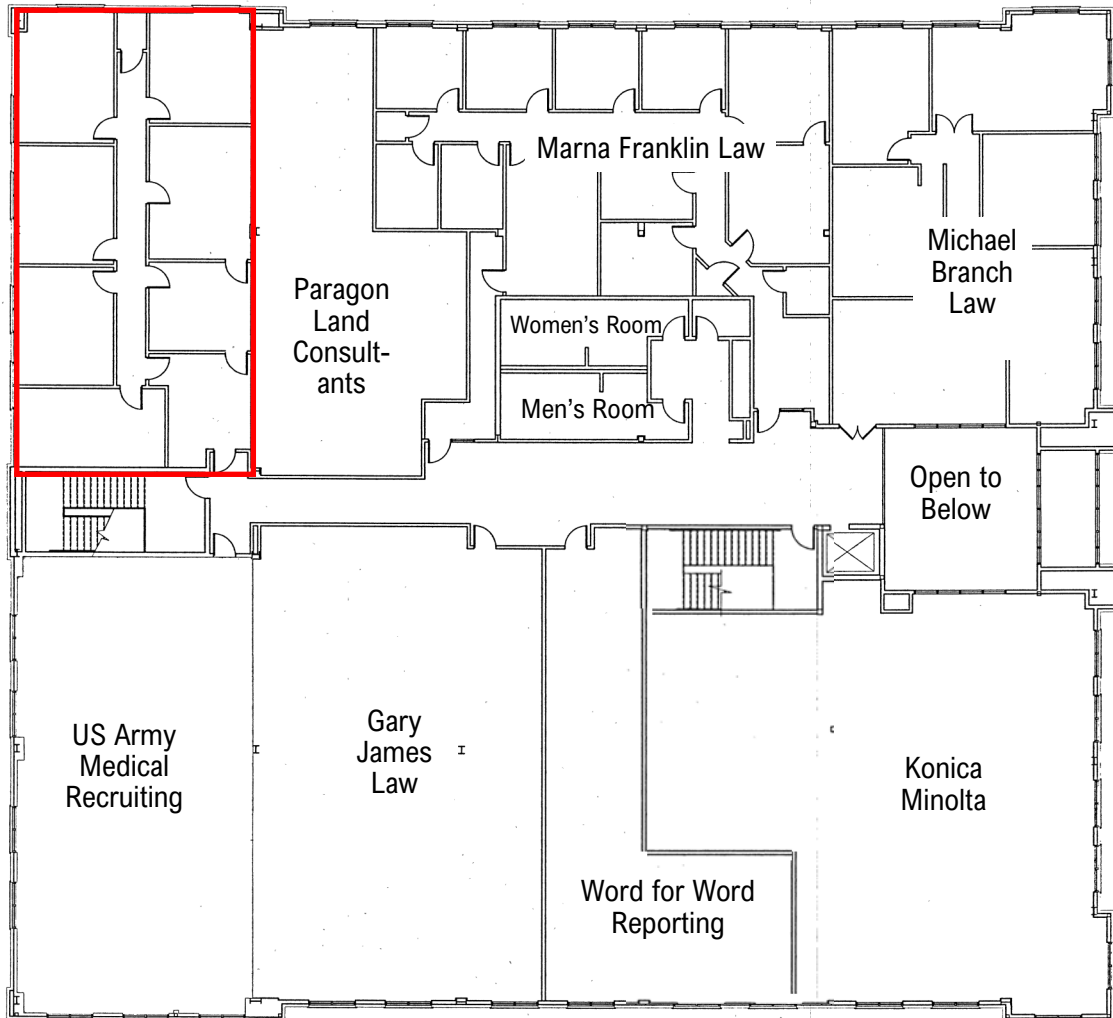
The information above is believed to be accurate and reliable but is not warranted and may change without notice. Land Run Commercial Real Estate Advisors, LLC makes no guarantees, warranties or representations about the property and recommends tenants independent investigation as to the accuracy thereof.

# OFFICE SPACE - FOR LEASE

## Robinson Executive Building

620 N Robinson, Oklahoma City, OK 73102

**Available: 2,222 SF**



### RED SUITE DETAILS

- Corner Office
- 2,222 SF
- 2nd floor office suite
- Conference Room
- Kitchenette
- 5 Offices

### SECURED ACCESS TO BUILDING 24/7



FOR MORE INFORMATION:

Troy Humphrey thumphrey@LRCRE.com (405) 219-7500

114 N.W. 6<sup>th</sup> Street, Suite 206  
Oklahoma City, OK 73102  
Office: 405.231.5700  
Facsimile: 405.231.5701  
www.LRCRE.com

The information above is believed to be accurate and reliable but is not warranted and may change without notice. Land Run Commercial Real Estate Advisors, LLC makes no guarantees, warranties or representations about the property and recommends tenants independent investigation as to the accuracy thereof.

# OFFICE SPACE - FOR LEASE

## Robinson Executive Building

620 N Robinson, Oklahoma City, OK 73102

Available: 2,222 SF

### Common Areas



FOR MORE INFORMATION:

Troy Humphrey thumphrey@LRCRE.com (405) 219-7500

114 N.W. 6<sup>th</sup> Street, Suite 206  
Oklahoma City, OK 73102  
Office: 405.231.5700  
Facsimile: 405.231.5701  
www.LRCRE.com

The information above is believed to be accurate and reliable but is not warranted and may change without notice. Land Run Commercial Real Estate Advisors, LLC makes no guarantees, warranties or representations about the property and recommends tenants independent investigation as to the accuracy thereof.

# OFFICE SPACE - FOR LEASE

## Robinson Executive Building

620 N Robinson, Oklahoma City, OK 73102

Available: 2,222 SF



FOR MORE INFORMATION:

Troy Humphrey thumphrey@LRCRE.com (405) 219-7500

114 N.W. 6<sup>th</sup> Street, Suite 206  
Oklahoma City, OK 73102  
Office: 405.231.5700  
Facsimile: 405.231.5701  
www.LRCRE.com

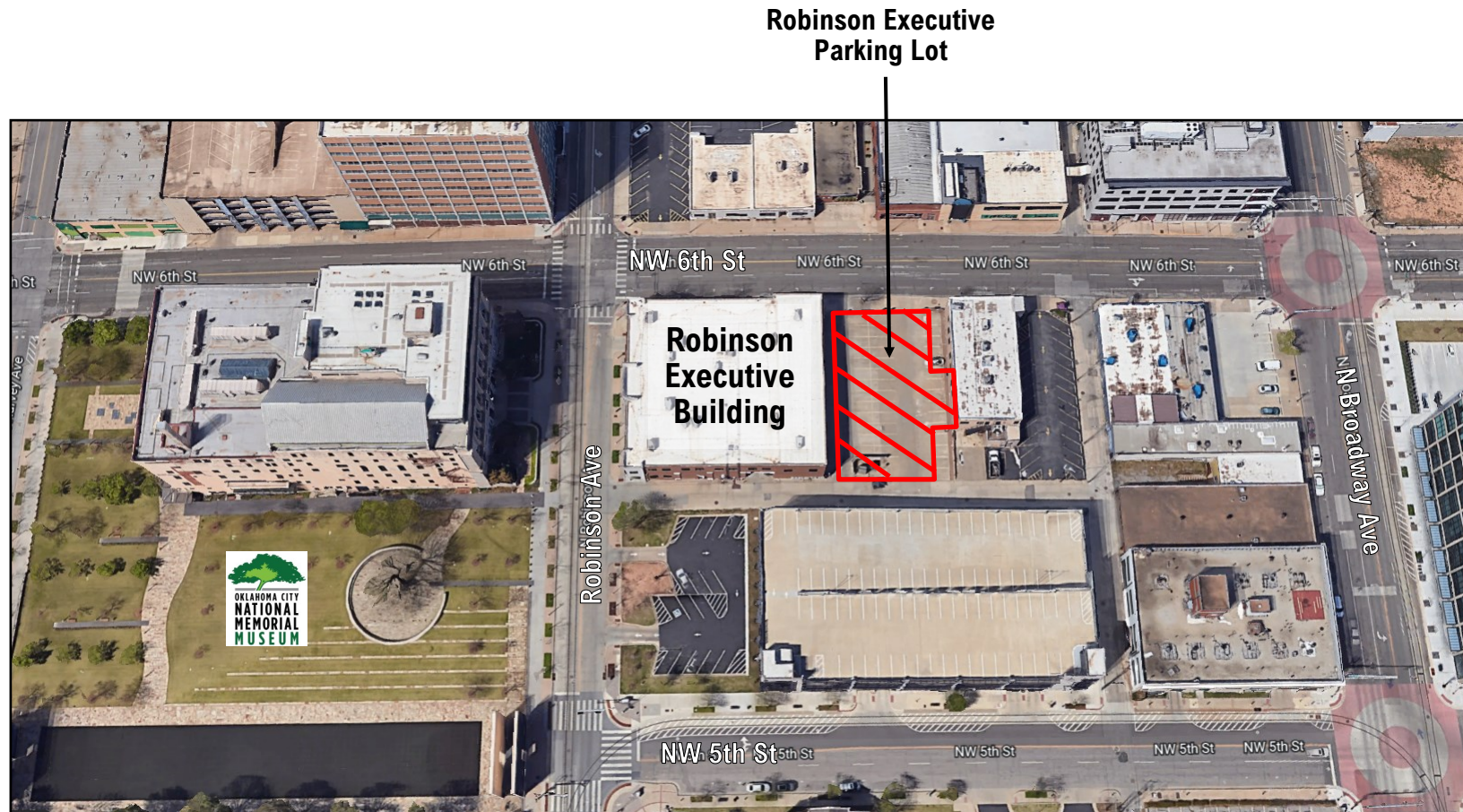
The information above is believed to be accurate and reliable but is not warranted and may change without notice. Land Run Commercial Real Estate Advisors, LLC makes no guarantees, warranties or representations about the property and recommends tenants independent investigation as to the accuracy thereof.

# OFFICE SPACE - FOR LEASE

## Robinson Executive Building

620 N Robinson, Oklahoma City, OK 73102

Available: 2,222 SF



FOR MORE INFORMATION:

Troy Humphrey thumphrey@LRCRE.com (405) 219-7500

114 N.W. 6<sup>th</sup> Street, Suite 206  
Oklahoma City, OK 73102  
Office: 405.231.5700  
Facsimile: 405.231.5701  
www.LRCRE.com

The information above is believed to be accurate and reliable but is not warranted and may change without notice. Land Run Commercial Real Estate Advisors, LLC makes no guarantees, warranties or representations about the property and recommends tenants independent investigation as to the accuracy thereof.