

MARSHALL, MN COMMERCE PARK



MARSHALL



FEATURES

- 136 shovel-ready acres
- Subdivide to 5 acre
- Currently Zoned I-2 General Industrial
- Located in Opportunity Zone
- On-site storm water retention may not be required

UTILITIES

- Electric and Water - Marshall Municipal Utilities
- Underground Three-phase electric service
- Voltage: Primary - 13.8/7.97 kv
 - Secondary 120/208 or 277/480 V
- Substation within a half mile
 - Dual feed potential | No maximum size KM/MW load
- Broadband - Vast Broadband
- Natural Gas - Great Plains Natural Gas

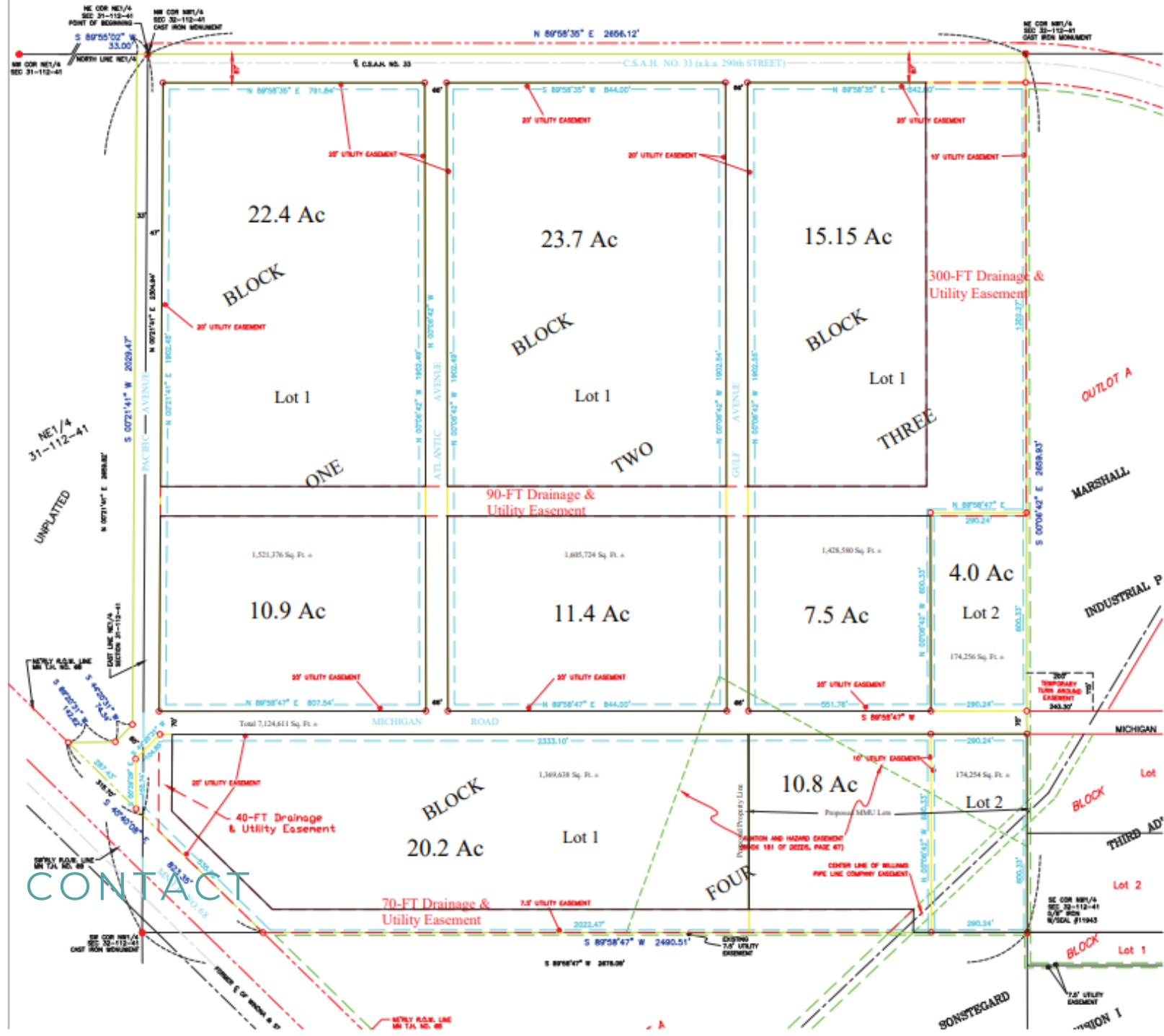
CONTACT

Marshall EDA

Lauren Deutz
507-337-9013
lauren.deutz@ci.marshall.mn.us
344 West Main Street
Marshall, MN 56258
ci.marshall.mn.us



COMMERCE PARK CONCEPTUAL LOT SIZES



We are flexible to fit your parcel size or subdivision requests.
 507.337.9013 | ci.marshall.mn.us | lauren.deutz@ci.marshall.mn.us

