

FOR SALE

15239 Russell Ave
White Rock, BC

Turnkey Retail Space

- » Prime Retail Node
- » Four Assigned Parking Stalls
- » High Exposure
- » High Traffic Area

UPDESH GREWAL
Personal Real Estate Corporation

JAMIE SCHREDER
Personal Real Estate Corporation

MAGNUS HEANEY
Commercial REALTOR®



PROPERTY INFO

AREA
Total: 1,184 ft²

STRATA FEE
\$813.18 (per month)

PROPERTY TAX
\$10,136.37 (2025)

ASKING PRICE
\$1,324,000
(\$1,118.24/ sq ft)

ZONING

CR-1 (Town Centre Area Commercial)
Intended to accommodate general retail services, along with medical or dental clinics



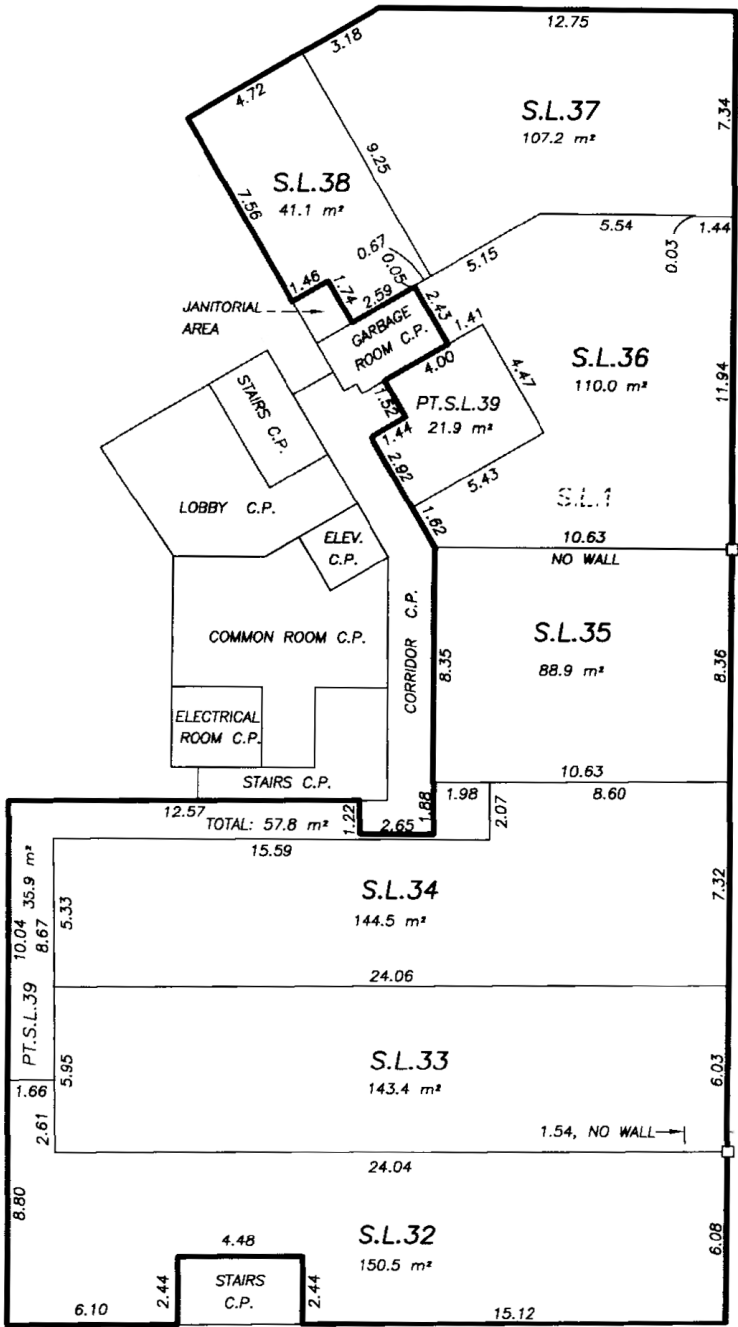
15239 Russell Ave, White Rock, BC

A rare opportunity to own a move-in-ready retail strata lot in a prime Uptown White Rock location. This property offers unparalleled exposure with approximately 39 feet of linear frontage, benefiting from significant foot traffic and excellent vehicular visibility.

Its south-facing orientation and expansive windows fill the space with natural light, creating a bright and inviting atmosphere for customers. The robust infrastructure, including existing plumbing and a 3-phase, 100 amp, 240 volt power capacity, makes the unit suitable for a wide variety of retail uses. The 4 assigned parking stalls include 2 underground gated stalls, ideal for employees, and 2 open air stalls, for easy customer access. Ample street parking and transit are also available in this highly walkable neighborhood.

This is an ideal choice for businesses seeking to establish a strong presence in one of White Rock's most dynamic commercial areas.

- » Turnkey Retail Space
- » Prime Retail Node
- » Ample Street Parking



FLOORPLAN & MEASUREMENTS

Please note that all measurements are approximate and should be verified by the tenant if deemed important to them.



DRIVE TIMES

CLOVERDALE	20 MINS
LANGLEY	30 MINS
SURREY	35 MINS
DELTA	23 MINS
BURNABY	45 MINS
MAPLE RIDGE	48 MINS
ABBOTSFORD	53 MINS

JAMIE SCHREDER
Personal Real Estate Corporation

UPDESH GREWAL
Personal Real Estate Corporation

MAGNUS HEANEY
Commercial REALTOR®

LORI NICOL
Unlicensed Assistant



604-530-0231

COMMERCIAL@SCHREDERS.CA

WWW.SCHREDERS.CA