











**Don't miss out on these great pad opportunities!**

**Shops A**    ± 1,200 SF    LEASE NEG.    See Page 3

P1/Lot 2	± 1.04 AC		Opening Soon
P2/Lot 3	± 0.87 AC		Signed Lease
P3/Lot 4	± 1.37 AC		Signed Lease
P4/Lot 5	± 2.75 AC		Now Open!
P5/Lot 6	± 1.58 AC		Signed Lease

P6/Lot 7    ± 1.38 AC        Signed Lease

P7/Lot 8    ± 1.75 AC        Now Open!

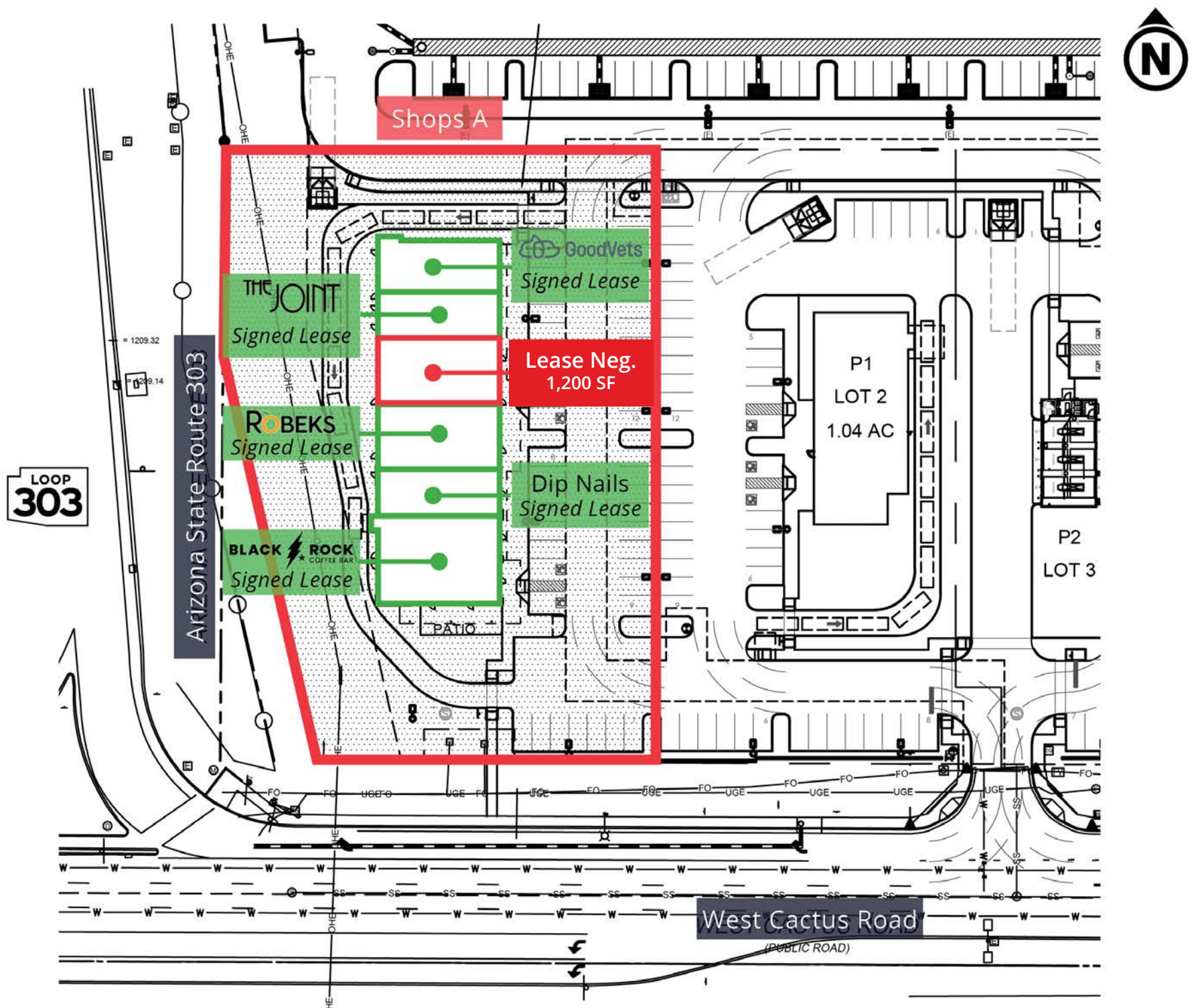
**P8/Lot 9    ± 1.29 AC    AVAILABLE**

P9/Lot 10    ± 1.06 AC        Closed Escrow

P10/Lot 11    ± 1.1 AC        Closed Escrow

P11/Lot 12    ± 1.5 AC        Closed Escrow











# Regional Northwest Valley / Surprise

**Active Subdivisions**  
30,075 Units

**Completed Subdivisions**  
14,474 Units



## Demographics - 5 miles

- Population: **161,555**
- Median Household Income: **\$102,118**
- Median Age: **40.4**
- Daytime Population: **133,880**



## Education - 5 miles

- College-Educated: **26.0%**
- Associate Degree: **12.0%**
- Bachelor Degree: **20.0%**
- Graduate Degree: **12%**



## Workforce - 5 miles

- **13.1%** Management, business, science, and arts occupations
- **27.8%** Sales and office occupations
- **52.9%** Service occupations
- **5.6%** Production, transportation, and material moving occupations

Source - Esri & Data Axle (2025)

## For more information:



### Ed Beeh

EVP & Managing Principal  
602.682.6040 | ed.beeh@srsre.com

### Chuck Gibson

SVP & Principal  
602.682.6035 | chuck.gibson@srsre.com

### Robbie Petty

EVP & Managing Principal  
602.682.6025 | robbie.petty@srsre.com