

BUCHANAN CROSSINGS

3110 Buchanan Rd, Antioch, CA 94509

FOR LEASE



OFFERING SUMMARY

| | |
|----------------|------------------------|
| Lease Rate: | \$3.00 per month (NNN) |
| Building Size: | 5,585 SF |
| Available SF: | 2,145 - 2,263 SF |
| Lot Size: | 0.86 Acres |
| Year Built: | 2015 |

PROPERTY HIGHLIGHTS

- Anchored by Grocery Outlet
- 2 Spaces Available (may be combined):
- 2263 sf / 2145 sf



JOE MUNOZ

408.833.8505
joe@centersdynamic.com

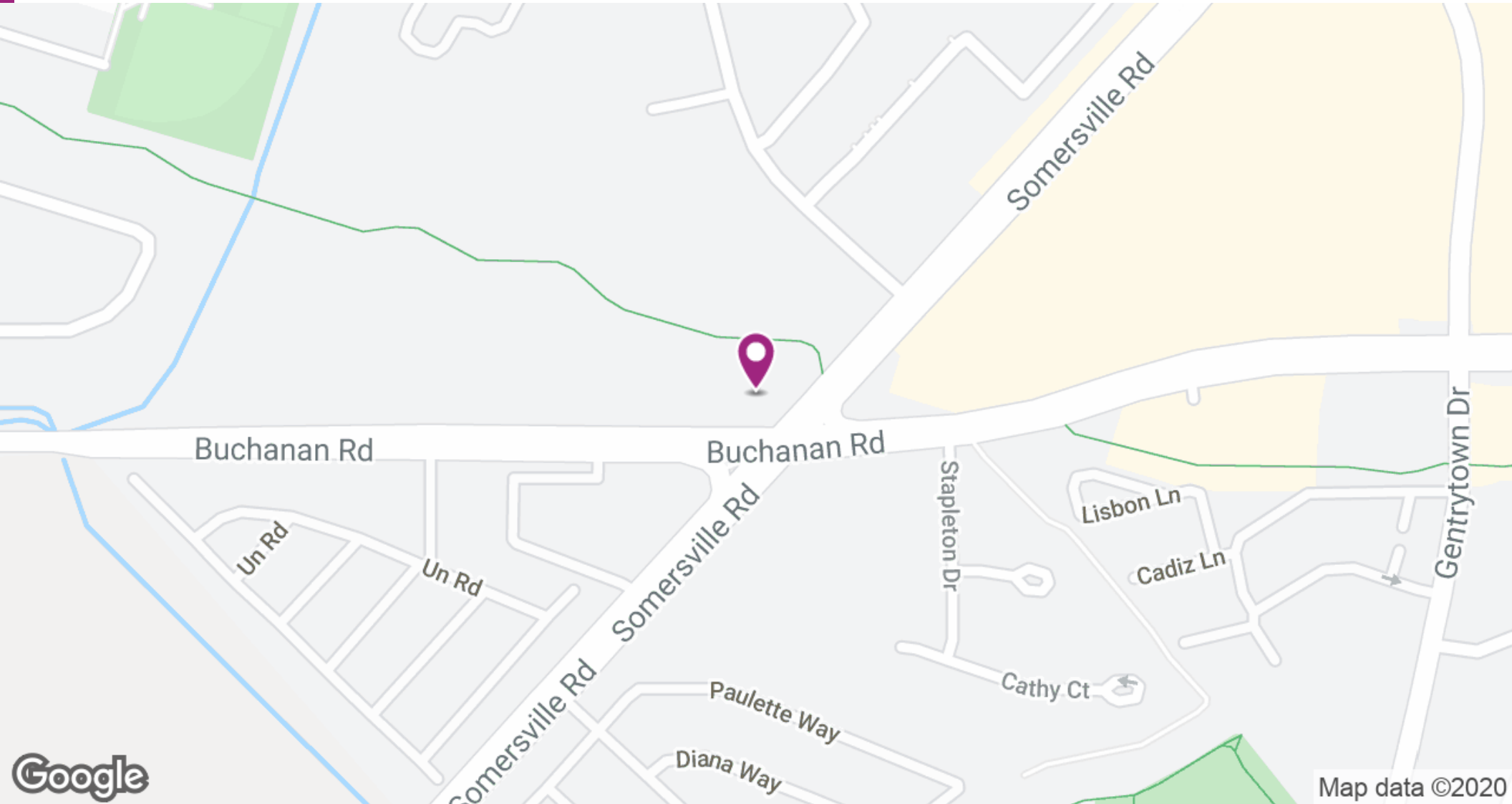
Centers Dynamic Partners, Inc. | 303 Twin Dolphin Drive, Suite 600, Redwood Shores, CA 94065 | +16502607660 X3 | centersdynamic.com



BUCHANAN CROSSINGS

3110 Buchanan Rd, Antioch, CA 94509

F O R L E A S E



JOE MUNOZ

408.833.8505
joe@centersdynamic.com

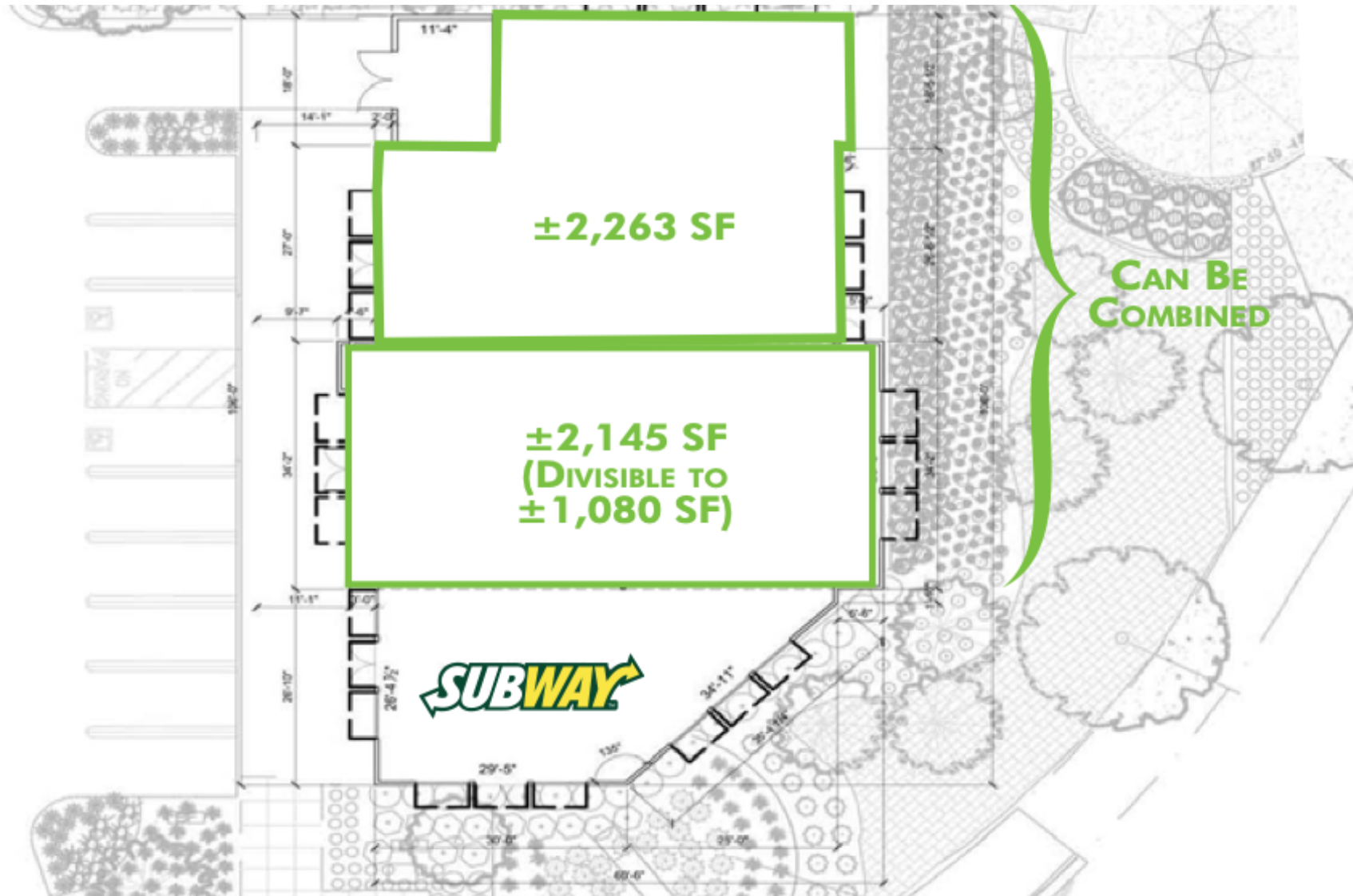
Centers Dynamic Partners, Inc. | 303 Twin Dolphin Drive, Suite 600, Redwood Shores, CA 94065 | +16502607660 X3 | centersdynamic.com



BUCHANAN CROSSINGS

3110 Buchanan Rd, Antioch, CA 94509

FOR LEASE



JOE MUNOZ
408.833.8505
joe@centersdynamic.com

Centers Dynamic Partners, Inc. | 303 Twin Dolphin Drive, Suite 600, Redwood Shores, CA 94065 | +16502607660 X3 | centersdynamic.com



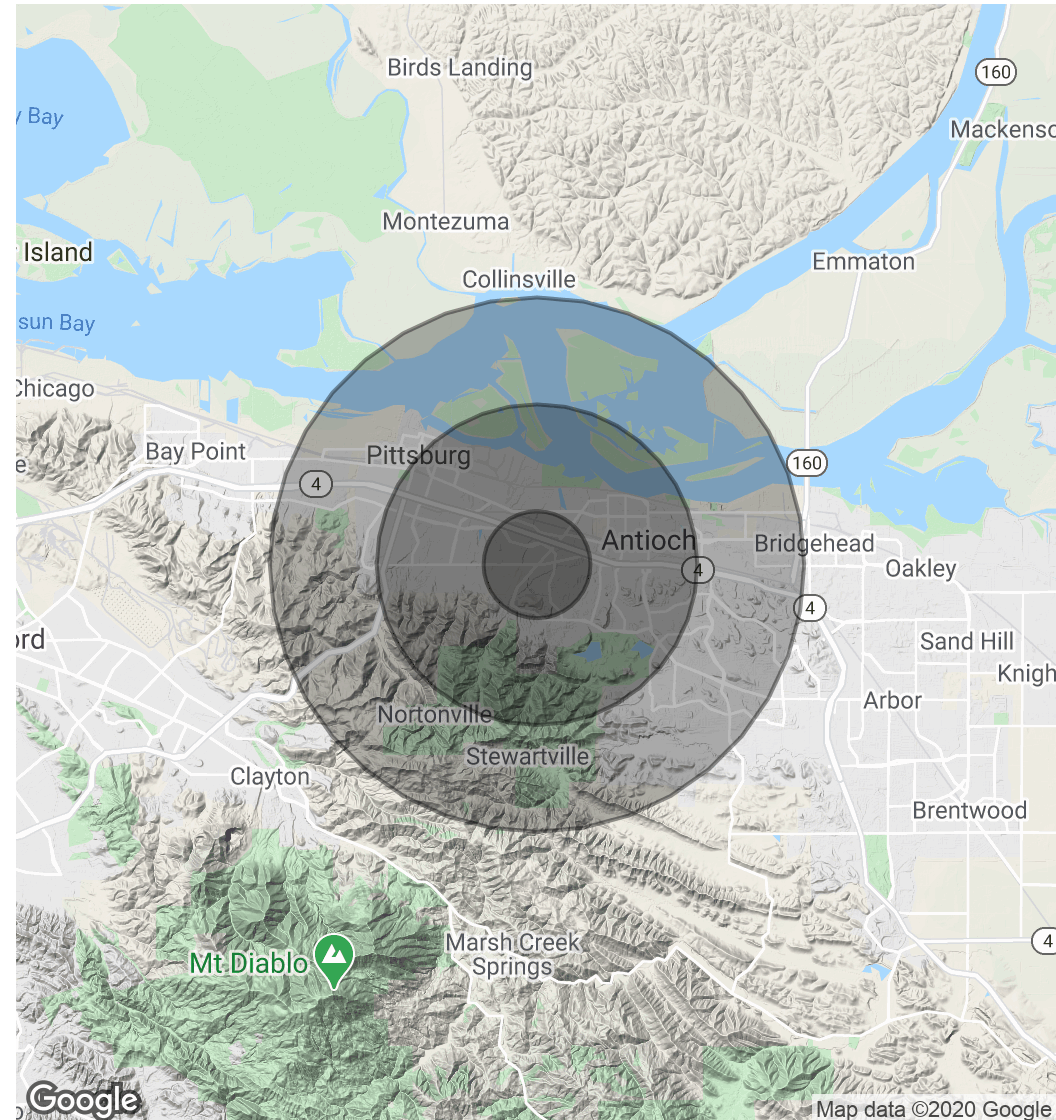
BUCHANAN CROSSINGS

3110 Buchanan Rd, Antioch, CA 94509

FOR LEASE

| POPULATION | 1 MILE | 3 MILES | 5 MILES |
|----------------------|-----------|-----------|-----------|
| Total Population | 14,351 | 68,555 | 143,073 |
| Average age | 29.8 | 32.3 | 32.9 |
| Average age (Male) | 29.4 | 31.7 | 31.9 |
| Average age (Female) | 30.4 | 33.0 | 33.5 |
| HOUSEHOLDS & INCOME | 1 MILE | 3 MILES | 5 MILES |
| Total households | 5,039 | 23,259 | 45,717 |
| # of persons per HH | 2.8 | 2.9 | 3.1 |
| Average HH income | \$56,000 | \$62,342 | \$69,866 |
| Average house value | \$300,791 | \$314,865 | \$394,297 |

* Demographic data derived from 2010 US Census



JOE MUNOZ

408.833.8505
joe@centersdynamic.com

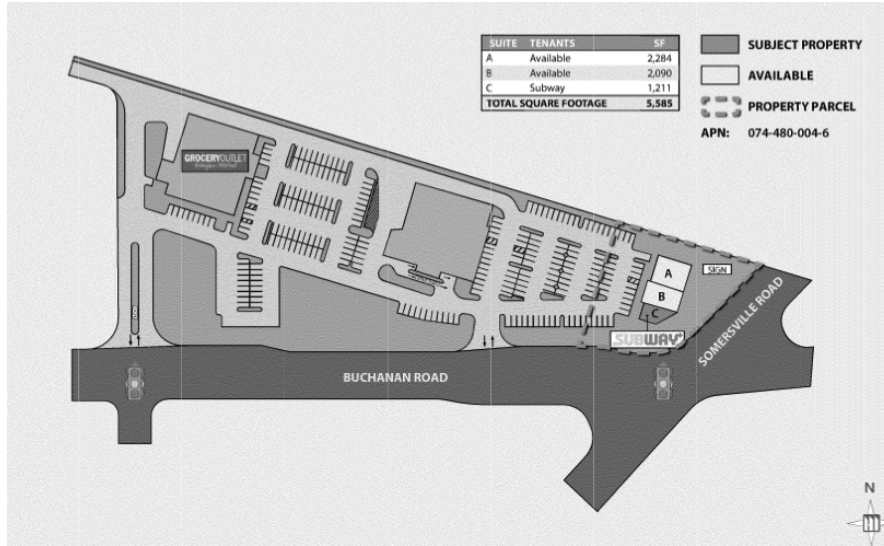
Centers Dynamic Partners, Inc. | 303 Twin Dolphin Drive, Suite 600, Redwood Shores, CA 94065 | +16502607660 X3 | centersdynamic.com



BUCHANAN CROSSINGS

3110 Buchanan Rd, Antioch, CA 94509

FOR LEASE



PROPERTY DESCRIPTION

Retail spaces available situated on busy intersection.
Anchored by Grocery Outlet

PROPERTY HIGHLIGHTS

- 2 Spaces Available (may be combined):
- 2263 sf
- 2145 sf

OFFERING SUMMARY

| | |
|-------------------------|------------------------|
| Lease Rate: | \$2.75 per month (NNN) |
| Number of Units: | 3 |
| Available SF: | 2,145 - 2,263 SF |
| Lot Size: | 0.86 Acres |
| Building Size: | 5,585 SF |

DEMOGRAPHICS

| | 1 MILE | 3 MILES | 5 MILES |
|-------------------------|--------|---------|---------|
| Total Households | 5,039 | 23,259 | 45,717 |

JOE MUNOZ

408.833.8505
joe@centersdynamic.com

