

GROUND FLOOR RETAIL FOR LEASE IN RITTENHOUSE

1931 CHESTNUT STREET

Rittenhouse Square, Philadelphia 19103



\$4,500/mo

- » 700 +/- SF ground floor retail space
- » 20' of frontage on Chestnut Street Business Corridor
- » Zoning CMX-4
- » High Traffic block in Rittenhouse
- » Located steps from Rittenhouse Square, and close to the Market Street business district, with several recently completed and under construction high-density residential development projects. The neighborhood is Center City's most expensive and exclusive. With an abundance of high-end luxury apartments, some of the best fine dining in the city, and an expansive amount of luxury retail shopping.



Walk Score®



Walker's Paradise Rider's Paradise Biker's Paradise

NEIGHBORS INCLUDE: **TREK** **DUNKIN'** **TARGET**



DEMOGRAPHICS

Residents within 1 mile	92,786
Average household income	\$83,875
Est. daytime population	184,026

JOE SCARPONE 267.546.1721 ■ jscarpone@mpnrealty.com

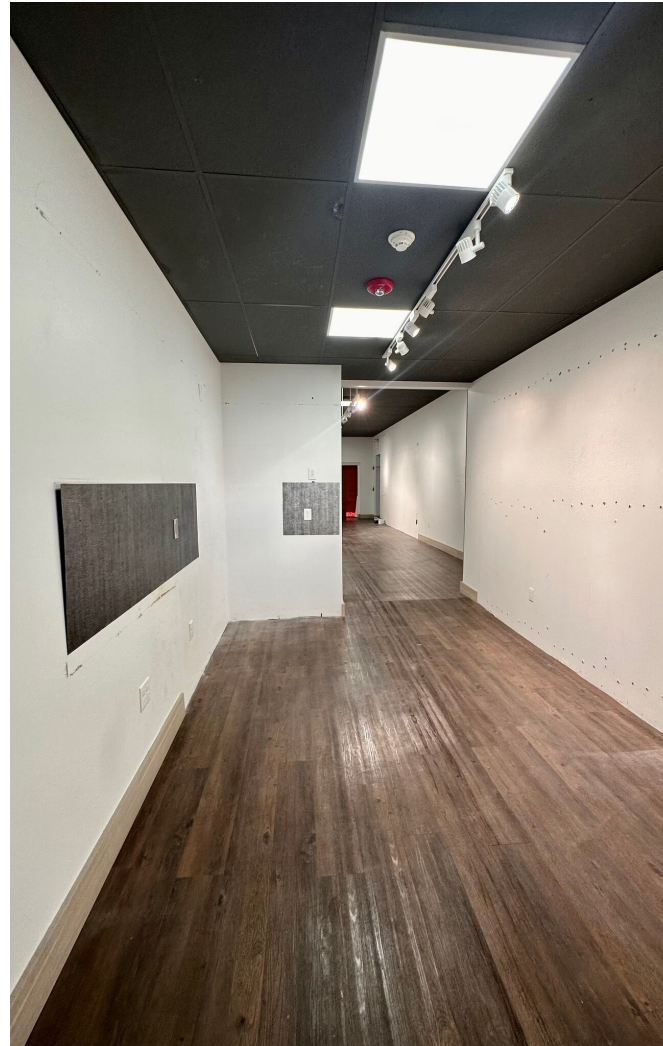
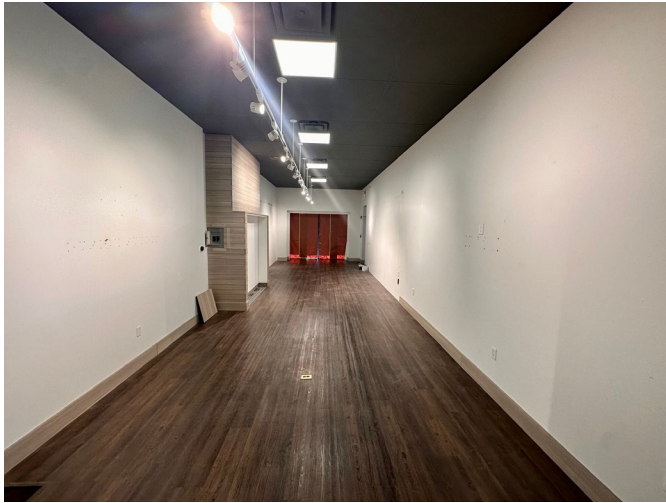
VERONICA BLUM 267.238.1728 ■ vblum@mpnrealty.com

Information concerning this offer is from sources deemed reliable and no warranty is made as to the accuracy thereof. The offering is submitted subject to errors, omissions, change in price, or other conditions, prior sale or Lease, or withdrawal without notice. The prospective tenant should carefully verify to his/her own satisfaction all information contained herein.

1931 CHESTNUT STREET

Rittenhouse Square, Philadelphia 19103

Property Photos



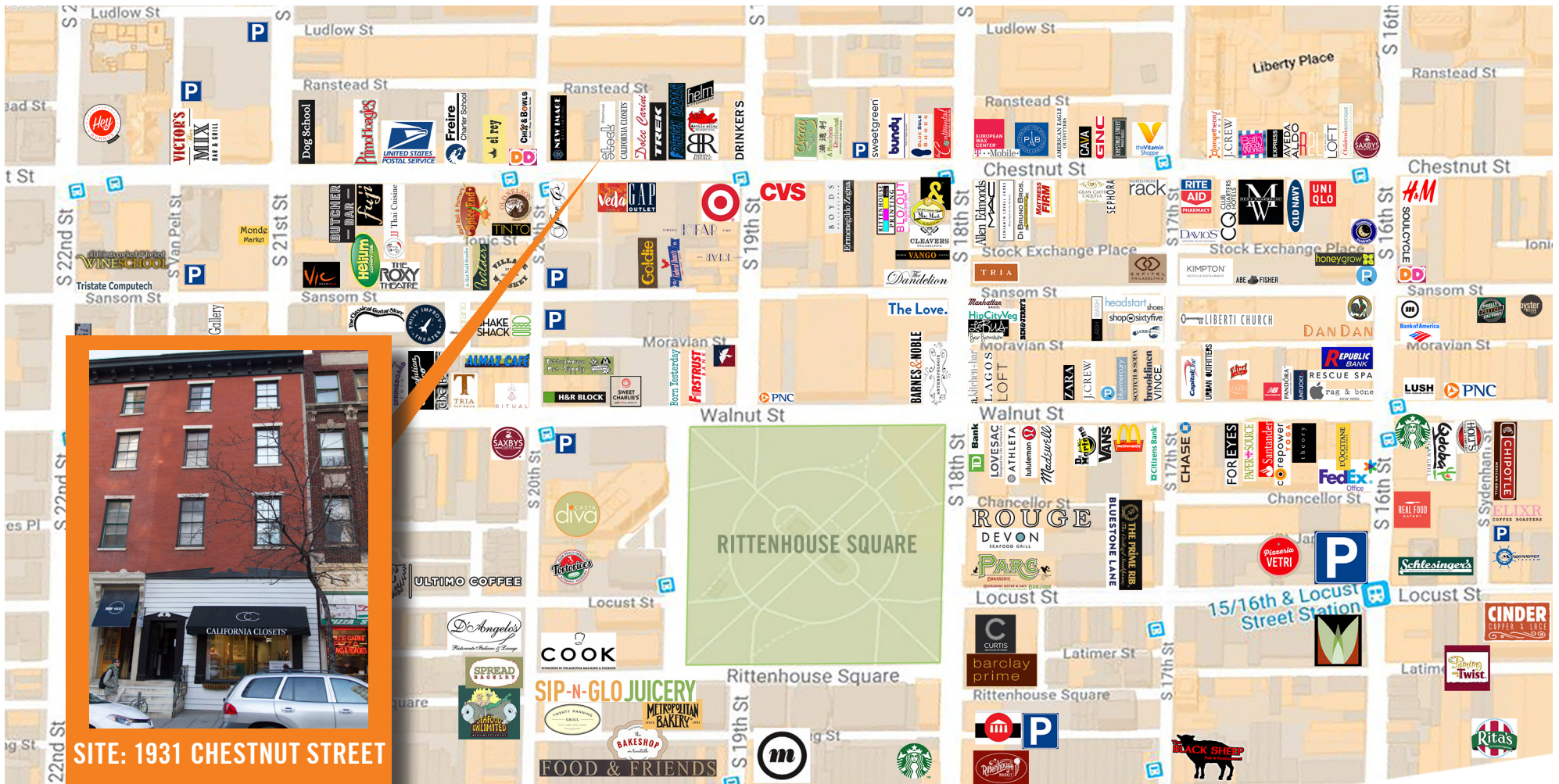
JOE SCARPONE 267.546.1721 ■ jscarpone@mpnrealty.com

VERONICA BLUM 267.238.1728 ■ vblum@mpnrealty.com

1931 CHESTNUT STREET

Rittenhouse Square, Philadelphia 19103

Retail Map



SITE: 1931 CHESTNUT STREET

JOE SCARPONE 267.546.1721 ■ jscarpone@mpnrealty.com

VERONICA BLUM 267.238.1728 ■ vblum@mpnrealty.com