

OWNED & MANAGED BY:



Suite C-2

# HARTSFIELD INTERNATIONAL COMMERCE CENTER

4820 CLARK HOWELL HIGHWAY, BUILDING C | ATLANTA, GA 30349

LISTED WITH:



CONTACT:

MICHAEL SUTTER, SIOR  
msutter@lee-associates.com  
404.442.2804

RICK TUMLIN, CCIM, SIOR  
rtumlin@lee-associates.com  
404.442.2816

LEE & ASSOCIATES - ATLANTA | 404.442.2810 | 3500 LENOX ROAD, SUITE 1600, ATLANTA, GA 30326 | [WWW.LEE-ASSOCIATES.COM/ATLANTA](http://WWW.LEE-ASSOCIATES.COM/ATLANTA)



## BUILDING FEATURES

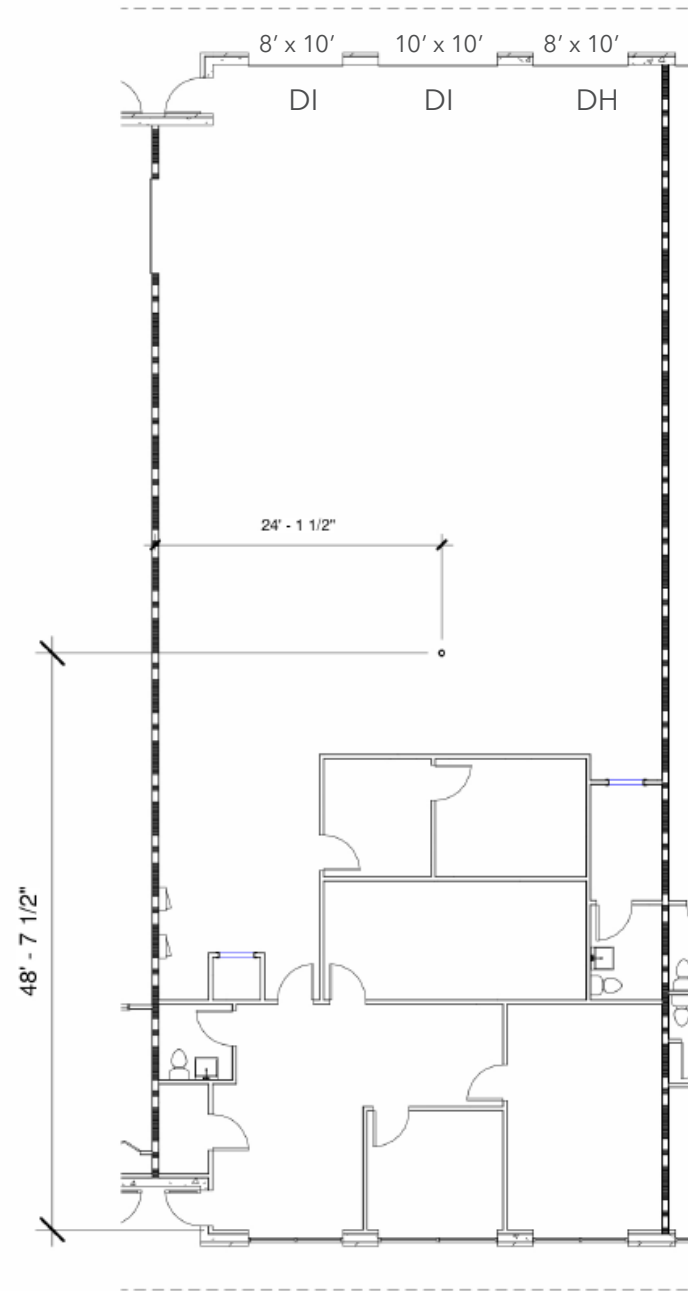
- Building Size: 35,673 SF
- 4,677 SF available
- 1,662 SF office
- 18' clear height
- $\pm 24'$ W x  $\pm 48'$ D column spacing
- $\pm 96'$  building depth
- 1 Dock High Door
- 2 Ramped Drive In Doors
- LED Lighting in warehouse area (to be completed)
- New office make ready (to be completed)
- Immediate access to I-285, I-75, and Hartsfield-Jackson Atlanta International Airport
- Clayton County is a Tier 1 county that allows up to \$3,500 job tax credit per new job created ([www.investclayton.com](http://www.investclayton.com))

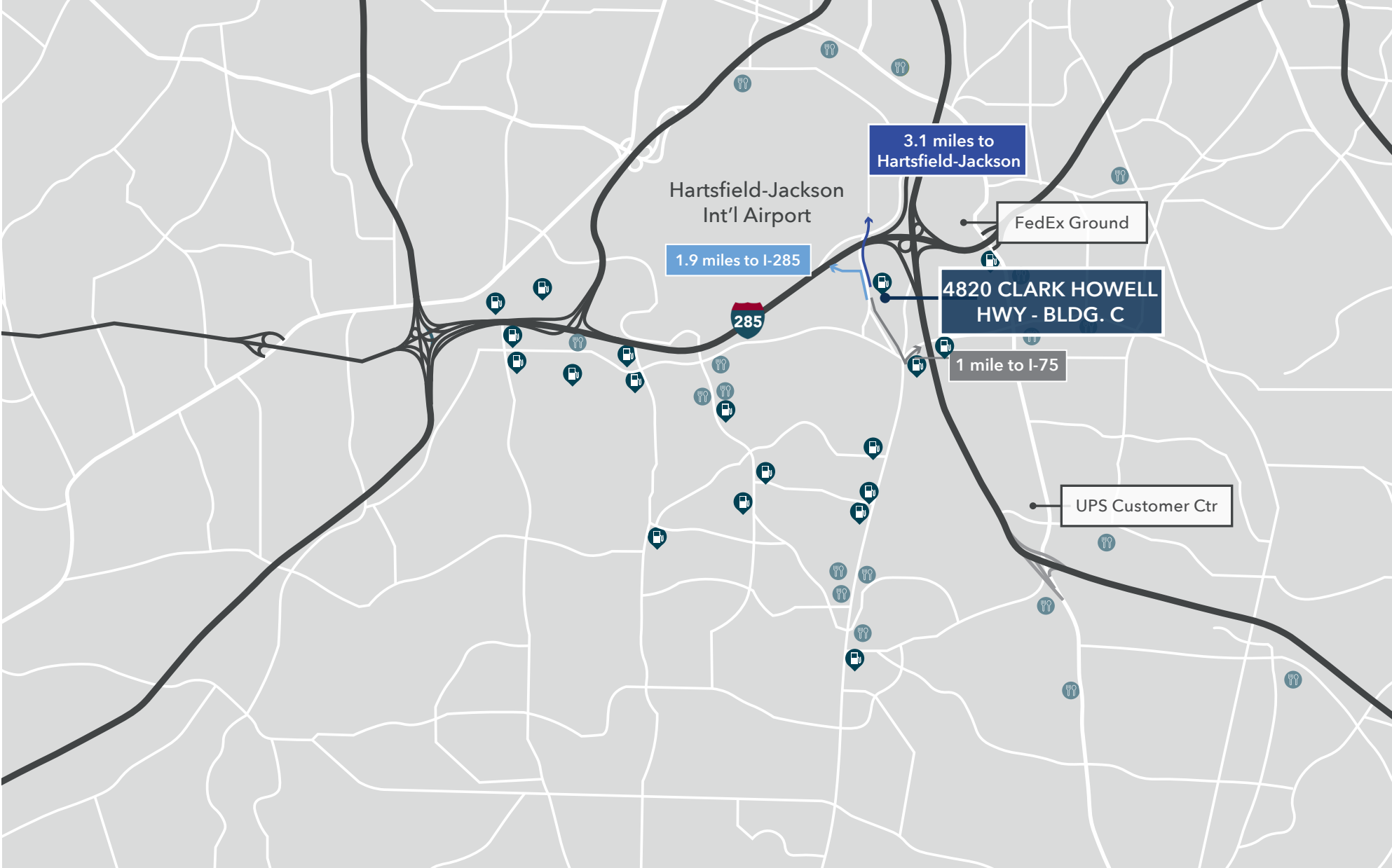




# Suite C-2

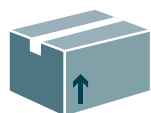
- 4,677 SF total
- 1,662 SF office
- 2,985 SF warehouse





## INTERSTATE ACCESS

I-75 - under 1 mile  
I-285 - under 1 mile



## PARCEL HUBS

FedEx Ground - 2.5 miles  
UPS Customer Center - 2.9 miles



## AIRPORTS

Hartsfield Jackson Int'l Airport - 3.1 miles



## PORTS

Savannah Port - 239 miles