



4200 S Grand Blvd

St. Louis, Missouri | 63111



FOR LEASE

+/- 3100 Turnkey
Restaurant Space w/
lower level

LEASE RATE: \$20.00/SF +
NNN

- Zoned F Neighborhood Commercial
- Off street parking
- Located next to Ted Drewes Frozen Custard
- Includes full kitchen fixtures including pizza oven
- Lower level includes :
 - Beer walk-in & keg lift
 - Management office,
 - Laundry & lockers
 - Additional storage
- Complimentary tenant on property
- Outside patio area

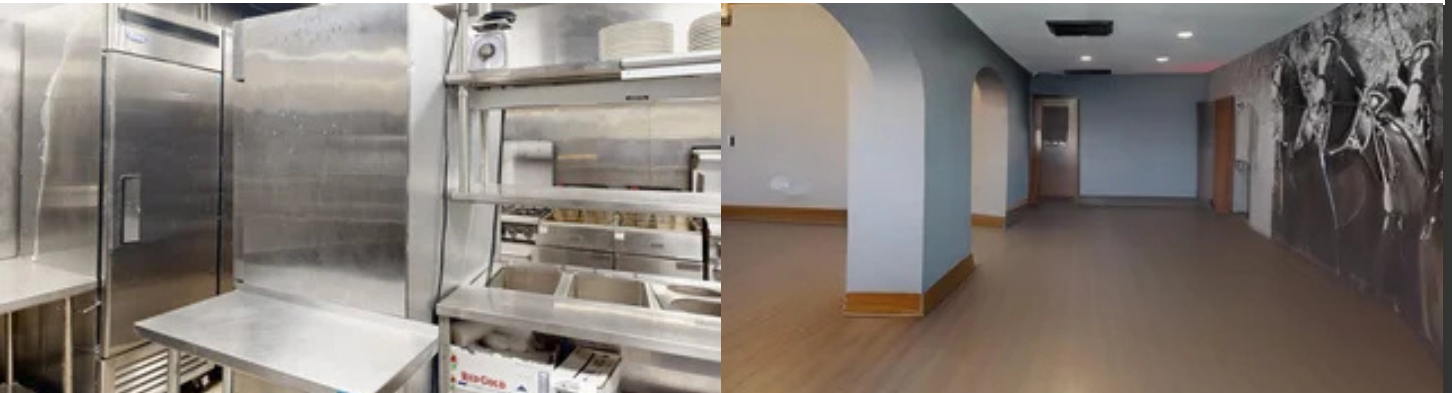


JUSTIN STRÖHM, BROKER
(314) 814-6178
Justin.Strohm@CircaSTL.com

CIRCA PROPERTIES
(314) 352-5200
3353 ROGER PLACE ST. LOUIS, 63116
WWW.CIRCASTL.COM



circa PROPERTIES
THE ART OF PARTNERSHIP



No expressed or implied warranty or representation is made as to the accuracy of the information contained herein. This property is submitted subject to errors, omissions, change of price, withdrawal without notice, prior lease or sale and any other listing conditions imposed by the principals.