

6553 East Baywood Avenue, Mesa

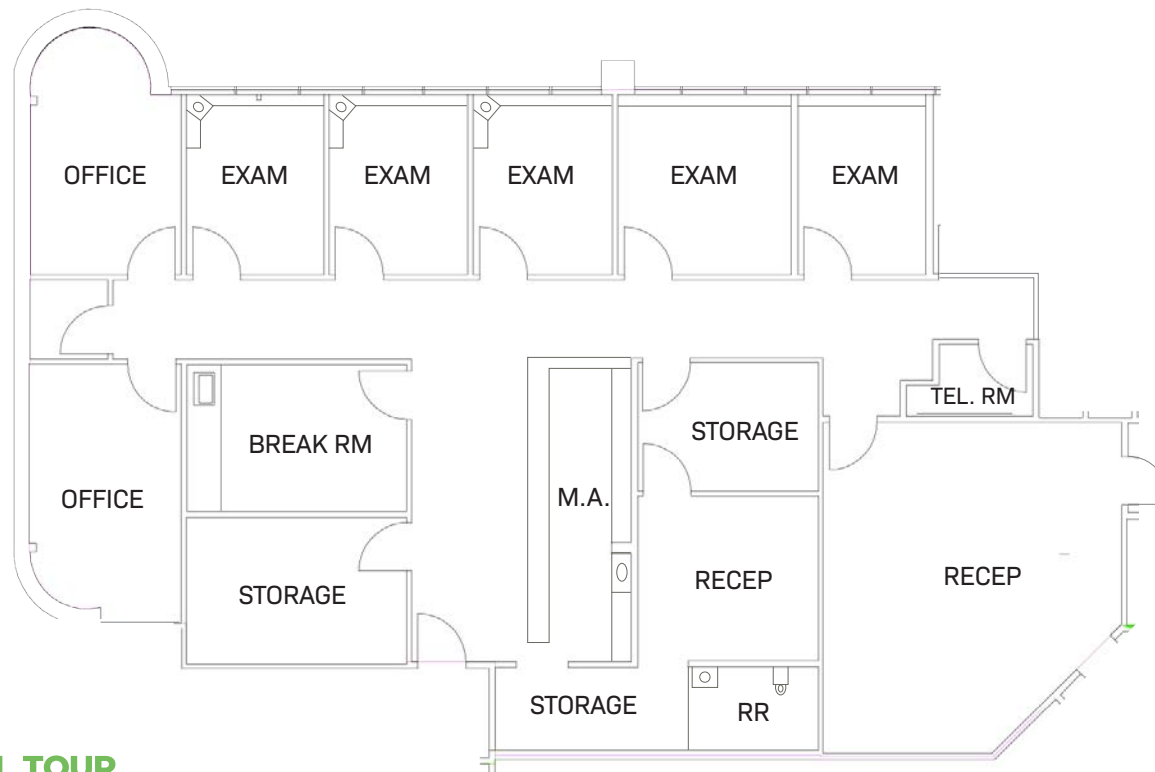
BAYWOOD

HEALTH CENTER

6550 East Broadway Road, Mesa

NORTH BUILDING

Suite 103: ±2,972 SF



VIRTUAL TOUR

For More Information, Please Contact:

Kevin Smigiel

Vice President
602.550.9295

kevin.smigiel@transwestern.com

Kathleen Morgan

Managing Director
602.809.1048

kathleen.morgan@transwestern.com

Vince Femiano

Managing Director
602.791.3310

vince.femiano@transwestern.com

Andrew Olivet

Associate
602.370.2685

andrew.olivet@transwestern.com



TRANSWESTERN

REAL ESTATE
SERVICES

2501 East Camelback Road, Suite 1
Phoenix, Arizona 85016

T 602.956.5000 **F** 602.956.5333

www.transwestern.com

6553 East Baywood Avenue, Mesa

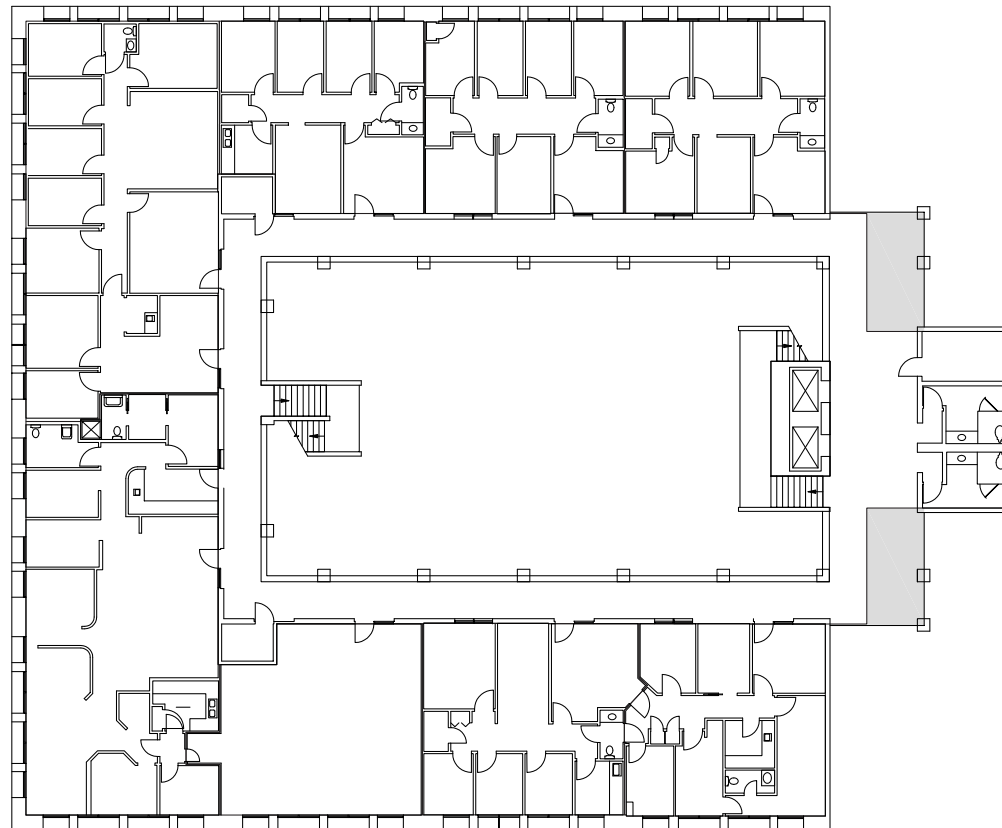
BAYWOOD

HEALTH CENTER

6550 East Broadway Road, Mesa

SOUTH BUILDING

Second Floor: ±12,649 SF
Divisible



For More Information, Please Contact:

Kevin Smigiel

Vice President
602.550.9295

kevin.smigiel@transwestern.com

Kathleen Morgan

Managing Director
602.809.1048

kathleen.morgan@transwestern.com

Vince Femiano

Managing Director
602.791.3310

vince.femiano@transwestern.com

Andrew Olivet

Associate
602.370.2685

andrew.olivet@transwestern.com



2501 East Camelback Road, Suite 1
Phoenix, Arizona 85016

T 602.956.5000 F 602.956.5333

www.transwestern.com