

# For Lease

2614 S Central Ave  
Los Angeles, CA 90011

# ±6,500 SF Warehouse

For more information, please contact:

**Daniel Park**

(213) 446-0396

[Danielpark777@hotmail.com](mailto:Danielpark777@hotmail.com)

DRE# 01227056

**PARK** INDUSTRIAL

SPECIALIZING IN INDUSTRIAL REAL ESTATE SERVICES

Park Industrial Realty  
800 McGarry St, 5<sup>th</sup> Floor  
Los Angeles, CA 90021  
Corporation DRE# 01983713

# Property Information

Building SF:	6,500 SF	• Brand new concrete block building
Land SF:	6,519 SF	• 24 feet high ceiling
Office SF:	1,500 SF	• Heavy electrical power – 400 amp
Year Built:	2024	• Great for warehouse, studio, flex space
Construction:	Concrete Block	• Front and rear ground level loading
Ceiling Height:	24'	• Very visible location at Central & Adams
Power:	400a, 120-240v, 3ph, 4w	• Close to Downtown LA
Loading:	2 GL	• Sprinklered
Zoning:	C2	• Securely fenced & gated
# Restrooms:	3	• Adjacent to brand new Starbucks Coffee in construction
Lease Rate:	\$7,500 (\$1.15/SF) Gross	

All information has been furnished from sources which we deem reliable, but for which we assume no liability. All measurements are approximate. Broker/Owner do not warrant its accuracy. Buyer/Lessee must verify all information.

# Plat Map

5119

11  
SHEET

P. A.  
1329-11

TRA  
4  
6658

REVISED  
4-3-65  
5-27-65

88101902008001  
93081609011002-12  
93091015006001-12

960216  
202211210203300127

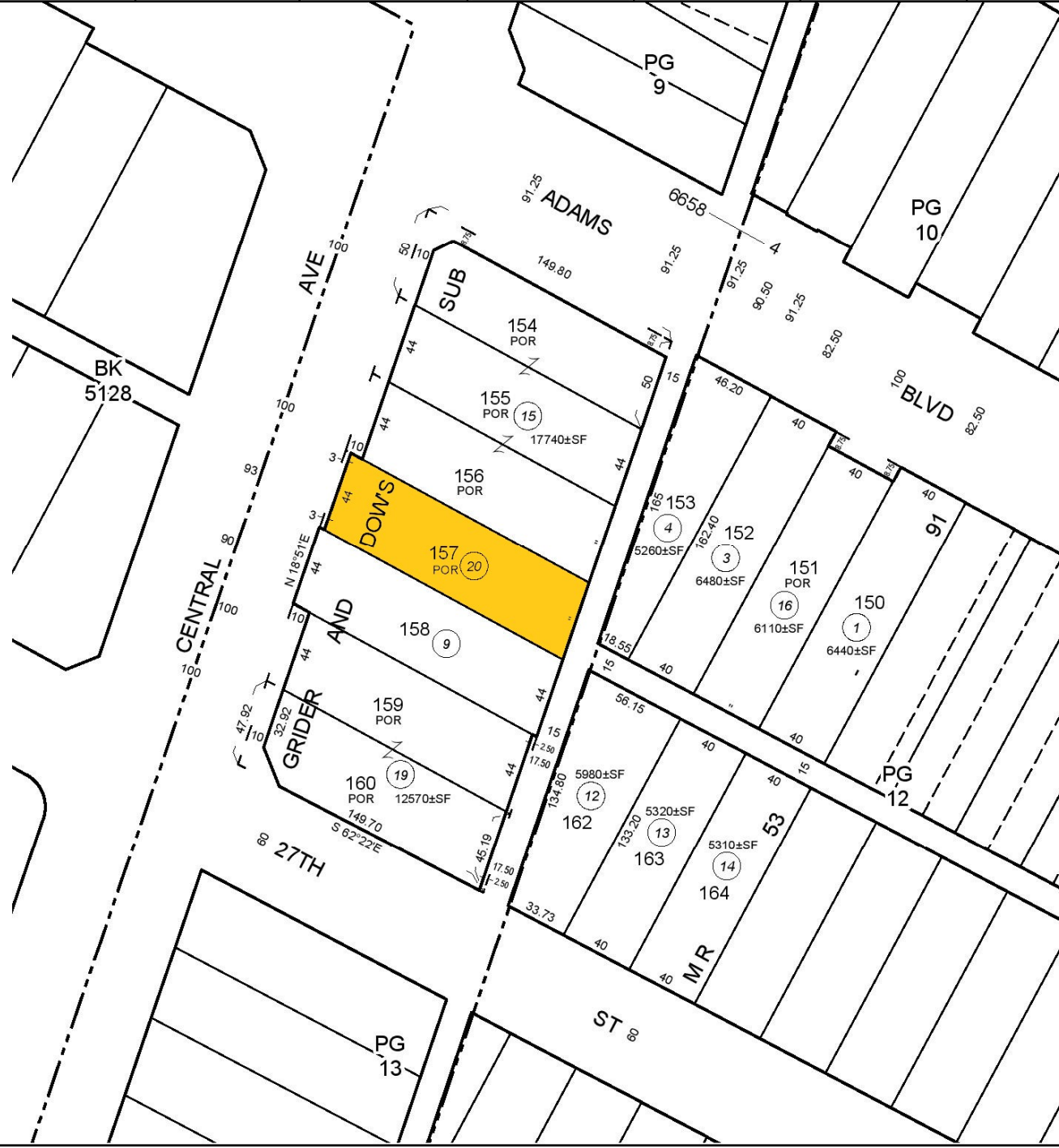
SEARCH NO

OFFIC  
COUN  
C

2023

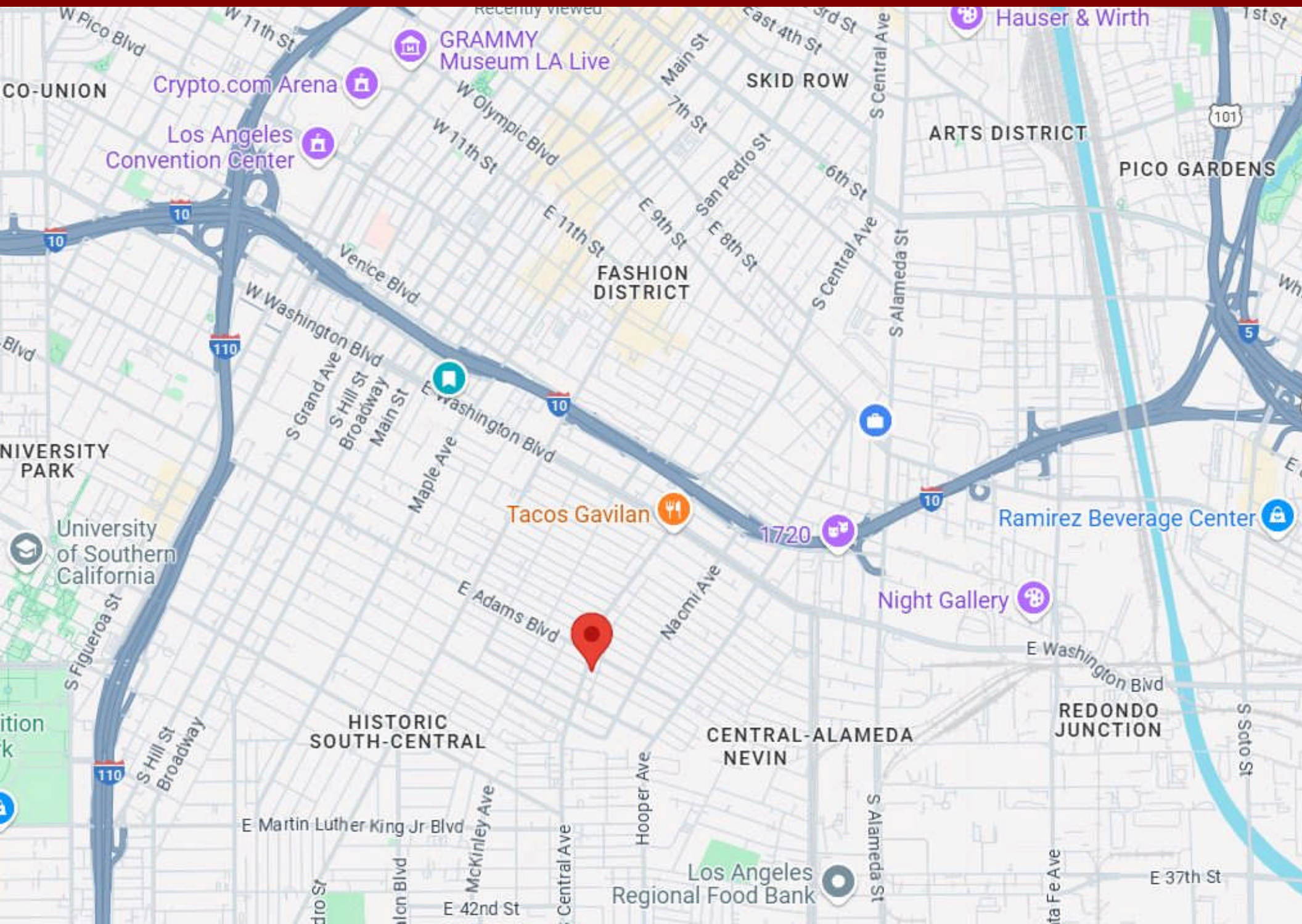


MAPPING AND GIS  
SERVICES  
SCALE 1" = 60'



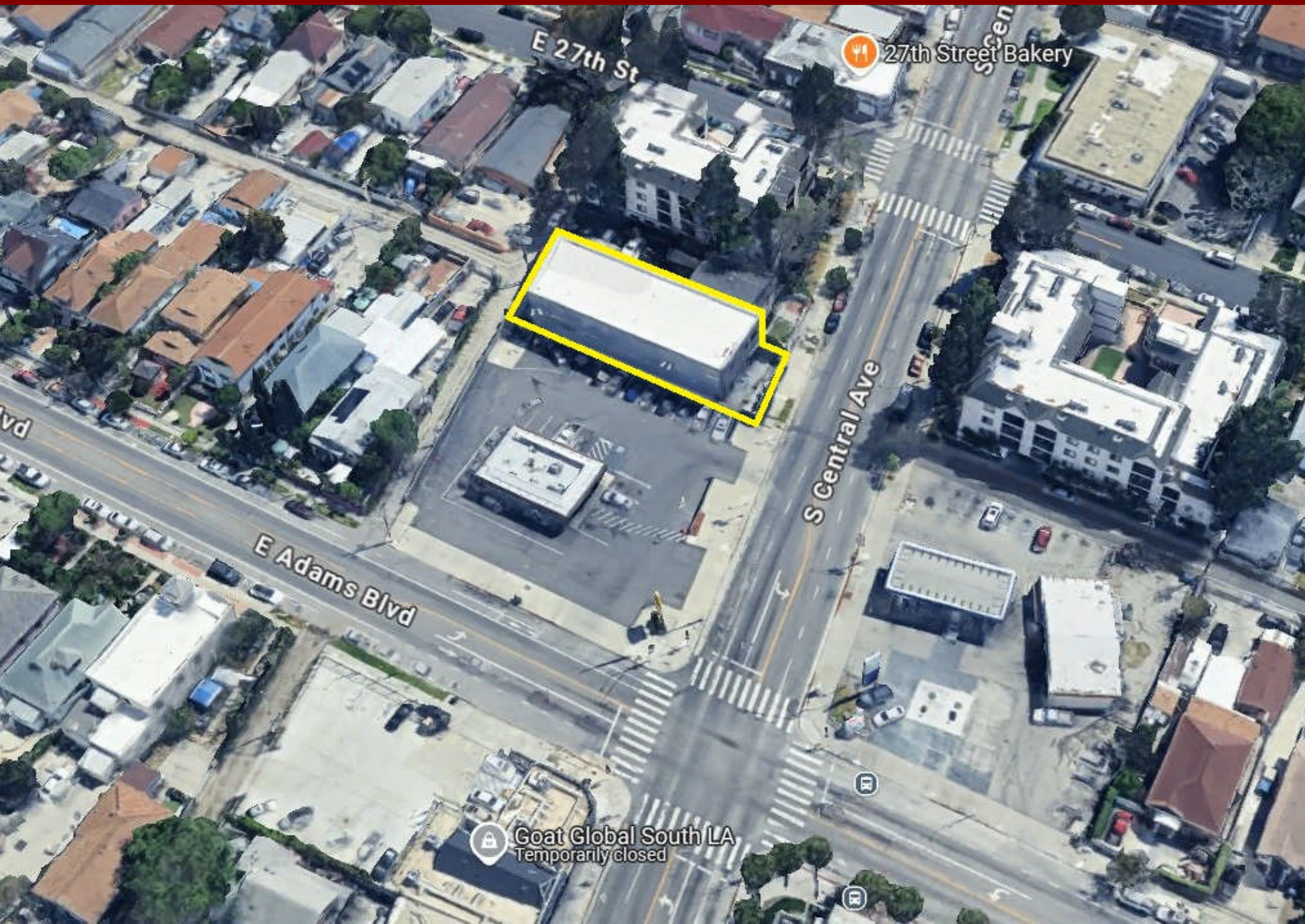


# Area Map



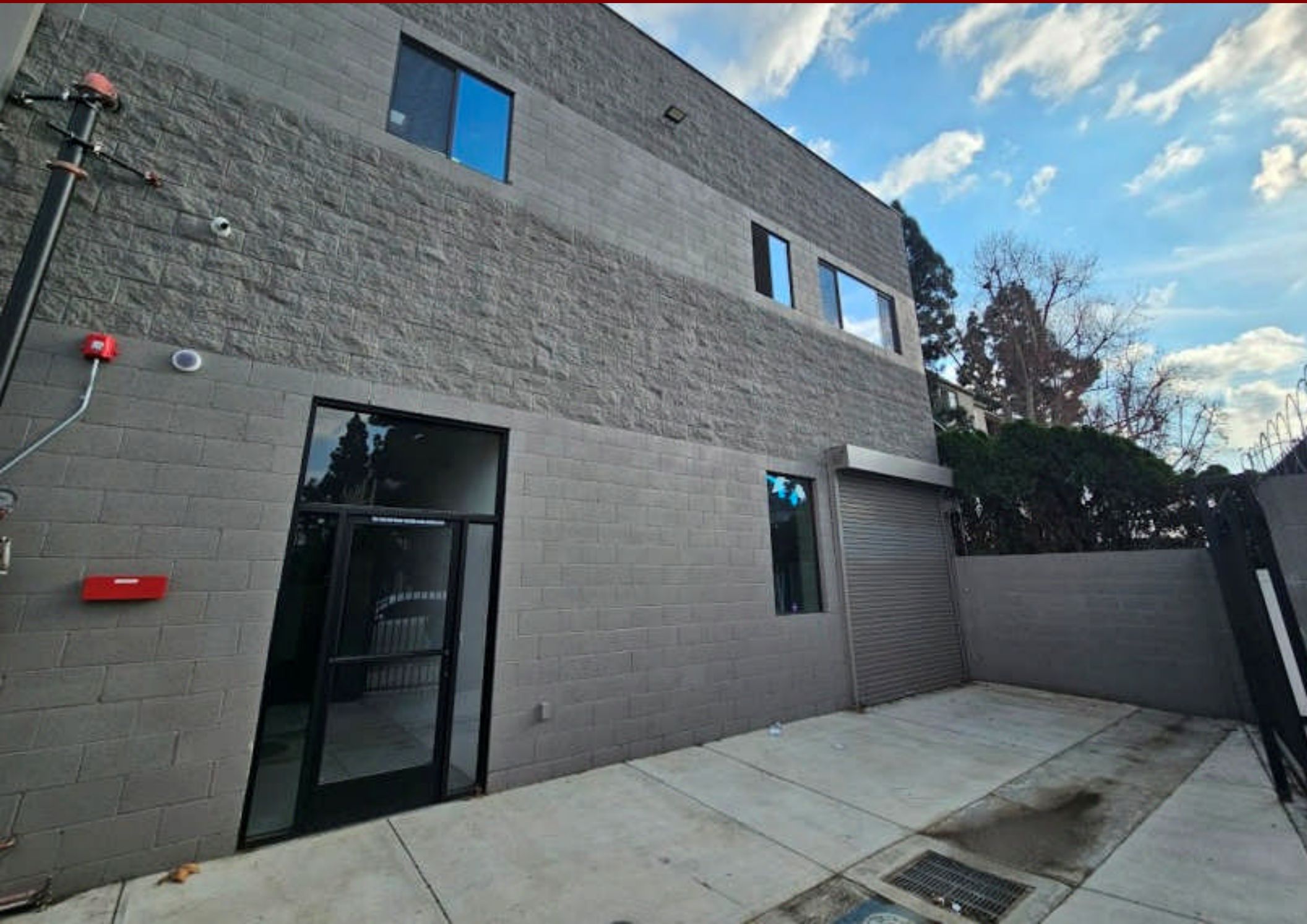


# Aerial Photo



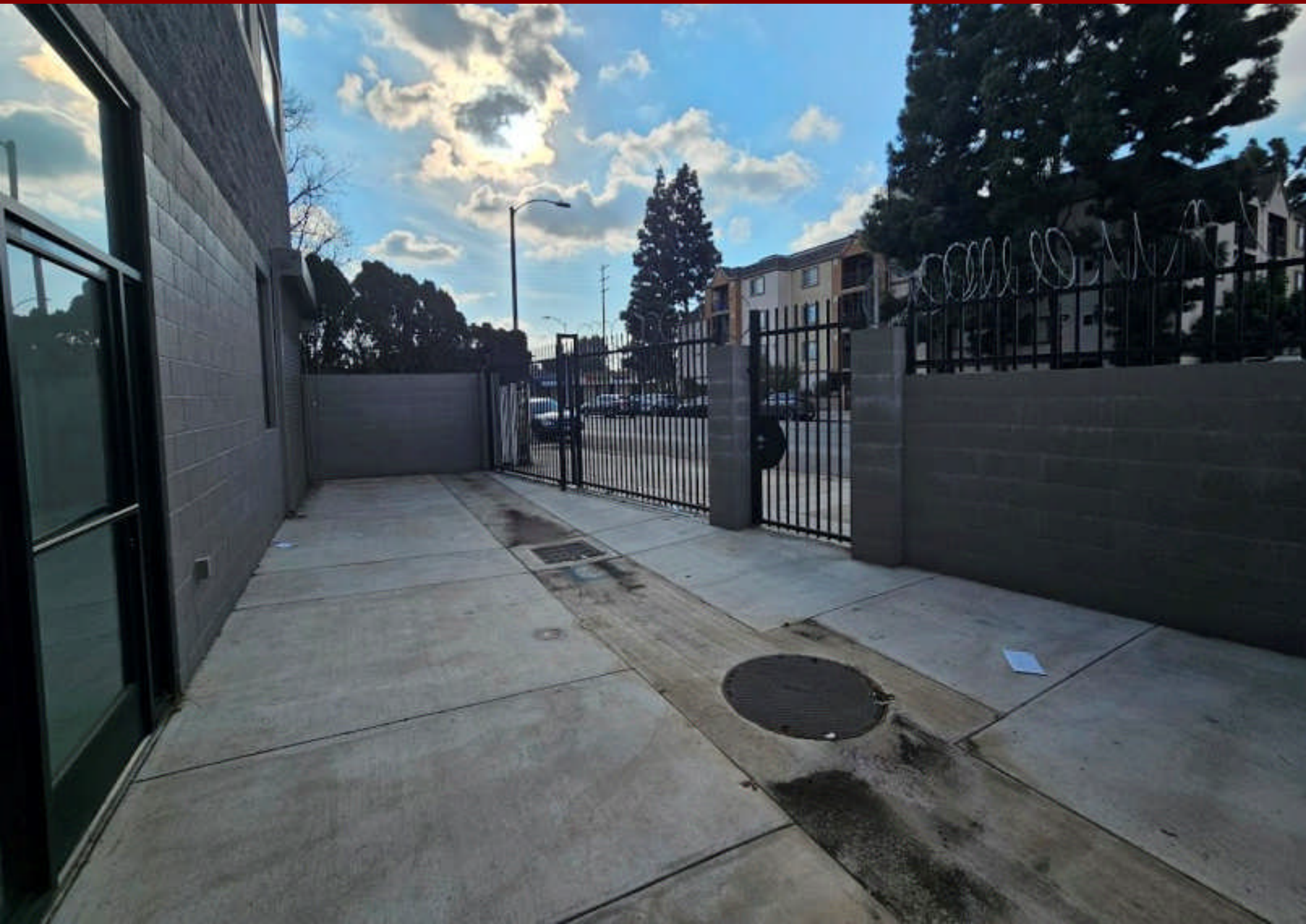


# Property Photo



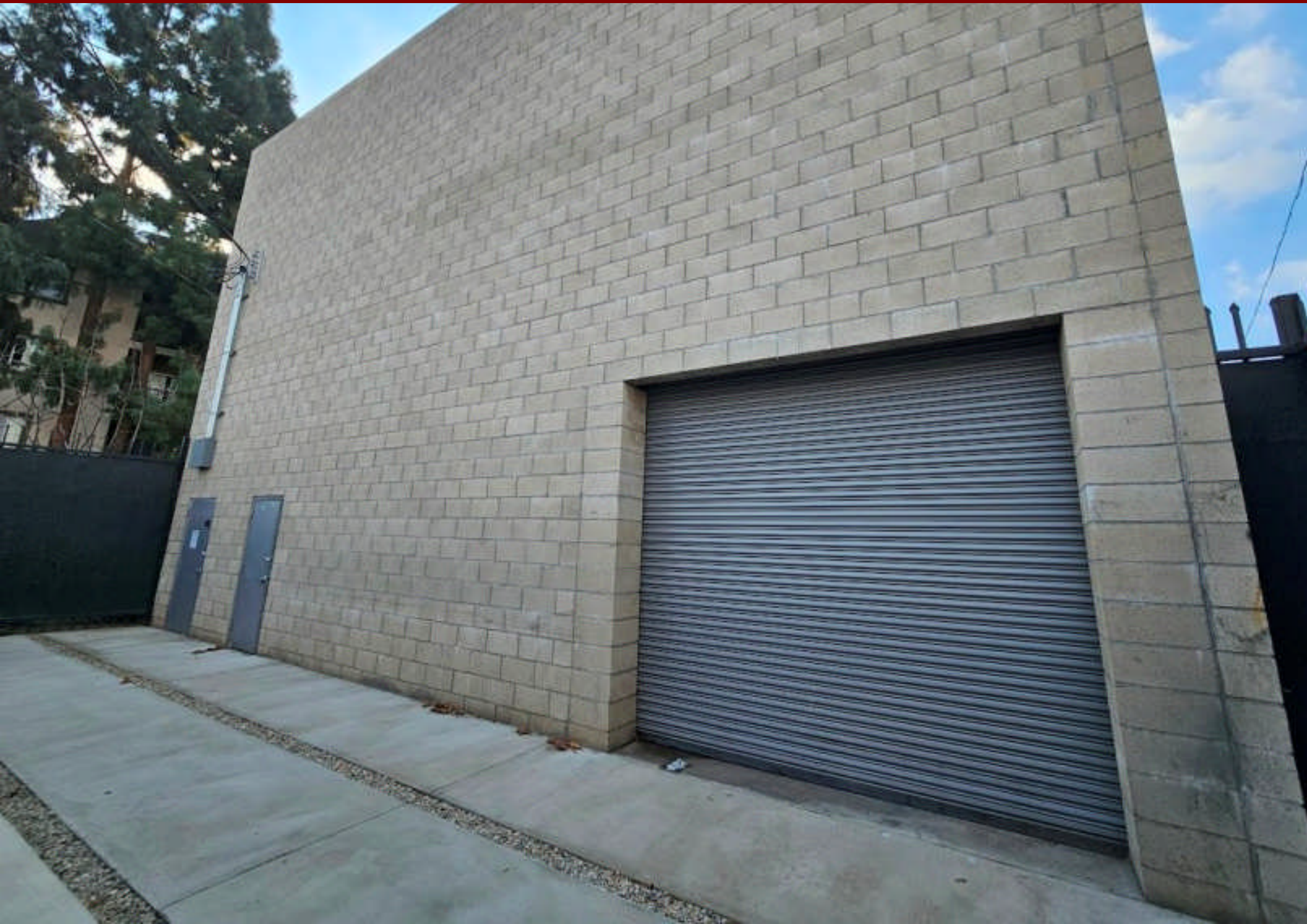


# Property Photo





# Property Photo



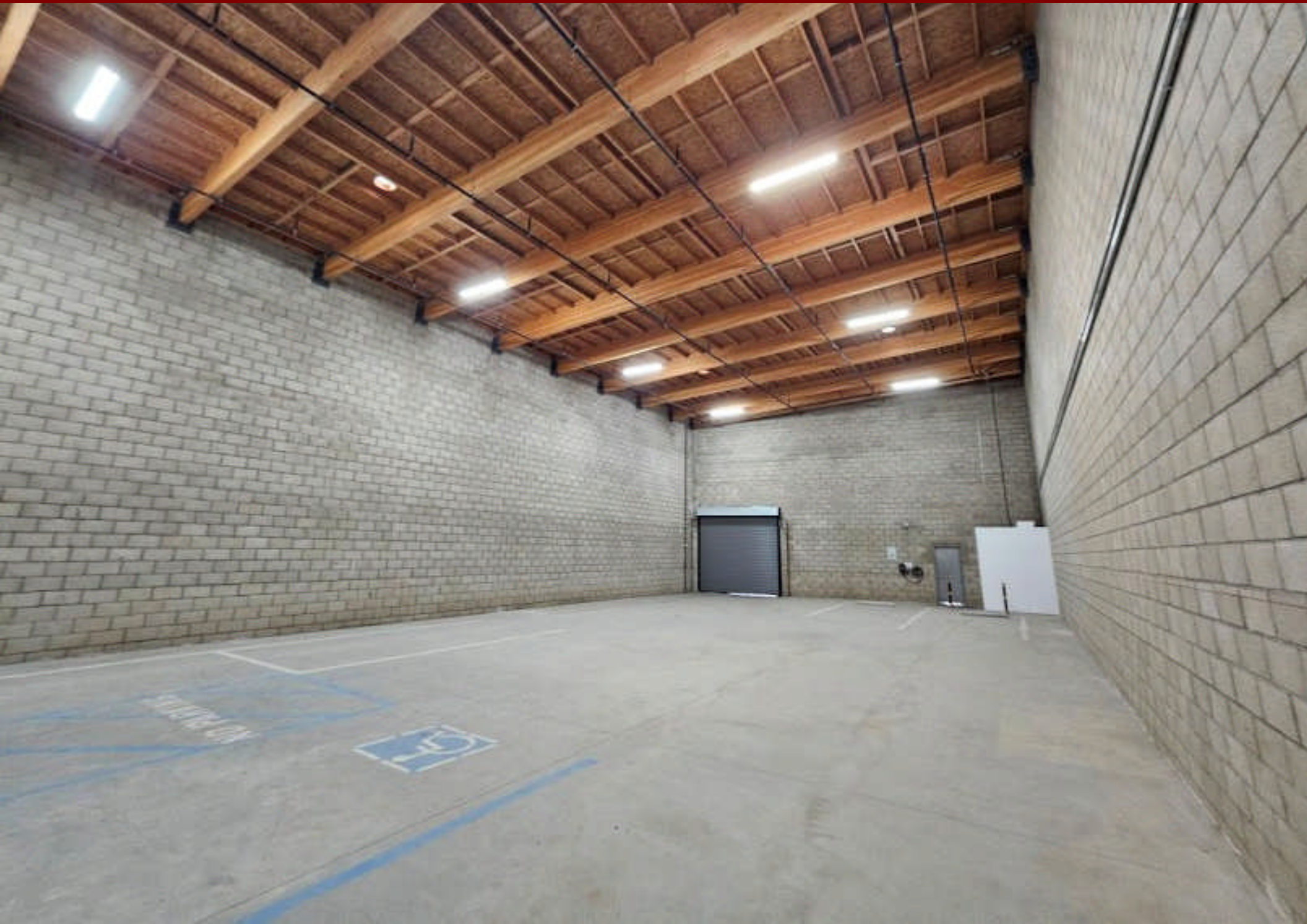


# Property Photo





# Property Photo



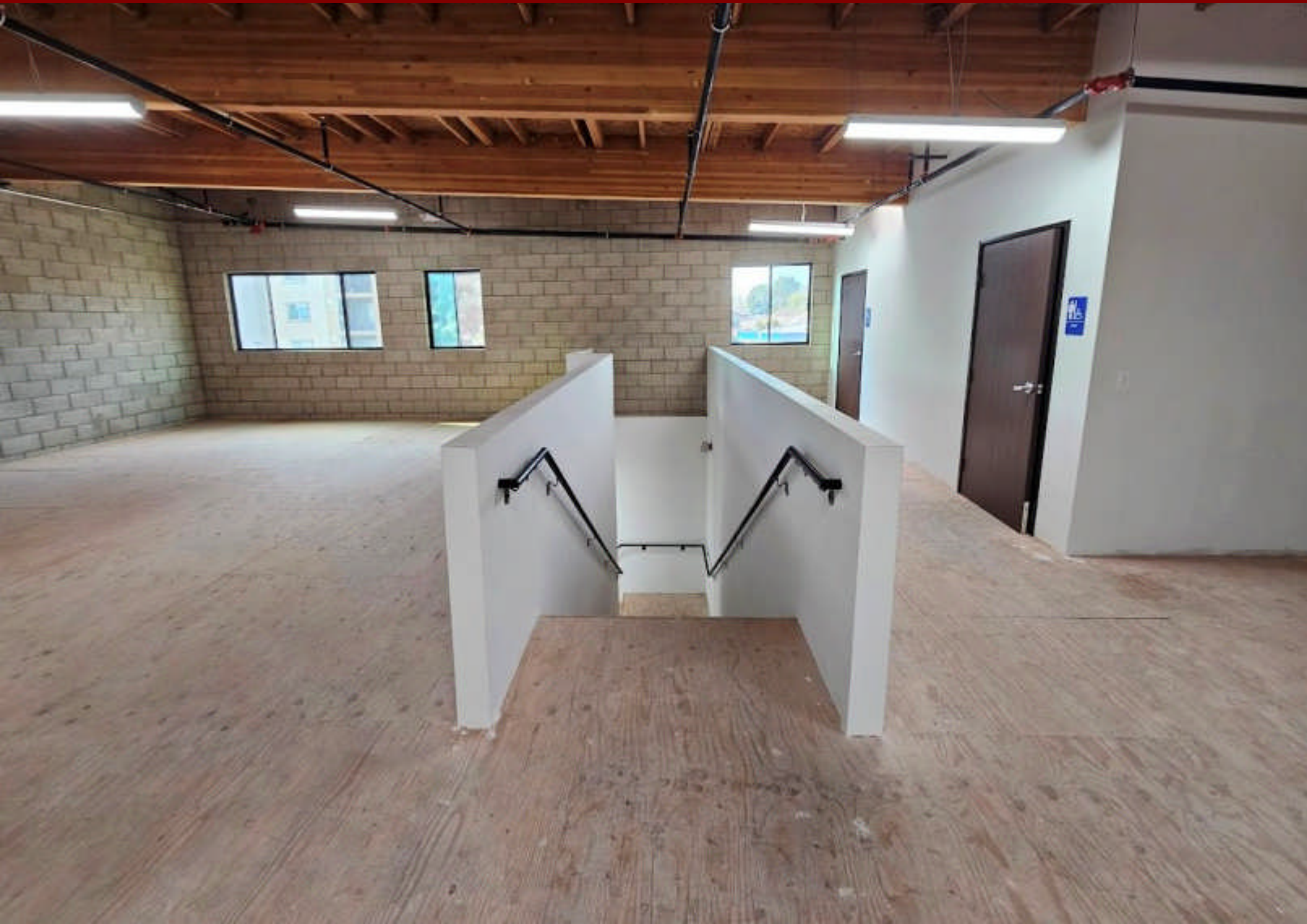


# Property Photo





# Property Photo





# Property Photo





# Property Photo

