

7000 ALABAMA

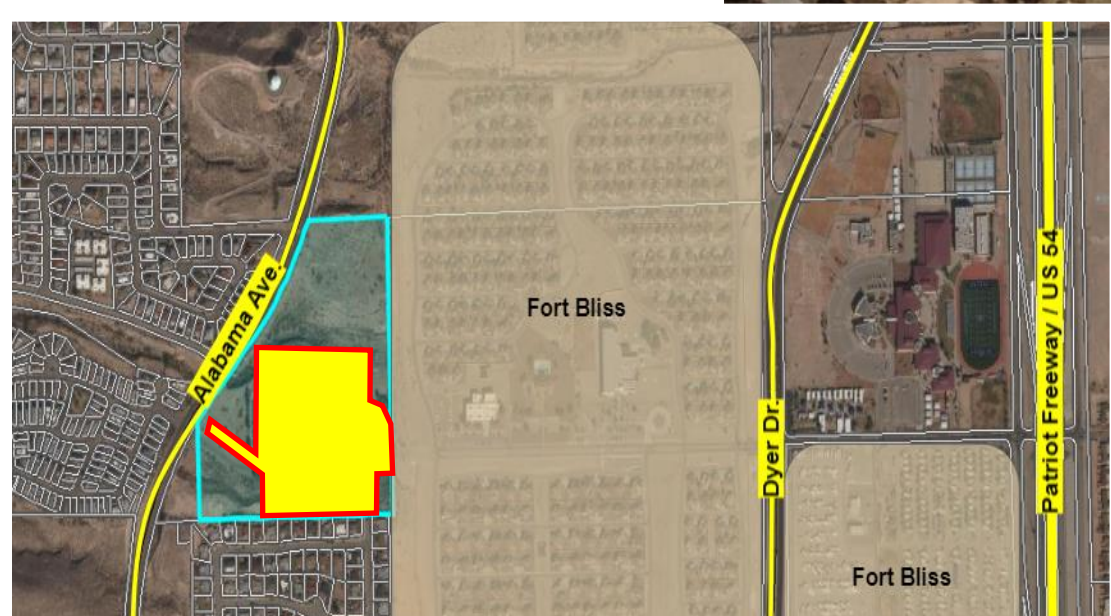
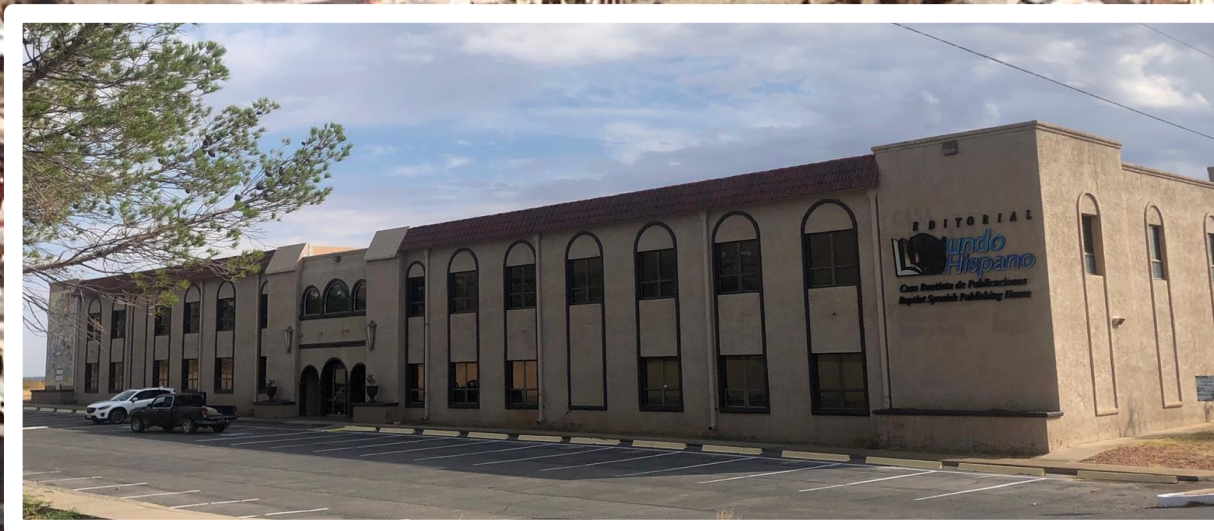
27,600 square foot office building and a 54,459 square foot warehouse, on 15 (+/-) acres of land. It is located in central Northeast next to Fort Bliss, US Highway 54 and SPUR 601.

Total Acreage: 15 acres +/-

Improved Square Feet: 82,059 sqft

Property Zoning: C-3 (Commercial)

PRICE: \$4.9 million



7000 Alabama St

Fort Bliss Museum
Temporarily closed

Fort Bliss

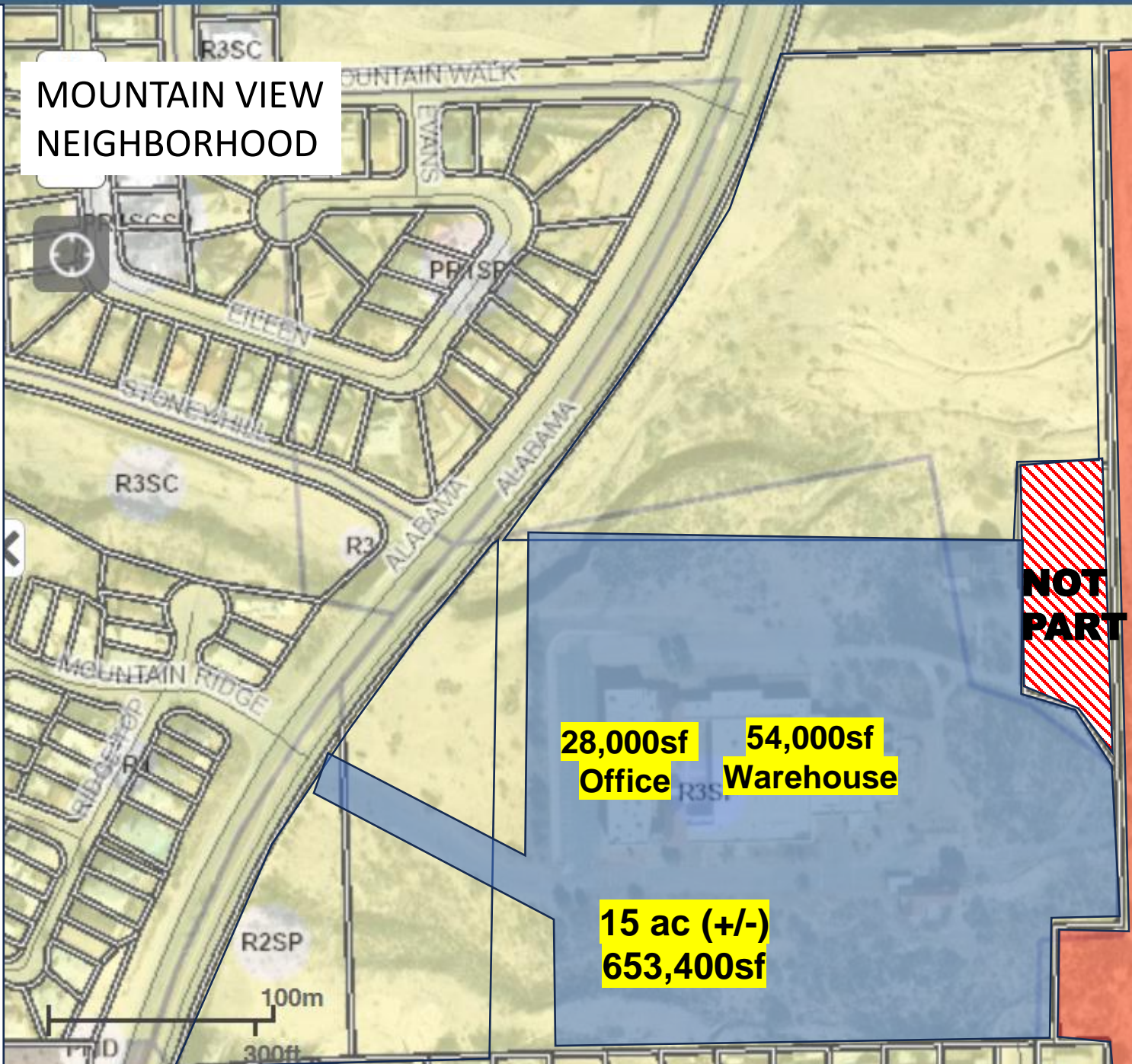
Memorial Park

Cristo Rey

El Paso

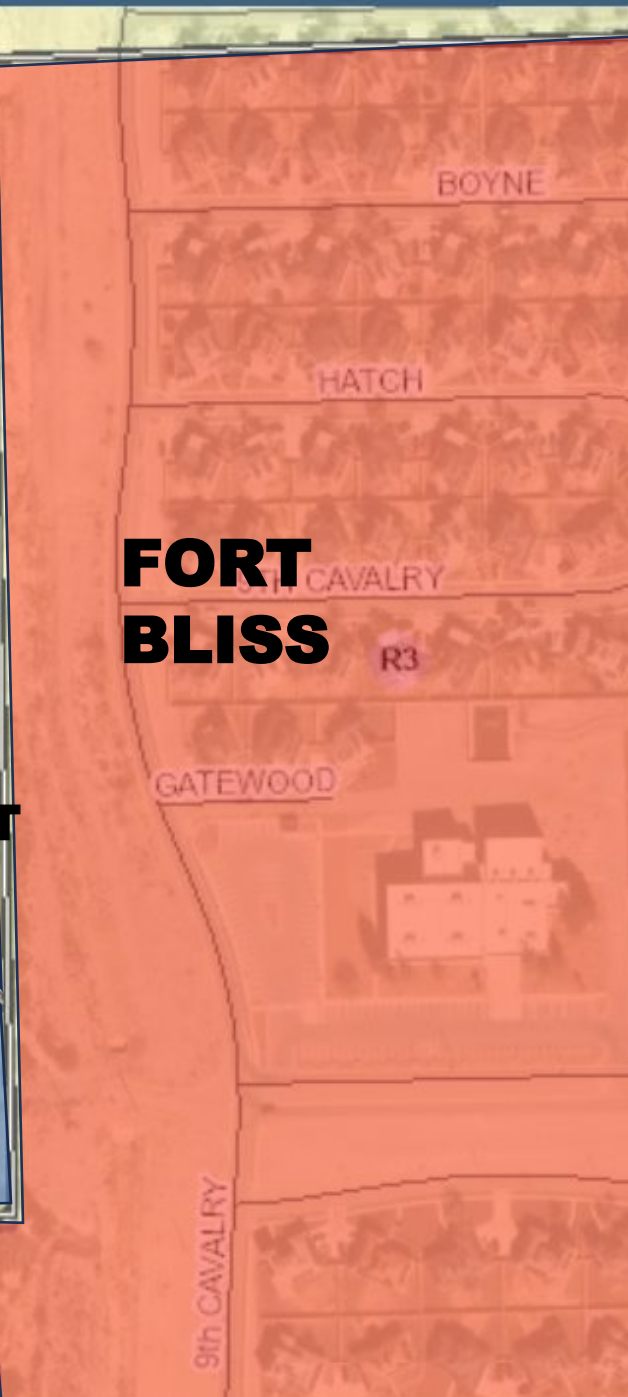
Layers

**MOUNTAIN VIEW
NEIGHBORHOOD**



**FORT
BLISS**

**NOT
PART**



OFFICE SPACE DETAILS

- 27,600 SF
- Class B+
- Two Story
- Elevator (Well maintained)



WAREHOUSE DETAILS

- 54,459 Square Feet
- Single Story
- Class C
- Reinforced Concrete Slab
- 4 Separate Dock Doors
 - 7'x7'
 - 8'x8'
 - 7'x6'
 - 7'x4'
- Refrigerated air throughout warehouse
- 8 Restrooms
- 3 Phase Electricity
- Ceiling Height: 16.3 Feet

