

OFFICE PROPERTY // FOR LEASE

1,474 SF OFFICE SUITE IN DOWNTOWN NORTHVILLE

135 CADY STREET
NORTHVILLE, MI 48167



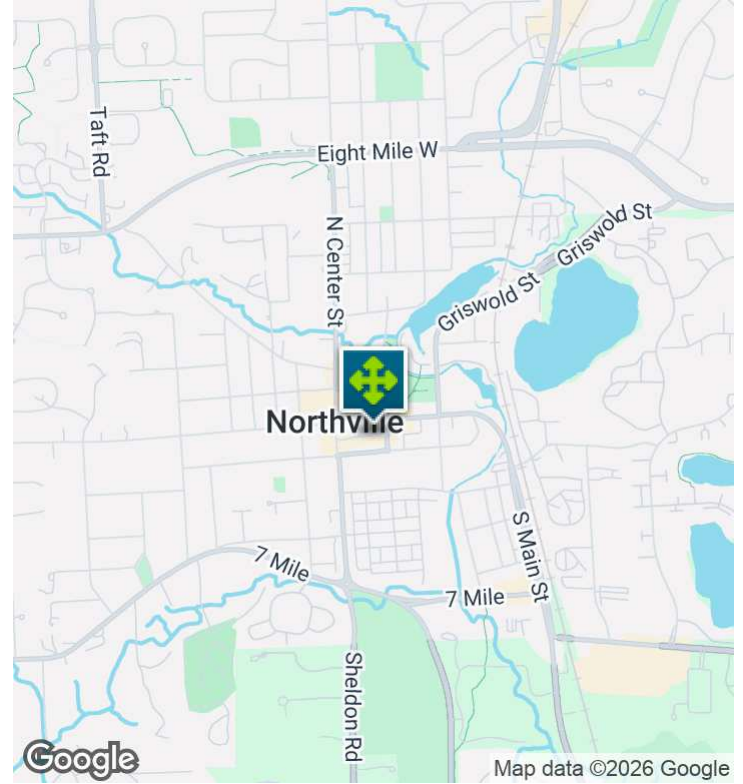
- 1,474 SF office suite in downtown Northville
- Great location next to "The Downs" mixed-use development
- Layout features three private offices, reception, kitchenette, and private restrooms
- Private parking next to parking deck
- Plug & Play condition, monument sign, and direct suite entry



26555 Evergreen Road, Suite 1500
Southfield, MI 48076
248.358.0100
pacommercial.com

We obtained the information above from sources we believe to be reliable. However, we have not verified its accuracy and make no guarantee, warranty or representation about it. It is submitted subject to the possibility of errors, omissions, change of price, rental or other conditions, prior sale, lease or financing, or withdrawal without notice. We include projections, opinions, assumptions or estimates for example only, and they may not represent current, past or future performance of the property. You and your tax and legal advisors should conduct your own investigation of the property and transaction.

EXECUTIVE SUMMARY



Lease Rate	\$2,950 PER MONTH (MG)
-------------------	-------------------------------

OFFERING SUMMARY

Building Size:	7,336 SF
Available SF:	1,474 SF
Year Built:	1963
Zoning:	CBD Central Business District
Market:	Detroit
Submarket:	Downtown Northville

PROPERTY OVERVIEW

Very accessible office space in the center of downtown Northville, located on the 50-yard line of the area's exciting new mixed-use "The Downs" development. 135 Cady Street offers the perfect mix of quiet executive office space and walkable convenience, with restaurants, shops, and local amenities just steps away. This professional setting provides an ideal environment for focused work while keeping you connected to the energy and activity of downtown. A great opportunity for businesses seeking visibility, accessibility, and a premier location in one of Northville's most desirable districts.

LOCATION OVERVIEW

Connection point of 'old downtown' and 'new development' located near "The Downs", a \$300+ million mixed-use luxury neighborhood in downtown Northville, Michigan. The 48-acre site will feature 443 residential units (townhomes, brownstones, and carriage homes), 18,000 square feet of commercial space, and over 15 acres of green space.

PROPERTY HIGHLIGHTS

- 1,474 SF office suite in downtown Northville
- Layout features three private offices, reception, kitchenette, and private restrooms



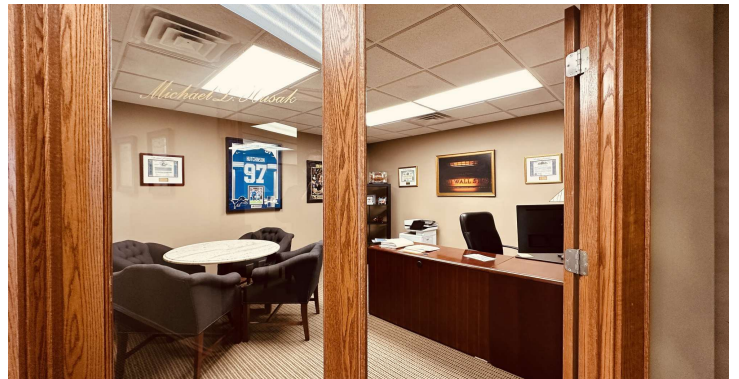
P.A. COMMERCIAL
Corporate & Investment Real Estate

Matt Schiffman CEO/MANAGING MEMBER
D: 248.281.9907 | C: 248.281.9907
matt@pacommercial.com

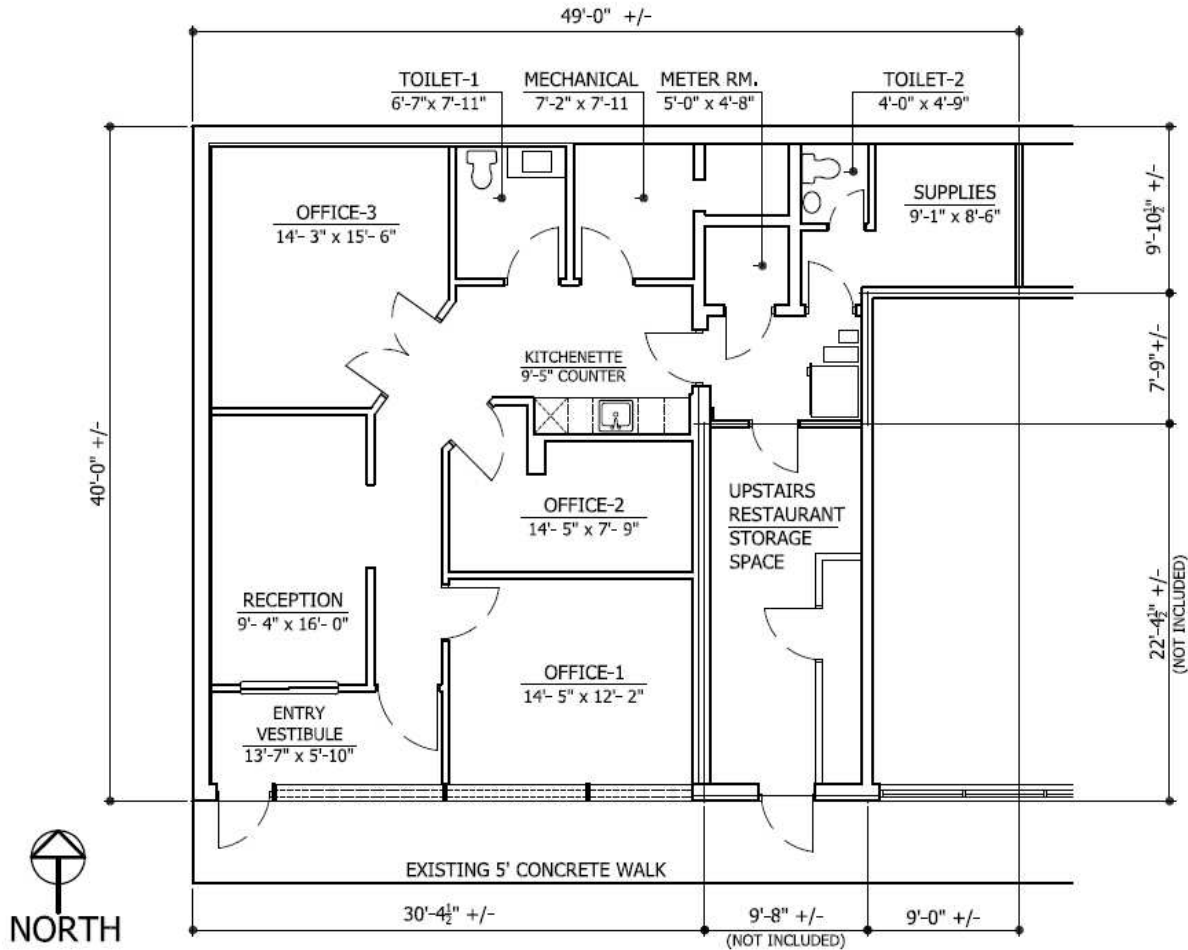
Dan Blugerman, CCIM SENIOR ASSOCIATE
D: 248.987.5418 | C: 248.987.5418
dan@pacommercial.com

135 EAST CADY STREET, NORTHVILLE, MI 48167 // FOR LEASE

ADDITIONAL PHOTOS



FLOOR PLANS



1
A-1

135 CADY ST. - EXISTING "AS BUILT" FLOOR PLAN

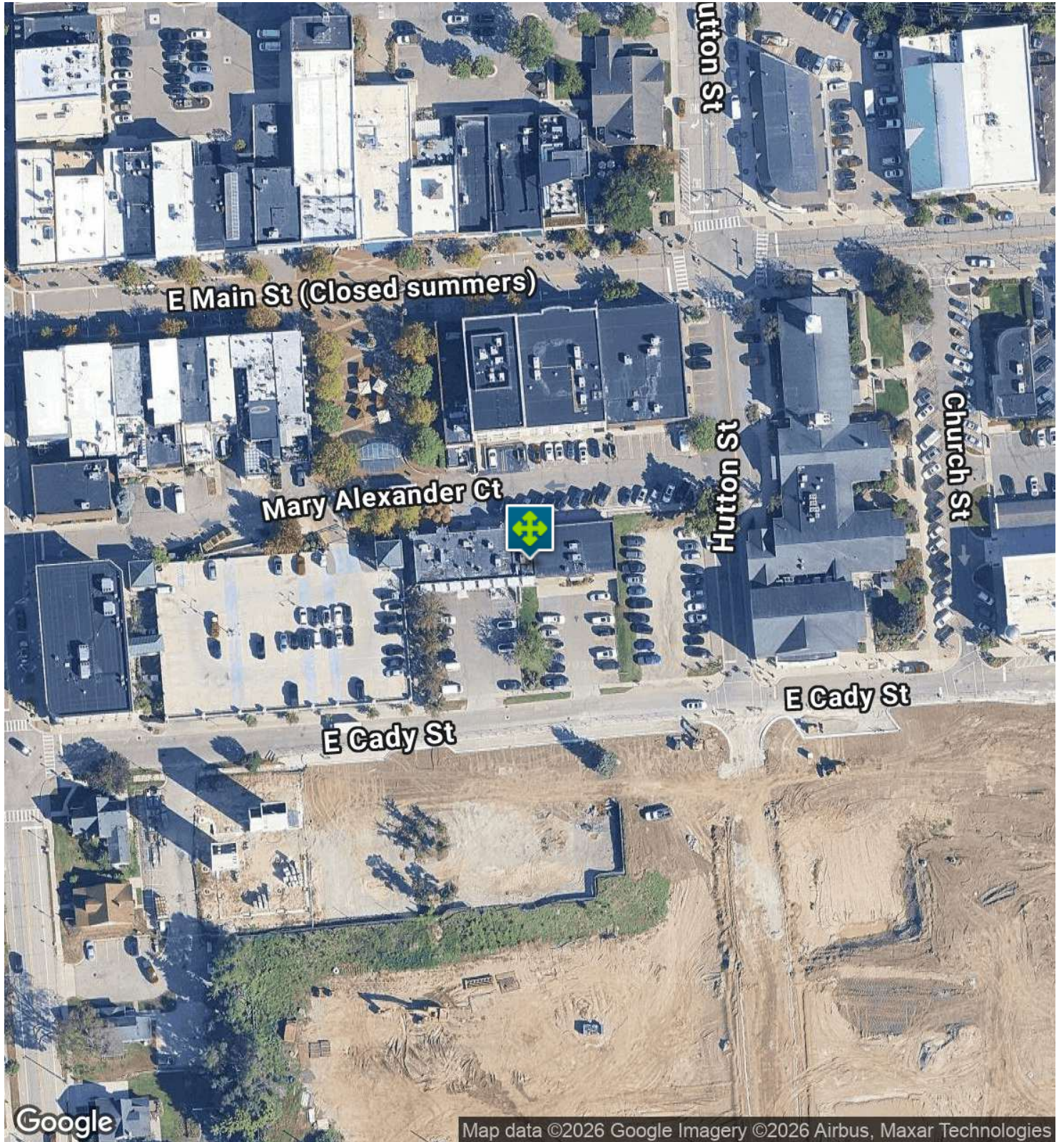
LEASE EXHIBIT - A

SCALE: 1/8" = 1' - 0" [GROSS FLOOR AREA: 1,474 S.F.]

DATE: MAY 16, 2026

135 EAST CADY STREET, NORTHVILLE, MI 48167 // FOR LEASE

AERIAL MAP



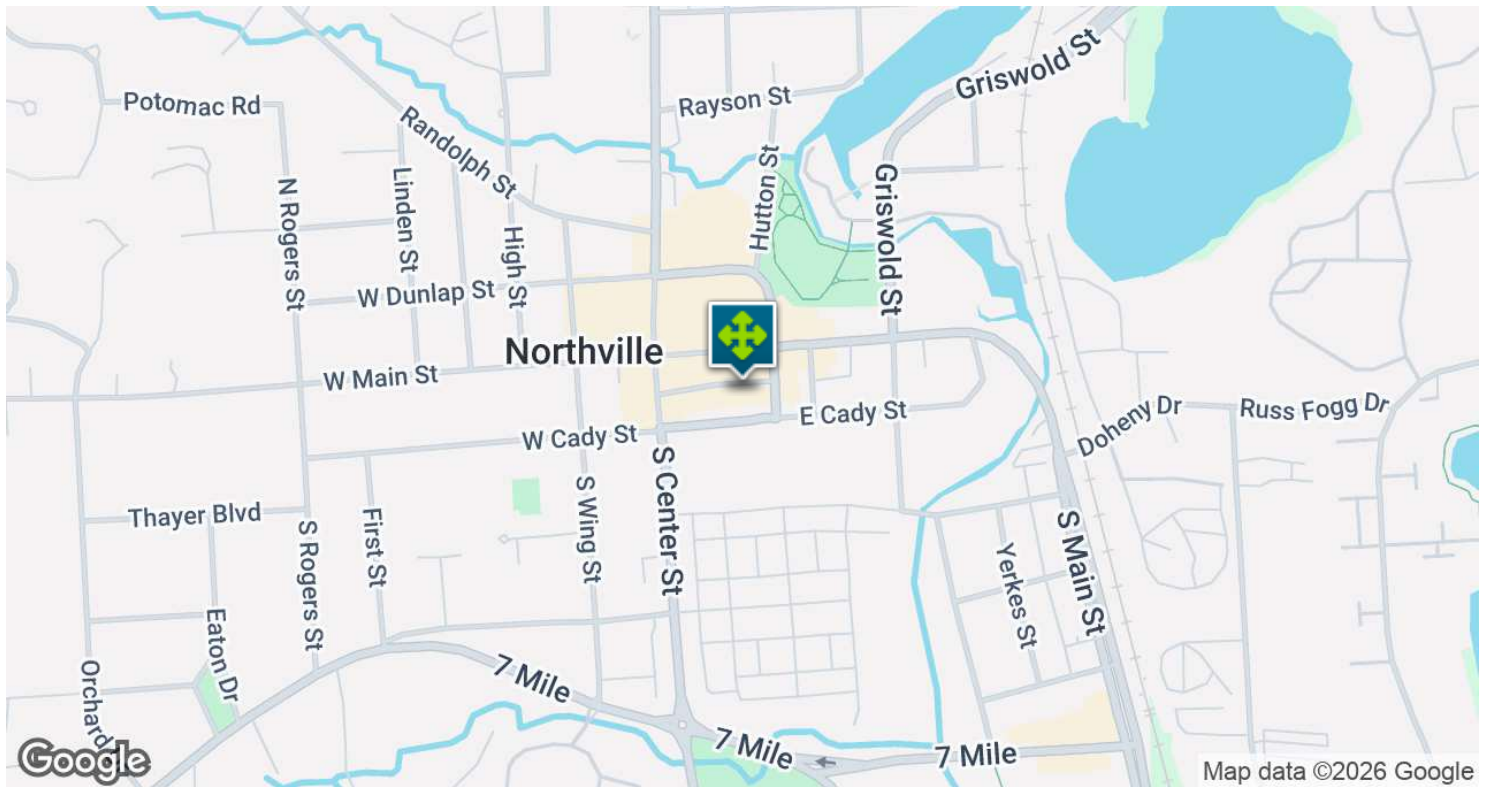
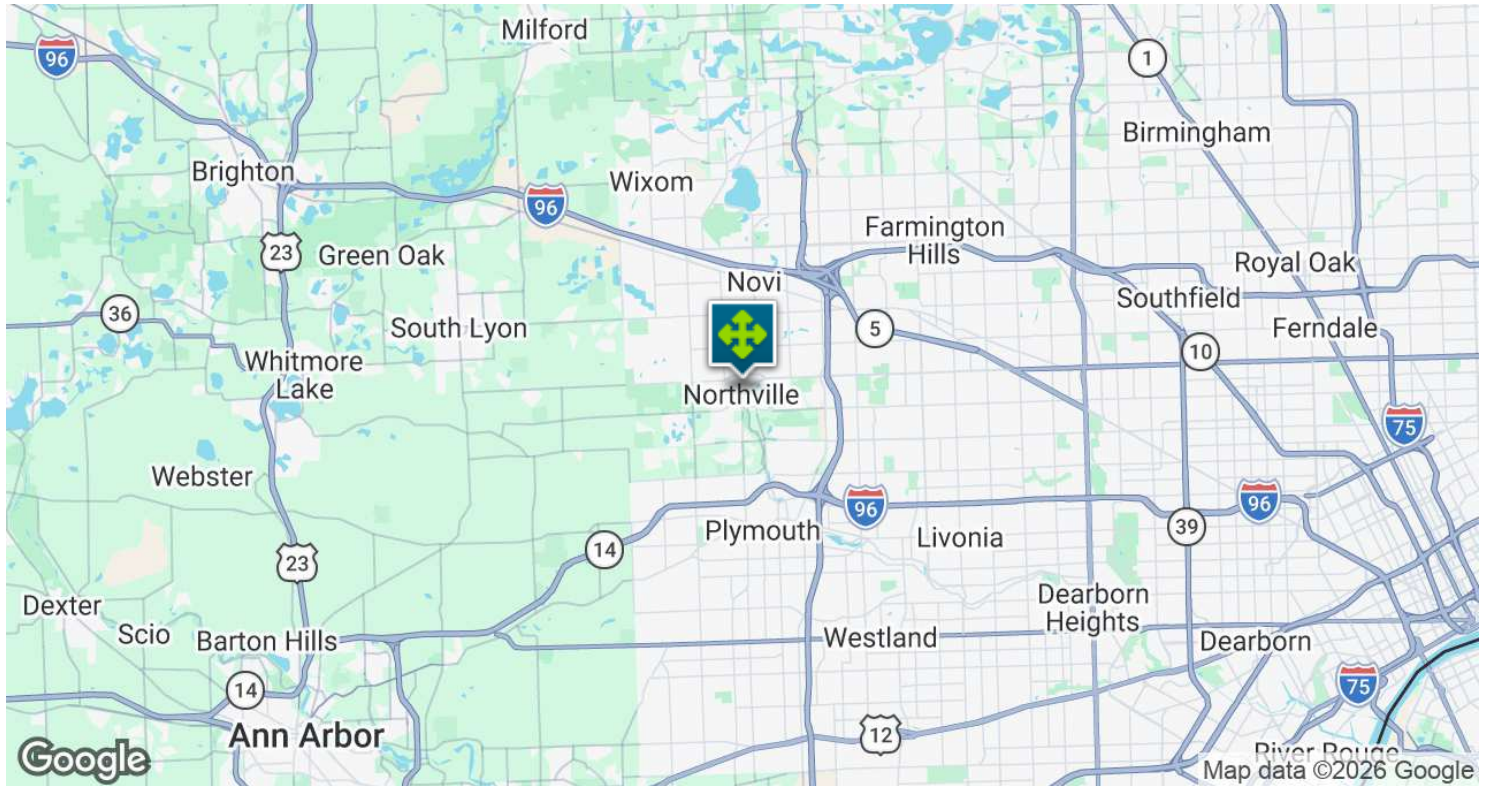
Matt Schiffman CEO/MANAGING MEMBER
D: 248.281.9907 | C: 248.281.9907
matt@pacommercial.com

Dan Blugerman, CCIM SENIOR ASSOCIATE
D: 248.987.5418 | C: 248.987.5418
dan@pacommercial.com

We obtained the information above from sources we believe to be reliable. However, we have not verified its accuracy and make no guarantee, warranty or representation about it. It is submitted subject to the possibility of errors, omissions, change of price, rental or other conditions, prior sale, lease or financing, or withdrawal without notice. We include projections, opinions, assumptions or estimates for example only, and they may not represent current, past or future performance of the property. You and your tax and legal advisors should conduct your own investigation of the property and transaction.

135 EAST CADY STREET, NORTHVILLE, MI 48167 // FOR LEASE

LOCATION MAP

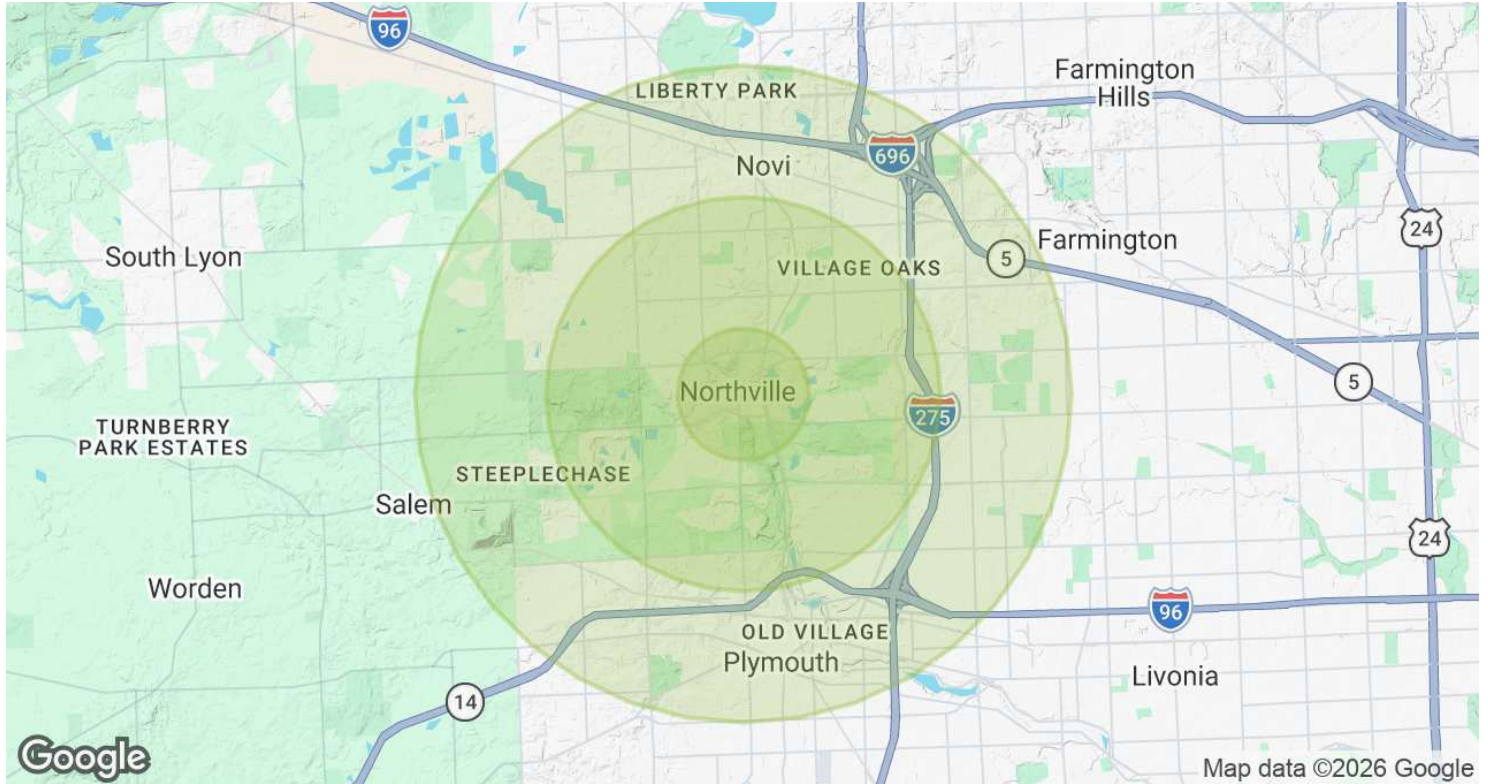


Matt Schiffman CEO/MANAGING MEMBER
D: 248.281.9907 | C: 248.281.9907
matt@pacommercial.com

Dan Blugerman, CCIM SENIOR ASSOCIATE
D: 248.987.5418 | C: 248.987.5418
dan@pacommercial.com

We obtained the information above from sources we believe to be reliable. However, we have not verified its accuracy and make no guarantee, warranty or representation about it. It is submitted subject to the possibility of errors, omissions, change of price, rental or other conditions, prior sale, lease or financing, or withdrawal without notice. We include projections, opinions, assumptions or estimates for example only, and they may not represent current, past or future performance of the property. You and your tax and legal advisors should conduct your own investigation of the property and transaction.

DEMOGRAPHICS MAP & REPORT

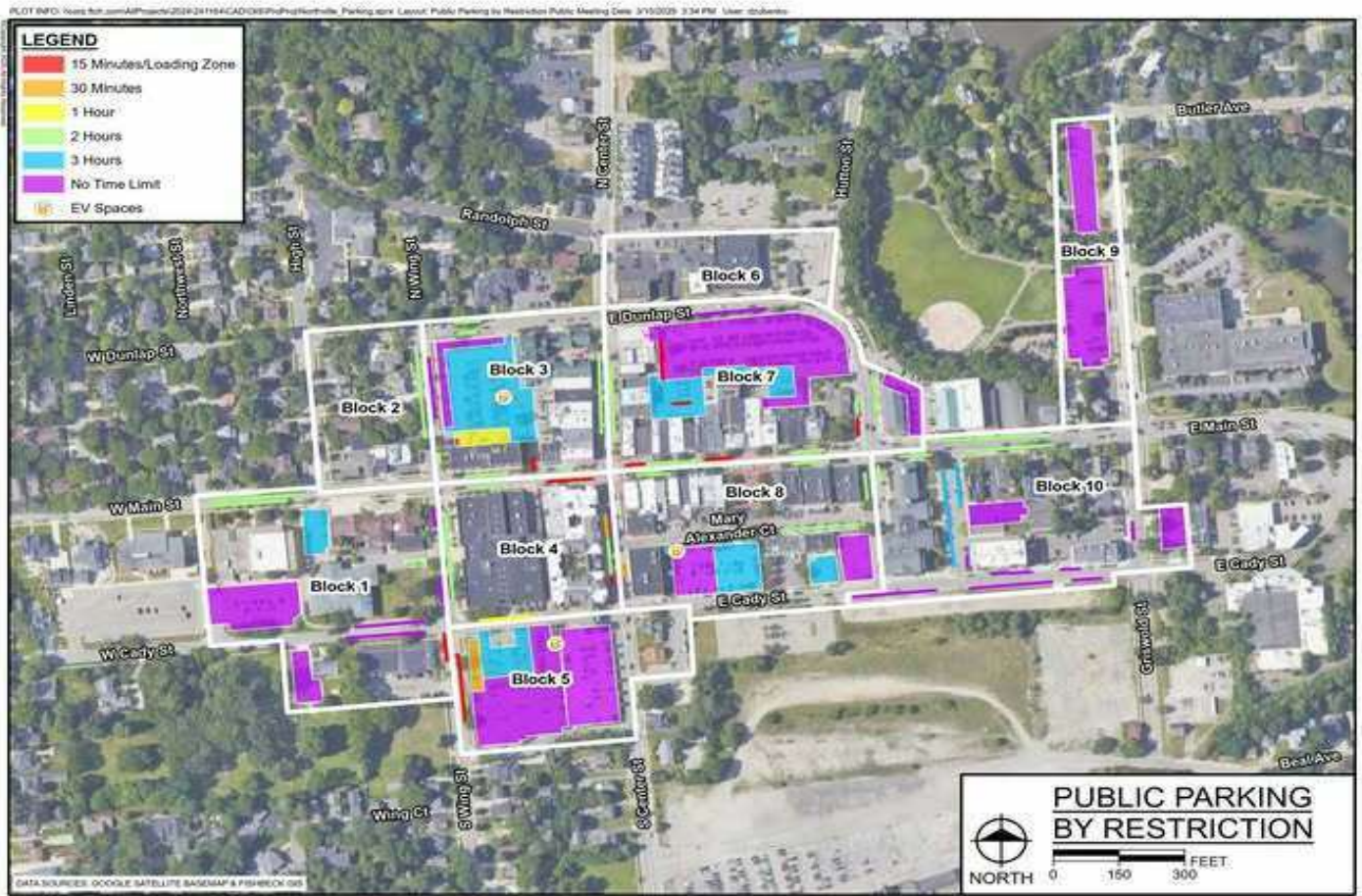


POPULATION	1 MILE	3 MILES	5 MILES
Total Population	8,232	63,400	152,763
Average Age	44.2	44.8	44.3
Average Age (Male)	42.7	44.5	43.4
Average Age (Female)	45.6	45.4	45.0

HOUSEHOLDS & INCOME	1 MILE	3 MILES	5 MILES
Total Households	3,953	25,298	62,016
# of Persons per HH	2.1	2.5	2.5
Average HH Income	\$143,303	\$175,778	\$158,773
Average House Value	\$444,632	\$512,770	\$451,969

2023 American Community Survey (ACS)

135 EAST CADY STREET, NORTHVILLE, MI 48167 // FOR LEASE
PARKING MAP



135 EAST CADY STREET, NORTHVILLE, MI 48167 // FOR LEASE

CONTACT US



FOR MORE INFORMATION, PLEASE CONTACT:



Matt Schiffman

CEO/MANAGING MEMBER

D: 248.281.9907

C: 248.281.9907

matt@pacommercial.com



Dan Blugerman, CCIM

SENIOR ASSOCIATE

D: 248.987.5418

C: 248.987.5418

dan@pacommercial.com

P.A. Commercial

26555 Evergreen Road, Suite 1500

Southfield, MI 48076

P: 248.358.0100

F: 248.358.5300

pacommercial.com

Follow Us!



We obtained the information above from sources we believe to be reliable. However, we have not verified its accuracy and make no guarantee, warranty or representation about it. It is submitted subject to the possibility of errors, omissions, change of price, rental or other conditions, prior sale, lease or financing, or withdrawal without notice. We include projections, opinions, assumptions or estimates for example only, and they may not represent current, past or future performance of the property. You and your tax and legal advisors should conduct your own investigation of the property and transaction.