

FOR LEASE
1,800 SF - 12,570 SF AVAILABLE

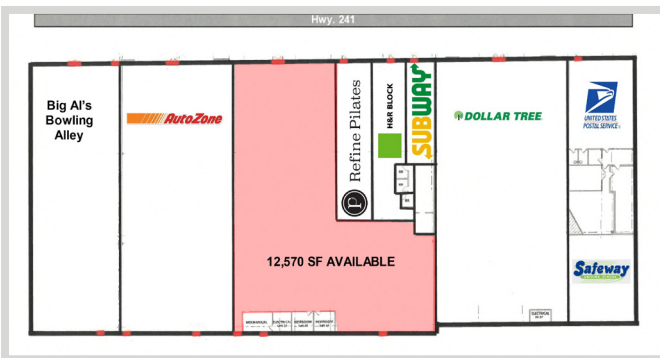


FEATURES:

- Mall is recently under NEW OWNERSHIP!
- Located in the heart of St. Michael off HWY 241.
- Recently remodeled in 2024!
- 1,800 sf to 12,570 sf of retail / office space available.
- Pylon signage on Hwy. 241 with digital reader board available.

Lease Rate

Negotiable



Current Tenants:

- ▲ Al's Bowling Alley
- ▲ Autozone
- ▲ Refine Pilates
- ▲ H & R Block
- ▲ Subway
- ▲ Dollar Tree
- ▲ USPS / Safeway Driving School

Overview 1

Aerial Maps 2

Site Plans 3

Exterior Photos 4

Interior Photos 5

City Info 6



Chad Weeks
612.619.9911
cweeks@arrowcos.com



Steve Fischer
612.619.9991
sfischer@arrowcos.com

Contact

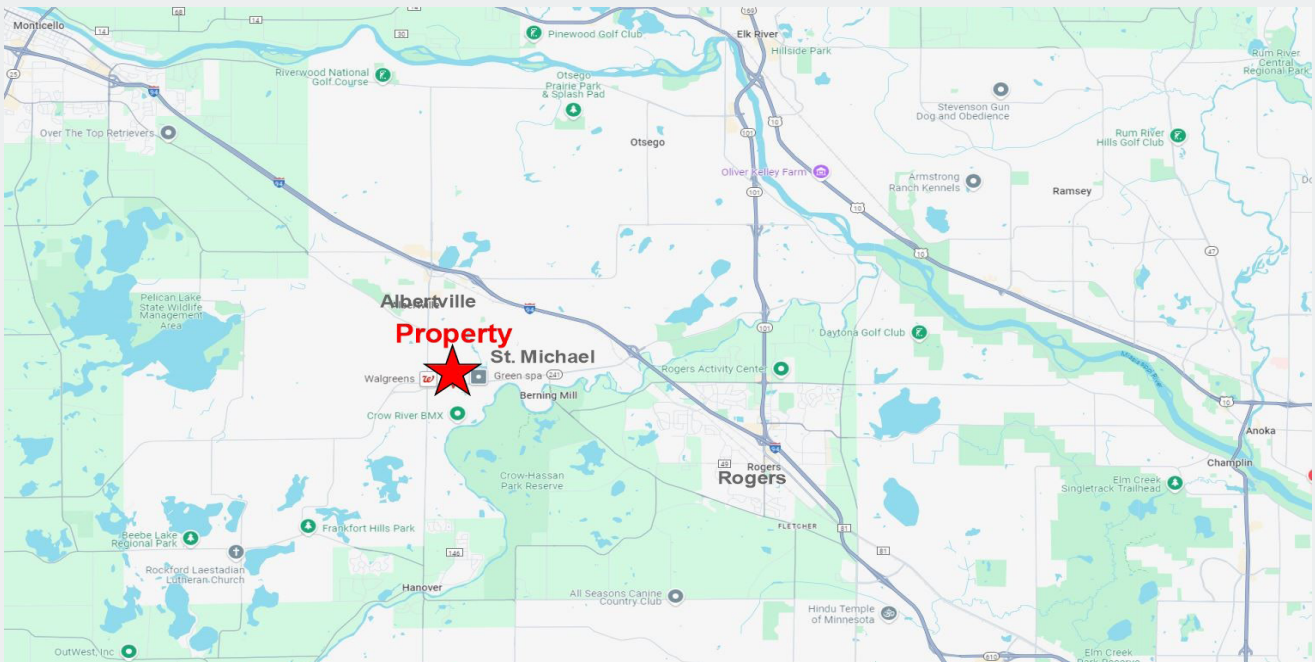
Phone: 763.424.6355
Fax: 763.424.7980

Arrow Companies
7365 Kirkwood Court N. Suite 335
Maple Grove, MN 55369

www.arrowcos.com

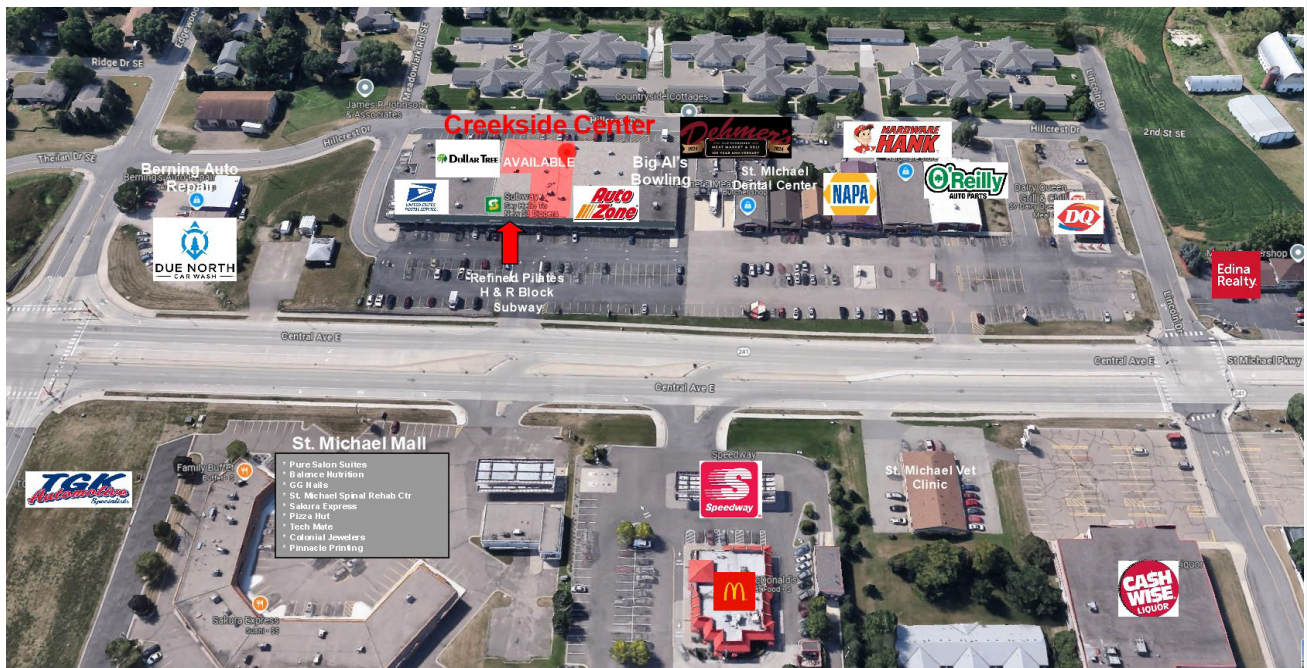
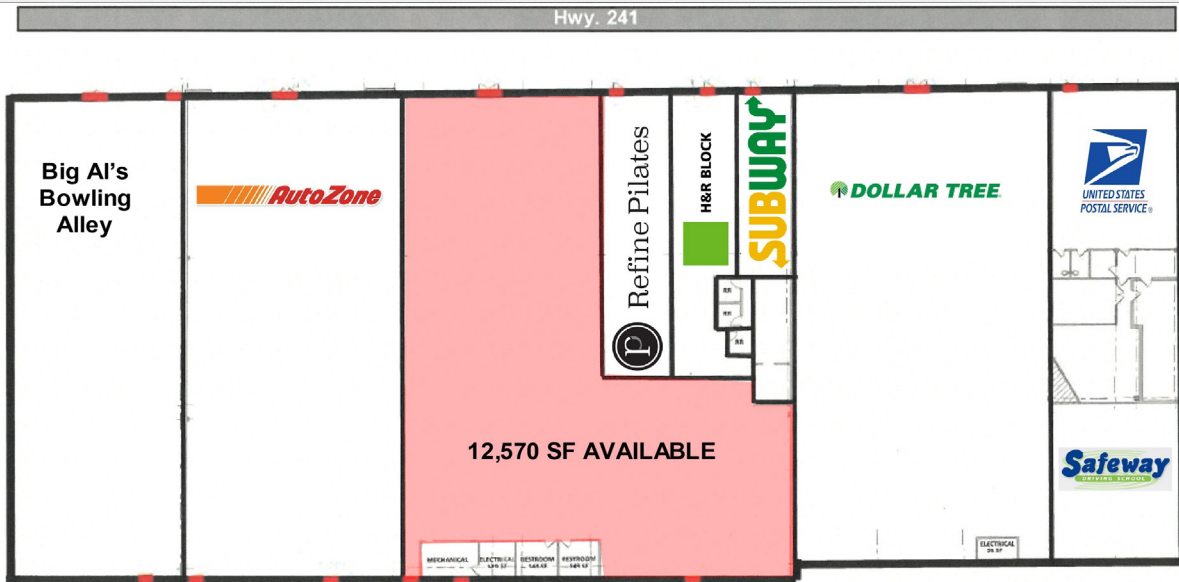
AERIAL & MAP

FOR LEASE
1,800 SF - 12,570 SF AVAILABLE



SITE PLANS

FOR LEASE
1,800 SF - 12,570 SF AVAILABLE



EXTERIOR PHOTOS

FOR LEASE
1,800 SF - 12,570 SF AVAILABLE





CITY INFO

FOR LEASE
1,800 SF - 12,570 SF AVAILABLE

St. Michael is a growing community centrally located in the heart of Minnesota along I-94, only 25 minutes to downtown Minneapolis and 35 minutes to St. Cloud. The convenient location offers a small-town feel with safe neighborhoods, good schools, abundant parks, lakes and natural resources; making it a great place to live and raise a family. St. Michael was incorporated as a city in 1890 and currently has a population of 19,029.

St. Michael offers year-round opportunities for residents and businesses alike. Home to numerous large and small businesses, the new Town Center Park, 2,500 acre Crow Hassan Park Reserve, numerous parks and trail systems, two 18-hole golf courses and located within minutes of the Albertville Premium Outlet mall, St. Michael is a great place to call home. The St. Michael Public School District is ranked #16 in the state by U.S. News, making it a top choice for families to send their children.

St. Michael is ranked the #3 best city to live in MN, according to an article released from Life in Minnesota . St. Michael has a medium income near \$86,000 annually and unemployment is low at just a 4.8 percent. St. Michael's cost of living is average for the state average, making it an affordable city to live in with access to excellent school districts and parks.

The City of St. Michael scores high on livability ratings, where it's considered exceptional according to Area Vibes. Crime rates are four percent lower than the Minnesota average.

DEMOGRAPHICS / TRAFFIC COUNTS:

St Michael Population - (5 miles)

2028 Projected - 49,976

2023 Estimate - 47,199

2010 Census - 37,248

2023 Avg Household Income - (5 miles) \$127,855

Traffic Counts

Central Ave. - 19,363 Vehicles Per Day

Contact

Phone: 763.424.6355

Fax: 763.424.7980

Arrow Companies

7365 Kirkwood Court N. Suite 335

Maple Grove, MN 55369