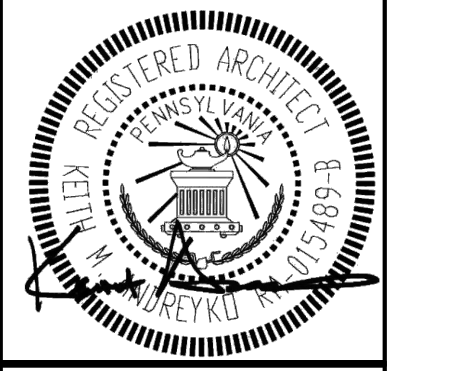


These drawings are instruments of the Architect's and Interior Design services and are the property of Integrity Design, LLC. They shall not be reproduced or used in any way without written permission of Integrity Design, LLC.



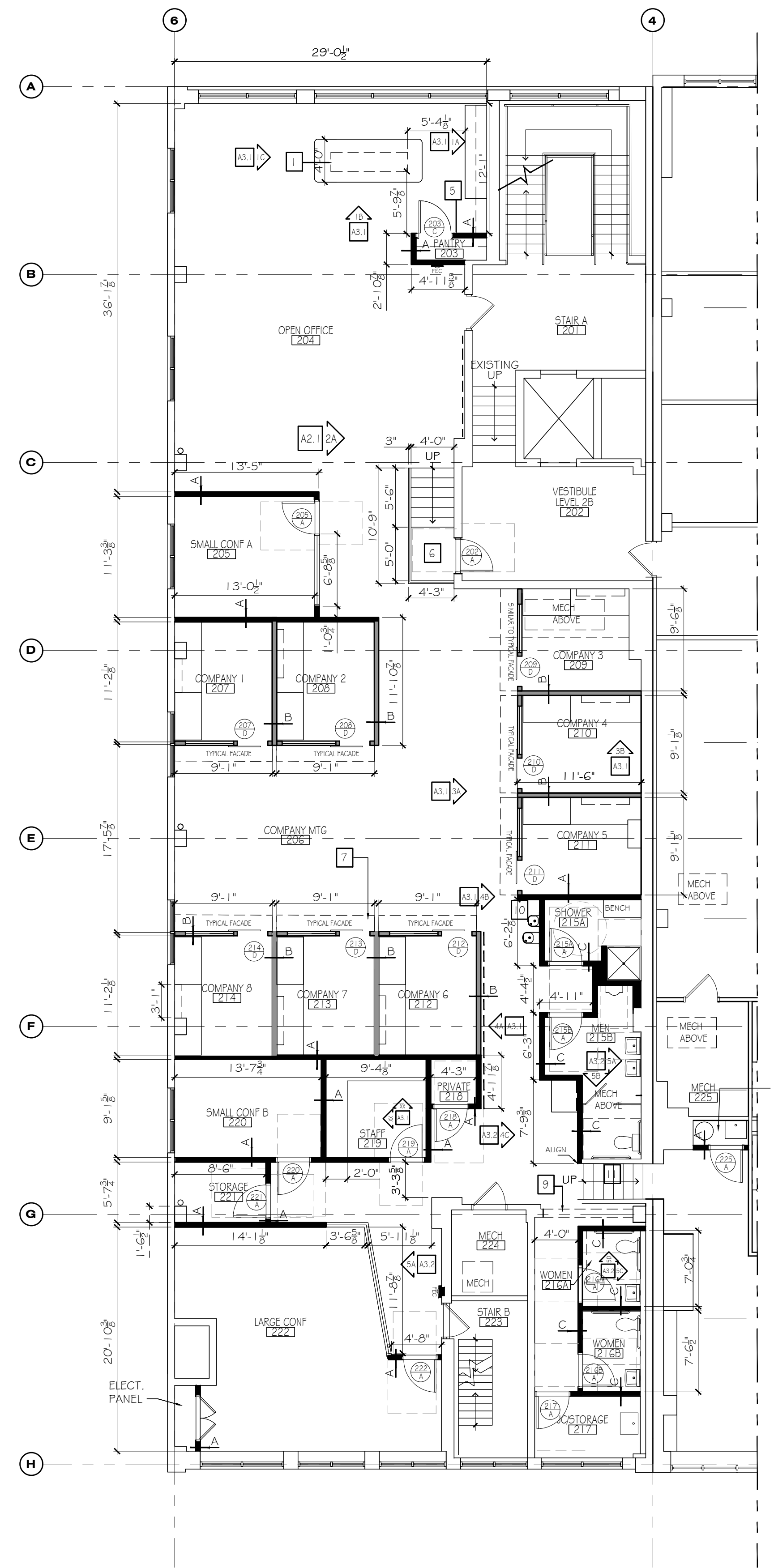
REVISIONS:

PROPOSED SECOND FLOOR RENOVATION:
AlphaLab
 6024 BROAD STREET
 PITTSBURGH, PA 15206

INTEGRITY DESIGN
 ARCHITECTURE & INTERIORS
 468 Washington Avenue Suite 100
 Bridgeville, PA 15017
 412-220-7822 P 412-220-7821 F

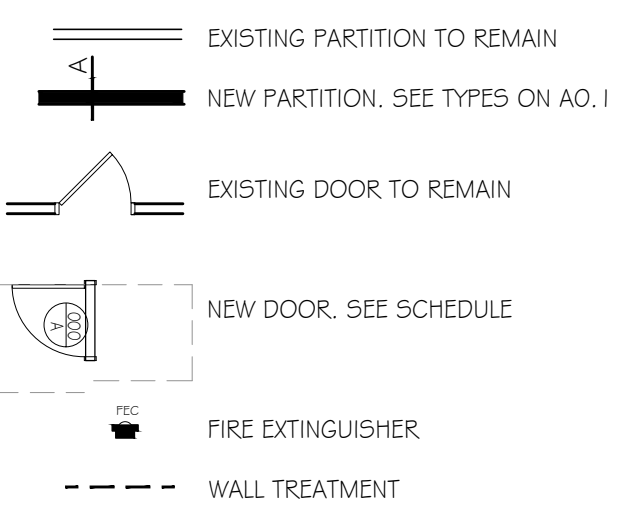


DATE:
22 JUNE 2018
 PROJECT NO.
2018-013
SECOND FLOOR
NEW WORK PLAN
 SHEET NO.
A1.1



SECOND FLOOR NEW WORK PLAN
 SCALE: 1/8" = 1'-0"
 1A
 A1.1

NEW WORK LEGEND



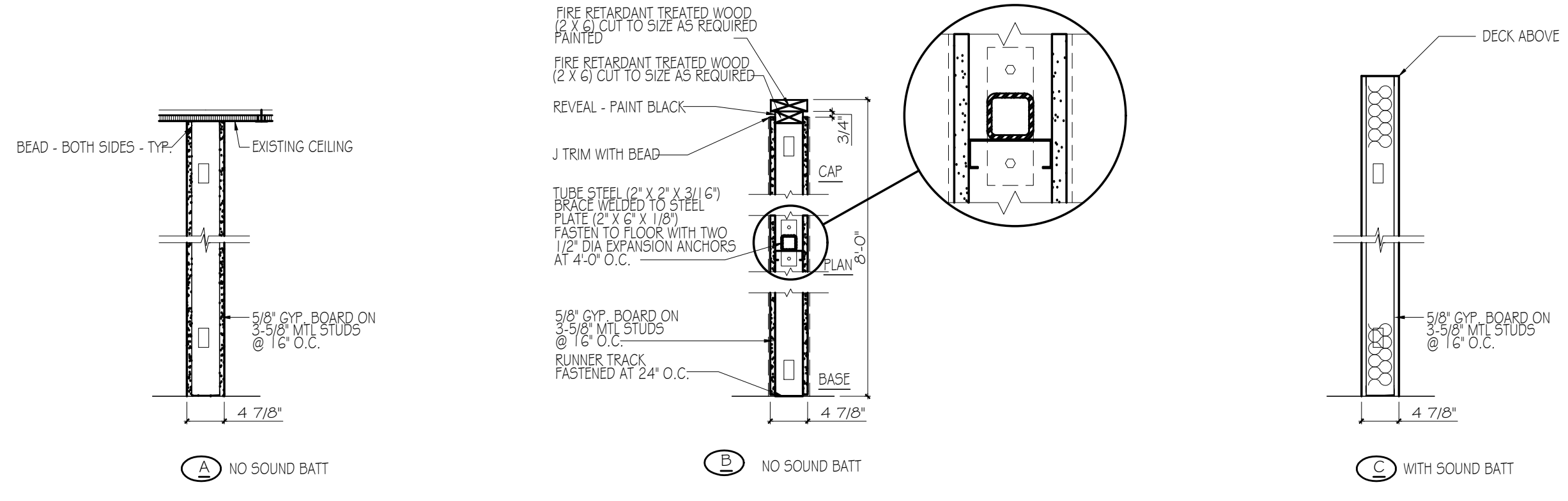
NEW WORK GENERAL NOTES

- DIMENSIONS INDICATED ARE TO ONE OF THE FOLLOWING UNLESS OTHERWISE NOTED:
 1a. FACE OF MASONRY
 1b. FINISHED GWB
- REFER TO SHEET AO.1 FOR PARTITION TYPES.
- COMPLETELY REMOVE ALL EXISTING FLOOR COVERING THROUGHOUT.
 PROVIDE SKIM COAT OF FLOOR LEVELER AS NEEDED TO RECEIVE NEW CARPET TILE AND LVT.
- SEE SHEET A4.1 FOR SCHEDULES AND FINISH LEGEND

NEW WORK KEY NOTES

- PROVIDE CAFE ISLAND. SEE CASEWORK DRAWINGS FOR DETAILS.
- TYPICAL FACADE AT EACH COMPANY SPACE WITH HAVE (1) SLIDING GLASS DOOR, (1) 8' PARTITION WITH AN AWNING, (2) FIXED GLASS PANELS. SEE ELEVATIONS FOR DETAILS.
- APPLY MARKER BOARD LAMINATE. TYPICAL FOR ALL 8 COMPANY SPACES. SEE ELEVATION FOR DETAILS.
- BRICK WALLS...
- PROVIDE AND INSTALL 5 ADJUSTABLE SHELVES IN THE PANTRY.
- PROVIDE AND INSTALL NEW STAIR TO BE CONSTRUCTED OF METAL. SEE ELEVATION FOR DETAILS.
- CONSTRUCT A 1'-6" OVERHANG ON THE FACADE OF EACH COMPANY SPACE. TYPICAL OF ALL 8 COMPANY SPACES.
- PROVIDE AND INSTALL BUILT-IN DESKS. SEE A3.1 FOR ELEVATIONS.
- EXPOSE EXISTING STEEL FRAME. REPAIR AS NEEDED AND PAINT
- PROVIDE HILO WATER FOUNTAIN
- ADD HANDRAIL TO EXISTING STAIR

RELOCATE SINK & WATER HEATER



PARTITION TYPES
 SCALE: 3/4" = 1'-0"
 1B
 A1.1