



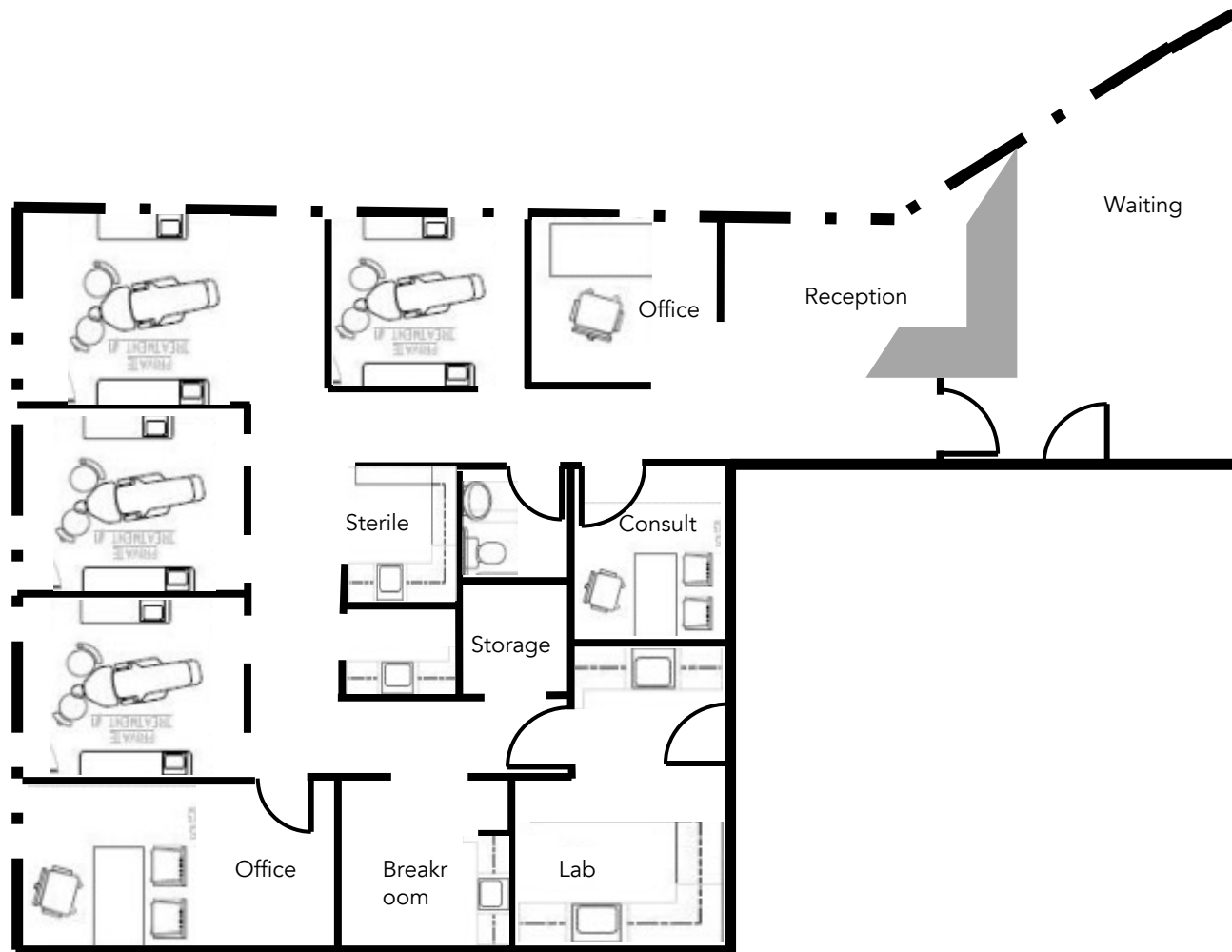
# CLARKSON MEDICAL & DENTAL CENTERS

3601 & 3701 S. CLARKSON STREET, ENGLEWOOD, CO 80113

2,083 SQFT

## SUITE

- FULL BUILD OUT, RECONFIGURATIONS AVAILABLE
- 4 EXAM ROOMS, LAB, STERILE, CONSULT, BREAK AND PRIVATE OFFICE
- 6: 1,000 PARKING RATIO
- RESERVED PARKING SPOTS AVAILABLE
- FEATURES LOTS OF NATURAL LIGHT
- ONSITE PROPERTY MANAGEMENT
- NEW BUILDING OWNERSHIP AND MANAGEMENT
- NOTE: RESTROOM IN SUITE IS NON-CONFORMING. ACCESSIBLE RESTROOMS ARE AVAILABLE ON EACH FLOOR OF THE BUILDING.
- NOTE: OFFICE CAN BE CONVERTED TO 5TH EXAM ROOM



FOR MORE INFORMATION PLEASE CALL

303-781-9930