



Office & Medical Space for Lease

Sherman's Corners Professional Park

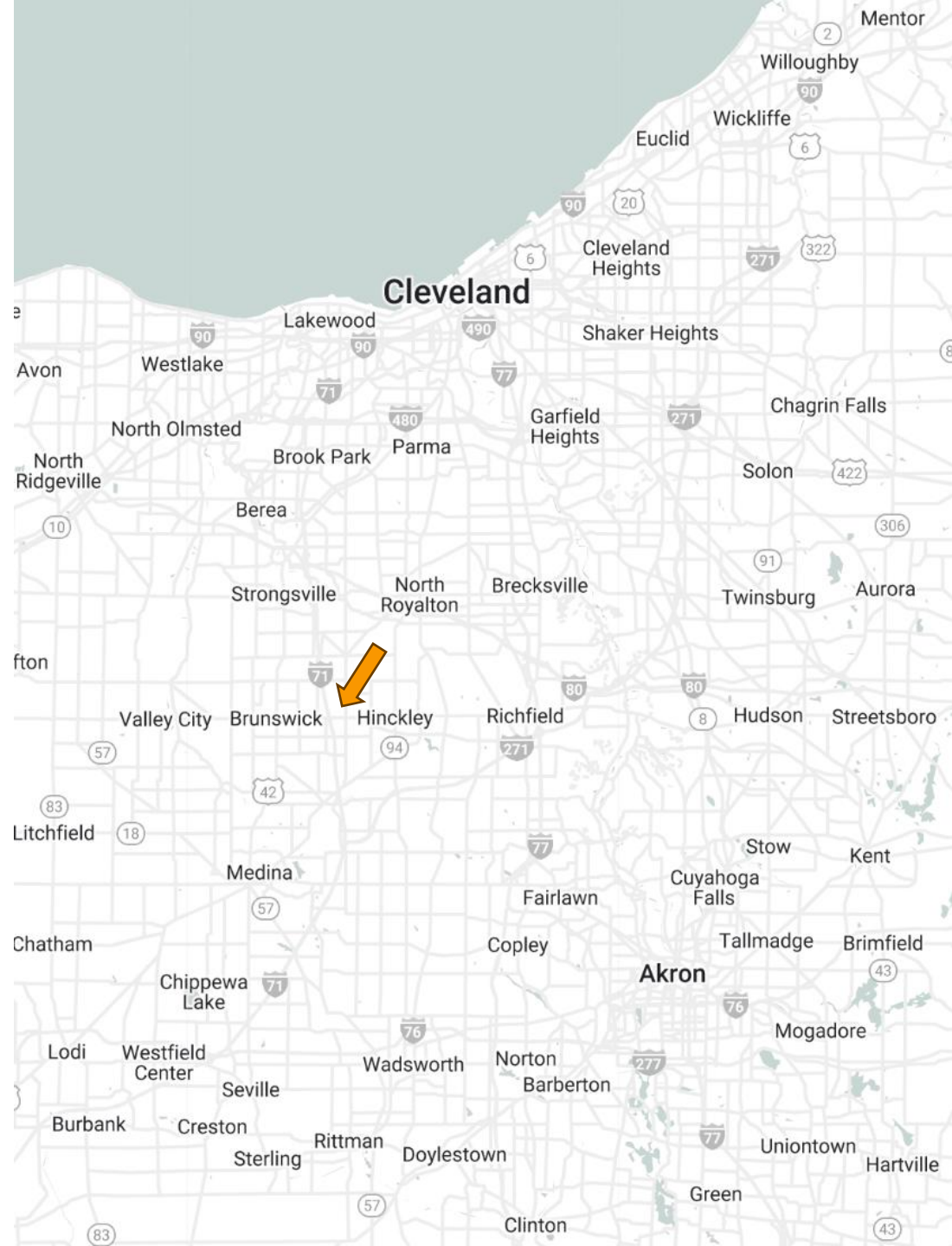
2865-2875 Center Road Brunswick, Ohio 44212

2865-2875 Center Road
Brunswick, OH 44212

Highlights

- Beautiful park like setting
- Abundant parking
- Local Ownership
- Suites customized to your specifications
- Well connected to I-71 making it easy for customers and employees to access
- Excellent co-tenancy with dermatology, dental, & financial services
- 240,000 people within 150-minute drive
- \$103,000 average income within 3-miles

Suite	SF
#1	2,644 SF
#5	2,260 SF







Medina
County
Auto Title



Suite 5
2,260SF



Suite 1
2,644 SF



10,000+ Cars Per Day



Sherman's Corners
Professional Park



SHERWIN
WILLIAMS

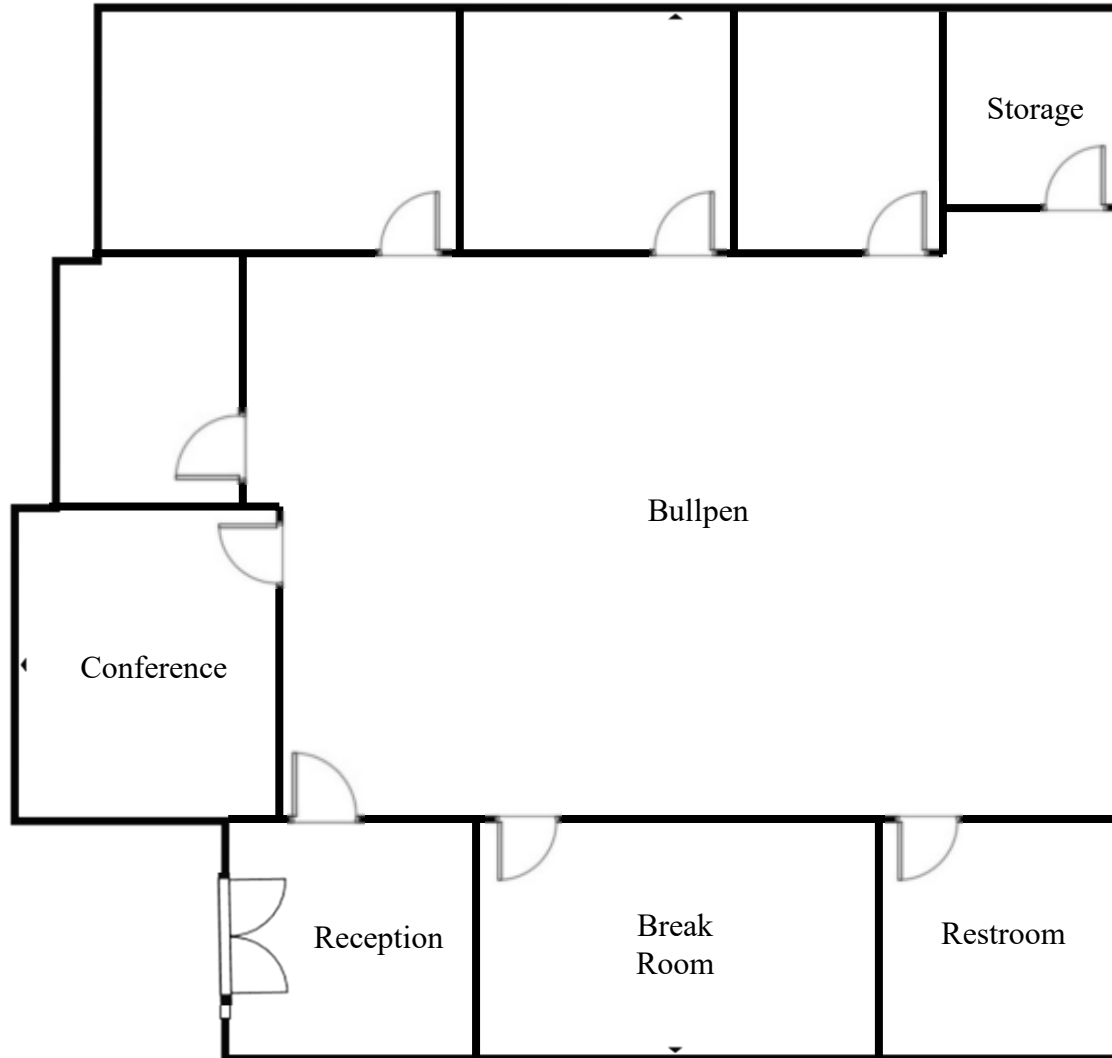




2865-2875 Center Road
Brunswick, OH 44212



Suite 1
2,644 SF



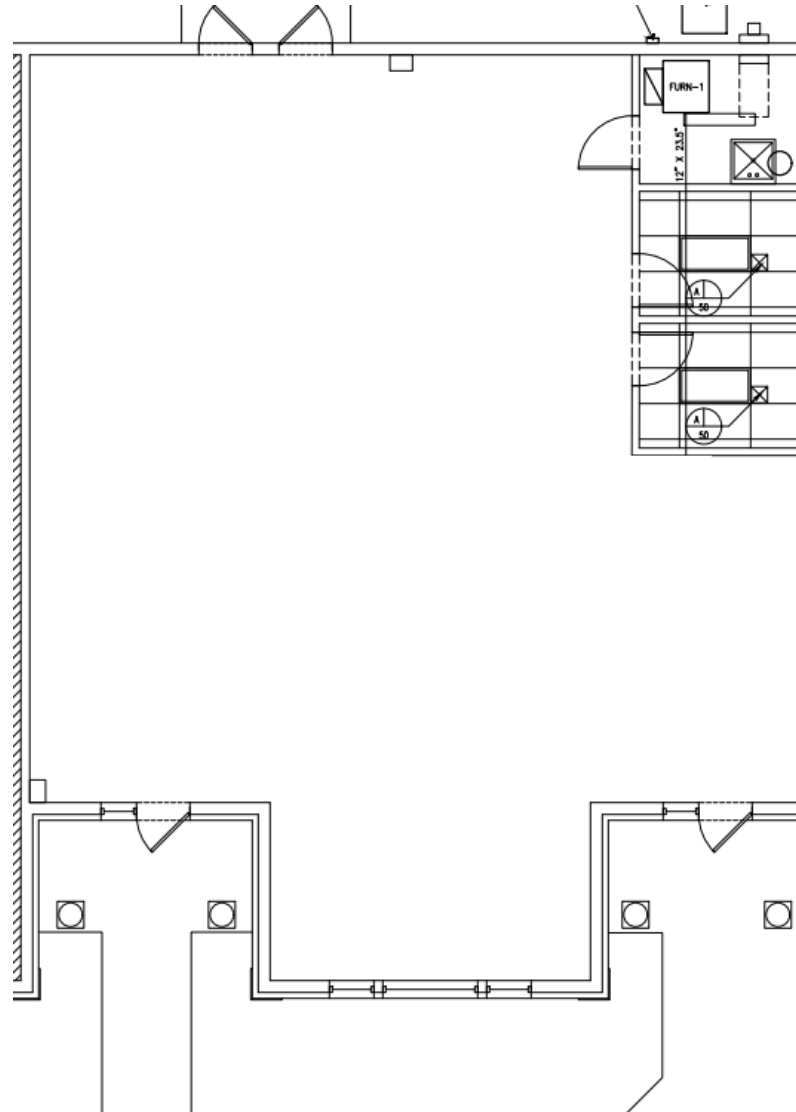
*Floor plans can be customized to tenant specifications.

Eric Purcell
Director
216-245-3343
eric@citiroc.com

2865-2875 Center Road
Brunswick, OH 44212



Suite 5
2,260 SF



Eric Purcell
Director
216-245-3343
eric@citiroc.com