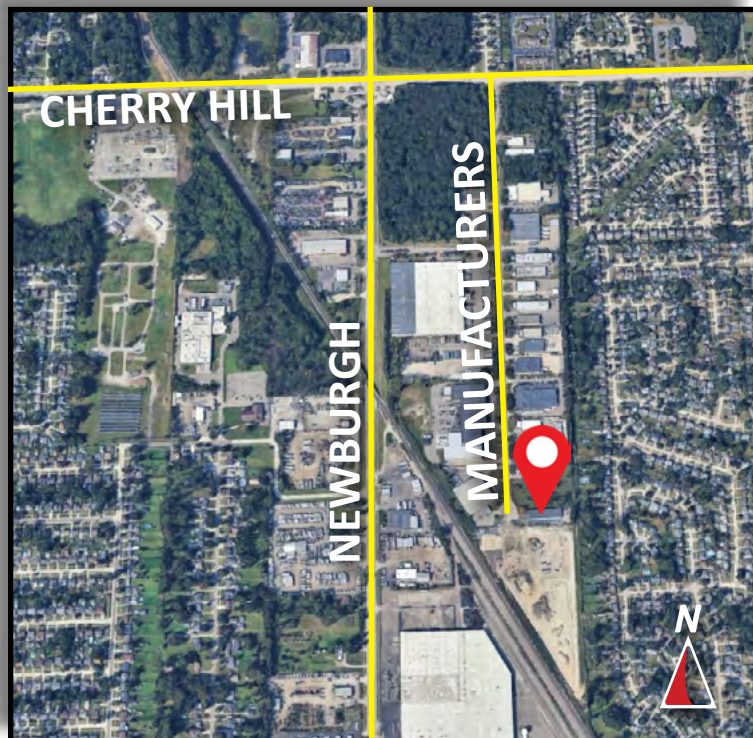


# Burger

& COMPANY

## FOR LEASE

1157 Manufacturers Drive  
Westland, Michigan  
12,882 Square Feet



- 12,882 square feet for lease
- Fenced yard!
- Clear span warehouse
- Bonus mezzanine space not included in the total square footage
- Two (2) grade level doors, 12'x12' and 12'x14'
- 15' 6" clear height
- Quick access to I-275, I-94, Michigan Avenue, Ford Road, and Telegraph Road
- Lease rate: \$7.25 PSF NNN

**Burger & Company**

Jack Bushart  
Senior Associate  
Cell: 734.890.4609  
jack@burgercollc.com

Nicolo Burger, SIOR, CCIM  
Vice President  
Cell: 810.224.8103  
nic@burgercollc.com

248.536.2888  
www.burgercollc.com  
38345 W. 10 Mile Road, Suite 100  
Farmington Hills, MI 48335

Information contained herein is deemed to be reliable but is not guaranteed and may be withdrawn at any time.

# FOR LEASE

1157 Manufacturers Drive  
Westland, MI



## BUILDING SPECIFICATIONS

<b>Location</b>	Newburgh & Cherry Hill	<b>Total Building Square Feet</b>	12,882 SF
<b>County</b>	Wayne	<b>Office Square Feet</b>	880 SF
<b>Zoning</b>	I-1 Light Industrial	<b>Warehouse Square Feet</b>	12,002 SF
<b>Lot Size</b>	.86 acres	<b>Year Built</b>	1988
<b>Construction</b>	Block	<b>Roof</b>	Flat
<b>Clear Height</b>	15' 6"	<b>Grade Level Doors</b>	One (1) 12'x12' & One (1) 12'x14'
<b>Cranes</b>	No	<b>Dock Doors</b>	No
<b>Lighting</b>	LED	<b>Power</b>	To be verified
<b>Heating</b>	Gas forced air units	<b>Sprinklers</b>	No
<b>Warehouse A/C</b>	No	<b>Railroad</b>	No
<b>Buss Duct</b>	No	<b>Signage</b>	Yes
<b>Parking</b>	Ample	<b>Restrooms</b>	Yes
<b>Clear Span</b>	Yes	<b>Freestanding</b>	Yes

### Description

- 12,882 square feet for lease
- Fenced yard!
- Clear span warehouse
- Bonus mezzanine space not included in the total square footage
- Two (2) grade level doors, 12'x12' and 12'x14'
- 15' 6" clear height
- Quick access to I-275, I-94, Michigan Avenue, Ford Road, and Telegraph Road
- Lease rate: \$7.25 PSF NNN

<b>Lease Rate</b>	\$7.25 PSF
<b>Monthly</b>	\$7,782.87
<b>Lease Type</b>	NNN

**Burger**

& COMPANY

Jack Bushart  
Senior Associate  
Cell: 734.890.4609  
jack@burgercollc.com

Nicolo Burger, SIOR, CCIM  
Vice President  
Cell: 810.224.8103  
nic@burgercollc.com

248.536.2888  
www.burgercollc.com  
38345 W. 10 Mile Road, Suite 100  
Farmington Hills, MI 48335

Information contained herein is deemed to be reliable but is not guaranteed and may be withdrawn at any time.



# FOR LEASE

1157 Manufacturers Drive  
Westland, MI

---



**Burger**

& COMPANY

Jack Bushart  
Senior Associate  
Cell: 734.890.4609  
jack@burgercollc.com

Nicolo Burger, SIOR, CCIM  
Vice President  
Cell: 810.224.8103  
nic@burgercollc.com

248.536.2888  
www.burgercollc.com  
38345 W. 10 Mile Road, Suite 100  
Farmington Hills, MI 48335

Information contained herein is deemed to be reliable but is not guaranteed and may be withdrawn at any time.