

# FOR LEASE – CORKTOWN RETAIL SPACE

## PREMIER FIRST FLOOR RETAIL OPPORTUNITY

2050 8<sup>th</sup> ST & 2100 TRUMBULL | DETROIT, MI



2050 8<sup>th</sup> ST  
4,047 SF AVAILABLE

2100 TRUMBULL  
1,161 SF AVAILABLE

**ALAN STERN**  
SENIOR VICE PRESIDENT | BROKERAGE SERVICES  
P: 248.848.4119 E: ALAN.STERN@FREG.COM

**ANDREW J. BOWER**  
SENIOR ASSOCIATE | BROKERAGE SERVICES  
P: 248.848.4193 E: ANDREW.BOWER@FREG.COM

# ELTON PARK RETAIL SPACE

## PROPERTY HIGHLIGHTS

- Up to 4,097 SF of 1st Floor Retail Space Available
- Elton Park Corktown features 151 residential units across five blocks and six buildings
- **2050 8th Street:** 4,047 SF retail space, ideal for food and beverage operator
- **2100 Trumbull:** 1,161 SF retail space, white boxed
- Close proximity to Ford's Michigan Central (5,000 Employees), The Godfrey Hotel, and Perennial Corktown
- Nearby Tenants include Hamilton's, Memento Gelato, Ottawa Via, McShane's Irish Pub, Ima, Slows BBQ, Corktown Taphouse, and many others
- Lease Rate: Contact Broker



|  |                       |
|--|-----------------------|
| eCode                                  | <b>184</b>            |
| Available SF (2050 8 <sup>th</sup> St) | <b>4,047 SF</b>       |
| Available SF (2100 Trumbull)           | <b>1,161 SF</b>       |
| Property Type                          | <b>Retail</b>         |
| City                                   | <b>Detroit</b>        |
| Lease Rate                             | <b>Contact Broker</b> |

# SITE OVERVIEW



**The Corner Ballpark**

**2100 TRUMBULL**

**2050 8TH ST**

**THE CORNER MICHIGAN**

**CHASE**

**McShane's**

**OTTAWA VIA**

**Nemo's**

**SUBWAY**

**MICHIGAN AVE**

**THE GODFREY HAMILTON'S**

**Citizens Bank**

**Firestone COMPLETE AUTO CARE**

**PERENNIAL CORKTOWN**



*Motor City*  
CASINO-HOTEL

**CT**  
CASS TECHNICAL  
HIGH SCHOOL

MGM GRAND  
DETROIT

**The  
Corner Ballpark**

**2100 TRUMBULL**  
1,161 SF AVAILABLE

**2050 8<sup>TH</sup> ST**  
4,047 SF AVAILABLE

**±9,359**  
Vehicles Per Day

Ottava Via  
McShane's  
Momento  
Nemo's

**THE GODFREY**  
HAMILTON'S

**ima** IZAKAYA  
  
SUGAR HOUSE  
SLOWS  
SLOWS

**MICHIGAN  
CENTRAL**

**TRUMBULL & PORTER**  
— AN AUTHENTIC DETROIT HOTEL —

# ELTON PARK RETAIL SPACE

## AREA AMENITIES



### FOOD & DRINK

Bobcat Bonnie's  
Cork & Gable  
Folk Detroit  
Hamilton's  
James Oliver  
McShane's  
Mercury Bar  
Michigan & Trumbull  
Mink Detroit  
Mudgie's Deli  
Ottava Via  
Johnny Noodle King  
PJ's Lager House  
Slows Bar BQ  
Takoi  
The Brooklyn Street Local  
The Pink Flamingo  
Two James Distillery



### SHOPPING & ENTERTAINMENT

All Things Marketplace  
Detroit Dye House  
Detroit Wick  
Eldorado General Store  
Good Stuff Corktown  
Mama Coo's Boutique  
Of What Dreams Are Made  
Teezonus



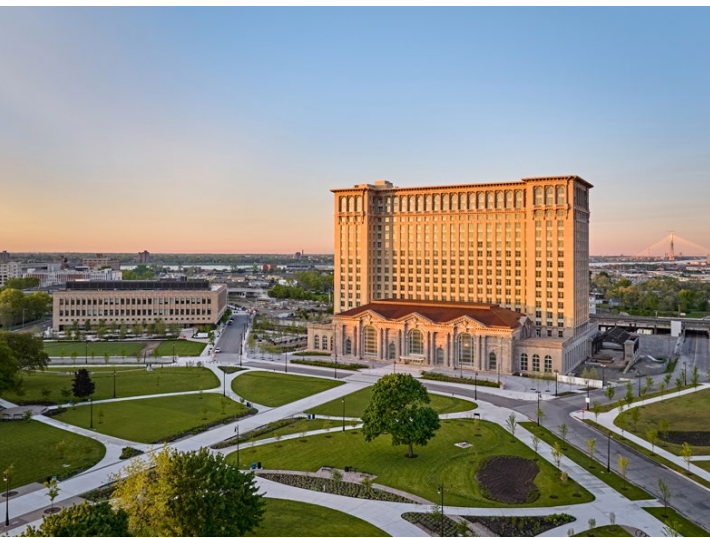
### FITNESS & RECREATION

Detroit Meditation & Yoga  
MGM Grand Fitness Center & Pool  
Planet Fitness  
Roberto Clemente Recreation Center  
The Corner Ballpark  
True Body Fitness



### LODGING

Motor City Casino Hotel  
MGM Grand Detroit Hotel  
Trumbull and Porter Hotel  
The Godfrey Detroit



## CORKTOWN

Located just west of downtown Detroit, Corktown is the city's oldest current neighborhood, with a rich history and distinct urban character. The area is named after County Cork in Ireland, reflecting the significant influx of Irish immigrants in the mid-19th century. The neighborhood is defined by its historic architecture, including Victorian-style homes, rowhouses, and a variety of commercial buildings.

The neighborhood has undergone significant revitalization and development in recent years, making it one of Detroit's most vibrant areas. Corktown is known for its trendy restaurants, bars, and boutique shops, which attract both locals and tourists alike. Major recent developments include The Godfrey Hotel, The Perennial apartment complex, and the renovation of the historic Michigan Central Station (which is being transformed into a hub for innovation by Ford Motor Company). This development has spurred further investment in the area, creating additional jobs and boosting the local economy.

Corktown's proximity to downtown Detroit provides easy access to major highways such as I-75 and I-96, facilitating travel throughout the metropolitan area. The neighborhood is also accessible by public transportation, with several bus routes running through the area. The Detroit People Mover, an elevated rail system, has a station nearby, connecting Corktown to other parts of the city. Additionally, the Detroit Metropolitan Wayne County Airport, located about 20 miles southwest of the neighborhood, offers extensive domestic and international flight services.

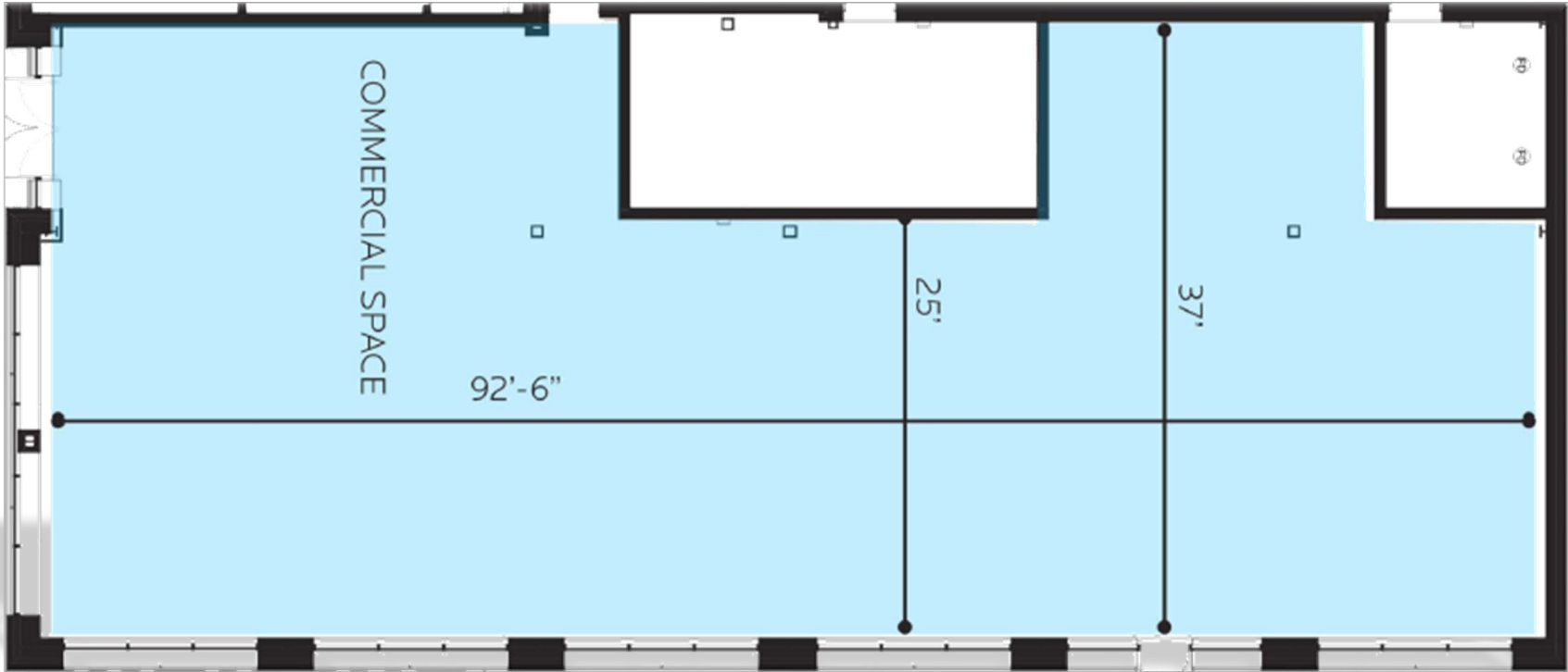
## DETROIT DEMOGRAPHICS

|  |          |
|--|----------|
| <b>ESTIMATED POPULATION (2022)</b>       | 636,787  |
| <b>HOUSEHOLDS (2022)</b>                 | 243,240  |
| <b>MEDIAN HH INCOME (2022)</b>           | \$37,761 |
| <b>POPULATION PER SQUARE MILE (2022)</b> | 4,456    |

**2050 8<sup>TH</sup> STREET**  
**ADDITIONAL PHOTOS**



**2050 8<sup>TH</sup> STREET**  
**FLOOR PLAN**



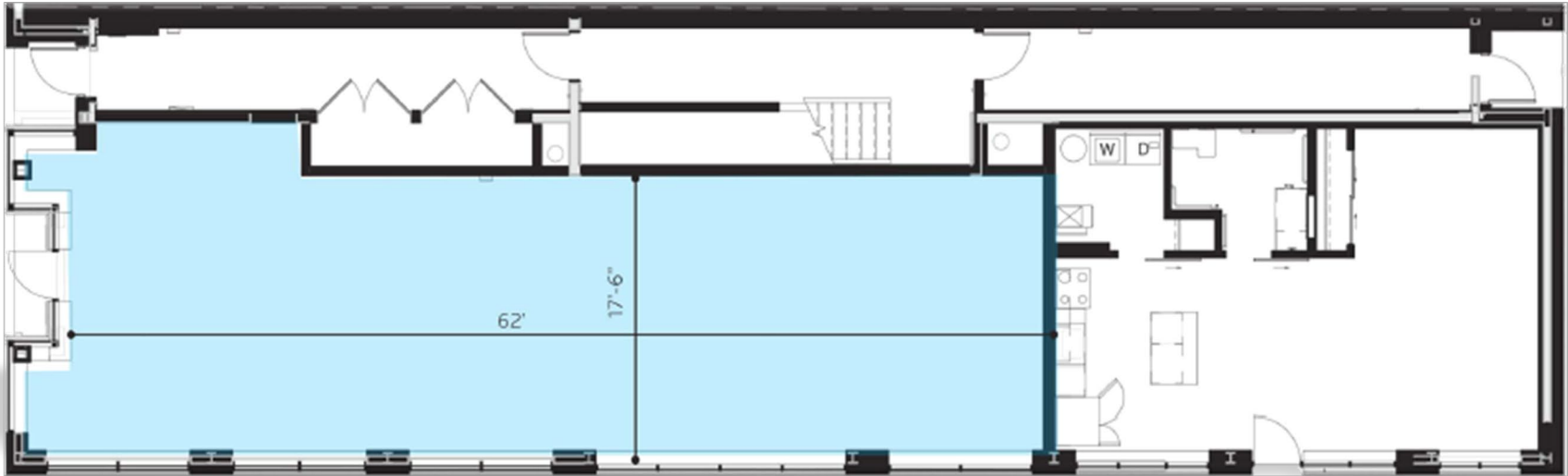
**2050 8<sup>TH</sup> STREET**



# 2100 TRUMBULL ADDITIONAL PHOTOS



**2100 TRUMBULL**  
**FLOOR PLAN**



**2100 TRUMBULL**

# CREATING VALUE BEYOND REAL ESTATE



**ALAN STERN** | SENIOR VICE PRESIDENT | BROKERAGE SERVICES  
**ANDREW J. BOWER** | SENIOR ASSOCIATE | BROKERAGE SERVICES

FRIEDMAN REAL ESTATE | 34975 W. 12 MILE ROAD | FARMINGTON HILLS, MI 48331 | FRIEDMANREALESTATE.COM

