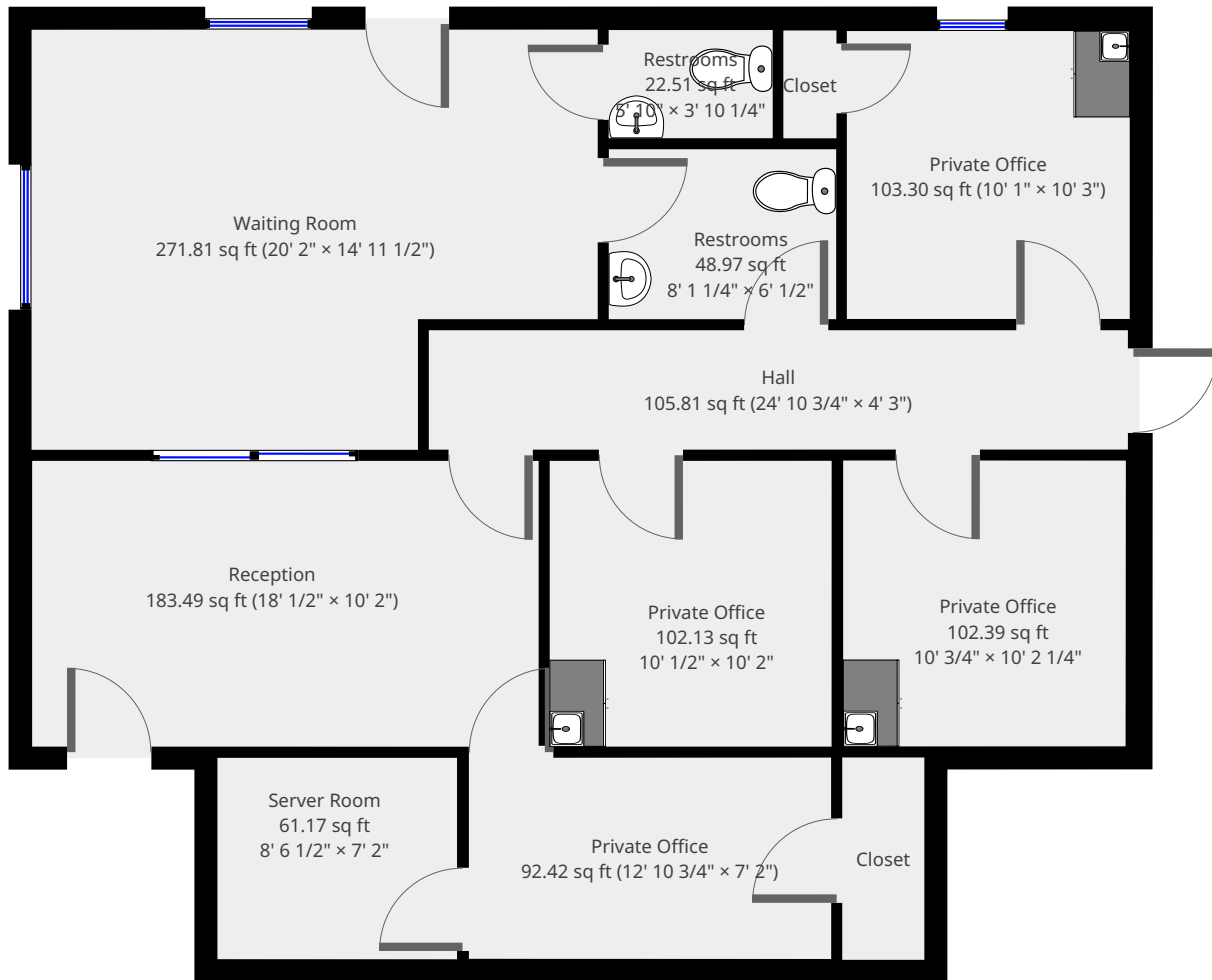


1220 Walter Reed Rd, Fayetteville - Back Left

Statistics

Area: 1307 sq ft
1 Floor
4 Offices
0 Conf. room

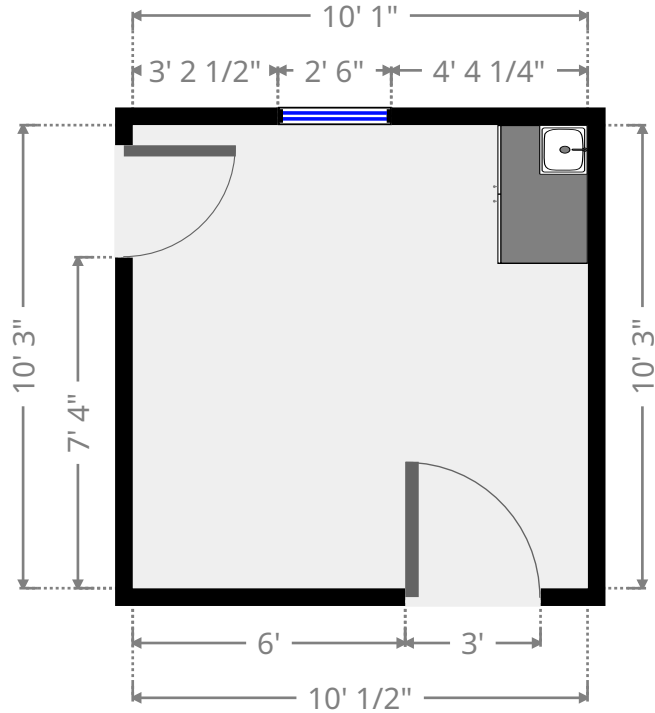
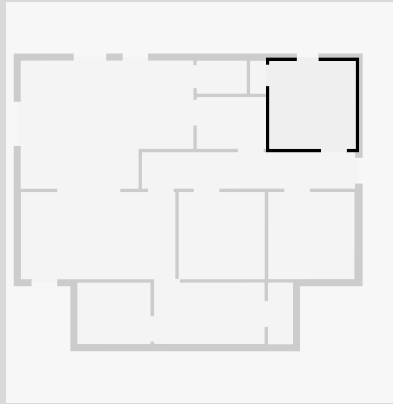
Ground Floor



1220 Walter Reed Rd, Fayetteville - Back Left

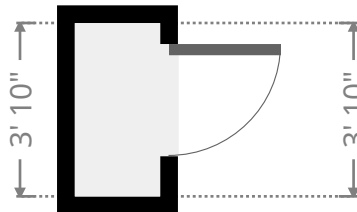
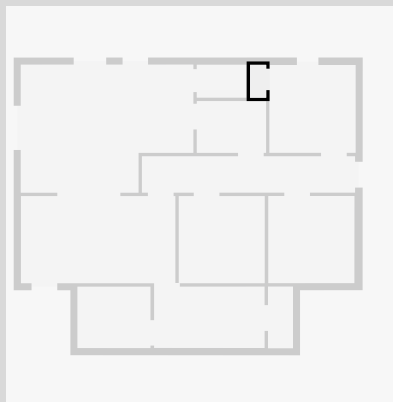
Private Office

Width: 10' 1"
Length: 10' 3"
Area: 103.30 sq ft
Perimeter: 40' 7 3/4"



Closet

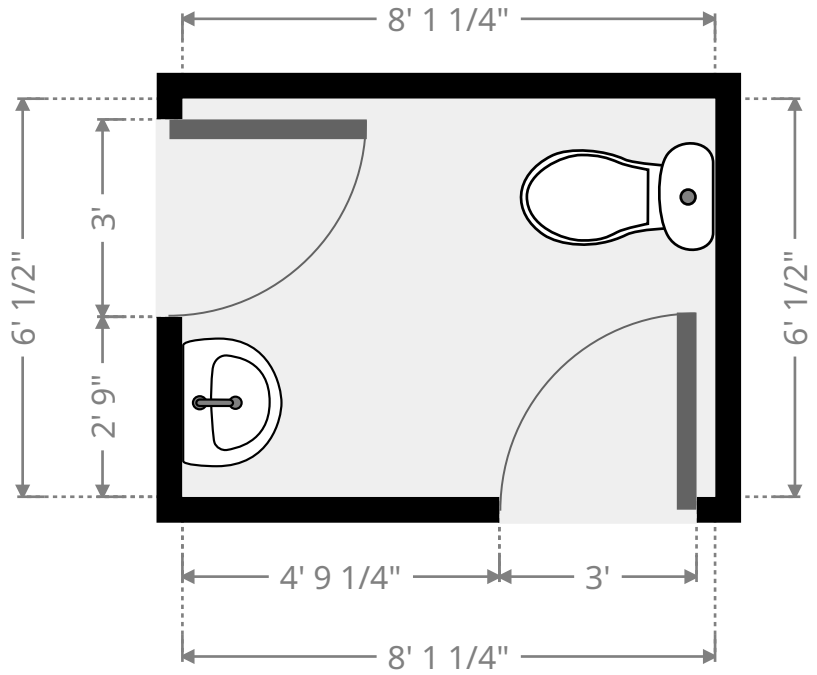
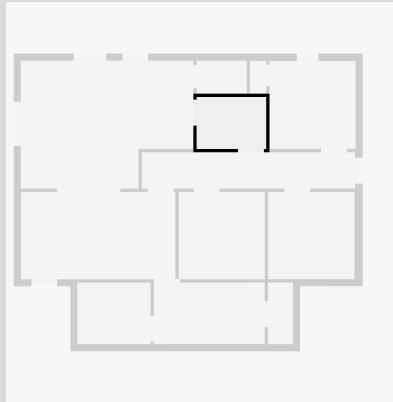
Width: 1' 10 3/4"
Length: 3' 10"
Area: 7.25 sq ft
Perimeter: 11' 5 1/2"



1220 Walter Reed Rd, Fayetteville - Back Left

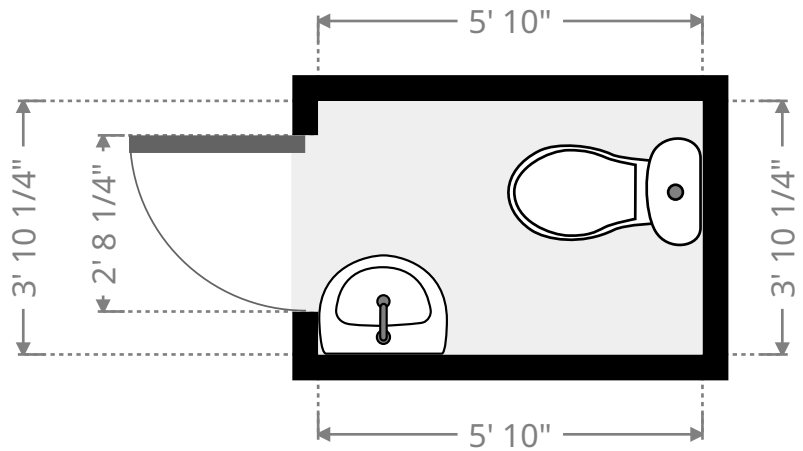
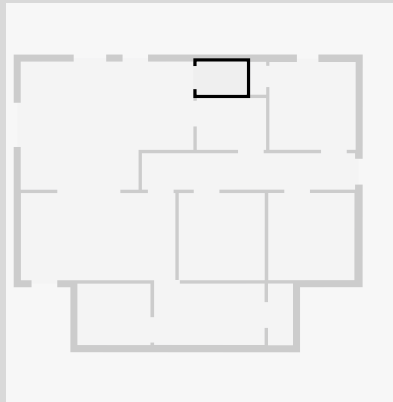
Restrooms

Width: 6' 1/2"
 Length: 8' 1 1/4"
 Area: 48.97 sq ft
 Perimeter: 28' 3 1/2"



Restrooms

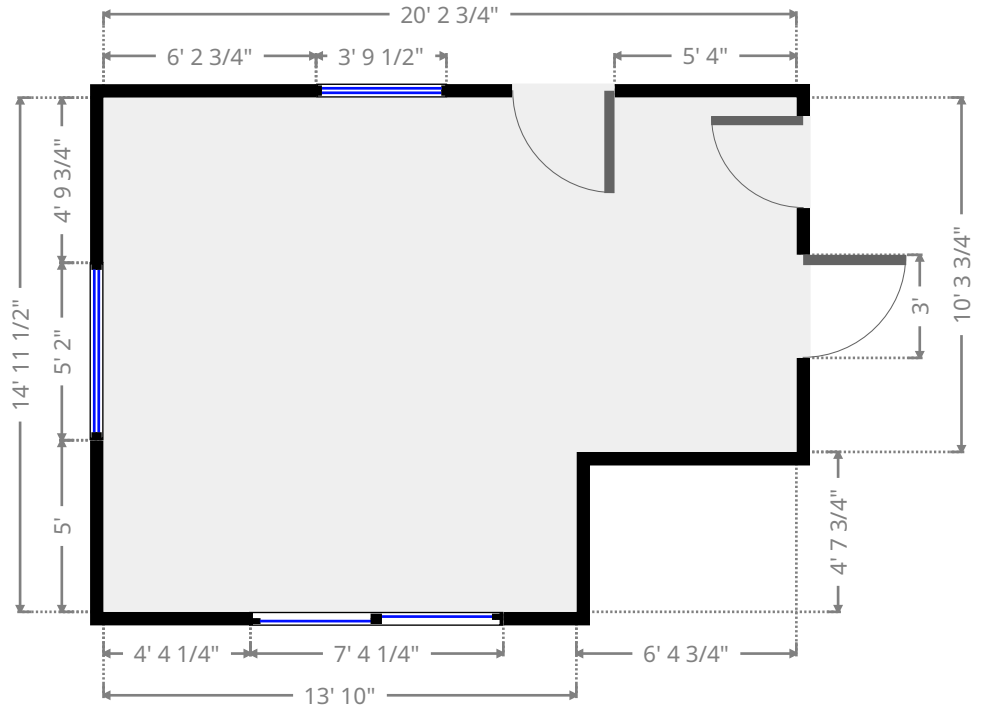
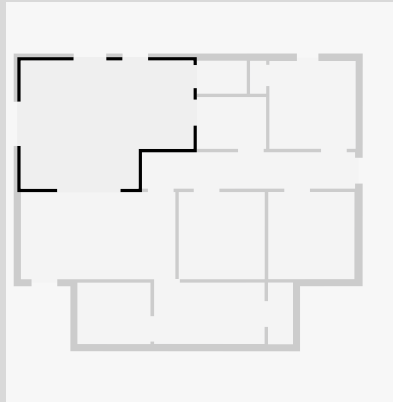
Width: 3' 10 1/4"
 Length: 5' 10"
 Area: 22.51 sq ft
 Perimeter: 19' 4 3/4"



1220 Walter Reed Rd, Fayetteville - Back Left

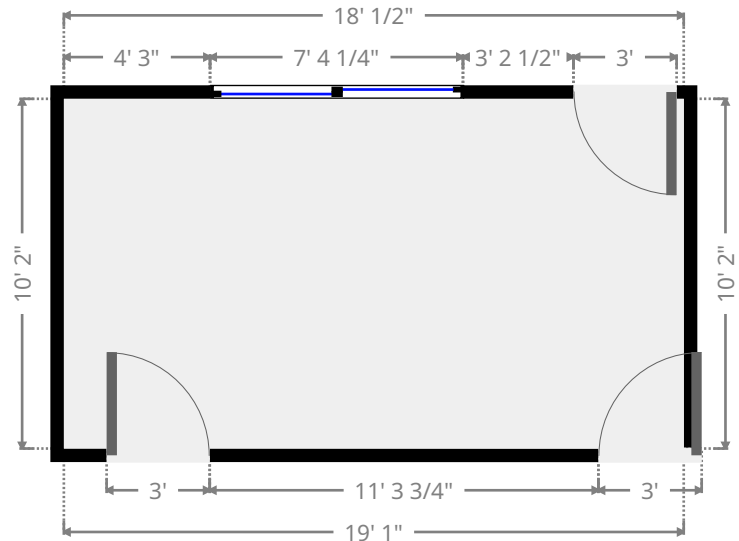
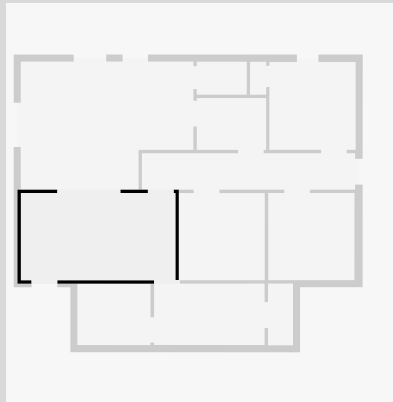
Waiting Room

Width: 14' 11 1/2"
 Length: 20' 2"
 Area: 271.81 sq ft
 Perimeter: 70' 2 3/4"



Reception

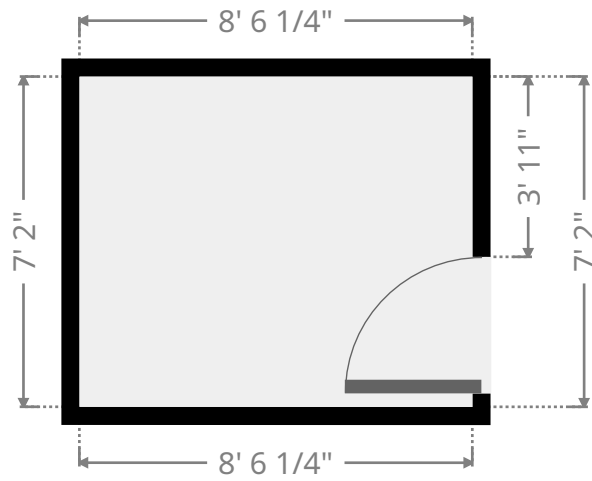
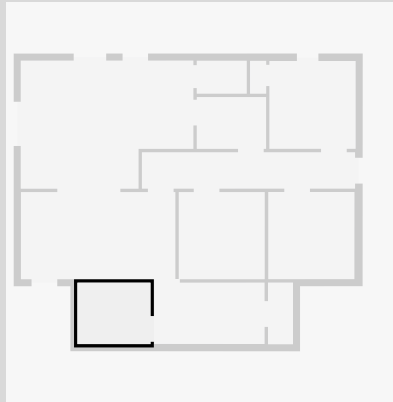
Width: 10' 2"
 Length: 18' 1/2"
 Area: 183.49 sq ft
 Perimeter: 56' 5"



1220 Walter Reed Rd, Fayetteville - Back Left

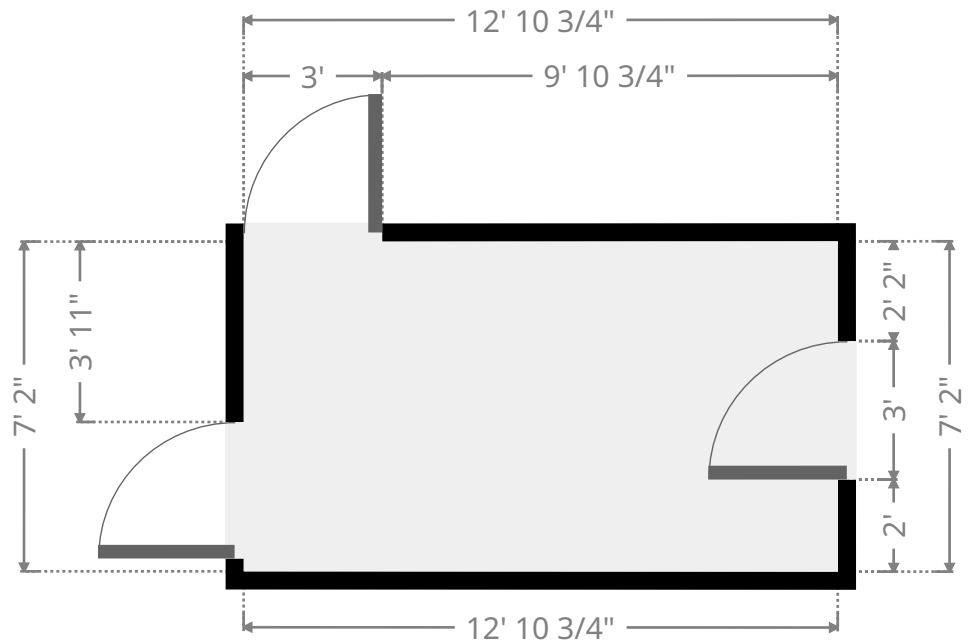
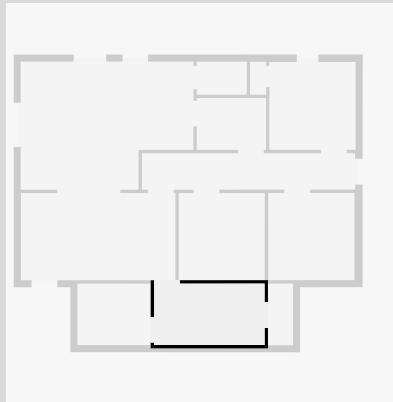
Server Room

Width: 7' 2"
 Length: 8' 6 1/2"
 Area: 61.17 sq ft
 Perimeter: 31' 4 3/4"



Private Office

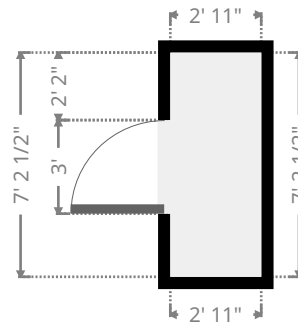
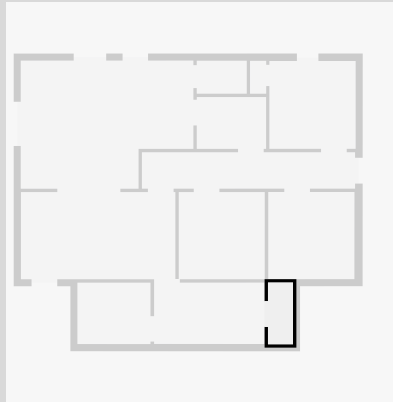
Width: 7' 2"
 Length: 12' 10 3/4"
 Area: 92.42 sq ft
 Perimeter: 40' 1 1/2"



1220 Walter Reed Rd, Fayetteville - Back Left

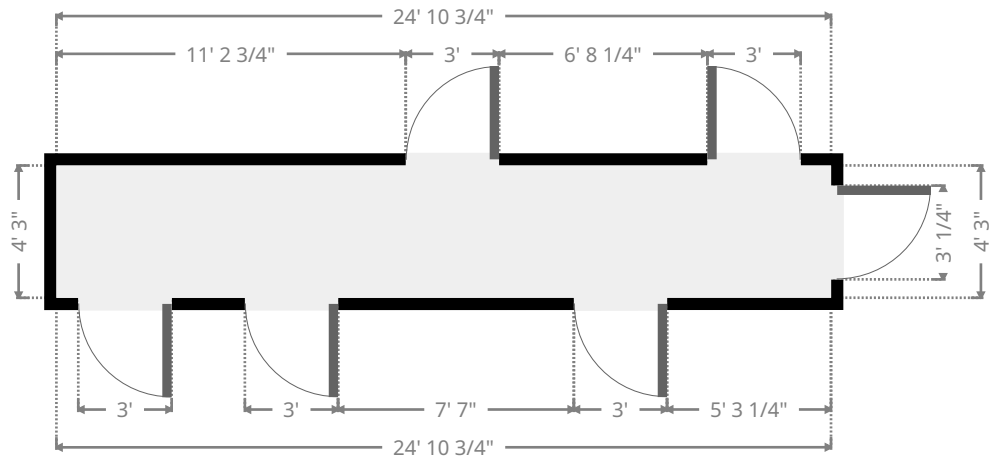
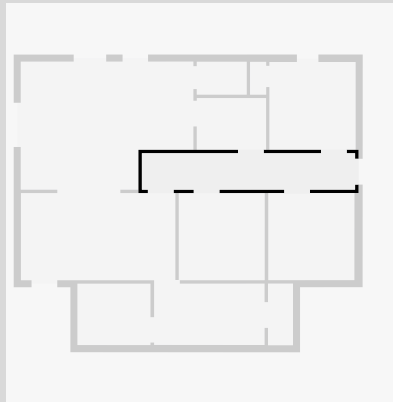
Closet

Width: 2' 11"
 Length: 7' 2 1/2"
 Area: 21.05 sq ft
 Perimeter: 20' 3"



Hall

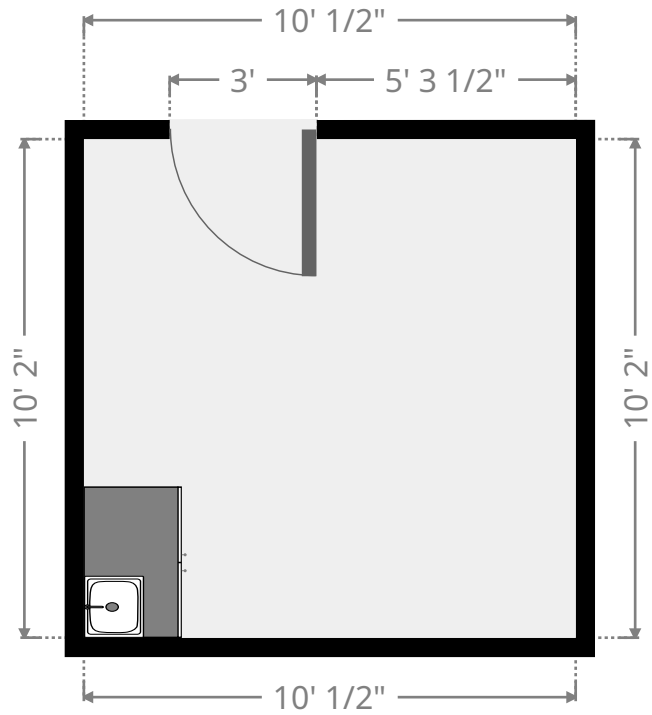
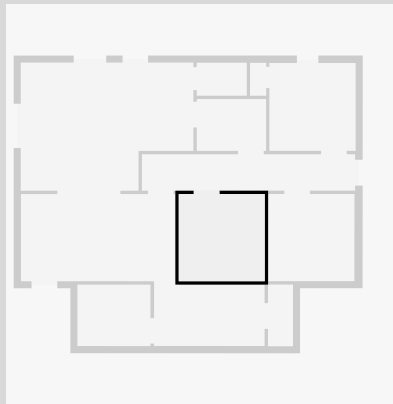
Width: 4' 3"
 Length: 24' 10 3/4"
 Area: 105.81 sq ft
 Perimeter: 58' 3 1/2"



1220 Walter Reed Rd, Fayetteville - Back Left

Private Office

Width: 10' 1/2"
Length: 10' 2"
Area: 102.13 sq ft
Perimeter: 40' 5"



Private Office

Width: 10' 3/4"
Length: 10' 2 1/4"
Area: 102.39 sq ft
Perimeter: 40' 5 3/4"

