



## Commerce Point

- Office/flex business park
- Flex space available with grade level access and loading
- On-site management office and building engineer
- Security guard on-site from 7:00pm - 1:00am
- Zoning - IND-2/IND-3
- Within close proximity to SR 528, Interstate-4, the Florida Turnpike, and other major thoroughfares



Efficient floor plans



Abundant parking



Multiple restaurants within  
1 mile of the property

### For further information

**Lisa Bailey, SIOR**

Principal  
+1 407 440 6645  
lisa.bailey@avisonyoung.com

**Emily Zinaich**

Senior Vice President  
+1 407 440 6641  
emily.zinaich@avisonyoung.com

avisonyoung.com



**Available Spaces**

Building	Suite	Square Footage	Condition
7550	100	8,215± sf	100% office
7558	100	7,782± sf	Office/warehouse
7558	102 - 120	1,806 - 5,546± sf	Office/warehouse
7566	102	2,443± sf	100% office
7616	110	3,752±sf	Office/warehouse
7632	105	2,933± sf	100% office

**For further information**

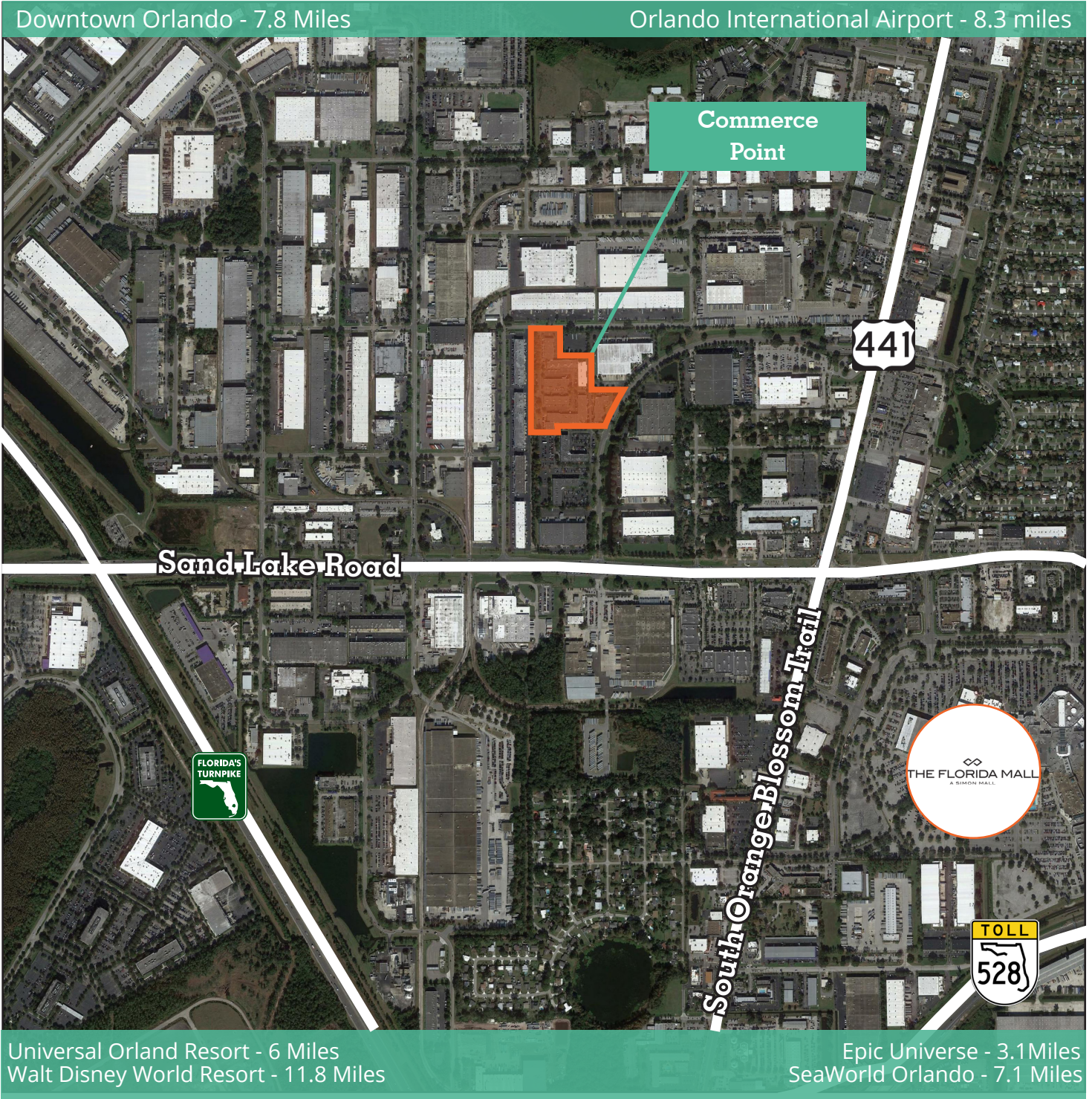
**Lisa Bailey, SIOR**  
Principal  
+1 407 440 6645  
lisa.bailey@avisonyoung.com

**Emily Zinaich**  
Senior Vice President  
+1 407 440 6641  
emily.zinaich@avisonyoung.com

avisonyoung.com

Office/Flex Space | For Lease

Commerce Point  
7550-7648 Southland Blvd  
Orlando, FL 32809



**For further information**

**Lisa Bailey, SIOR**  
Principal  
+1 407 440 6645  
lisa.bailey@avisonyoung.com

**Emily Zinaich**  
Senior Vice President  
+1 407 440 6641  
emily.zinaich@avisonyoung.com

avisonyoung.com

Office/Flex Space | For Lease

Commerce Point  
7550-7648 Southland Blvd  
Orlando, FL 32809

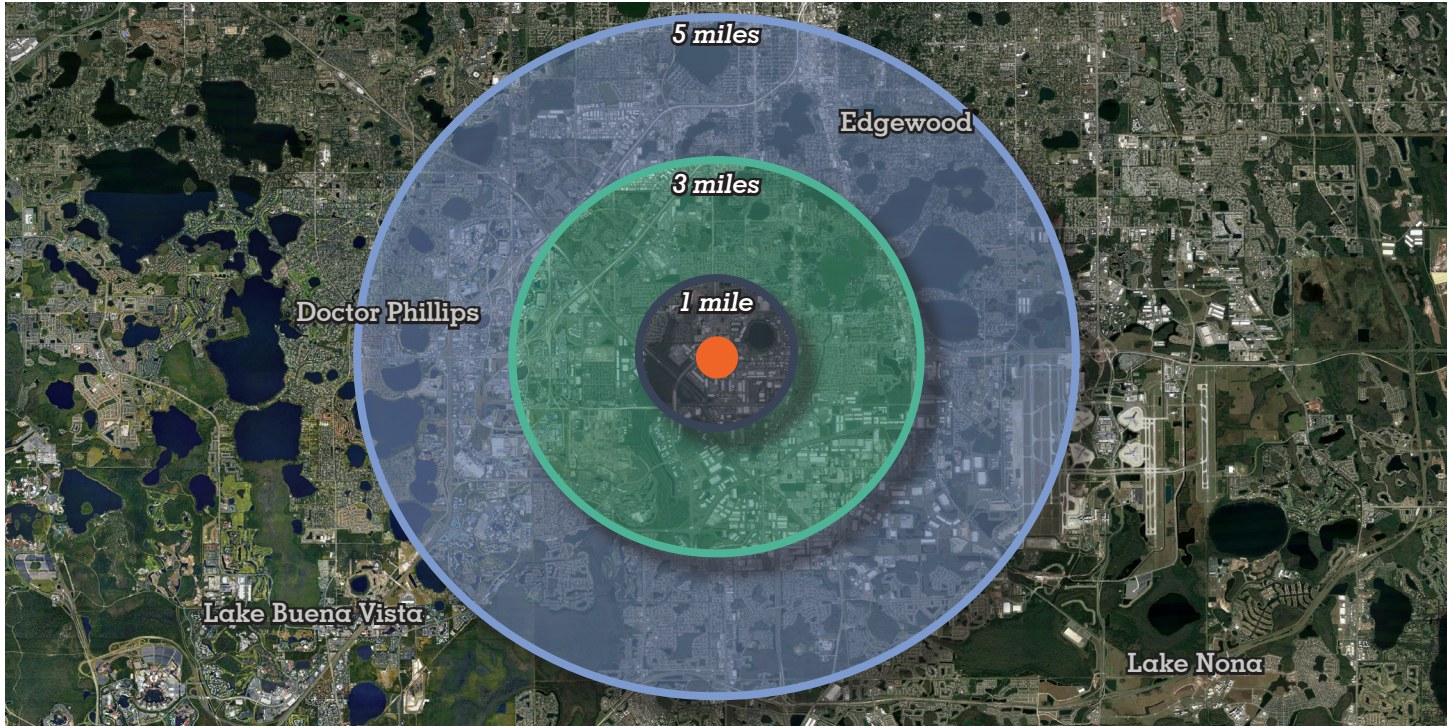


**For further information**

**Lisa Bailey, SIOR**  
Principal  
+1 407 440 6645  
lisa.bailey@avisonyoung.com

**Emily Zinaich**  
Senior Vice President  
+1 407 440 6641  
emily.zinaich@avisonyoung.com

avisonyoung.com



**1-3-5 Mile Demographics**

Population	1 mile	3 miles	5 miles
2024 Estimated population	2,789	83,724	211,279
2029 Estimated population	2,772	88,174	219,977
Projected annual growth 2024 to 2029	-0.12%	1.04%	0.81%
Households	1 mile	3 miles	5 miles
2024 Estimated households	930	30,074	78,316
2029 Estimated households	920	31,417	81,123
Projected household growth 2024 to 2029	-0.22%	0.88%	0.71%
Household income	1 mile	3 miles	5 miles
2024 Estimated average household income	\$70,390	\$72,097	\$88,544
2024 Estimated median household income	\$48,510	\$56,421	\$61,945
Business and employees	1 mile	3 miles	5 miles
2024 Total businesses	1,137	8,125	17,498
2024 Total employees	16,976	96,837	216,451
Employee / Residential Ratio (per 100 residents)	609	116	102

**5 Mile Highlights**



**Population**  
211,279



**Growth by 2029**  
0.71%



**Total employees**  
216,451



**Avg. HH income**  
\$88,544

Data provided by ESRI

**For further information**

**Lisa Bailey, SIOR**  
Principal  
+1 407 440 6645  
lisa.bailey@avisonyoung.com

**Emily Zinaich**  
Senior Vice President  
+1 407 440 6641  
emily.zinaich@avisonyoung.com

avisonyoung.com

**Building 7550 - Suite 100 - 8,215± sf**

*100% Office Space*

Commerce Point  
7550-7648 Southland Blvd  
Orlando, FL 32809



**Get more  
information**

**Lisa Bailey**  
Principal  
+1 407 440 6645

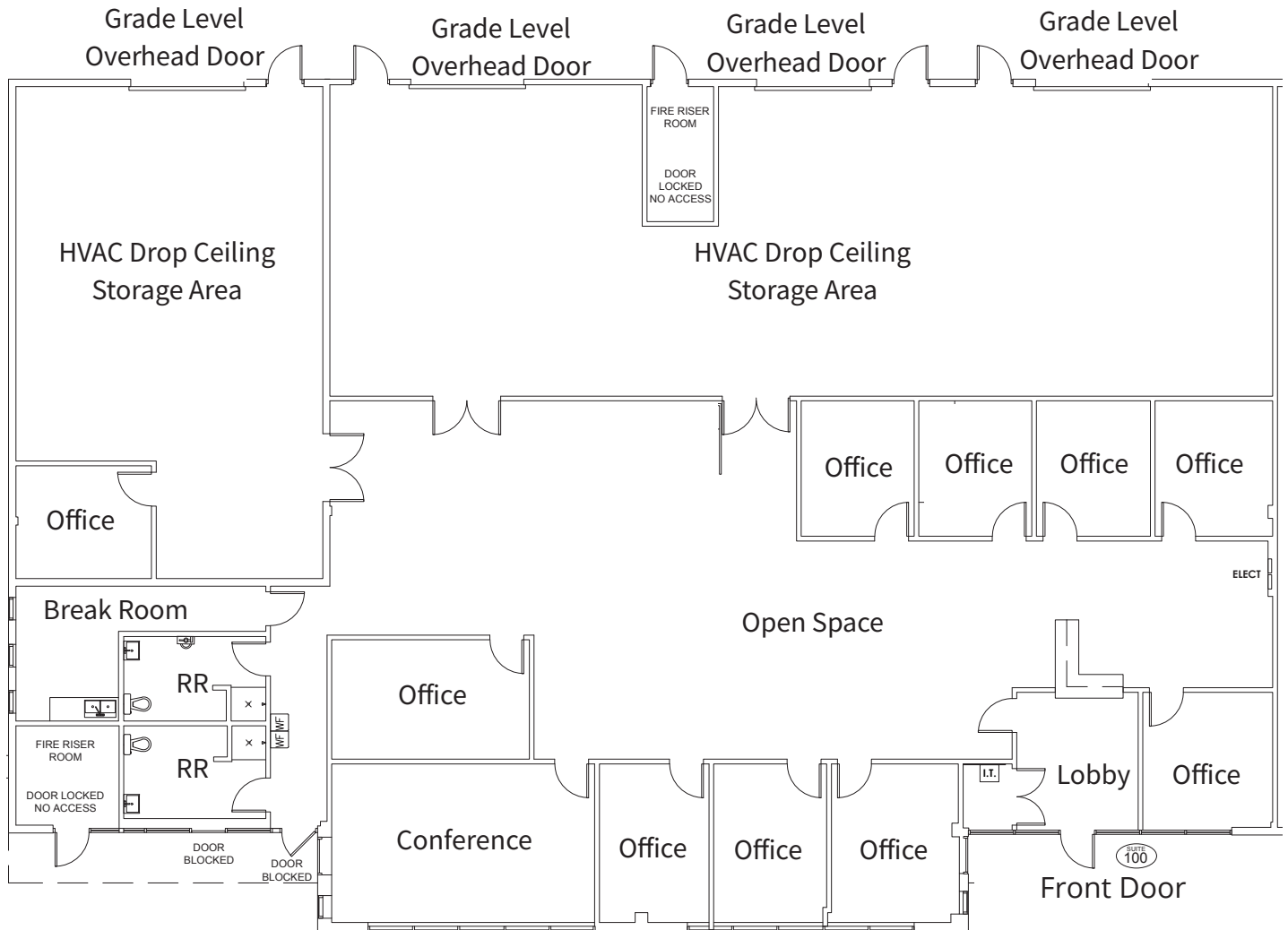
**Emily Zinaich**  
Senior Vice President  
+1 407 440 6641

[avisonyoung.com](http://avisonyoung.com)

**Building 7558 - Suite 100 - 7,811± sf**

*Office/Warehouse Space*

Commerce Point  
7550-7648 Southland Blvd  
Orlando, FL 32809



**Get more information**

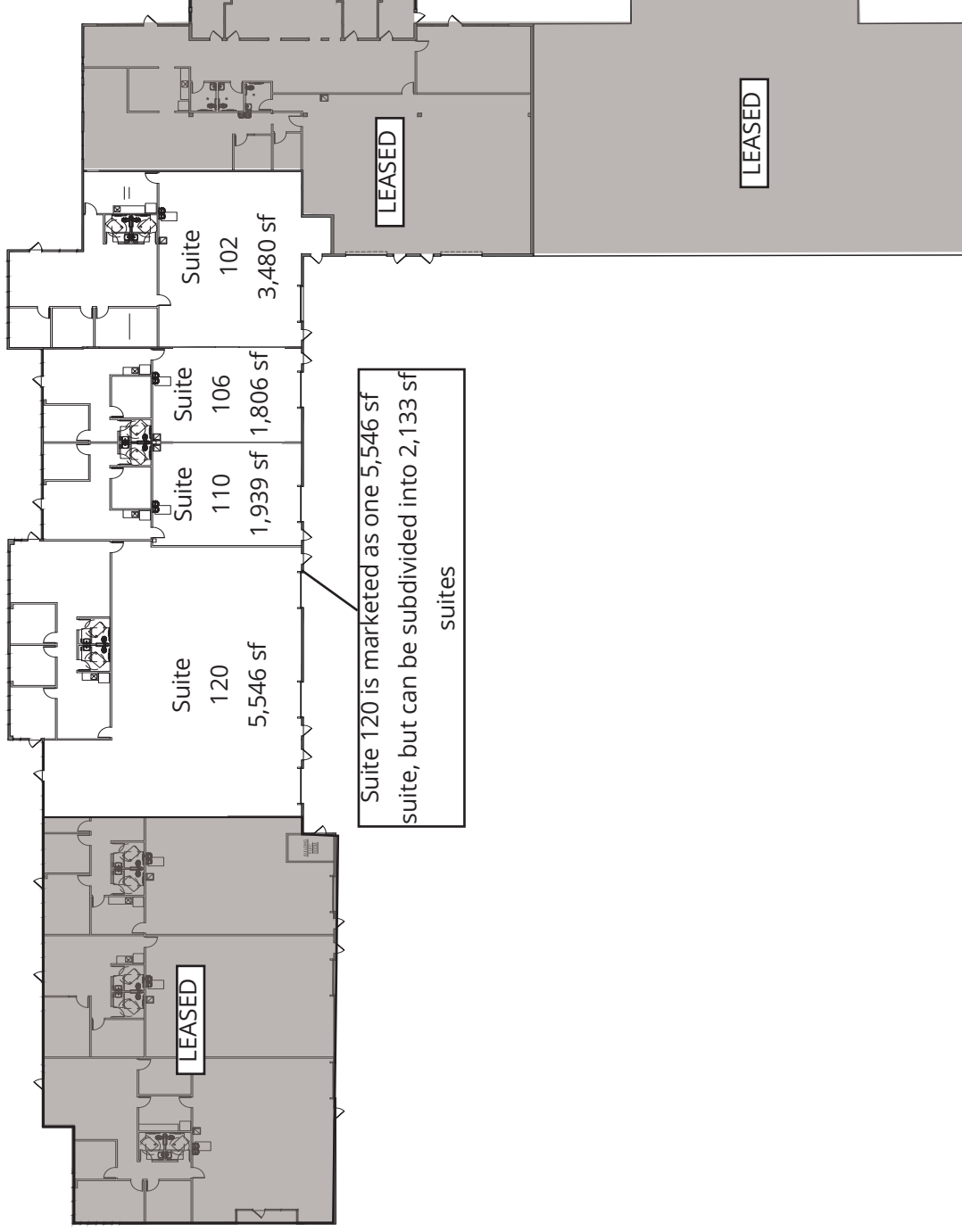
**Lisa Bailey**  
Principal  
+1 407 440 6645

**Emily Zinaich**  
Senior Vice President  
+1 407 440 6641

[avisonyoung.com](http://avisonyoung.com)

## Building 7558 - Suites 110-170 - Q1 2026 Delivery

Commerce Point  
7550-7648 Southland Blvd  
Orlando, FL 32809



**Get more  
information**

**Lisa Bailey**  
Principal  
+1 407 440 6645

**Emily Zinaich**  
Senior Vice President  
+1 407 440 6641

© 2023 Avison Young - Florida, LLC. All rights reserved. E. & O.E.: The information contained herein was obtained from sources which we deem reliable and, while thought to be correct, is not guaranteed by Avison Young.

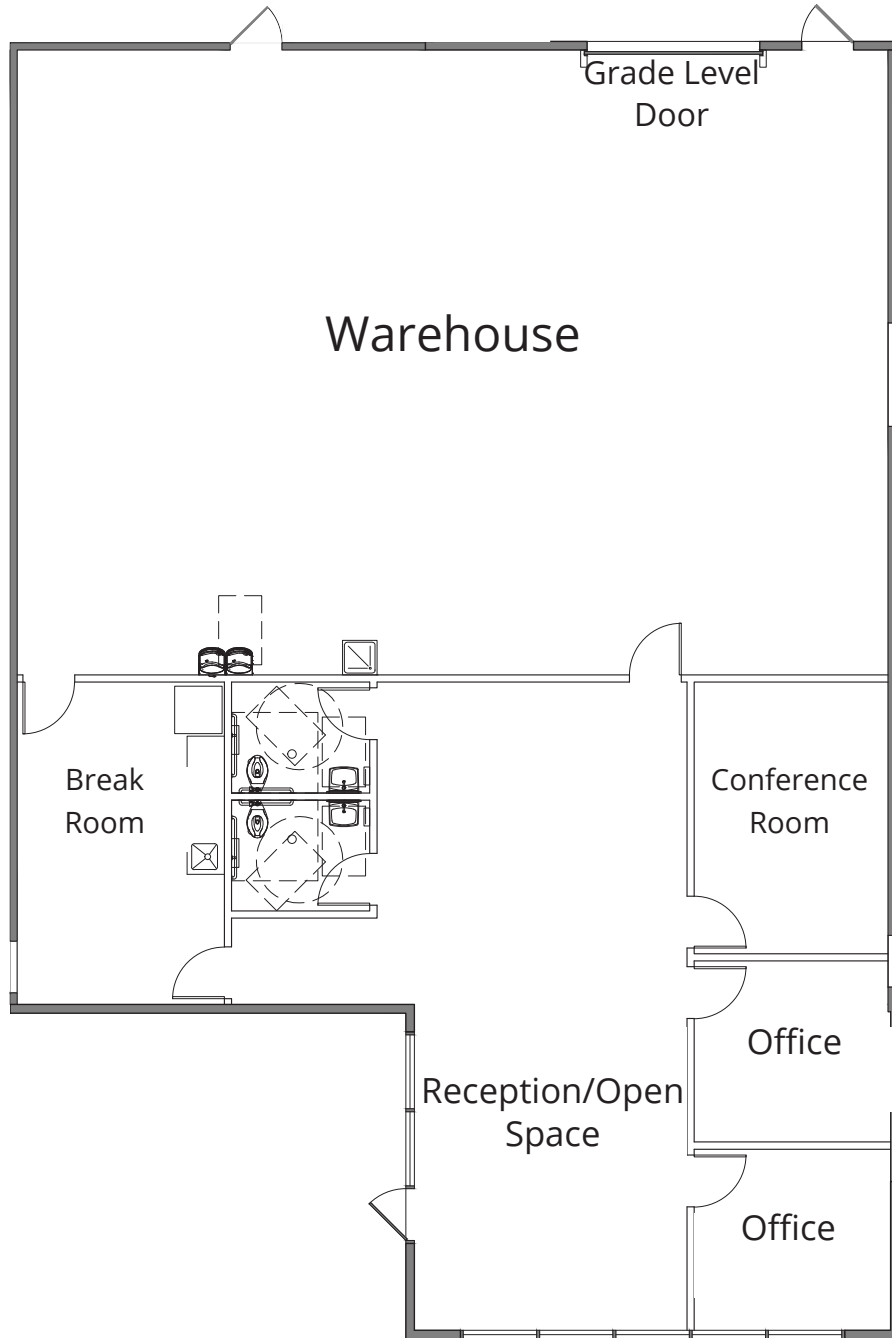
avisonyoung.com



**Building 7558 - Suite 102 - 3,480± sf**

*Office/Warehouse  
Available Q1 2026*

Commerce Point  
7550-7648 Southland Blvd  
Orlando, FL 32809



**Get more  
information**

**Lisa Bailey**  
Principal  
+1 407 440 6645

**Emily Zinaich**  
Senior Vice President  
+1 407 440 6641

[avisonyoung.com](http://avisonyoung.com)

**Building 7558 - Suite 106 - 1,806± sf**

*Office/Warehouse  
Available Q1 2026*

Commerce Point  
7550-7648 Southland Blvd  
Orlando, FL 32809



**Get more  
information**

**Lisa Bailey**  
Principal  
+1 407 440 6645

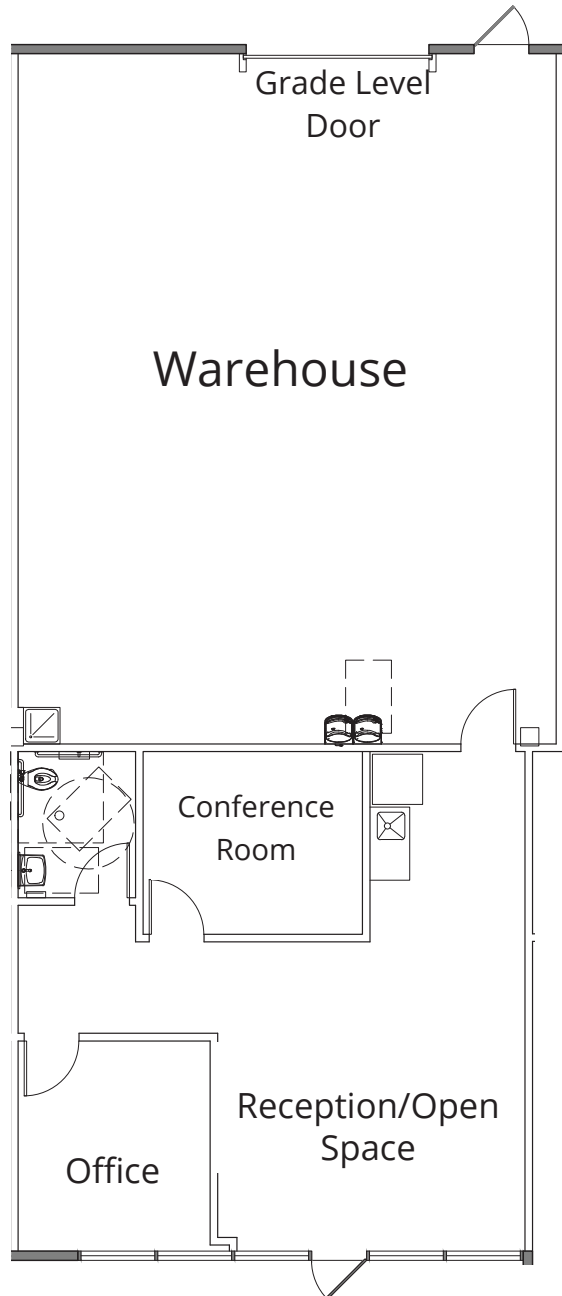
**Emily Zinaich**  
Senior Vice President  
+1 407 440 6641

[avisonyoung.com](http://avisonyoung.com)

**Building 7558 - Suite 110 - 1,938± sf**

*Office/Warehouse  
Available Q1 2026*

Commerce Point  
7550-7648 Southland Blvd  
Orlando, FL 32809



**Get more  
information**

**Lisa Bailey**  
Principal  
+1 407 440 6645

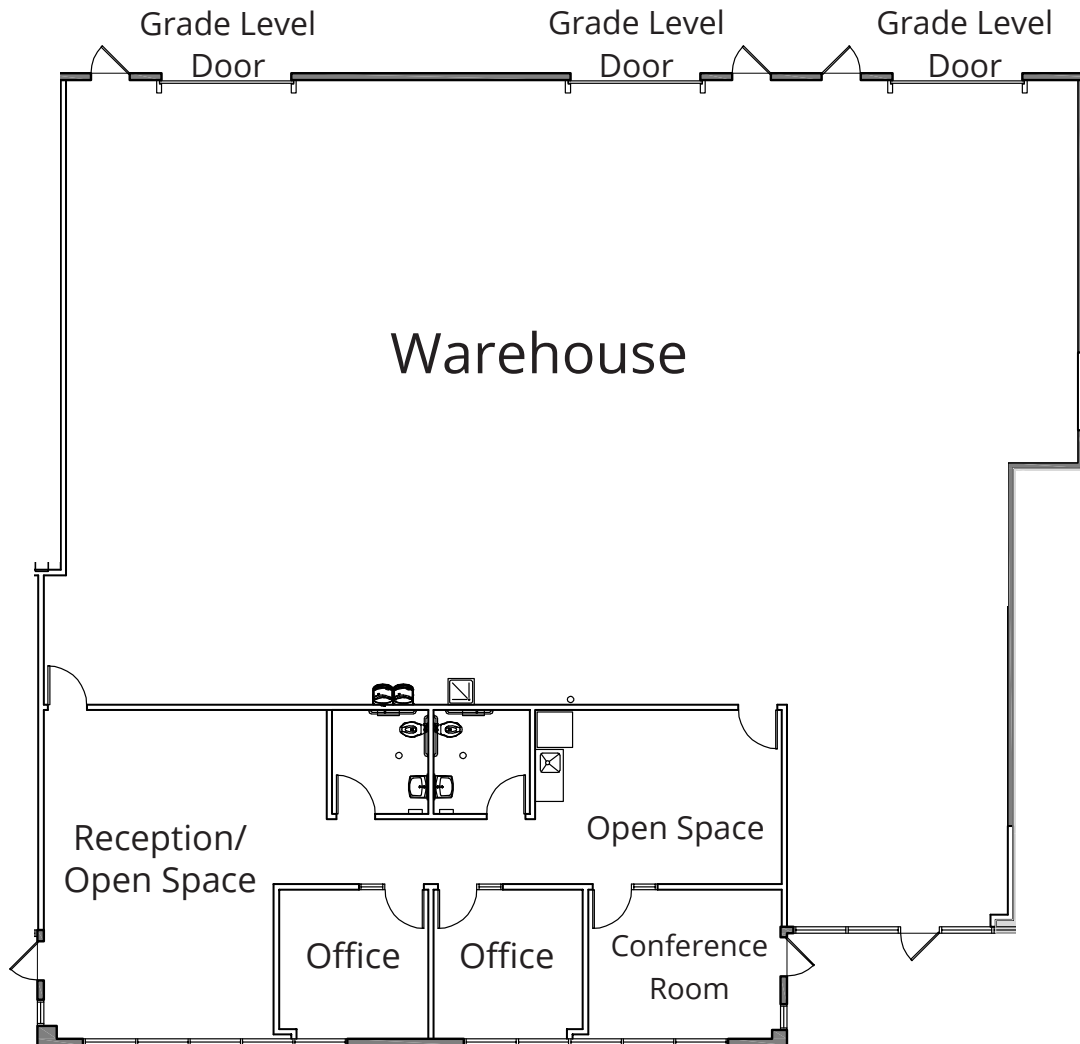
**Emily Zinaich**  
Senior Vice President  
+1 407 440 6641

[avisonyoung.com](http://avisonyoung.com)

**Building 7558 - Suite 120 - 5,546± sf**

*Office/Warehouse  
Available Q1 2026*

Commerce Point  
7550-7648 Southland Blvd  
Orlando, FL 32809



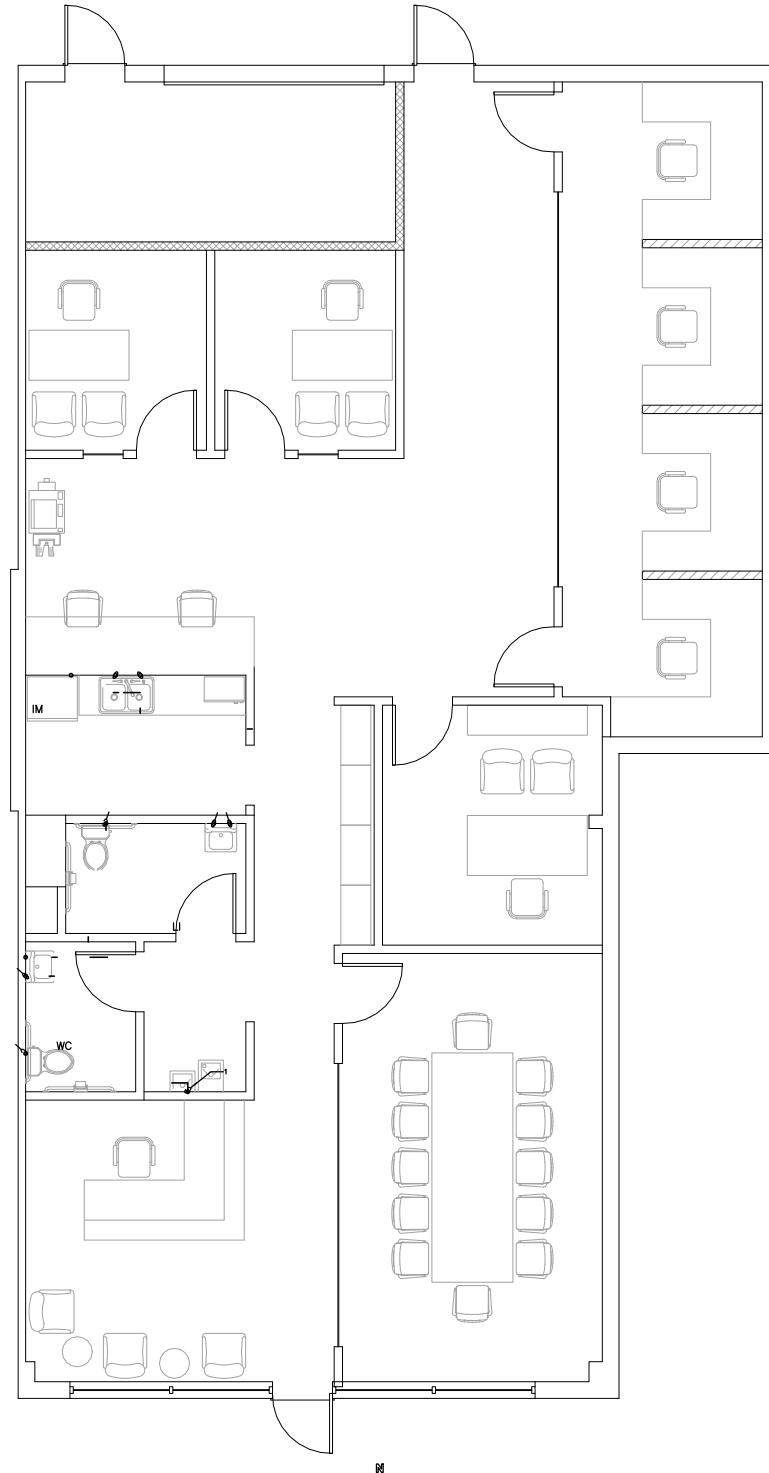
**Get more  
information**

**Lisa Bailey**  
Principal  
+1 407 440 6645

**Emily Zinaich**  
Senior Vice President  
+1 407 440 6641

[avisonyoung.com](http://avisonyoung.com)





**Get more  
information**

**Lisa Bailey**  
Principal  
+1 407 440 6645

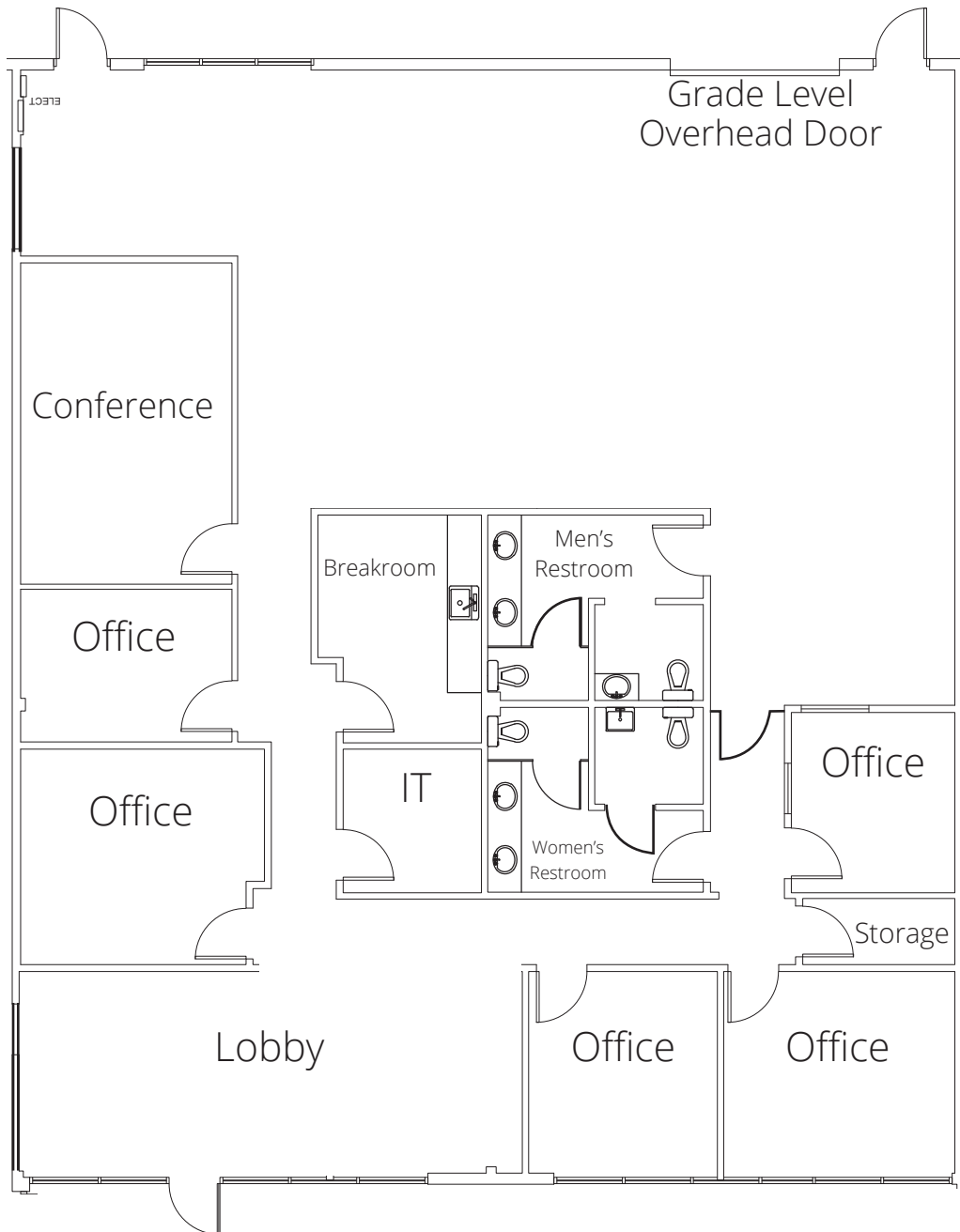
**Emily Zinaich**  
Senior Vice President  
+1 407 440 6641

[avisonyoung.com](http://avisonyoung.com)

**Building 7616 - Suite 110 - 3,752± sf**

Commerce Point  
7550-7648 Southland Blvd  
Orlando, FL 32809

Office/Warehouse Space  
Drop Ceiling  
100% HVAC



**Get more  
information**

**Lisa Bailey**  
Principal  
+1 407 440 6645

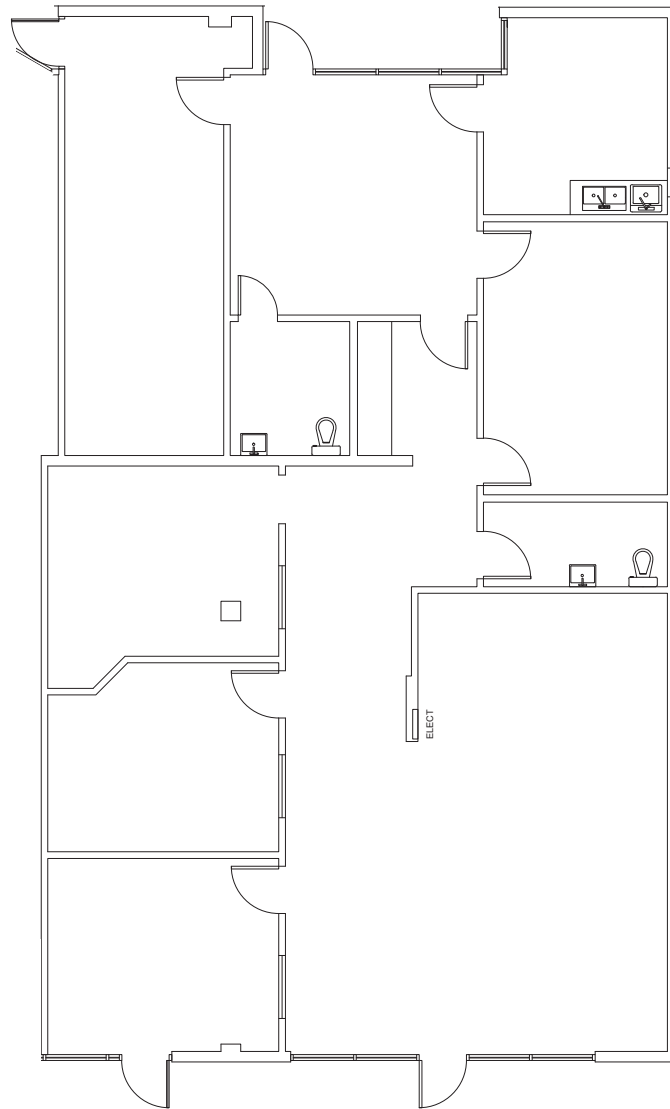
**Emily Zinaich**  
Senior Vice President  
+1 407 440 6641

[avisonyoung.com](http://avisonyoung.com)

**Building 7632 - Suite 105 - 2,933± sf**

*Office Space*  
*100% HVAC*

Commerce Point  
7550-7648 Southland Blvd  
Orlando, FL 32809



**Get more  
information**

**Lisa Bailey**  
Principal  
+1 407 440 6645

**Emily Zinaich**  
Senior Vice President  
+1 407 440 6641

[avisonyoung.com](http://avisonyoung.com)