

10108 Twenty Mile Rd | Parker, CO 80134



## Parker/Douglas

**Justin Gregory** | 303.390.5240 | [justin.gregory@srsre.com](mailto:justin.gregory@srsre.com)



# The Hub Lot 4

10108 Twenty Mile Rd | Parker, CO 80134



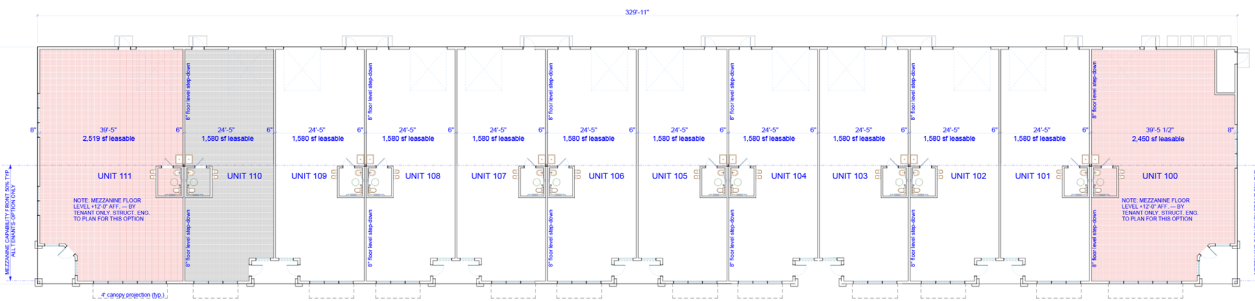
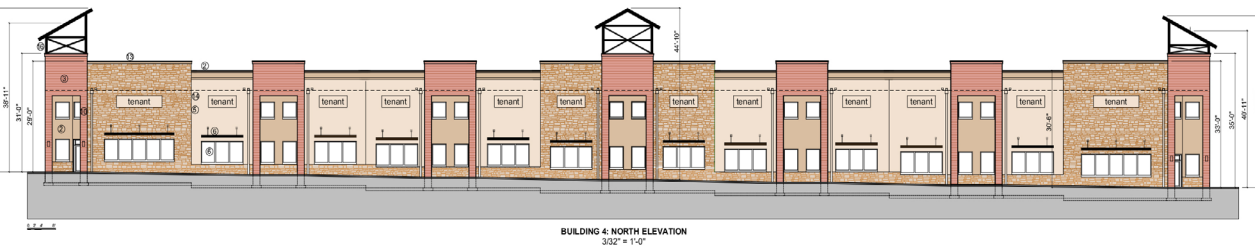




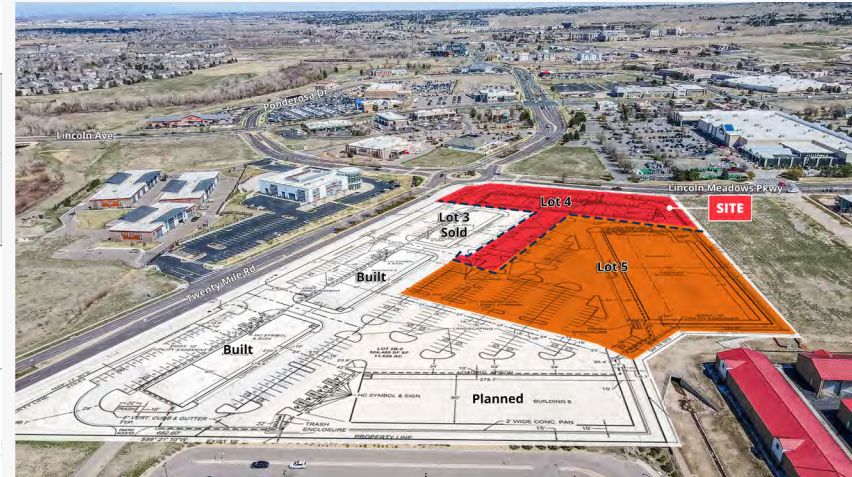


# The Hub Lot 4

10108 Twenty Mile Rd | Parker, CO 80134



**BUILDING 4**  
3/32" = 1'-0"



# The Hub Lot 4

10108 Twenty Mile Rd | Parker, CO 80134



## DEMOGRAPHIC HIGHLIGHTS

### Population

	1 Mile	3 Miles	5 Miles
2025 Estimated Population	7,590	78,842	141,346
2030 Projected Population	8,028	86,916	154,900
Projected Annual Growth 2025 to 2030	1.13%	1.97%	1.85%

### Daytime Population

2025 Daytime Population	12,734	69,485	139,928
Workers	9,307	32,396	73,784
Residents	3,427	37,089	66,144

### Income

2025 Est. Average Household Income			
2025 Est. Median Household Income			

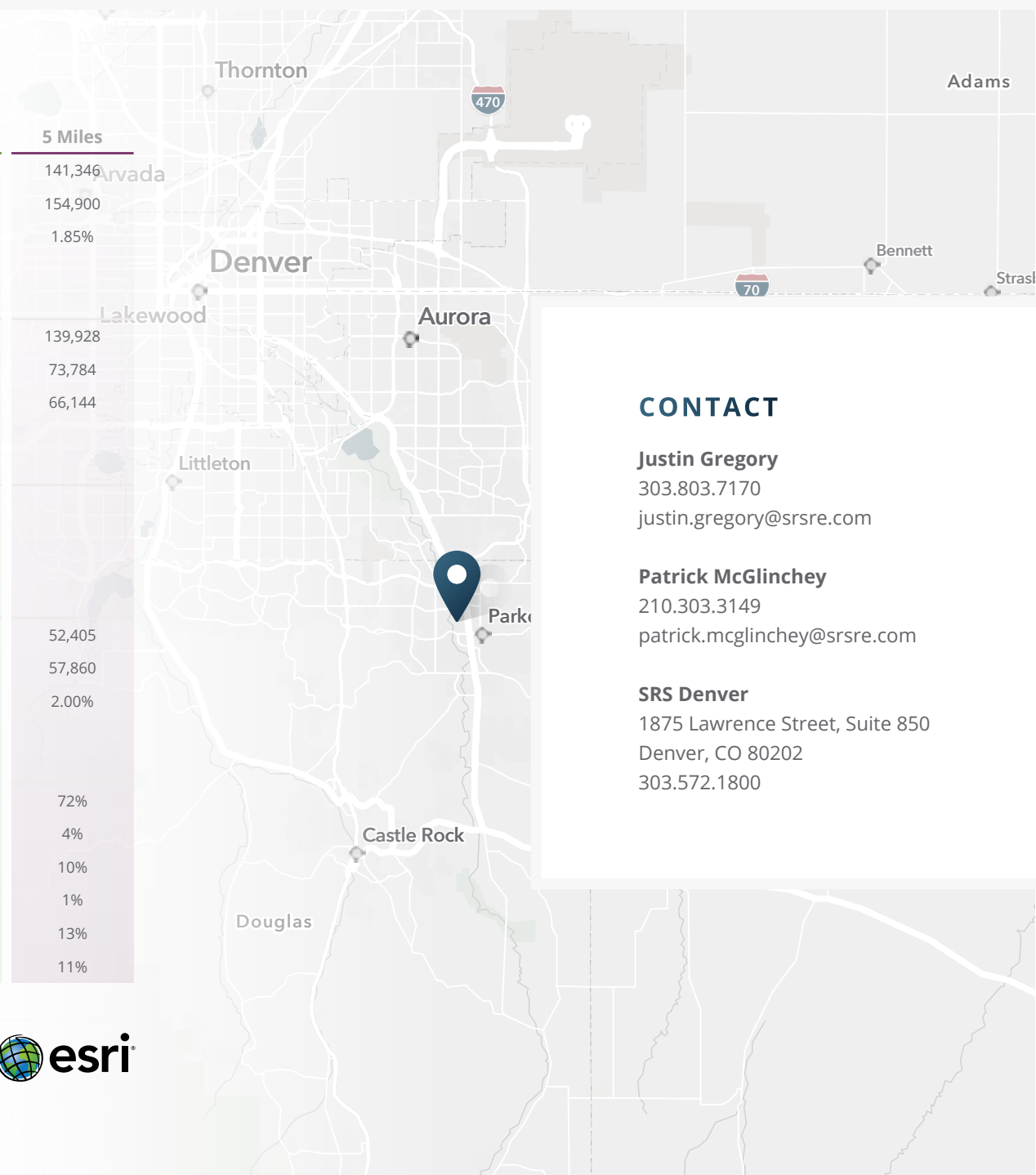
### Households & Growth

2025 Estimated Households	2,943	28,986	52,405
2030 Projected Households	3,149	32,253	57,860
Projected Annual Growth 2025 to 2030	1.36%	2.16%	2.00%

### Race & Ethnicity

2025 Est. White	74%	74%	72%
2025 Est. Black or African American	3%	2%	4%
2025 Est. Asian or Pacific Islander	8%	10%	10%
2025 Est. American Indian or Native Alaskan	1%	1%	1%
2025 Est. Other Races	15%	13%	13%
2025 Est. Hispanic	13%	11%	11%

> **Want more?** Contact us for a complete demographic, foot-traffic, and mobile data insights report.



## CONTACT

### Justin Gregory

303.803.7170

[justin.gregory@srsre.com](mailto:justin.gregory@srsre.com)

### Patrick McGlinchey

210.303.3149

[patrick.mcglinchey@srsre.com](mailto:patrick.mcglinchey@srsre.com)

### SRS Denver

1875 Lawrence Street, Suite 850

Denver, CO 80202

303.572.1800